

Seatbelt Sensors

(Non-Restraining*)



10310 Velcro Seatbelt Sensor



10320 Buckle Seatbelt Sensor

- Designed to alert staff before the patient gets up and reminds the patient to be seated. The seatbelt is an easy-to-release device that holds the patient safely in the chair. The alarm sounds as soon as the patient disengages the belt alerting the staff or caregiver.
- Durable heavy duty nylon lap belt sounds an alarm when velcro attachment is separated.
- Alerts staff and directs resident to stay seated for assistance.
- Belt is adjustable from 26" to 46".
- Velcro belt features a bright red pull-strap for easy locating and releasing.
- Metal grommets on ends of belt provide a customized fit and ensures a secure installation.
- Use on any chair: Geri-chairs, wheelchairs, side chairs.
- Works universally with most major manufacturer's alarms.

NOTE: These devices are not restraints! They are designed to be easily unfastened by most patients.

**if a patient is unable to remove a device without assistance, it is considered a restraint under OBRA guidelines.*

12" Seatbelt Extension



10330 12" Seatbelt Extension

Alarm Bag



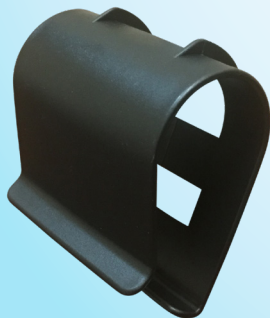
10410 Alarm Bag

Nurse Call Cord



10430-8 Nurse Call Cord - 8'

Advanced Alarm Bed Mount



10340 Advanced Alarm Bed Mount

Splitter (t-connect)



10420 Splitter

Nurse Call Connector Plug



10440 Nurse Call Connector Cable