

A full-page photograph serves as the background. It depicts a female nurse with dark hair, wearing teal scrubs, smiling as she assists an elderly male patient. The patient is lying in a hospital bed, wearing a blue hospital gown. A white mechanical lift device is positioned over the patient, and a blue and red sling is being used to support him. The nurse is holding the handles of the lift device. The overall scene conveys a sense of professional care and safety.

**FOCUS ON
STAFF SAFETY.**

Lift and Sling Products
Comprehensive Program for Safe Patient Handling

THE CASE FOR SAFE PATIENT HANDLING.

Every year,
40–50%
of nurses experience
back injuries¹

56%
of nurses leave the
profession early due to
the physical exertion
demanded of them²

Back injuries cost
the healthcare industry
\$20B
each year³



AN EXPERIENCED PARTNER WITH AN EXCITING OFFERING.

Medline exists to keep healthcare healthy. We lead the market in more than a dozen major medical product categories, and have been in the patient lift business for more than ten years. We're proud to include in our medical solutions a comprehensive Safe Patient Handling program.

With the purchase of a patient lift, Medline's Safe Patient Handling program is available at no cost to your facility. Our program includes not only high-quality equipment and quick installation, but also optional clinical support to assist with in-servicing, and a complete, easy-to-implement set of training tools that features:

- » Safe Patient Handling National Standards Book
- » Safe Patient Handling Lifting Competencies
- » Safe Patient Handling Picture Guides
- » Safe Patient Handling Movement Instructions
- » Safe Patient Handling Training DVD

Contact your Medline representative for more info today.



Picture Guides



Lifting Competencies



Movement Instructions

OVERHEAD LIFT



This system makes it simple to own and install overhead lifts in almost any facility. Thanks to easy-install E-tracks that run along the walls, all we need is the length, width and height of a room to get you a quote and get your facility's safe patient handling equipment up and running.

- » Single-motor has a weight capacity of up to 600 lbs., or two motors can be combined with reinforced track to handle up to 1000 lbs.
- » Auto-locking cradle design guarantees that slings stay secured to the cradle during lifting
- » Industry-leading 3-year warranty on the lift motor
- » Track lengths may be trimmed to any room size that is 7 meters or less

COMPONENTS AND ACCESSORIES FOR OVERHEAD LIFT



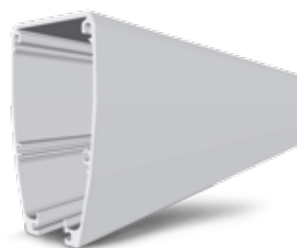
ERGLUNA



ERGHANDCTRL



ERGPSREADER



ERGETRK43

Motor Components

Item No.	Description	Pkg
ERGLUNA	600-lb. capacity overhead lift motor	1 ea
ERGHANDCTRL	Hand control pendant for overhead lift	1 ea
ERGPSREADER	Spreader bar for overhead lift	1 ea
ERGCHARGER	Charging station for overhead lift	1 ea

E-Track Rail Components

Item No.	Description	Pkg
ERGETRK43	4.3M length E-track for overhead lift	1 ea
ERGETRK55	5.5M length E-track for overhead lift	1 ea
ERGETRK7	7M length E-track for overhead lift	1 ea
ERGETRKENCV	End cover for E-track	2 ea
ERGETRKCVPL	Cover plate for E-track	1 ea
ERGETRKENST	End cover for E-track	1 ea

Traverse Rail Components

Item No.	Description	Pkg
ERGVTRK43	4.3M length traverse rail for overhead lift	1 ea
ERGVTRK55	5.5M length traverse rail for overhead lift	1 ea
ERGVTRK7	7M length traverse rail for overhead lift	1 ea
ERGVTRK43R	Reinforced 4.3M length traverse rail for overhead lift	1 ea
ERGVTRK55R	Reinforced 5.5M length traverse rail for overhead lift	1 ea
ERGVTRK7R	Reinforced 7M length traverse rail for overhead lift	1 ea
ERGVTRKENST	End stop for traverse rail	1 ea

Cart Accessories

Item No.	Description	Pkg
ERG CARTBY	Bayonet cart for motor	1 ea
ERG CARTTN	Turning bracket cart for motor	1 ea
ERG CARTXYFX	Fixed XY cart	1 ea
ERG CARTXYAJ	Adjustable XY cart	1 ea
ERG CARTXYFXD	Drop-down fixed XY cart	1 ea
ERG CARTXYAJD	Drop-down adjustable XY cart	1 ea

MOBILE LIFTS



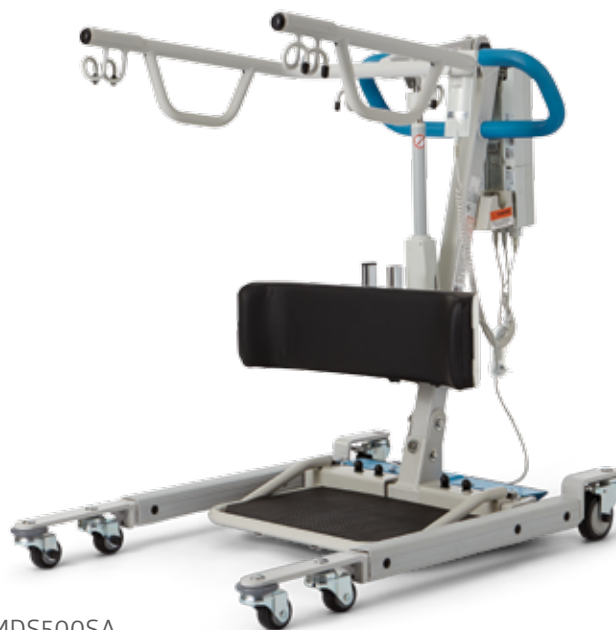
MDS450EL

Patient lift devices are used for patients who are non-weight bearing, partially weight bearing, disabled physically or developmentally, or who have other physical limitations. One mobile lift is recommended for every eight patients that need one. Our powered base lifts feature:

- » Low-profile base legs that easily move under beds and other furniture
- » Easy-to-operate controls
- » Six-point cradles that provide flexibility for maximum comfort and safety
- » Removable battery pack for convenient off-board charging
- » 3-year warranty on all mechanical and electrical parts

Item No.	Description	Pkg
MDS400EL	400-lb. capacity lift w/manual base	1 ea
MDS450EL	450-lb. capacity lift w/powered base	1 ea
MDS600EL	600-lb. capacity lift w/manual base	1 ea
MDS700EL	700-lb. capacity lift w/powered base	1 ea

STAND ASSIST LIFTS



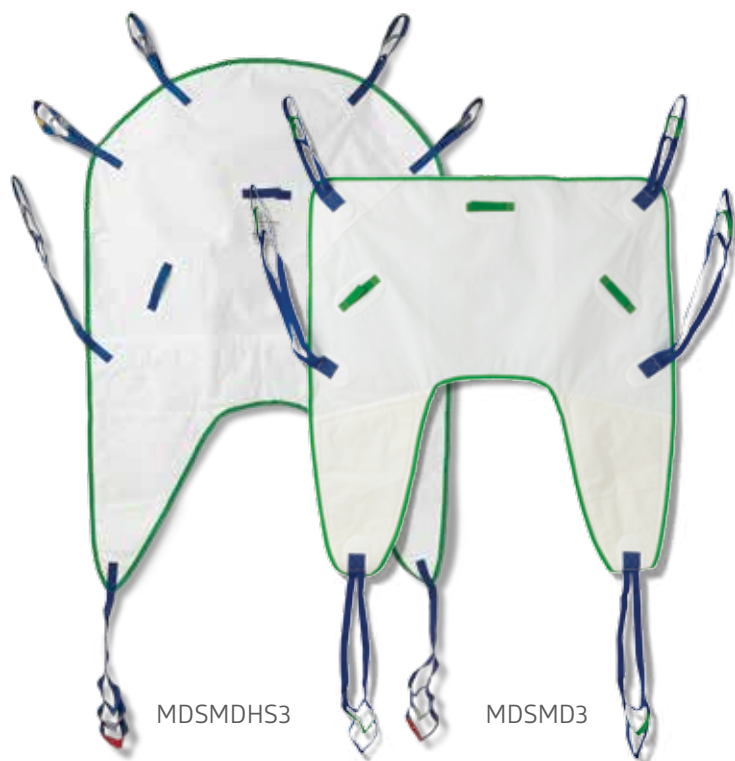
MDS500SA

Stand assist lifts are used to lift patients who are partially dependent, have some weight-bearing capacity, are cooperative, can sit up on the edge of the bed with or without assistance, and are able to bend their hips, knees, and ankles. One stand assist lift is recommended for every eight patients that need one. Our stand assist lifts feature:

- » Easy-to-operate controls
- » Removable foot platform for gait training
- » Removable battery pack for convenient off-board charging
- » 3-year warranty on all mechanical and electrical parts

Item No.	Description	Pkg
MDS400SA	400-lb. capacity stand assist w/manual base	1 ea
MDS500SA	500-lb. capacity stand assist w/powered base	1 ea
MDS600SA	600-lb. capacity lift with manual base	1 ea

DISPOSABLE U-SHAPE SLINGS



Designed for comfort and ease of use, the U-shaped sling is a secure, easy-to-fit, general-purpose sling—with the advantage of being easy to put under and remove from patients. Disposable slings are intended for single-patient use, helping to reduce cross-contamination. Plus, there's no need to launder—simply dispose before the sling shows signs of wear.

Item No.	Description	Pkg
MDSMD2	Medium size universal sling w/out head support, 250-lb. capacity	10/cs
MDSMD3	Large size universal sling w/out head support, 400-lb. capacity	10/cs
MDSMDHS1	Small size universal sling w/head support, recommended for 150 lbs. or less	10/cs
MDSMDHS2	Medium size universal sling w/head support, recommended for 250 lbs. or less	10/cs
MDSMDHS3	Large size universal sling w/head support, recommended for 450 lbs. or less	10/cs
MDSMDHS4	Extra-large size universal sling w/head support, 700-lb. capacity	10/cs

DISPOSABLE STAND ASSIST SLINGS



Created for use with Medline's stand assist lifts, these slings provide the extra support the patient needs to stand. A valuable feature of the Medline stand assist sling is the extra padding in the lumbar and under-arm areas for improved patient comfort.

Item No.	Description	Pkg
MDSMDSA662	Medium size disposable stand assist sling, 500-lb. capacity	10/cs
MDSMDSA663	Large size disposable stand assist sling, 500-lb. capacity	10/cs



ADVANCING THE HEALTH OF HEALTHCARE.™

In a complex healthcare world, Medline's mission is to help our customers achieve both clinical and financial success. We do that through a personalized approach to listen and better understand our customers' needs in an environment that tirelessly demands lower costs and better outcomes.

Because of our capabilities and engagement with other clinical and industry thought leaders, we deliver the most robust product portfolio and patient-care solutions to help healthcare providers perform at their very best. This is who we are. This is why customers choose us as their trusted business partner.







Medline Industries, Inc. One Medline Place, Mundelein, IL 60060

Medline United States
1-800-MEDLINE (633-5463)
medline.com | info@medline.com

Medline Canada
1-800-396-6996
medline.ca | canada@medline.com

Medline México
01-800-831-0898
medlinemexico.com | mexico@medline.com

FOLLOW US    

¹Hignett, S. (1996). Work-related back pain in nurses. *Journal of Advanced Nursing*, 23(6). Available at: <http://www.ncbi.nlm.nih.gov/pubmed/8796474>. Accessed June 17, 2015.
²Joint Commission on Accreditation of Healthcare Organizations (2002). *Healthcare at the crossroads: Strategies for addressing the evolving nursing crisis*. p 10. Oakbrook Terrace, IL. Available at: http://www.jointcommission.org/assets/1/18/health_care_at_the_crossroads.pdf. Accessed June 17, 2015. ³Safe Patient Handling—Preventing Musculoskeletal Disorders in Nursing Homes. 2012. OSHA(3108). Available at: <https://www.osha.gov/Publications/OSHA3708.pdf>. Accessed June 17, 2015.
Some products may not be available for sale in Mexico or Canada. We reserve the right to correct any errors that may occur within this brochure.
© 2015 Medline Industries, Inc. All rights reserved. Medline is a registered trademark of Medline Industries, Inc. MKT1549991 / LIT668 / 2.5M / TKZ / 10