



Luna

Lift Motor

- Custom attachment to the ORBIT® Patient Transfer Lift
- Hand control and charger included
- Spreader bars also available



EZ-ACCESS®

Distributed by EZ-ACCESS
1-800-451-1903 | www.ezaccess.com

All protection class tests are carried out by TÜV.



Scan for Luna video, user manual, and other product documents.



See the Ergolet user and technical manuals for detailed specifications. All figures and measurements are for guidance only and may differ in actual situations. Ergolet reserves the right to changes without notice. Product photos may include accessories.

EZ-ACCESS® is a distributor of some Ergolet® products and makes no claims or promises about the quality or reliability of the distributed products, nor the accuracy of the content listed.

Motor

The Luna's unique spherical shape with side carry handles is a true example of innovative Danish design.



Features

- Unique quick release mechanism for attachment to the EZ-ACCESS® ORBIT® Patient Transfer Lift. A simple twist and turn movement detaches the unit from the lift in a matter of seconds, without tools.
- IPx4 rated for wet environments, allowing use free of the risk of failure if the unit is inadvertently splashed with water.
- LED indicator lights indicate battery condition.
- Ergonomic hand control with charging function is included.
- Use with Ergolet's patented spreader bars with sling hook attachment.

Technical Information

Weight Capacity 440 lbs.

Dimensions (H x W) 5.1" x 12.6"

Weight 14.7 lbs.

Strap Length 86.6"

Lifting Range 76.7"

Covering High impact, molded ABS

Chassis Aluminum

Water Resistance Rated IPx4

Battery 36 V Lead Acid

Charging 100 - 240 V, 0.5 amp



Hand Control & Charger

The Luna hand control with charging function is optimized for convenience, ease of use, and safety, allowing the caregiver to focus on the needs and comfort of the patient.

Screw lock connector provides secure attachment to the motor



Permanent and stable charging



Features

- Emergency stop and lowering functionality.
- Approximately 80 lifts per charge with normal lift from bed and transfer.
- Screw lock connector provides secure and reliable attachment of hand control to motor and is water resistant against splashing.
- Hand control features an ergonomic design and bottom cable exit.
- Charging is done through the hand control and the unit will not overcharge.
- Charger features an LED indicator for charging status.
- The charger, which plugs into a power outlet, can be mounted on a nearby wall to provide a convenient and stable charging station.

Technical Information

Water Resistance	Rated IPx4
Cable Exit	Bottom
Cable Length	52"
Output	24 V (2 channel)

Spreader Bars

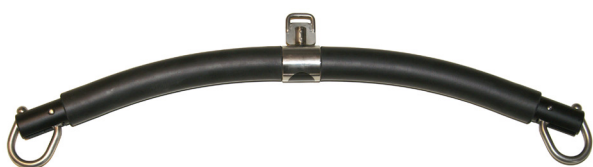
Spreader bars designed exclusively for use with the Luna Motor. Available in 2-point and 4-point models and feature the Ergolet patented sling hook system.

What it does

- Accommodates standard and bariatric lifting conditions.
- The 2-point spreader bar is best suited for a standard transfer where the client is of a normal stature.
- The 4-point spreader bar is used primarily for the transfer of bariatric clients. When combined with the correct sling size and model, the 4-point provides the proper support and comfort.

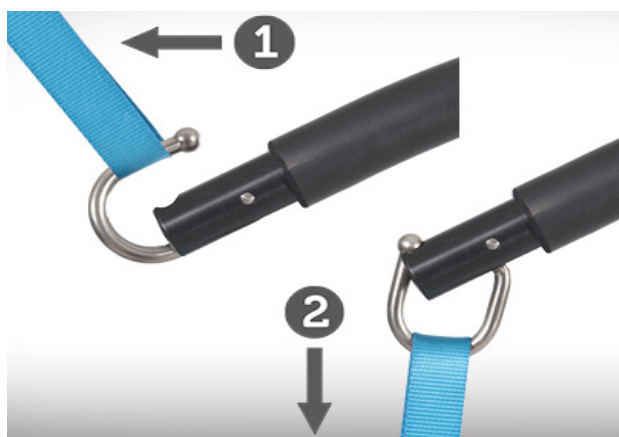
Features

- Equipped with Ergolet's patented sling hook system. This unique design ensures that the weight of the client will always act to keep the hooks closed and in a locked position. This failure-proof system prevents accidental loop detachment if the caregiver inadvertently forgets to lock the sling.
- Quick mount and release strap attachment allows the spreader bars to be easily interchanged.



Sling attachment on Ergolet hook system:

1. Pull upwards to unlock sling hook.
2. A minimum of downward pressure locks the hook.



Technical Information

2-point	Weight Capacity	440 lbs.
	Width	18.9"
	Height w/hook	6"
	Diameter	1.5"
	Weight	2.85 lbs.

4-point	Weight Capacity	440 lbs.
	Width	22"
	Height w/hook	11.6"
	Diameter	1.5"
	Weight	7 lbs.