



Rodeo Upgrades

Q2 2014

● ● ● **New Rodeo**



Convaid is excited to announce new standard features and accessory options on the **Rodeo** Tilt-in-Space Wheelchair.

*All new orders received as of **June 19 2014** will have all standard upgrades.*

● ● ● New Rodeo Upgrades

New Standard Features

- Lateral Support Sleeve
- Closure Strap
- Foam Handle
- Single Bar Brake System
- Upholstery Side Guard Increased by 1”
- Seat Depth Growth Adjustment
- Added Zippers in Seat Upholstery
- Seat Belt Adjustment

New Optional Accessories

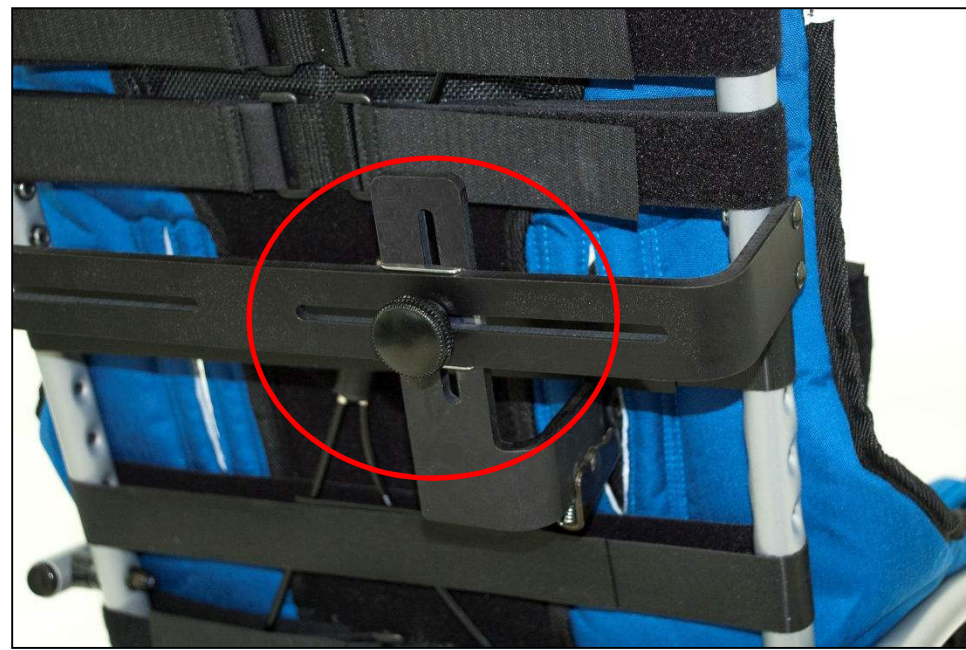
- Caster Locks
- Rear Anti-Tip Tubes

● ● ● **Lateral Support Sleeve**
Standard Feature

Old Style



New Upgrade



● ● ● Lateral Support Sleeve

The new **Lateral Support Sleeves** have been improved and it is now easier to adjust the lateral support width and height.

Firm Lateral Trunk Support – Contoured Instructions

To Adjust Laterals

1. Release the double sided Velcro support straps on the back of the chair to allow for vertical height adjustment of the lateral trunk support.
2. Loosen the knobs on the lateral mounting bracket to adjust the lateral supports vertically and horizontally.
3. Reposition the laterals to the desired location. If the laterals supports need to be open wider to accommodate the user's chest width, a new opening must be created in upholstery. Remove the back upholstery from the frame and use a razor blade to create a new slit.



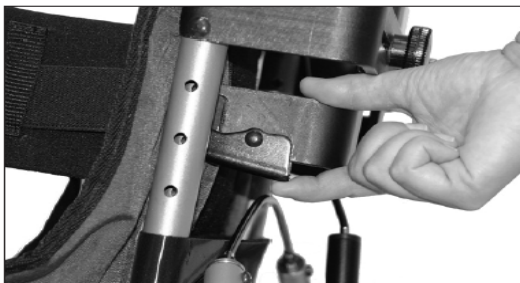


Firm Lateral Trunk Support – Contoured Instructions

Fold or Swing-Away Lateral Support

This firm folding lateral support is great for those with decreased postural control requiring additional support to maintain an upright seated position. Includes Swing-Away Adjustable Mounting Hardware required for installation.

1. To fold the chair or swing-out the lateral trunk supports, squeeze the latch located at the bottom of Lateral Support Bar, and fold the pad inward or outward.
2. Make sure the lateral trunk supports are folded in when you fold the chair.



● ● ●

Closure Strap

Standard Feature

Before: The strap wrapped around the one piece push handle to buckle.

After: The male end of the buckle is located on the back tube and buckles directly into the female side located on the base.

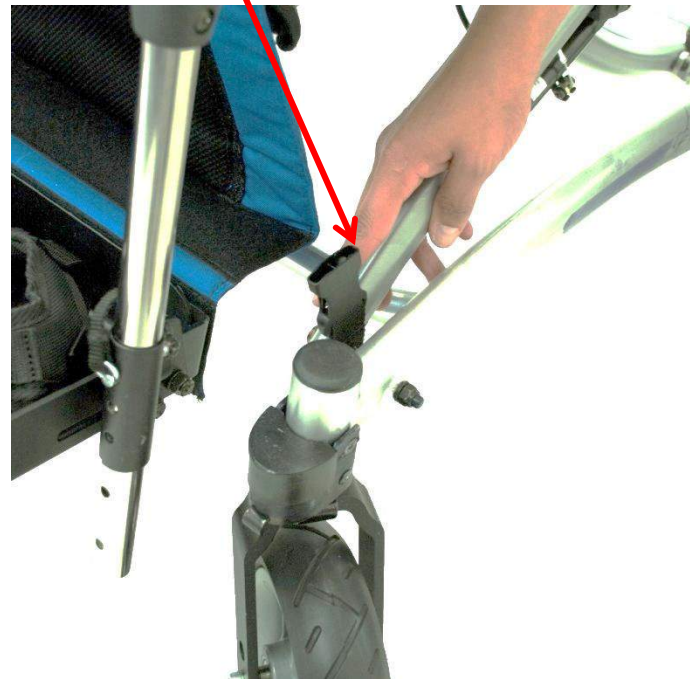


● ● ● New Closure Strap

Upper Closure Strap Location
(open)



Lower Closure Strap Location
(open)



● ● ● Closure Strap – Instructions

Folding Chair and using closure strap

1. Apply wheel locks by pushing the wheel lock bar downwards **Fig. 1**
2. Position chair in full upright position (not tilted or reclined). **Fig. 2**
3. Push in grey detent buttons on legrest extensions, swing them upward until parallel with the ground. **Fig. 3**
4. Unlock the safety lock. **Fig. 4**
5. Place foot on frames lower support tube, push the handle downwards to close. **Fig.5**
6. Secure closure strap. **Fig. 6 – 9**



Fig. 1



Fig. 2



Fig. 3

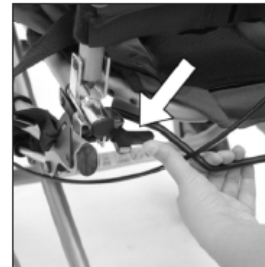


Fig. 4



Fig. 5



Fig. 6



Fig. 7



Fig. 8



Fig. 9

- ● ● **Closure Strap**

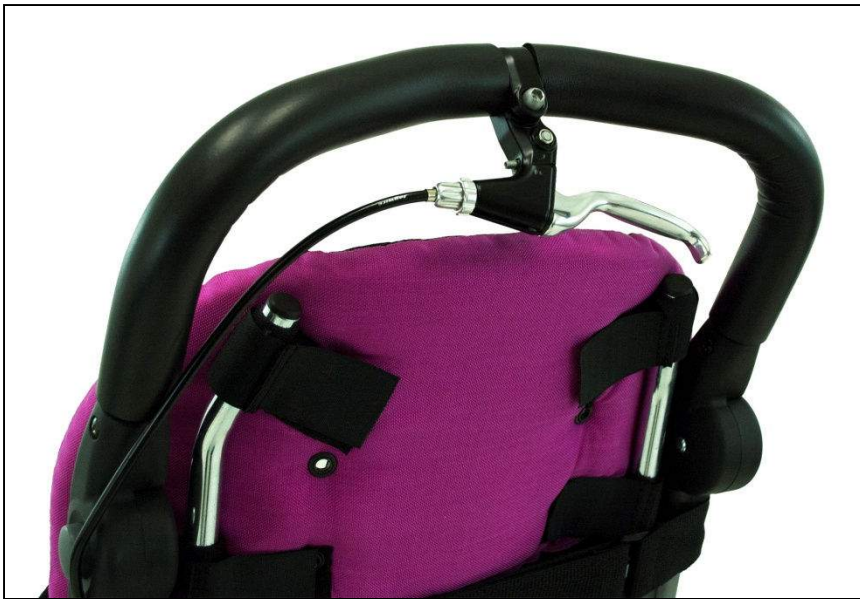
The **Closure Straps** keep the chair securely closed so that it can be picked up when folded.



Foam Handle

Standard Feature

Old Style



New Upgrade



● ● ● Foam Handle

The new **foam** on the one piece push handle has a better grip, and is more durable.

● ● ● **New Single Bar Brake System**
Standard Feature

Old Style



New Upgrade





New Single Bar Brake System

The new **Single Bar Brake** system is easier to operate and will activate both brakes at the same time.

It reduces the weight of the chair with 0.68 kg (1.5 lbs).

● ● ● New Single Bar Brake Systems Instructions

1. To lock the wheels push the wheel lock bar **downwards**. **Fig. 1**



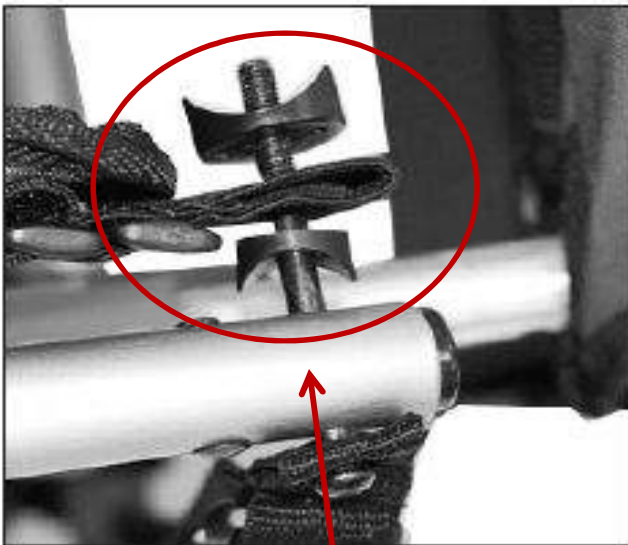
2. To disengage the wheel lock pull the wheel lock bar **upwards** with your toe. **Fig. 2**



WARNING: Never use excessive force. This could damage the quick release plunger pins and the wheels could fall off and cause injury.

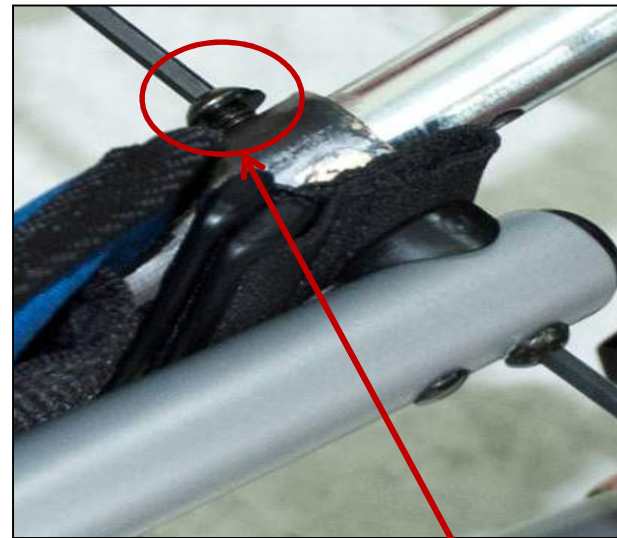
● ● ● **New Seat Depth Growth**
Standard Feature

Old Style



Multiple washers to adjust seat depth growth

New Upgrade



One screw to adjust seat depth growth.



New Seat Depth Growth Standard Feature

The Rodeo provides years of comfortable use. As the user grows, you can adjust the dimensions on the Rodeo by removing the bolt on the seat – that will adjust the seat depth growth. There's no need to purchase seat extensions to accommodate growth.

New Seat Depth Growth

● ● ●
Instructions



1. Push the gray detent buttons on the legrest extensions, swing them upward until parallel with the ground.



2. Peel off seat upholstery from the mesh seat support.



3. Remove bolt with a 5/32" allen wrench.



4. Extend the footplate tube by matching it with the holes on the seat base.



5. Tighten back the bolt and do the same thing on the other side.

● ● ● Side Guard
Standard Feature

Old Style



New Upgrade





Side Guard

Standard Feature

1” of material width was added to the back side guard of the upholstery to provide sufficient padding to cover the side curved tubes.



Added Upholstery Zippers

Standard Feature

Added
Zippers on
seat bottom
(both sides)



● ● ● Added Upholstery Zippers

The new added zippers on the seat bottom will allow the user to insert padding for additional comfort and support.

- ● ●

Seat Belt Adjustments

Standard Feature

Old Style



New Upgrade





Seat Belt Adjustments

Standard Feature

The new Rodeo seat belt adjustment is now easier to adjust and use.

● ● ● Seat Belt Adjustments

Instructions

To adjust seat belt:

1. Rotate Plastic adjuster up to release lock.



Caster Lock

● ● ●
New Accessory Option

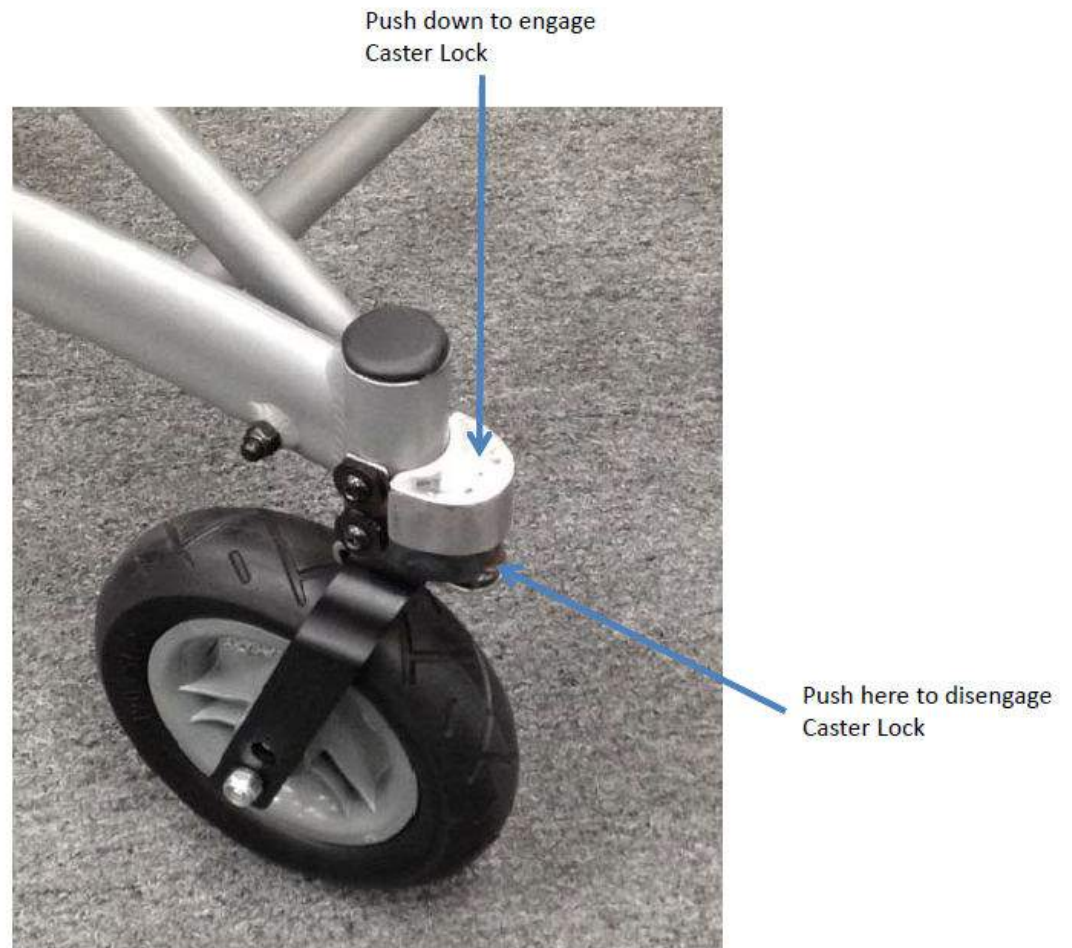
Caster Locks are now an option on the Rodeo. They are designed to lock the swivel wheels in a forward facing position.



Caster Lock

Instructions

1. To engage caster lock, push caster lock **down**.
2. Push bottom portion of caster lock to disengage.

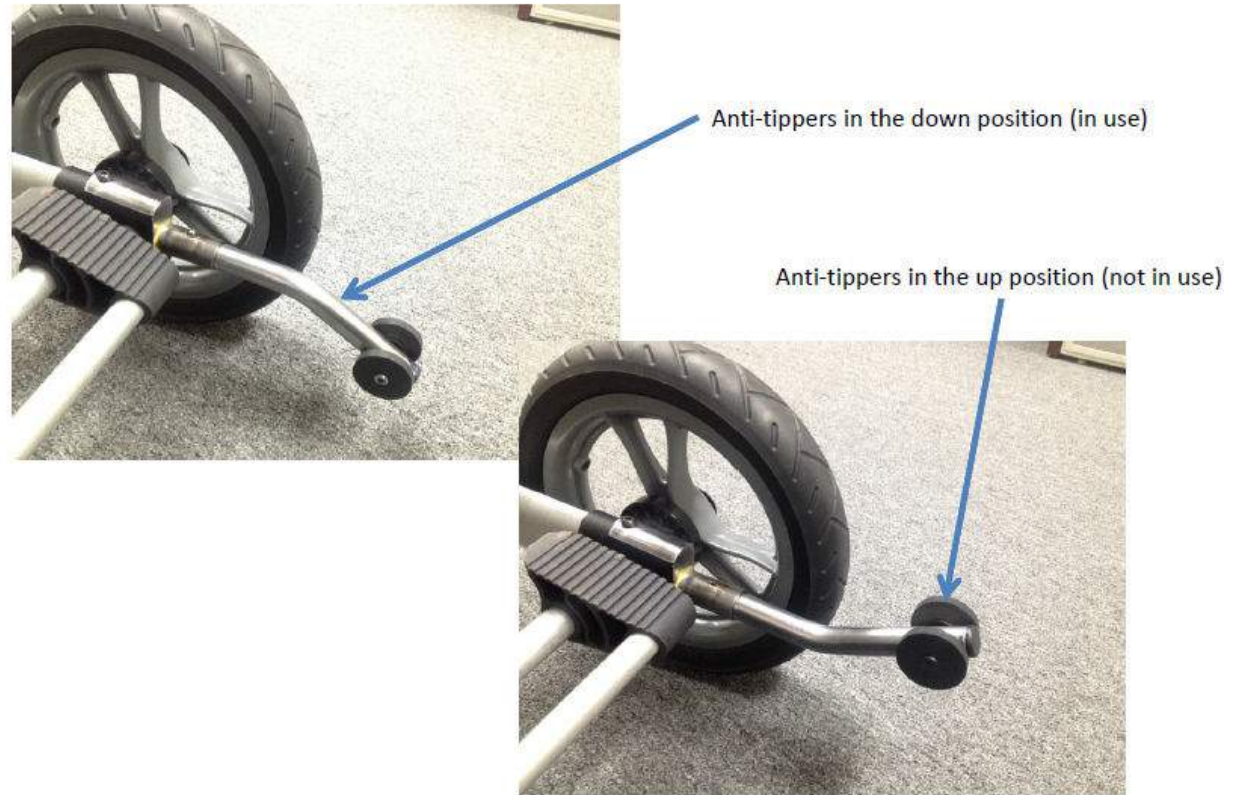


● ● ●

Rear Anti-Tip Tubes

New Accessory Option

The **Rear Anti-Tip Tubes** provide additional safety to prevent the chair from tipping backwards when the users weight is unevenly distributed.



Rear Anti-Tip Tubes

New Accessory Option - Instructions

1. To install the anti-tip tube, align the tube with the end of the round frame tubing located next to the rear wheel. **Fig. 1**
2. Push the detent pin while positioning the anti-tip tube onto the round frame tubing, and push until the “release button” pops through the hole located on the anti tip tube. **Fig. 2**
3. Repeat steps 1 & 2 for opposite side.
4. To remove the anti-tip tubes, perform above steps in reverse order.



Fig. 1



Fig. 2

