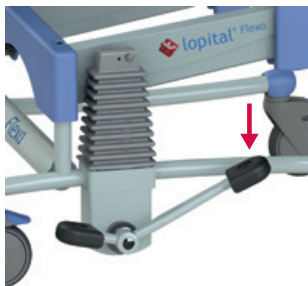


Safety recommendations

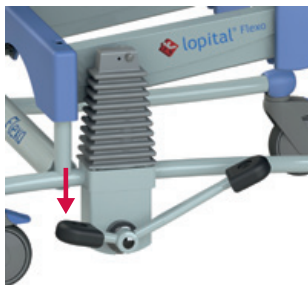
- Read the instructions for use carefully (find this at: www.procare-medical.com) before use.
- Maximum load 330 pounds.
- Make sure that the the brake is set during client transfers from and to the device.
- Place both feet on the foot rests.
- Armrests are locked during up / down movements and arms should rest on armrest.
- Only relocate and move the chair in the lowest position practical.

Operation

Up: Pump down on long arm of lever.



Down: Depress short arm of lever to lower seat. Release to stop downward movement.



Important!
This instruction card may not be considered a replacement for the instructions for use.



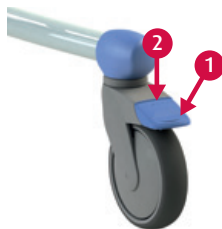
Use

1. Place the chair in position for transfer and fold the foot rests up in preparation for the transfer.
2. Apply the brakes to the chair!
3. Open the armrests and fold these up.
4. Support the patient during the transfer.
5. Lower the armrests and insure the client's feet rest on the foot rests.

Use the same procedure to transfer the patient from the Flexo. (With the exception of # 5.)

Wheel brake

1. Apply Wheel Brake by pressing down on blue tab.
2. Release brake by lifting up blue tab.



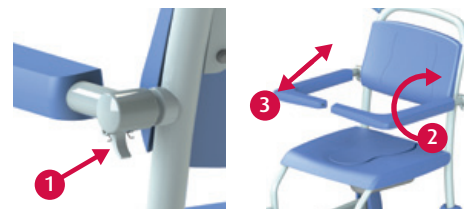
Foot rest



Both foot rests must be turned away for the patient to take a seat in the chair. Make sure that the person places both feet on the foot rests when the chair is moving.

Armrest with front closure

1. Unlocking. (Press up on locking lever).
2. Rotate.
3. Fold up.



Toilet function

- Remove the inlay on the seat before the person sits down in the chair.
- *In combination with toilet:* The Flexo can be placed over almost all toilets. Move the chair up or down to achieve the right position.
- *With bedpan:* The Flexo can also be used as a toilet chair. Simply slide the stainless steel / plastic bedpan under the chair using the guides.

Cleaning and maintenance

The Flexo must be cleaned after every use, with water and regular household cleaning agents. Do not use any abrasive or other aggressive cleaning products. Check the wheels regularly for hairs, dust and soap residues and remove when necessary.

The complete maintenance schedule can be found in the instructions for use (find this at: www.procare-medical.com).

If you have any questions or need service contact:

ProCare Medical
855-528-0421

Instructions for use
For the full instructions for use go to www.ProCare-Medical.com