

Bath Transfer Systems Measurement Guide

Bath/ commode chairs and slider systems are known for their ability to fit in cramped spaces others simply can't. While we have yet to find a bathroom we can't accommodate, a few simple measurements will insure the best fit of your chair. Follow the descriptions below, and enter the measurements. Round up or down to 1/2-inch increments, and use the decimal system (for example, 10.5 for 10 and-half inches).

A Overall length of bathtub:

B Length of bathtub floor:

C Width of bathtub floor (flat portion only - do not include any rounded area)

D Overall width of bathtub:

E Distance between edge of toilet bowl and bathtub:

F Widest portion of toilet bowl (including "wedge" shape up to face tank)

G Distance between edge of toilet bowl to closest objects/wall:

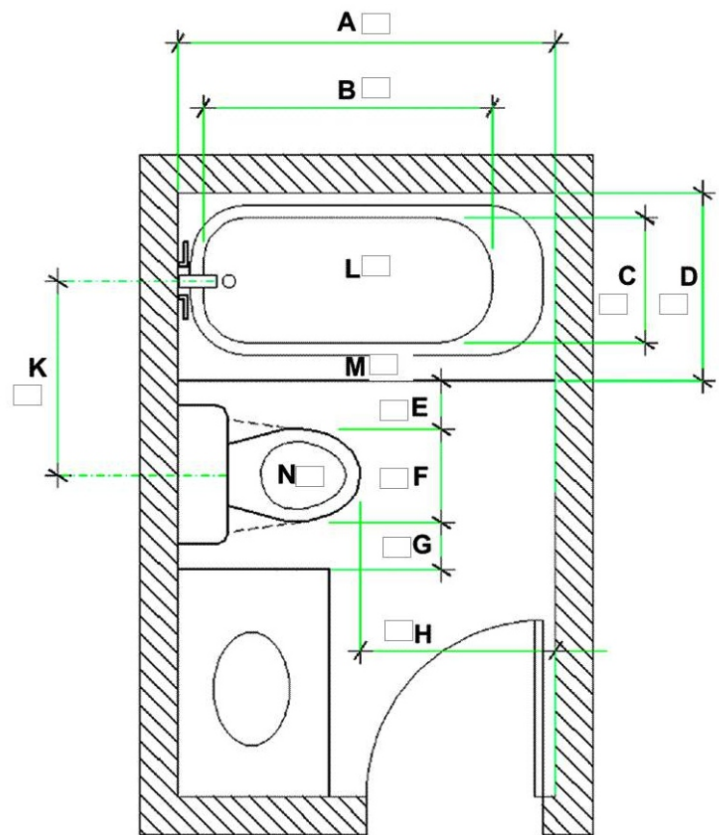
H Distance from front edge of toilet bowl to closest objects/wall:

K Distance from center of toilet bowl to center of bathtub drain/spout:

L Distance from top edge of bathtub to floor of bathtub:

M Distance from top edge of bathtub to bathroom floor:

N Distance from top of toilet bowl to bathroom floor (with seat and lid in raised position)



Note: Please verify the measurements of the product, to ensure proper fitting for the client and adequate space availability in the user environment. Med Mart will not be responsible for incorrect measurements/fitting and inadequate space availability in the user environment.