



Home Assessment Form

[Reset Form](#)
[Clear All](#)

Customer Name		Date:	
Street Address:		Tech's Name:	
City:	State:	Zip:	Totals Systems:
Ceiling Height Room 1:	Room 2:	Room 3:	Funded By Agency or Cash
Client Weight:	Motor & Sling Wt:	Combined Weight: Client, Motor, Sling = Total:	
Arm Length:	6' SWL 300lbs	5' SWL 440lbs	4' SWL 440lbs
Or Custom Arm Length:	Upper Arm Inches	Lower Arm Inches	Rotation Stops. Limits Right & Left Arm Rotation
Top Mounts 8"x4":	Ceiling Mount	Wall/Ceiling Mount	Attachment Accessory: Ceiling Joist Mount
For Foot Mount, Arm Placement, and Doorway Transfers Heights - Refer to Height Range Breakdown Chart			
Foot Mounts:	0" 6" 12" 18" 24"	Attachment Accessory: Floor Joist Mount	
Custom Foot Height:	_____ Inches	* Maximizes Lifting Clearance when between 6"-12" or 12"-18" Foot	
Custom Upper Mast for 16' Ceiling	* 24" Foot Required.		
Arm Hole Position:	Through Doorway Transfer Required		
Material Mounted Into (Metal, Wood, Concrete, etc.)	Foot:	Ceiling:	
Transfer Location:			
Bedroom	Bathroom	Living Room	Other Other
Conversion For Lifting Height And Clearance			
Refer to Height Range Breakdown Chart For 1. & 2.			
1. Distance Between The Upper Arm Knuckle And The Floor:			
2. *Distance Between The Eyelet And The Floor (See Chart Page 3):			
3. *Distance Between The Bottom Of The Motor And The Floor (See Chart Page 4):*			
4. Total Distance From The Bottom Of The Sling and The floor (See Chart Page 4):			
SLINGS		Optional Add On Slings	
Fullback Poly		Repositioning Sling	
Fullback Mesh		Limb Lifter	
Midback Poly			
Midback Mesh			
Toileting Poly			
MOTORS			
Three Optional Motor Choices.			
See Specification Sheet For All Lift Measurements. Each Lift Comes With Motor, Hanger Bar, And Charger.			
8' Ceilings - The Altair Motor has the markets shortest eyelet-to-hanger bar distance.			
Be mindful of minimal lifting and transfer surface heights for which motor you choose.			
Altair 300lbs. Weight Capacity			
Altair 440lbs. Weight Capacity			
CPP 440lbs. Weight Capacity (6' Arm Max SWL is still 300lbs.)			
No Motor			

Sales Management: Matt Mauro - 727-240-9408 - matt.mauro@emr-us.com - 4551 NW 44th Ave | Ocala, FL 34482

Add More parts and notes to the next page



Additional Parts

Part Needed / Description	Part Number	Qty

Notes:



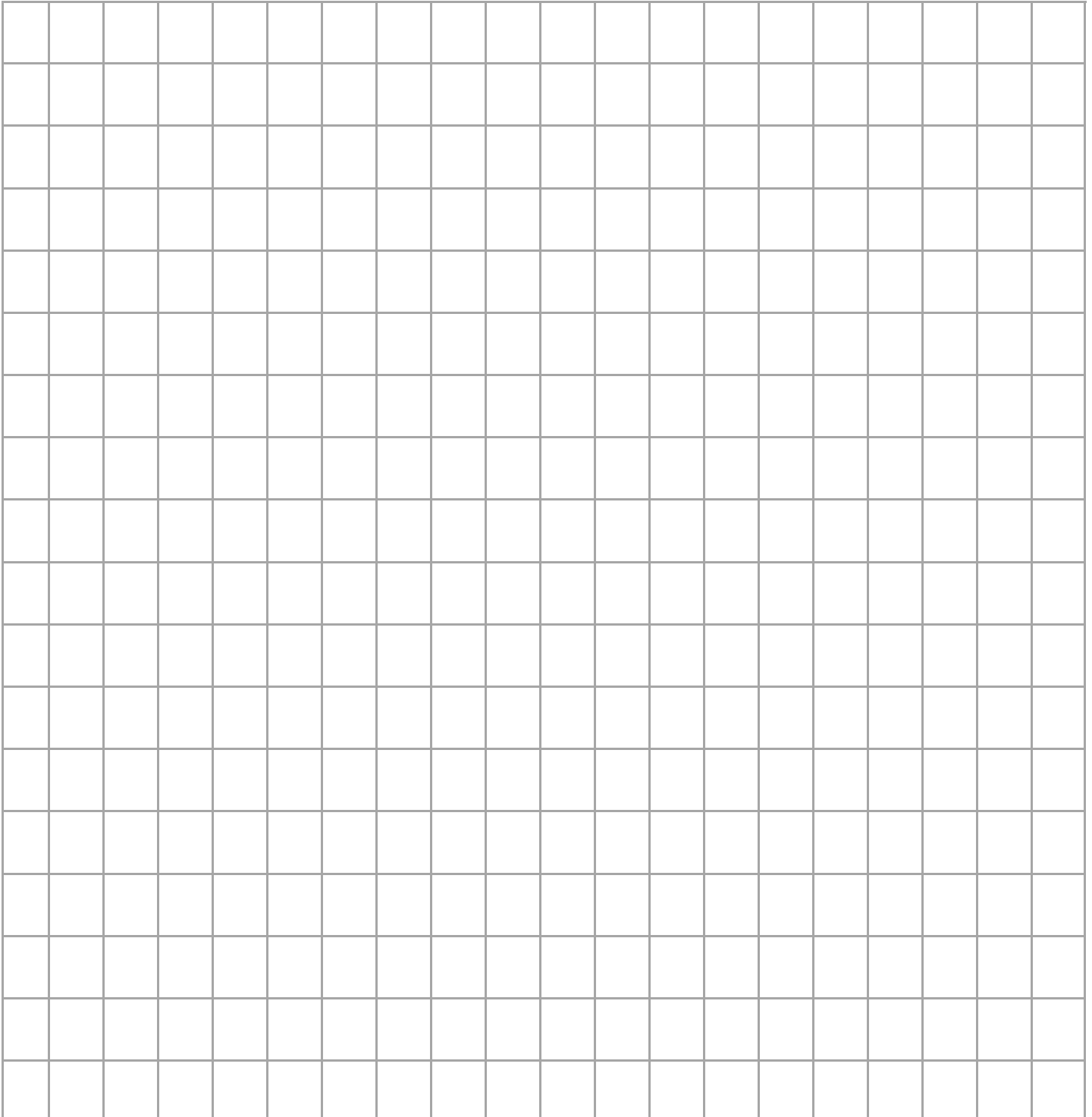
Reflective Ceiling Plan

Include The Following

Unit Location: If you are installing more than one LRT it is recommended to use multiple pages for drawings.

Desired Transfer Locations: Bed, Chair, Kitchen Table, Couch, Tub, Sower, Toilet, Desk, etc...

Obstructions: Ceiling Lights, Ceiling Fans, Ceiling Vents, Floor Duplex, Floor Vents, Lamps, Furniture, Sink, etc..



Sales Management: Matt Mauro - 727-240-9408 - matt.mauro@emr-us.com

Foot Height	Height Breakdown By Each Foot Heights				
	0"	*6"	12"	18"	24"
*Upper Mast Range	7' 6" -12'	8' - 12' 6"	8' 6" - 13'	9' - 13.5'	9' 6" - 14'
Upper Arm Height Range	6' 8"-7' 4"	7' 2"-7'10"	7'8"- 8' 4"	8' 2" - 8'10"	8'8"-9'4"
Lower Arm Height Range	6' 4"-7'	6'10"-7' 6"	7' 4" - 8'	7' 10" - 8'6"	8' 4" - 9'
Eyelet Height Range	5' 10"- 6' 6"	6' 4" - 7'	6'10" - 7' 6"	7'4" - 8'	7'10" - 8'6"
<p>* "6 Foot Provides Maximum Lifting Height For 8 Ceiling</p> <p>* Note: The Upper Mast Has Infite Adjustment Within It's Range</p>					
Upper Arm Height Top	7' 4"	7'10"	8' 4"	8'10"	9' 4"
Upper Arm Height 2nd	7' 2"	7' 8"	8' 2"	8' 8"	9' 2"
Upper Arm Height 3rd	7'	7' 6"	8'	8' 6"	9'
Upper Arm Height 4th	6' 10"	7' 4"	7' 10"	8' 4"	8' 10"
Upper Arm Height Bottom	6' 8"	7' 2"	7' 8"	8' 2"	8' 8"
Lower Arm Height Top	7'	7' 6"	8'	8' 6"	9'
Lower Arm Height 2nd	6' 10"	7' 4"	7' 10"	8' 4"	8' 10"
Lower Arm Height 3rd	6' 8"	7' 2"	7' 8"	8' 2"	8' 8"
Lower Arm Height 4th	6' 6"	7'	7' 6"	8'	8' 6"
Lower Arm Height Bottom	6' 4"	6'10"	7' 4"	7' 10"	8' 4"
Eyelet Height Top	6' 6"	7'	7' 6"	8'	8' 6"
Eyelet Height 2nd	6' 4"	6' 10"	7' 4"	7' 10"	8' 4"
Eyelet Height 3rd	6' 2"	6' 8"	7' 2"	7' 8"	8' 2"
Eyelet Height 4th	6'	6' 6"	7'	7' 6"	8'
Eyelet Height Bottom	5' 10"	6' 4"	6' 10"	7' 4"	7' 10"

Sling Ground Clearance

Clearance between the bottom of the sling and the ground when the motor attached to the LRT eyelet.

Range - There are five arm height positions for each foot. The sling will be in it's shortest upper strap for seated position.

Height is with 6" Foot. Add 6" for 12", 18", 24" Foot, and take off 2" for 0 Foot.

* Leg loop is set a shorter, seated position will be in a slight posterior pelvic tilt.

CCP 440lbs.

Sling Model	Small	Medium	Large	XL
Fullback Sling	36"	32"	30"	26" *28.5"
Midback Sling	36"	32"	32	30 *28
Amputee Sling	28"	26" *29	23" *25	
Toileting Sling				

Alt 300lbs and 440lbs

Sling Model	Small	Medium	Large	XL
Fullback Sling	36"	34"	32"	28"
Midback Sling	36"	36"	36"	32"
Amputee Sling	31"	30"	29"	
Toileting Sling				

Lift Height Measurement

Measurements below are based on 6" foot at 8' ceiling in the top arm position.

Alt Lifts:

Motor connection at the eyelet to sling attachment: Measurement: base on the lifts design, the sling attached to hanger under a load it is 10.5". The measurement is 9.5" when not.

Sling to Floor: Sling attached to hanger under a load to the floor is 71"

CCP Lift: Motor connection at the eyelet to sling attachment: 16"

Motor connection at the eyelet to sling attachment: Measurement remains the same under load or not.

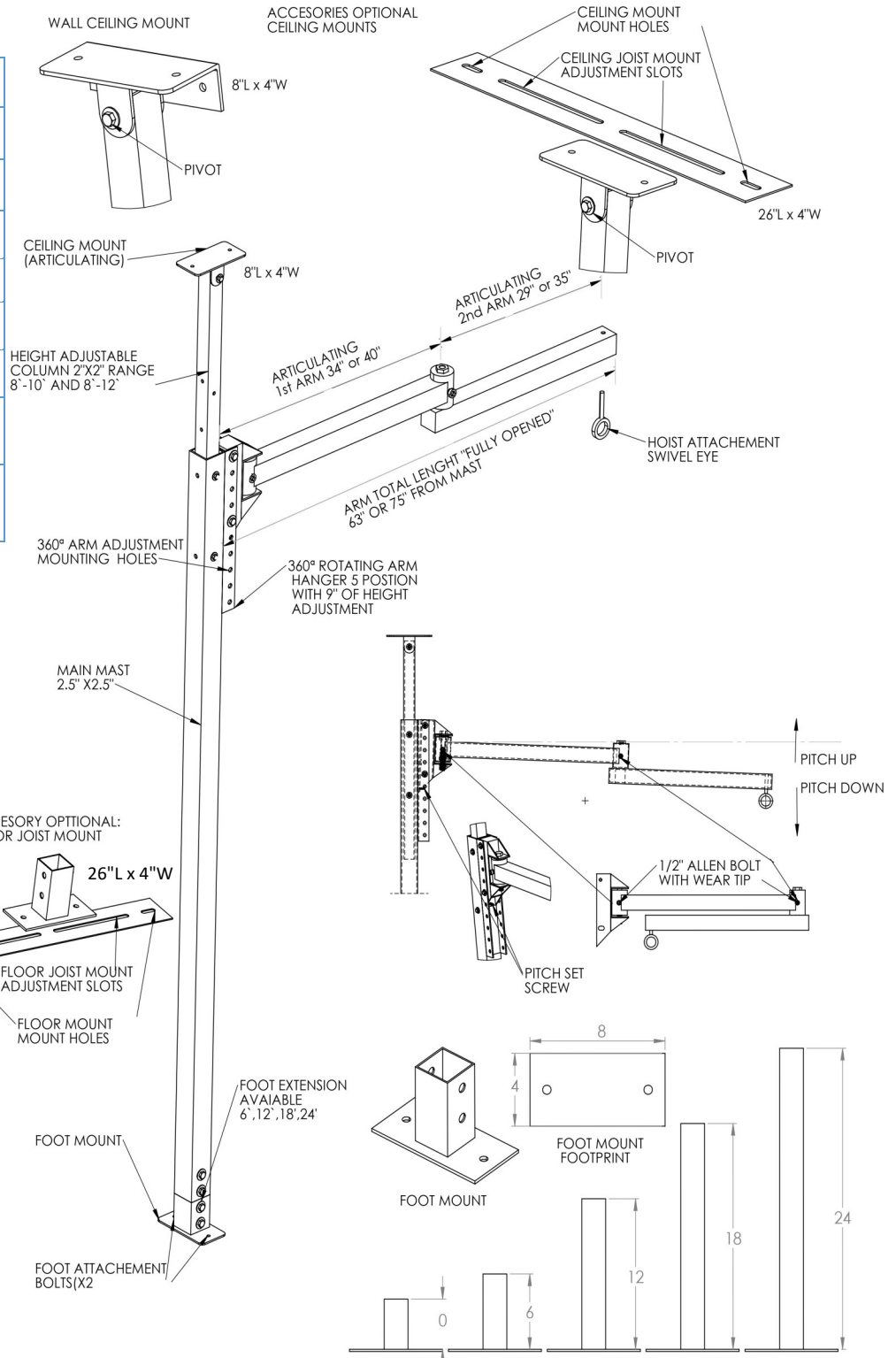
Sling to Floor: Sling attached to hanger under a load to the floor is 66"

LRT Technical Specification

Implementation:	Residential, Post-Acute, and, Acute
Function:	Facilitating Precise user transfer to designated location through lifting and lowering procedures
Fabrication:	Corrosion-resistant powder coated steel
Warranty:	Five Year Limited Warranty
Navigation:	Powered raising and lowering with 3rd party motor
Affixing:	Mounting to: (1) Floor-Cathedral Ceiling, (2) Floor-Ceiling, (3) Floor-Wall-Ceiling (4) Floor-Wall
Affixing Bolts:	(1) 7/16" (2) Length: depends on upon specific mounting construction and installation hardware
Unit Weight Capacity	LRT with 6' Arm: 300lbs LRT with 5' Arm: 440lbs.

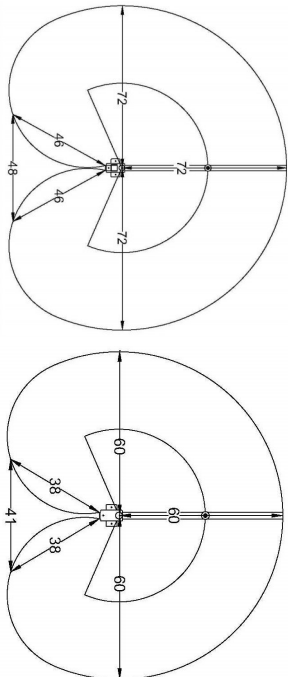
Weights & Dimension's

Part #	LRT-6	LRT-5
Mast Weight:	74lbs.	74lbs.
Articulating Arm Weight:	51lbs.	46lbs.
Foot Weight =LBS: 0"-3, 6"-4, 12"-7, 18"-9.9, 24"-12		
Ceiling Mounts: Ceiling - 2lbs, Wall/Ceiling - 2.5lbs.		
Optional- Joist Mount Floor and Ceiling: 5lbs.		
Total Weight in LBS:	130 - 144.5	125 -139.5
Ceiling Height Range:	7'6"- 14' 16' Custom	7'6"- 14' 16' Custom
Main Mast Length & Box	7' Mast - Box 8'	7' Mast Box 8'



Circumference 5' and 6' Arm

4' and custom lengths have proportionate dimensions



Weights and dimensions are approximate and are provided for general reference and are subject to change.