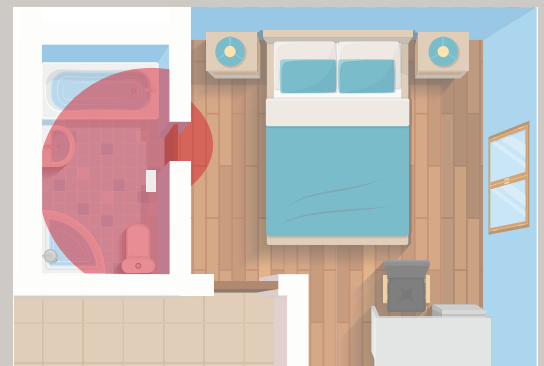
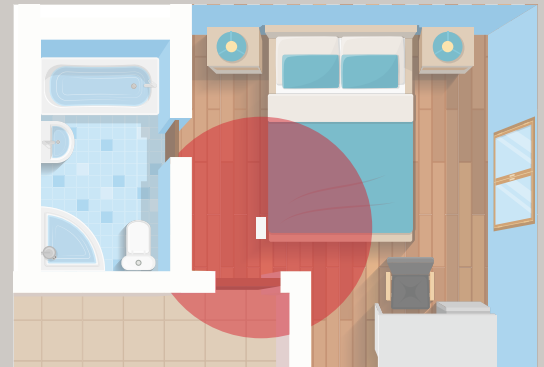
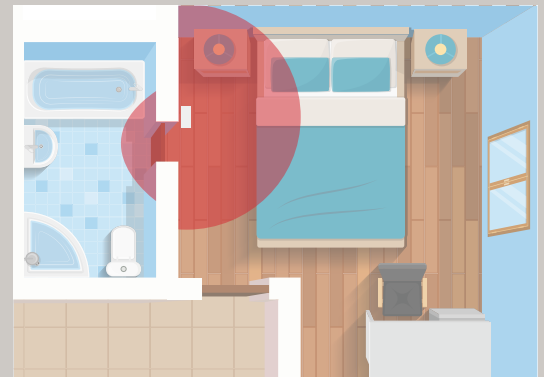


## Patient Transfer Lift

The ORBIT™ Patient Transfer Lift is an American-made, safe, and convenient device to assist in lifting and transferring individuals with limited mobility. This unique patient transfer lift features an articulating arm and pivoting stanchion with brake that offers a reach of up to 5' and rotates 360-degrees, providing precise, all-round flexibility, even in tight spaces. Designed to be used with your favorite ancillary medical equipment, the ORBIT's non-obtrusive design allows the unit to be placed in small bedrooms and bathrooms and can be used with any bed size.



### Precise control and maneuverability

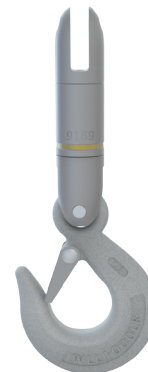


# Features and Benefits

- **Range of reach:** With its articulating arm and stanchion each rotating 360-degrees (allowing unmatched range of motion in all directions) and the arm's 3-point height adjustment (allowing the flexibility to set vertical clearance as needed), the ORBIT is the ideal transfer solution.
- **Reach options and load capacity:** Two reach options are available. The 5' arm offers a 10' range of motion and features a 440 lb. weight capacity. A 4' arm with 8' range of motion and 600 lb. weight capacity is also available.
- **Brake:** Slows the rotation of the stanchion by creating drag, allowing precise control.
- **Small footprint:** Unlike fixed track, rolling, or portable lifting systems, the ORBIT is not intrusive to the home or surrounding space. Its compact design allows the ORBIT to be mounted out of the way, in a location that's most convenient for the user or caregiver.
- **Minimal assembly:** Due to its single post design, installation time is reduced, which means minimal disruption for the user or their family. The ORBIT can be installed floor-to-ceiling or floor-to-wall.
- **Ceiling height accommodation:** Models are available to reach ceiling heights of 8'-12'.
- **Compact storage:** The standard floor-to-wall or floor-to-ceiling mount system provides flexibility and reduces clutter. When wall mounted and not in use, the arm may be folded flat to the wall and out of the way. When ceiling mounted, the arm may be folded in half and positioned in any direction.
- **Convenient:** Multiple units can be placed throughout the home for ultimate convenience. Simply move the ancillary medical equipment (portable motor, sling, etc.) from one ORBIT to another as needed.
- **Versatile:** Relocating the ORBIT is a simple process with minimal repair work.
- **Hook tab:** Built into the articulating arm for ancillary medical equipment attachment. Optional swivel hook is available if needed.

## Quick Specs

<b>Models:</b>	4' arm, 5' arm, 8'-10' stanchion, 8'-12' stanchion
<b>Application:</b>	Residential and institutional
<b>Operation:</b>	Patient lifting and transferring
<b>Mounting:</b>	Bolted floor-to-ceiling or floor-to-wall
<b>Weight Capacity:</b>	600 lbs. (4' arm), 440 lbs. (5' arm)
<b>Stanchion Dimensions:</b>	8-12' H x 2.5" W x 2.5" D (approx.)



**Optional swivel hook** is available to use with your favorite motor (swivel action helps to prevent motor tape from twisting).



The ORBIT Patient Transfer Lift is made in the USA and is covered under our 5-year warranty.

customerservice@ezaccess.com | 1.800.451.1903 | www.ezaccess.com