

# GOLDEN EAGLE



## Owner's Manual Model GR595



Thank you for purchasing your Golden Eagle Scooter. We are honored you have chosen Golden Technologies for your mobility needs.

### Golden Eagle Model GR595

#### Standard Packing List:

- 1 Owner's Manual
- 1 Front Basket
- 2 Mirrors (Screw in style)
- 1 Seat Assembly
- 1 Safety Flag
- 2 Keys
- 1 Battery Charger
- 1 Cell Phone Holder
- 1 Rear Storage Compartment



#### DISCLAIMER

We ask that you read this manual completely before operating your new Golden Eagle. Golden Technologies, Inc. is not and cannot be held responsible for any damage or injury incurred due to improper or unsafe use of the Golden Eagle scooter. Golden Technologies, Inc. specifically disclaims responsibility for any bodily injury or property damage that may occur during any use that does not comply with applicable federal, state, or local laws or ordinances.

**Intended Use:** The intended use of the Golden Eagle is to provide mobility to persons limited to a seated position that are capable of operating an electric scooter.

## CONTENTS

I. INTRODUCTION.....	4-6
Features and Benefits.....	5
Accessories for the Golden Eagle Scooter.....	6
II. SAFETY.....	7-11
III. EMI/RFI.....	12
IV. YOUR GOLDEN EAGLE.....	13
Specifications.....	14-15
V. OPERATION.....	16
Control Panel.....	16-17
Control Options.....	17
Seating.....	18-19
Freewheel Mode.....	20
VI. RIDING YOUR GOLDEN EAGLE Scooter.....	21
Mounting.....	21
Basic Driving.....	22
Steering in Tight Spots.....	23-24
VII. DISASSEMBLY.....	25-26
VIII. ASSEMBLY.....	27-28
IX. TRANSPORTING YOUR GOLDEN EAGLE.....	29
X. CARE AND MAINTENANCE.....	30
Routine Maintenance.....	30
Cleaning Your GOLDEN EAGLE.....	30
Batteries and Charging.....	31
If Your GOLDEN EAGLE Does Not Operate.....	32
Proper Tire Inflation.....	33
Diagnostics.....	33-34
XI. WARRANTY.....	35-36
Warranty/Registration Card.....	37

# I. INTRODUCTION

Congratulations on the purchase of your new Golden Eagle scooter. The Golden Eagle combines cutting edge technology with attractive designs that are also highly functional in today's world. We at Golden Technologies, Inc. know that you have chosen a scooter that will give you years of dependable operation and also will enhance the quality of your life by providing you with the mobility to experience an active daily lifestyle.

Even though your new Golden Eagle is both user-friendly and designed for maximum maneuverability in even the tightest spaces, we ask that you please read, understand and follow all of the instructions and suggestions in this manual before you operate your Golden Eagle for the first time. The safe use of your new scooter is very important to us.

If you feel that you do not understand the instructions and suggestions presented in this owner's manual, or if, for any reason, you do not feel capable of performing the activities necessary to assemble, disassemble, operate, or maintain your Golden Eagle, please contact your local Golden Technologies, Inc. provider or call Golden Technologies, Inc. Technical Support Services at (800) 624-6374.

Golden Technologies, Inc. cannot be held responsible for personal injury or property damage resulting from the unsafe or the improper use of any of our personal mobility products. Also, Golden Technologies, Inc. cannot be held responsible for personal injury or property damage resulting from attempts to follow instructions, suggestions, and guidelines presented in this owner's manual.

Our Research and Development Department, our Quality Control Department, and our Engineering Department have used the latest product specifications and the latest product design information to manufacture your Golden Eagle. Golden Technologies, Inc. reserves the right to implement changes into our product lines when those changes become desirable or necessary. If changes are implemented into our product line, there may be minor differences between the product you purchased and the illustrations and instructions in this owner's manual.

Please fill out and mail the enclosed warranty registration card. Registration is also available @ [www.goldentech.com](http://www.goldentech.com). We at Golden Technologies, Inc. would appreciate hearing about the dependability of your Golden Eagle and about the convenience of mobility it has provided for you. We would also appreciate hearing about the service you received from your local Golden Technologies, Inc. provider or representative.

Golden Technologies, Inc.  
401 Bridge Street  
Old Forge, PA 18518

Phone: (570) 451-7477  
Fax: (570) 451-7494  
Toll free: (800) 624-6374

For more information about our products and services or to send us your comments, please visit our website at [www.goldentech.com](http://www.goldentech.com)

# I. INTRODUCTION

## FEATURES AND BENEFITS

Your Golden Eagle scooter has been designed with your comfort in mind. It has also been designed to be a safe method of transportation when safety and operating instructions are followed. Please review the features and benefits of certain components of the Golden Eagle scooter below.

### **Tiller:**

Easy to use handle offers multiple adjustments to find your most comfortable driving position. Convenient side mounted charger port, USB port, and controls for ease of music selection.

### **Storage:**

The Golden Eagle scooter comes standard with a removable plastic storage basket and a rear storage compartment.

### **Lights:**

#### **Headlights (and taillights):**

A standard feature, the headlights, taillights, and turn signal indicators feature bright, long-lasting LED bulbs.

### **Bumpers:**

The Golden Eagle scooter comes standard with padded front and rear bumpers designed to protect the front and rear shrouds from scratches and cracks.

### **Control Panel:**

Easy to read LCD screen with speedometer, odometer, and battery gauge. Control from top to bottom: Oversized speed control knob, head light switch, horn button, left and right turn signals, and flasher switch.

### **Delta Tiller Handle:**

Offers rubber coated hand rests for comfort and dual throttle control levers for easy right or left hand use. Also, dual mirrors and a cell phone holder are standard features.

### **Captain's**

#### **Highback Seat:**

The seat features angle and width adjustable arm-rests, and a slide seat to find the most comfortable position as well as to make transfers easier.

### **Easy Access**

#### **Batteries:**

Located under the seat, the batteries can be accessed by simply removing the battery cover.

### **Floor Mat:**

The Golden Eagle comes standard with a removable non-slip rubber floor mat.

### **Pneumatic Tires:**

The Golden Eagle comes standard with air filled tires to provide the smoothest ride available.



**Figure 1. Golden Eagle (Model: GR595) Features**

# I. INTRODUCTION

## ACCESSORIES FOR THE GOLDEN EAGLE SCOOTER:

A variety of accessories are available for your Golden Eagle scooter. Please contact your Authorized Golden Technologies Provider for more information or to order.

- Cane Holder Tube
- Quad Cane Holder
- Walker Holder
- Oxygen Tank Holder
- Cup Holder
- Travel Case
- Forearm Crutch Holder
- Safety Flag
- Scooter Cover
- Rear Basket
- Seat Belt
- Cell Phone Holder
- Storage Compartment

\*Some accessories require a mounting bracket or mounting clips. Please check with your provider to find out if the accessory you would like to order requires a mounting bracket or mounting clips.

### Safety Guidelines

The symbols below are used in the owner's manual and/or on the product to identify warnings and to notify you of important safety information. Make sure you read and understand them completely.



**WARNING!** Indicate(s) a hazardous situation which, if not avoided, could result in death or serious injury. This icon is represented as a black symbol on a yellow triangle with a black border.



**MANDATORY!** Failure to perform mandatory actions can cause personal injury and/or equipment damage. This icon is represented as a white symbol on a blue dot with a white border.



**PROHIBITED!** Indicate(s) an action(s) that should not be performed under any circumstance. Failure to adhere can cause personal injury and/or equipment damage. This icon is represented as a black symbol with a red circle and red slash.

### Safety Symbols

The symbols below identify warnings, mandatory actions, and prohibited actions. They can be found in the owner's manual and/or on the product. Make sure you understand all safety labels before operating the product. Do not remove safety labels from the product.



Read and follow the owner's manual!



Explosive conditions exist!



Indoor use only!



Use only AGM or Gel-Cell batteries!



Avoid transmitters!



Hot surface!



Pinch/Crush Hazard!



Do not place into trash!



Electrical hazard!



Corrosive chemicals inside battery!



Recycle



Do not use personal electronic devices!

## II. SAFETY

Your Golden Eagle is a battery-operated personal mobility vehicle. Please exercise caution and consideration when you are operating it. Driving your Golden Eagle carefully and thoughtfully will help ensure your personal safety and the safety of other people.



**MANDATORY!** Read completely and understand this owner's manual before assembling, operating, transporting, or disassembling your Golden Eagle scooter.

### NOTICE

Before learning to operate your Golden Eagle, have your authorized Golden Technologies, Inc. provider determine if it is advisable for you to practice getting on and off your Golden Eagle and operating it in the presence of an attendant.

### BEFORE GETTING ON YOUR GOLDEN EAGLE

- Check to be certain that the power is turned off. See section V. "Operation" in this manual. This will eliminate the possibility of accidentally activating the paddle controls and causing injury to yourself and/or others.
- Check to be certain that your Golden Eagle's freewheel lever is in the engaged position. See section V. "Operation" in this manual.
- Flip up the armrest(s).



WARNING

**When getting on or off your Golden Eagle, keep your weight toward the middle of the deck. Putting most or all of your weight on the edge of the deck may cause an unstable condition.**

### GETTING ON YOUR GOLDEN EAGLE

- Position the seat for safe and easy mounting. Ensure that the seat is facing forward. See Section V. "Operation."
- Return tiller to full upright position if necessary.
- Carefully place one foot on the approximate center of the deck and seat yourself comfortably and securely on the seat.
- Flip down the armrest(s).

### GETTING OFF YOUR GOLDEN EAGLE

- Make certain that the power is turned off and the key is removed.
- Return tiller to full upright position
- Flip up the armrest(s).
- Carefully place one foot on the ground, transfer your weight to that leg, and slowly come to a standing position.
- Step away from the scooter.

### MAXIMUM WEIGHT

Your Golden Eagle has been rated to a maximum payload (operator and anything else being carried onboard) of 500 pounds. Exceeding the maximum weight rating will void the warranty.



WARNING

**Exceeding the maximum weight rating may result in injury to yourself and/or others.**

## II. SAFETY

### DRIVING ON INCLINES

- For maximum stability, lean forward in your Golden Eagle's seat while proceeding up ramps, inclines, curbs, or any low rise. See figure 2.
- Drive with caution when attempting to negotiate any incline, even handicap access ramps.
- **Always** climb or descend an incline by driving straight up or straight down the face of the slope. See figure 2.
- **Do not** traverse or drive across the face of an incline in any direction. See figure 3.
- **Do not** attempt to negotiate an incline that is covered with snow, ice, salt, cut or wet grass, leaves, or any other potentially hazardous material.
- **Do not** drive your scooter in reverse down an incline.
- Try to keep your Golden Eagle moving when climbing an incline. If you do come to a stop, restart and accelerate slowly and carefully.
- **Do not** try to descend or climb a slope whose gradient is greater than recommended.

**\*Golden Eagle maximum recommended incline is 7.5°**



*Figure 2. Going Up an Incline*



*Figure 3. Traversing an Incline*



**WARNING**

**If, while you are driving down a slope, your scooter starts to move faster than you feel is safe, release the throttle control lever and allow your Golden Eagle to come to a stop. When you feel that you again have control of your scooter, push the throttle control lever forward and continue safely down the remainder of the slope.**

### DRIVING DOWN A DECLINE

- Lower speed setting
- Whenever it is safely possible, drive forward down any ramp, low rise, or incline.

Golden Technologies, Inc. does not recommend that you drive your scooter in reverse down any incline, ramp, curb, or low rise. Backing down any slope may create a very hazardous situation. If it is necessary to back down a slope follow one of two procedures.



## II. SAFETY

### CAUTION

When using either of the following procedures to back down a slope, Golden Technologies, Inc. strongly advises that you have the assistance of another person.

#### **Procedure 1 - Under Power**

1. Set the key switch to the “Off” position. See section V. “Operation.”
2. **Dismount your** Golden Eagle.
3. Set the key switch to the “On” position. See section V. “Operation.”
4. While standing alongside your scooter, carefully operate the controls at the lowest speed setting. See section V. “Operation.”
5. Slowly and carefully back your scooter down the incline.
6. Carefully remount your Golden Eagle and resume normal operation.



### WARNING

**When your scooter is in freewheel mode, the park brake is released. If the batteries are dead, the motor braking system will not work. The weight of the scooter on a slope may cause you to lose control of the scooter. If you do not feel capable of manually controlling your scooter down the slope, request assistance or do not attempt to use this procedure.**

#### **Procedure 2 - Emergency (No Power)**

1. Set the key switch to the “Off” position. See section V. “Operation.”
2. **Dismount your** Golden Eagle.
3. Set the freewheel lever to “Disengaged.”
4. While standing alongside the scooter, carefully manually maneuver it down the slope.
5. When you have reached a level surface at the bottom of the slope, position the freewheel lever in the engaged position. See figure 11 on page 20.
6. To restore power, set the key switch to the “On” position. See section V. “Operation.”

#### **Motor Braking System**

Your scooter is equipped with a system that uses the motor to aid in braking. This motor brake system is designed to work when the key is in either the on position or the off position.

When the key switch is in the on position, the freewheel is in the engaged position, and the scooter is under power, the motor will help slow down the scooter as soon as you take your hand off of the throttle lever.

When the key switch is in the off position and the freewheel lever is in the disengaged position, the motor brake system will keep you from pushing the scooter too fast (i.e. down a slope).

You may notice this when pushing the scooter. The scooter will move freely until you reach a certain speed. You will then encounter some resistance as the motor brake system is activated.

## II. SAFETY

### MEDICATION

Always check with your physician to determine if any of the medications you are taking may affect your judgment and/or your ability to operate your Golden Eagle. Also check with your physician concerning your physical ability to operate a scooter.



WARNING

**Do not connect or allow anyone except an authorized Golden Technologies, Inc. provider to connect any electrical or mechanical device to your Golden Eagle. Unauthorized accessories will void the warranty and may cause injury.**

### NOTICE

Please remember that while on your Golden Eagle, you are a motorized pedestrian. You must observe and obey all pedestrian rules and regulations for the locale in which you are riding.

Please use your Golden Eagle scooter often and allow it to expand the horizons of your daily life. The more mobility your Golden Eagle brings to you, the happier you will be, and the more satisfied we at Golden Technologies, Inc. will be! But as with all things, especially motor operated vehicles, observing a few rules and safety considerations will help ensure safe scooter operation. So please follow the rules below.

### RULES FOR USE AND OTHER SAFETY CONSIDERATIONS



WARNING

**Read completely and understand this owner's manual before assembling, operating, transporting, or disassembling your Golden Eagle.**

- **Always** operate your Golden Eagle with thought, care, and safety.
- **Do not** attempt to use your Golden Eagle on an escalator. Always use an elevator.
- **Do not** carry passengers under any circumstances.
- **Do not** mount or dismount your Golden Eagle unless the brake is engaged.
- **Always** make sure that the key switch is set to "Off" before mounting or dismounting your scooter.
- **Do not** back your Golden Eagle down an incline or across an uneven surface.
- **Do not** turn your scooter suddenly at full speed.
- **Always** make sure the seat is locked in the forward position before operating your Golden Eagle.
- **Always** come to a full stop before changing direction from forward to reverse or from reverse to forward.
- **Do not** operate your Golden Eagle where you could not safely or legally walk.
- **Do not** climb ramps or curbs that exceed your scooter's capacity.
- **Always** approach curbs and inclines straight on.
- **Always** be aware of and careful near mechanical pinch points especially when assembling and disassembling your scooter.
- **Never** sit on your Golden Eagle when it is being transported.
- **Always** fasten down your Golden Eagle securely with an approved tie-down system while transporting your scooter.
- **Always** tie down or remove the seat during outside transport.
- **Never** operate your scooter if it is not functioning properly.

## II. SAFETY

### RULES FOR USE AND OTHER SAFETY CONSIDERATIONS – continued



#### WARNING

- **Always** use caution when driving on soft or uneven surfaces such as grass or gravel. Also use caution on decks where there is no railing.
- **Never** drive on the roadway, except when you must cross the street.
- **Always** cross streets at intersections and use crosswalks or the most direct route, making sure that your path is clear and that you are visible to motor traffic.
- **Never** drive your Golden Eagle up or down a step or curb that is higher than the ground clearance listed on the specifications chart (see pages 14-15).
- **Never** back up or down a step or curb.
- **Do not** drive your Golden Eagle in icy or salted conditions.
- **Never** operate your Golden Eagle while you are under the influence of alcohol.
- **Do not** operate or store your Golden Eagle where it will be exposed to rain, snow, mist, and below freezing temperatures.
- **Always** keep your tires properly inflated.

#### CAUTION



**Do not place hot liquids into the bottle holder. The hot liquid could spill while operating the scooter, causing you to get burned.**

#### CAUTION

**Use caution when driving your Golden Eagle scooter on rough or uneven terrain, soft dirt, deep grass, and/or loose gravel.**



#### WARNING

**Over-inflated tires pose a risk of bursting and can cause serious injury. Under-inflated tires will cause significant loss of operational range and will also cause the motor control board to overheat.**



#### WARNING

**Should you encounter a problem with the operation of your mobility device such as a mechanical or electrical problem immediately stop using the product. Disconnect the batteries then contact the provider from whom you purchased your mobility device for evaluation of the problem and repair if needed.**

### III. EMI/RFI

The rapid development of electronics, especially in the area of communications, has saturated our environment with electromagnetic (radio) waves that are emitted by television transmitters, cellular phones, citizen's band radios (CBs), amateur radios (ham radios), wireless computer links, microwave transmitters, paging transmitters, etc. These electromagnetic (EM) waves are invisible and increase in strength the closer one gets to the source of transmission. When these energy waves act upon electrical devices and cause them to malfunction or to function in an erratic or uncontrolled manner, they are referred to as Electromagnetic Interference (EMI) or Radio Frequency Interference (RFI).

#### EMI/RFI AND YOUR GOLDEN EAGLE

All electrically powered vehicles, including scooters are susceptible to Electromagnetic Interference/Radio Frequency Interference (EMI/RFI). This interference could result in abnormal, unintended movement of your Golden Eagle.



WARNING

**Unintended movement or brake release could cause an accident or injury.**

The FDA has determined that each make and model of scooter can resist EMI/RFI to a certain level. The higher the level of resistance, the greater the degree of protection from EMI/RFI—measured in volts per meter (V/m). The FDA has also determined that current technology is capable of providing 20 V/m of resistance to EMI/RFI, which would provide useful protection against common sources of interference. This product has been tested and has passed an immunity level of 20 V/m.

#### EMI/RFI RECOMMENDATIONS



**PROHIBITED!** Do not turn on or use hand-held personal electronic communication devices such as cellular phones, walkie-talkies, and CB radios while your scooter is turned on.

- Be aware of any nearby transmitters (radio, television, microwave, etc.) on your intended route and avoid operating your scooter close to any of those transmitters.
- Turn off the power if your Golden Eagle is going to be in a stationary position for any length of time.
- Be aware that adding accessories or components or modifying your scooter may make it more susceptible to EMI/RFI.
- If unintended movement or park brake release occurs, turn your scooter off as soon as it is safe to do so.
- Report all incidents of unintended movement or park brake failure to Golden Technologies, Inc. Technical Service at (800) 624-6374.



WARNING

**Turn off your scooter as soon as it is safely possible if unintended or uncontrollable motion occurs or if unintended park brake release occurs.**

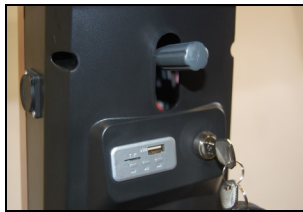
## IV. YOUR GOLDEN EAGLE



Bottle Holder



Seat Rotation Lever  
&  
Seat Slide Lever



Tiller Handle



Freewheel Lever

**Figure 4. Your Golden Eagle (Model GR595)**

### FOR YOUR RECORDS

Please fill in your Golden Eagle's information below. This information will be useful in the event that you ever need to contact Golden Technologies, Inc. concerning your scooter.

Model \_\_\_\_\_ Serial Number \_\_\_\_\_

Date of Purchase \_\_\_\_\_

Provider Name \_\_\_\_\_

Company \_\_\_\_\_

Address \_\_\_\_\_

City \_\_\_\_\_ State \_\_\_\_\_ Zip \_\_\_\_\_

Please remember to fill in and return your warranty registration card in the back of this manual.

## IV. YOUR GOLDEN EAGLE

Specification	GR595
Medicare Code	Not Coded
Weight capacity	500 lbs.
Drive Wheels	Rear
Maximum speed	8 mph
Operating Range <sup>1</sup>	32 miles
Ground Clearance to Center Deck	5"
Ground Clearance to Transaxle/Motor	3.5"
Turning Radius	69"
Type Batteries	2-NF22 or 2-75 AH
Colors	Red
Freewheel Mode	Yes
Electronic Speed Control	Yes
Electro-Mechanical Brakes	Yes
Mechanical Hand Brake	No
Charger	Off-board
Controller	140 Amp
<b>Dimensions:</b>	
Length	56.5"
Width	27"
Height (ground to top of back of seat)	49" – 50"
Height (ground to top of back of headrest)	57" – 62.5"
Ground to Top of Seat	27" – 28"
Ground to Top of Deck	5.75"
Deck to Top of Seat	18.75" – 19.75"
Number of Seat Height Positions	2
Size of Increments	1"
Front axle to Rear axle	40"
<b>Weight of Unit: (assembled)</b>	300 lbs.
Base	239 lbs.
Seat with Arms	49.5 lbs.
Batteries	37 lbs./ea. (NF22) 52 lbs./ea. (75AH)

## IV. YOUR GOLDEN EAGLE

Specification	GR595
<b>Tires:</b>	Pneumatic
Front <sup>3</sup>	13"
Rear <sup>3</sup>	13"
Rear Anti-Tip Wheels	3"
<b>Standard Seat:</b>	Captain's Highback
Slide Seat	Standard
Back Height (no headrest)	23.75"
Back Height (with headrest)	30.75" – 36.25"
Width x Depth	20" x 18"
Color	Black
<b>Warranty:</b>	
Frame	Five Years
Drive Train	2 Year
Electronics <sup>2</sup>	2 Year
Batteries	1 Year

**\* Notes:**

1. Battery range at 200 lbs., and will vary due to rider weight, drive surface, terrain, and battery type.
2. Electronics warranty excludes batteries.
3. Inflate tires to 35 psi.

Literature is current at the time of printing. Golden Technologies reserves the right to make changes to the product or literature at any time.

## V. OPERATION



**Figure 5. Delta Tiller Control Panel with LCD Display**

### CONTROL PANEL

#### Speed Adjustment Dial

- The speed adjustment dial allows you to pre-select the maximum top speed of your Golden Eagle. See figure 5.
- Turn the dial counterclockwise to operate your scooter at the lowest speed level.
- Turn the dial clockwise to increase the operational speed of your scooter.
- We recommend that you select a speed setting at which you feel comfortable, safe, and in control of your Golden Eagle.

#### Key Switch

This switch turns the power on and off to your Golden Eagle. See figure 6.

- Insert the key into the key switch.
- Turn the key 90 degrees clockwise to turn on your scooter's power. The LCD (Liquid Crystal Display) display will light up indicating that power is on.
- Turn the key back to the vertical position to turn off your scooter's power.



**Figure 6. Key Switch**

**CAUTION** Always make certain that the key is removed from the key switch before getting on or off your Golden Eagle or before lowering the tiller completely.

#### Horn Button

Press this button to sound the horn. See figure 5.

#### DC Battery Voltage Meter

This meter (see figure 5) shows the amount of voltage in your Golden Eagle's batteries.

- Full bars indicates a full charge on the batteries.
- Lesser bars indicates a diminished charge left on the batteries.
- One bar indicates that the batteries have a minimal charge remaining.

See section X. "Care and Maintenance" for instruction concerning charging the batteries.



## V. OPERATION

### USB Charging Port and Bluetooth

Connect the device to be charged to the USB port. See figure 7.



**Figure 7. USB and Bluetooth**

### How to connect your Bluetooth?

1. Open Bluetooth on your Phone. 
2. Search and find equipment named “Golden”.  Golden 
3. Select “Golden” to connect it with your phone. Now you can use your phone .

**USB Disclaimer:** The supplied USB charging port is only intended to be used with appropriate smart devices such as phones or tablets. Please refer to device manufacturer’s charging requirements before using. Golden Technologies excludes liability for any damages or data loss regarding the charging device on a computer or other electronic device connected to the USB port.

### Delta Tiller Throttle Control Lever

The Delta Tiller enables you to use only one hand (either the right or left) to operate both the speed and the direction of the Golden Eagle. This self-centering lever system controls your Golden Eagle’s speed (up to the maximum speed set by the speed adjustment dial) and its forward and reverse direction. See figure 5.

### To drive forward use either of the following:

- Use your right hand fingers to pull back on the right side of the throttle control lever.
- Use your left thumb to push the left side of the throttle control lever.

**CAUTION** Always bring your Golden Eagle to a full stop before changing direction from forward to reverse, or from reverse to forward.

### To drive in reverse use either of the following:

- Use your left hand fingers to pull back on the left side of the throttle control lever.
- Use your right thumb to push the right side of the throttle control lever.

When the throttle control lever is completely released, it automatically returns to the center “stop” position and engages your scooter’s brakes, bringing you to a complete stop. You will hear a “click” when the park brake engages.

### Control Options

Golden Technologies, Inc. has made provision for the individual needs and abilities of the operators of the Golden Eagle.

Your authorized Golden Technologies, Inc. provider can reverse the throttle control lever controls so that when you pull on the left side of the lever, your scooter will move in the forward direction, and when you pull on the right side of the lever your scooter will move in the reverse direction.

### DELTA TILLER ADJUSTMENT

The tiller on your Golden Eagle scooter employs a handle to provide you with infinite tiller angle settings. To set the tiller to your liking, follow these directions.

1. Use one hand to grasp the tiller handle.
2. Use your other hand to grasp and push up the tiller adjustment lever.
3. Move the tiller forward or back into your desired position.
4. Release the adjustment lever to lock the tiller in place.

## V. OPERATION

### SEATING

#### Flip-up Armrests

Pull up on the end of either armrest to flip it up for easy transfer on or off your Golden Eagle. See figure 8.



**WARNING** Do not push with excess force on the arm or use the arm rest as a aide to support your weight while trying to transfer out of the scooter.

#### Armrest Angle

To increase the armrest angle, turn the armrest angle screw clockwise.

To decrease the armrest angle, turn the armrest angle screw counterclockwise.

#### Headrest Height

Press the button in to adjust the height of the headrest.

#### Backrest Angle

Lift the handle on the left-side of the seat to adjust the angle of the seat back.

*Note: The backrest can be folded down to minimize chair height during transport.*



**WARNING** Lifting the backrest angle handle will cause the seat back to quickly fold down. Make sure your are clear of the seat back or hold the seat back with your opposite hand while making the seat back angle adjustment.

#### Seat Slide Lever

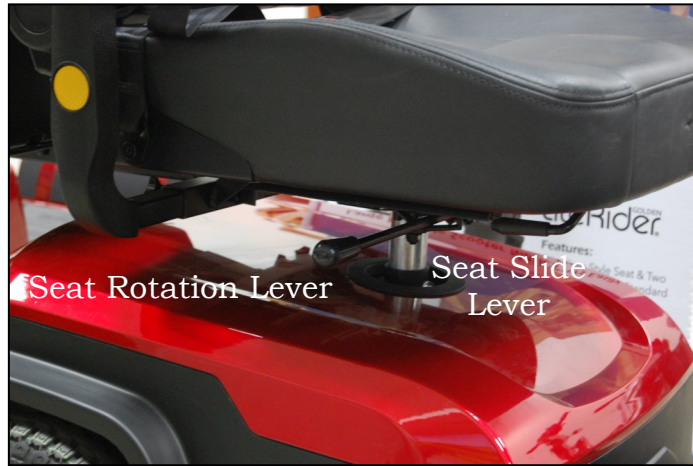
- 1.Lift the lever and while holding the lever slide the seat to a comfortable position.
- 2.Release the lever to lock the seat in place.

*Note: The lever is located on the right-side of the seat towards the front of the seat.*



**Figure 8. Seating Comfort Adjustments**

## V. OPERATION



**Figure 9: Seat Rotation Adjustment**

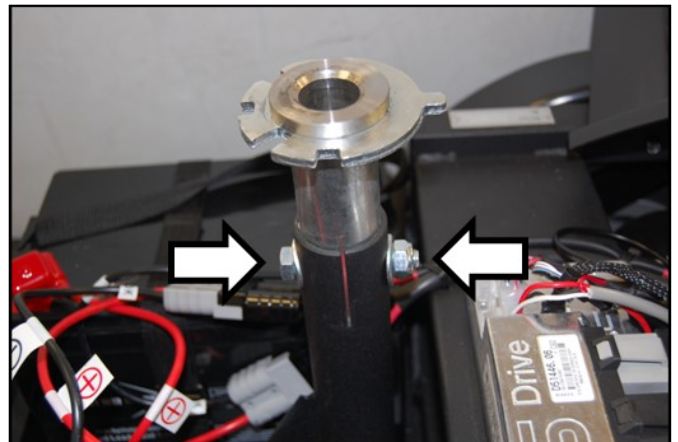
### Seat Rotation Lever

The seat can be rotated through 360° and locked at any 45° position.

1. Push forward on the seat rotation lever and rotate the seat to the desired position. See figure 9.
2. Release the handle to lock the seat at any 45° position.



**Figure 10**



**Figure 11: Seat Post Nut and Bolt**

### Seat Height Adjustment

To adjust the seat height:

1. Fold the seat back down, grip the seat on opposite sides and, with a firm grip; pull the seat straight up and off of the seat pedestal. See Figure 10.
2. Remove the nut and bolt that holds the seat post in the seat pedestal. See Figure 11.
3. Position the seat post at the desired height while aligning the holes in the seat post and the seat pedestal.
4. Reinstall the nut and bolt.
5. Place the seat back onto the seat post, and push down to lock the seat.



**WARNING**

**Make sure the seat is securely locked into place before operating the scooter.**

## V. OPERATION



WARNING

**Never sit on your Golden Eagle in freewheel mode.**



WARNING

**Eagle.**

**Never disengage the park brake while you are operating your Golden**

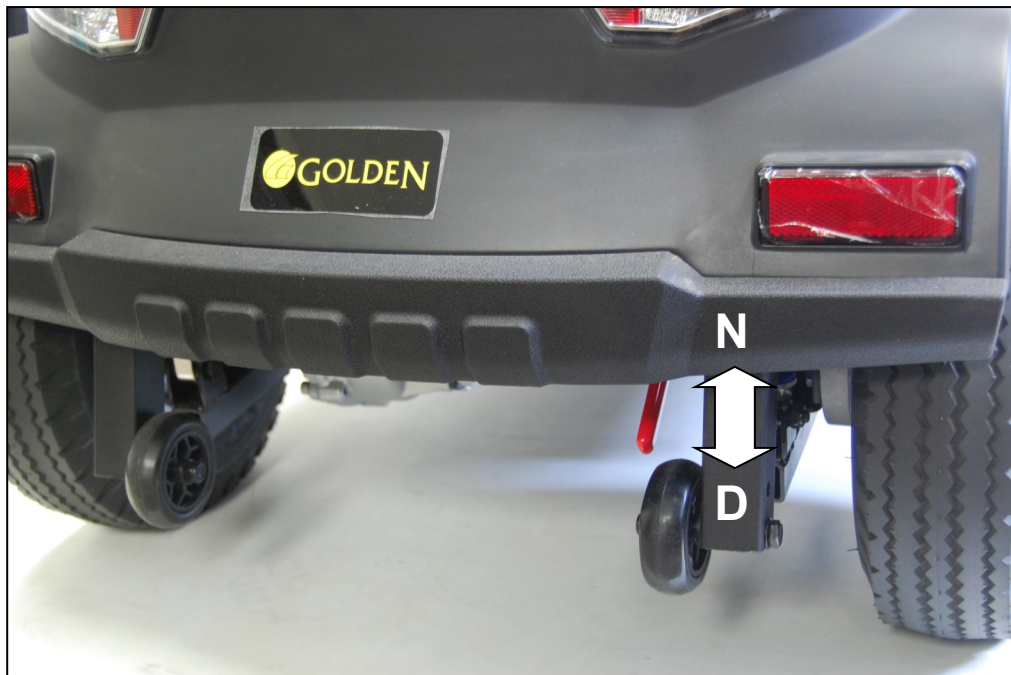


WARNING

**Always make certain that your scooter park brake is engaged before inserting the key into the key switch and turning it to the on position.**

### **FREEWHEEL MODE**

Your Golden Eagle is equipped with a freewheel lever that can set your scooter in or out of freewheel mode.



**Figure 12: Freewheel Lever**

To disengage the park brake and put your scooter in freewheel mode:  
Pull the freewheel lever up towards the letter N (Neutral Position). See figure 12.

To engage the brake and take your scooter out of freewheel mode:  
Push the freewheel lever down towards the letter D (Drive Position). See figure 12.

### **NOTICE**

Pushing the scooter too quickly in freewheel will cause the motor to act as a generator causing the scooter to become difficult to push. Freewheel slowly.

# VI. RIDING YOUR GOLDEN EAGLE

## MOUNTING



For your first driving session, make certain that your Golden Eagle starts out on a level surface and that you will continue driving on a level surface.

### BEFORE GETTING ON YOUR GOLDEN EAGLE

1. Check to be certain that the key has been removed from the key switch. See section V. "Operation" in this manual. This will eliminate the possibility of accidentally activating the paddle controls and causing injury to yourself and/or others.
2. Check to be certain that your Golden Eagle freewheel lever is in the engaged position. See section V. "Operation" in this manual.
3. Flip up or remove the armrest(s).



**WARNING**

**When getting on or off your Golden Eagle, keep your weight toward the middle of the deck. Putting most or all of your weight on the edge of the deck may cause an unstable condition.**

### GETTING ON YOUR GOLDEN EAGLE

1. Position the seat for safe and easy mounting. Ensure that the seat is facing forward. See Section V. "Operation."
2. Return tiller to full upright position if necessary.
3. Carefully place one foot on the approximate center of the deck and seat yourself comfortably and securely on the seat.
4. Flip down or replace the armrest(s).
5. Place the key into the key switch. See figure 6 on page 16.
6. Rotate the key clockwise to the on position.

## VI. RIDING YOUR GOLDEN EAGLE

### BASIC DRIVING

1. Make certain that you are seated safely and properly on your Golden Eagle.
  2. Turn the speed control dial fully counterclockwise to its slowest setting.
  3. Insert the key into the key switch—if you have not already done so.
  4. Turn the key clockwise to the “On” position.
  5. Place your hands on the handgrips.
- If you wish to drive forward, pull back on the right side of the throttle control lever (or push the left side of the throttle control lever forward.)
  - If you wish to drive in reverse, pull back the left side of the throttle control lever (or push the right side of the throttle control lever forward.)
6. Pull on the throttle control lever to gently accelerate your Golden Eagle.
  7. Release the throttle control lever to allow your Golden Eagle to come gently to a full stop.
  8. Practice these two basic functions until you feel that you have control of your scooter.

### Steering

Steering your Golden Eagle is easy and logical.

1. With both hands on the handgrips of the tiller (see figure 4 on page 13), turn the tiller to the right to travel to the right.
2. With both hands on the handgrips of the tiller (see figure 4 on page 13), turn the tiller to the left to travel to the left.
3. Make certain to maintain sufficient clearance when turning your scooter so that the rear wheels will clear any obstacle.



### WARNING

**Turning your scooter too sharply at too high a speed may create a situation where one of the wheels will leave the ground. This may increase the possibility of tipping the scooter. Avoid this danger at all times by decelerating and steering a wide arc around corners and obstacles.**

## VI. RIDING YOUR GOLDEN EAGLE

### Steering in a Tight Spot

If you must steer in a tight spot, such as entering a doorway or when turning around:

1. Bring your Golden Eagle to a full stop.
2. Set speed at the lowest setting.
3. Turn the tiller to the direction in which you wish to drive.

For more information on dealing with obstacle and tight spots, see “Control Through Tight Spots” on the next page.

### Steering in Reverse

Backing up your Golden Eagle requires attention to what you are doing.

1. Use your right fingers to push the throttle control lever or use your left fingers to pull back on the throttle control lever. See figure 5 on page 16.
2. Turn the tiller to the left to drive in reverse to the left.
3. Turn the tiller to the right to drive in reverse to the right.

### **NOTICE**

Your Golden Eagle’s speed in reverse is fifty percent of the forward speed set at the speed control dial.



**WARNING**

**Prevent injury! Do not drive down an incline in reverse.**

## VI. RIDING YOUR GOLDEN EAGLE

### CONTROL THROUGH TIGHT SPOTS

As you use your Golden Eagle to greatly increase your mobility, you will undoubtedly encounter some obstacles that will require practice to negotiate smoothly and safely. Below are some common obstacles that you may meet during the daily use of your scooter. Listed with those obstacles are some driving tips that should help you conquer those obstacles. Learn and follow those tips, and with surprising ease you will soon be in control of your Golden Eagle as you maneuver it through doors, up and down ramps, up and over curbs, through grass and gravel, and up and down inclines.

### Ramps

#### When proceeding up any ramp, curb, or incline:

- Lean forward in your seat to move your center of gravity forward for maximum stability and safety. If the ramp has a switchback, good cornering ability is required.
- Maneuver your Golden Eagle so that the front wheels take wide swings around the corners of the ramp.
- Doing this will allow your scooter's back wheels to follow a wide arc around the corner, staying clear of obstacles.

#### If you must stop your Golden Eagle while driving up a ramp:

- Starting up again simply requires that you apply gentle and steady forward power pressure to the throttle control lever.
- Accelerate gently after stopping on any incline.

#### Driving down a ramp:

- Keep your Golden Eagle's speed control dial set fully counterclockwise at the slowest speed setting.
- If you must come to a stop, release the throttle control lever slowly and smoothly.



WARNING

**Prevent injury! Do not drive down an incline in reverse.**

### Curbs

- See specifications for maximum curb height.
- Always use caution when negotiating any curb.
- Go up or down a curb head on at a direct 90° angle.
- Approach and negotiate the curb so that both back wheels of your scooter go over the curb at the same time.
- Never negotiate inclines or curbs by traversing them. Doing so may cause the scooter to tip over.
- Go down a curb slowly to avoid a jarring bump. Use as little power as possible.

### Grass and Gravel

Your Golden Eagle performs admirably on grass, gravel, and hills, but you must follow the operational parameters presented in this manual. Refer to the "Safety" section. If you are unsure about any situation, avoid it. Common sense is your best protection.

- Feel free to use your Golden Eagle on lawns or in park areas.
- Avoid long or high grass, which may wrap around your scooter's axles.
- Avoid loose gravel.



## VII. DISASSEMBLY

### DISASSEMBLY

When disassembling your scooter, please be sure to follow these simple instructions.

#### Remove the Seat

1. Place your scooter on a level surface.



WARNING

**Remove the key from the key switch before you begin to disassemble your Golden Eagle.**



WARNING

**Never pull on the arms or use them as a handle to move the scooter as they could inadvertently fold causing injury.**

2. Fold the seat back down, grip the seat on opposite sides and, with a firm grip; pull the seat straight up and off of the seat pedestal. See figure 13.



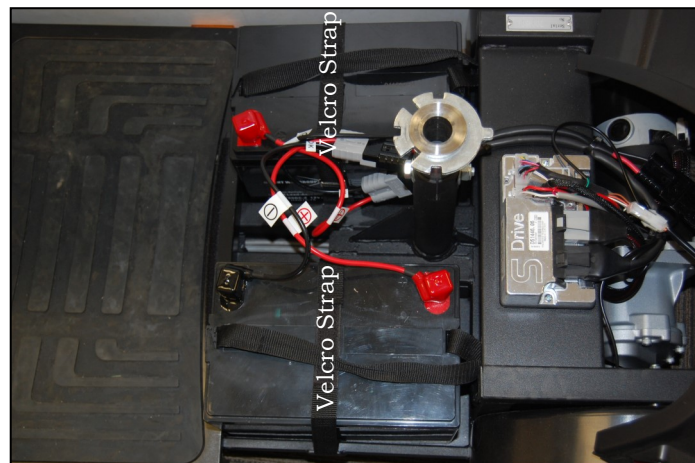
**Figure 13. Removing the Seat**

#### Remove the Batteries

4. Remove the battery cover by lifting the cover up. See figure 14.

5. Remove the Velcro strap from each battery, and then unplug the batteries from the scooter.

6. Lift the batteries (2) out of the scooter.



## VII. DISASSEMBLY

### Remove the Tiller Basket

7. Remove the tiller basket by pulling up.

### Fold Down and Lock the Tiller

8. Use one hand to grasp the tiller handle. Use your other hand to push up on the tiller adjustment lever. Move the tiller downward. Release the adjustment lever to lock the tiller in place. See figure 15.



**WARNING**

**The Golden Eagle scooter weighs approximately 152 lbs. with the seat, batteries, and tiller basket removed. Exercise good judgment when moving or lifting the scooter.**



**WARNING!** Be aware of labeled pinch-points! Be careful not to pinch your fingers between moving or removable parts during the disassembly of your scooter. Your full attention is required!



**Tiller Handle**



**Figure 15. Lowered Tiller**

## VIII. ASSEMBLY



**WARNING!** Be aware of any possible pinch-points! Please note warning labels at pinch-points during assembly.



**WARNING!** Pinching and crushing hazard! Increased hazards due to pinching or crushing result due to the component weight (such as batteries) during preparation for transport and maintenance work. Always carry out any work to be done with great care. Always try to get help from a second person, especially when stowing parts for transport.



**WARNING! Pinch Point:** A pinch point is an area where you **MUST** consider your fingers to be sure they **DO NOT** become pinched between two metal or hard plastic areas. The greatest chance of pinch points becomes possible during the assembly of the Golden Eagle scooter.



**WARNING**

### **INJURY HAZARD DUE TO IMPROPER ASSEMBLY!**

Ensure that all components in the scooter have been correctly assembled. During assembly, please check that all connecting/locking devices are holding in place.



**Figure 16. Golden Eagle Components (Model GR595)**

## VIII. ASSEMBLY

### Install the Batteries

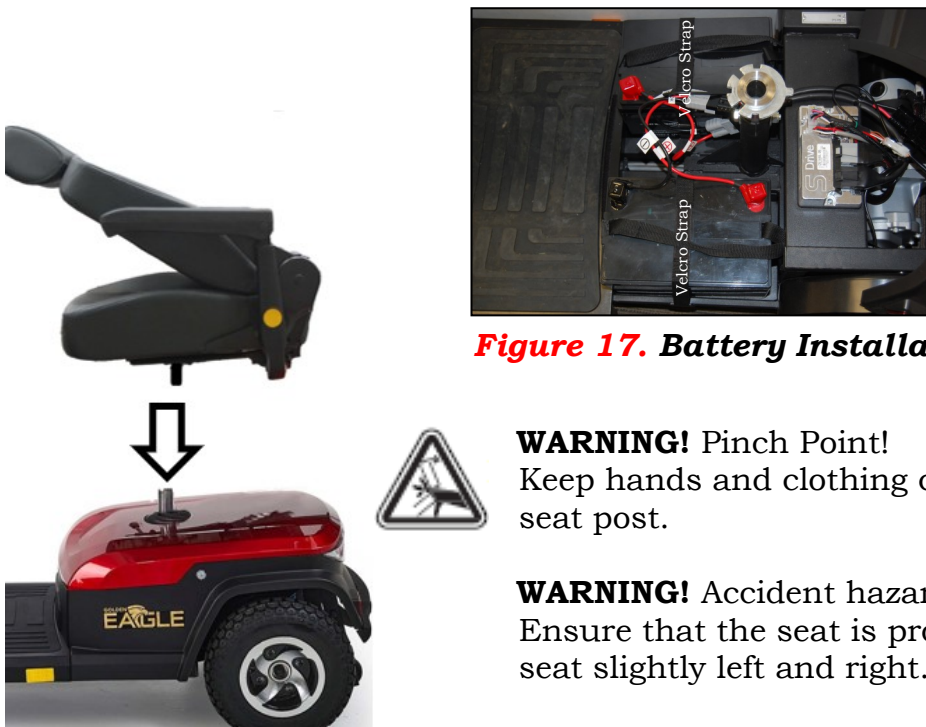
1. Gently lower the batteries (2) into the battery compartment, and secure each battery down with a Velcro strap. See figure 17.
2. Plug the battery cables (2) into their matching color coded connectors on the scooter.

### Install the Battery Cover

3. Place the battery cover over the batteries and secure in place.

### Install the Seat

4. Hold the seat on an angle so you can see the seat swivel post underneath.
5. Place the seat swivel post into the seat receiver post as shown in figure 18.
6. Push down on the seat to lock the seat in place. Move the seat from side to side to make sure it is locked in place.



**Figure 17. Battery Installation**

#### **WARNING!** Pinch Point!

Keep hands and clothing clear of the seat swivel post and seat post.

#### **WARNING!** Accident hazard due to non-engaged seat!

Ensure that the seat is properly engaged by turning the seat slightly left and right.

**Figure 18. Installing the Seat**

### Unlock the Tiller

7. Use one hand to grasp the tiller handle. Use your other hand to grasp and push up the tiller adjustment lever. Move the tiller into your desired position. Release the adjustment lever to lock the tiller in place. See figure 15 on page 26.

### Install the Tiller Basket

8. Place the basket onto the tiller bracket and push down to lock it in place.



**WARNING**

**Accident hazard due to incorrect seat position!** Always turn the seat to face forwards and engage it before driving. If the seat is in any other position, the possibility of tipping is increased. Before turning the seat, always ensure that the scooter is on an even and solid surface.

## IX. TRANSPORTING YOUR GOLDEN EAGLE



**Golden Eagle**

### **NOTICE**

The Golden Eagle can be equipped with a docking device for loading onto a vehicle by means of a mechanical lift or hoist. Contact your Golden Technologies, Inc. provider for more information concerning docking devices and scooter lift devices.

#### **To Transport Your Golden Eagle:**

- Disassemble or fold down the seat and tiller (see section VII. “Disassembly”) as close as possible to the loading area of the vehicle to be used for transporting your scooter.
- The degree to which you disassemble your Golden Eagle or fold the seat and tiller depends on the size and shape of the cargo area of the transporting vehicle.
- Moving blankets or other forms of padding may be used to protect your Golden Eagle during transportation.

### **CAUTION**

- **Do not** lift your Golden Eagle by its plastic body parts. Breakage of these parts is not covered by the warranty.
- **Do not** use the tires or wheels to lift the rear carriage. The carriage may rotate and cause injury or damage.



WARNING

**If your scooter and its components are not properly and securely stowed during transportation, the scooter or the components may move or become airborne and cause injury or damage.**



WARNING

**Never sit on your Golden Eagle when it is being transported. Always fasten down your Golden Eagle securely with an approved tie-down system while transporting your scooter.**



WARNING

**If transporting your Golden Eagle on an outside lift, remove the seat or make sure the seat is fasten down securely with an approved tie-down system supplied by your lift manufacturer while transporting your scooter. Failure to do so could result in the seat coming loose and becoming airborne. This situation could cause problems for the traffic behind you and possibly result in an injury.**

## X. CARE AND MAINTENANCE

### ROUTINE MAINTENANCE

Your scooter requires a minimal amount of care and maintenance. If you do not feel confident in your ability to perform the maintenance listed below, you can schedule an inspection and maintenance with your provider.

- ✓ Make sure your batteries are fully charged daily. See “Battery Charging”.
- ✓ Regularly inspect your scooter’s tires for signs of wear.
- ✓ Regularly inspect all exposed harnessing and connections for wear, damage, and corrosion. Have your provider repair or replace any damaged harness or connector.
- ✓ Periodically check all fasteners for tightness, wear, and corrosion. If any of these are present, turn off the scooter and contact your provider.



**WARNING**

**Be careful of pinch points and sharp metal parts (wear gloves).**

- ✓ Keep all the electrical components (charger, console panel, and electronics) free from moisture. If any of these items do become exposed to moisture, let them dry thoroughly before attempting to operate your scooter again.
- ✓ All bearings are permanently lubricated and sealed. No additional lubrication is required.

### CLEANING YOUR GOLDEN EAGLE

#### Tires

- Clean the tires with ordinary kitchen-type cleaners and a damp cloth.
- Do not use solvents on the tires. Solvents can cause the tire material to break down or become too soft.
- Never use silicone tire products on tires as it may cause tire slippage.
- Check tire pressure every 3 weeks.

**Note:** For the proper tire pressure and inflation procedure, see page 33.

#### Body

The body shrouds of your scooter are formed ABS plastic and are painted for style and durability.

**NOTICE** Do not use excess water or pressure when cleaning your scooter.

- **Never** take your scooter through a car wash.
- **Never** use a high pressure hose to wash your scooter.
- Use cool water mixed with a mild soap to remove dirt and oils. Clean the body of your scooter with a damp cloth. Dry with a clean soft cloth. Buff by hand with a soft cloth.
- **Do not** use a sharp object when removing shroud pieces.

#### Vinyl Seat

Clean with a mild soap or mild detergent and a damp cloth. A vinyl cleaner may also be used.

#### Rubber Floor Mat

The rubber floor mat snaps into place on the scooter floor. Simply pull up on the mat to remove it.

- Clean the floor mat with ordinary kitchen-type cleaners and a damp cloth.
- Do not use solvents on the floor mat. Solvents can cause the material to break down.

**CAUTION** Never use silicone products as they may cause slippage.

## X. CARE AND MAINTENANCE

**IMPORTANT!** New batteries **MUST** be fully charged prior to the initial use of your scooter. **Charge new batteries for 12 hours even if the battery gauge already shows a full charge. This is to condition your new batteries for maximum performance.**



**WARNING!** Corrosive chemicals contained inside the battery.  
Explosive battery conditions exist.



**WARNING!** Charger surface can become HOT.  
Electrical hazard!

### BATTERIES AND CHARGING

Battery maintenance is the most important part of maintaining your scooter. Keeping the batteries fully charged helps to extend battery life. Use the following guidelines to help keep your batteries in optimum condition.

- For daily use, keep batteries fully charged. We recommend that you plug in the off-board charger after each use and charge 6-8 hours.

**“For best results please charge your batteries overnight after every use.”**

- If you are not going to use the scooter for more than a week, **fully charge** the batteries and then disconnect them from the scooter. See figure 14 on page 25.

### Charging Guidelines Checklist to Maximize Battery Life

- ✓ Use only the automatic off-board charger supplied for all routine charging.
- ✓ Never use an automotive or wet type charger.
- ✓ Avoid deep discharges and never drain the batteries completely.
- ✓ Do not leave batteries in a low state of charge for extended periods. Charge a discharged battery as soon as possible.
- ✓ Fully recharge batteries regularly.
- ✓ Always store batteries fully charged.
- ✓ Check stored batteries once a month and recharge as necessary.

### To Charge the Batteries:

The charger for all Golden Eagle models is an off-board charger. To charge the batteries, lift the cover and plug the charger into the charger port on the tiller. See figure 19.

When the batteries are fully charged, disconnect the charger power cord from the wall outlet and from the charging socket.



**Figure 19. Battery Charging**

**NOTICE** Your scooter will not move while the charger remains connected.



### Battery Maintenance

**MANDATORY!** Use only AGM or GEL-cell SLA deep-cycle batteries for operating Golden Eagle scooters.

- These batteries are maintenance free.
- There is no danger of spillage or leakage, so these batteries are safely transportable on aircraft, busses, trains, etc.
- By following the procedures set out in this manual, you can expect extended life from your Golden Eagle's batteries.

## X. CARE AND MAINTENANCE

### IF YOUR Golden Eagle DOES NOT OPERATE

- Make certain the freewheel lever is set to the engaged position. See page 20.
- Check the main circuit breaker. If necessary, reset the circuit breaker. See figure 20.
- Make certain that the speed adjustment dial is at the desired setting.
- Make certain that the key switch is set to the “On” position.

If none of the above procedures solve the problem, contact your authorized Golden Technologies, Inc. provider.

### MAIN CIRCUIT BREAKER

The main circuit breaker reset button is located on the left-side of the rear shroud just in front of the rear wheel. See figure 20.



**WARNING!** Do not attempt electrical repairs.

Consult Golden Technologies, Inc. or your authorized Golden Technologies, Inc. provider. If, for no apparent reason, your Golden Eagle stops operating, the main circuit breaker may have tripped.

### Possible causes for the main circuit breaker to trip:

- Driving up a long, steep hill.
- Driving over a curb.
- Low tire pressure. See proper tire inflation on page 33.
- Run-down batteries.

As you operate your Golden Eagle, battery voltages go down and battery current must rise to satisfy the demands of the motor and of other electrical devices operating on your scooter. This can cause a heavy current draw that will trip the main circuit breaker.

### Remedy:

- Recharge your Golden Eagle’s batteries. See “Batteries and Charging” on page 31.
- If the problem continues, have your authorized Golden Technologies, Inc. provider load test the batteries.
- If the batteries are good, the charger may be the problem. Consult your authorized Golden Technologies, Inc. provider.

### Resetting the Main Circuit Breaker

1. If the main circuit breaker trips as a result of run-down batteries or because of a temporary overload, reset the circuit breaker:
2. Wait ten minutes or so for the motor control board to return to the normal operating temperature range.
3. Make certain that the key switch is set to the “Off” position.
4. Press in on the main circuit breaker reset button. See figure 20.

### NOTICE

If the main circuit breaker continues to trip, there is probably an underlying electrical fault that needs attention.

- Contact your authorized Golden Technologies, Inc. provider.
- Do not keep resetting the main circuit breaker without correcting the underlying electrical problem.



**Figure 20. Circuit Breaker**



# X. CARE AND MAINTENANCE

## PROPER TIRE INFLATION



**WARNING** Golden Technologies, Inc. does not recommend that you disassemble the tire from the split rim wheels. Consult your authorized Golden provider for assistance with this matter. If you must disassemble a pneumatic tire from the split rim, the tire must be completely deflated. If the tire is not completely deflated, serious injury may occur.

### NOTICE

Under-inflated tires will cause significant loss of operational range and will also cause the motor control board to overheat.

#### To inflate a tire:

1. Remove the valve stem cap by turning it counter-clockwise.
2. Inflate the tire to 35 psi.
3. Replace and turn the valve stem cap clockwise to secure it.
4. Repeat steps 1-3 for each tire.



**WARNING** Do not exceed the maximum tire pressure recommended by the tire manufacturer .

## DIAGNOSTICS

The diagnostics feature of your Golden Eagle microprocessor based motor control board functions as follows:

- Any fault condition with the controller or with an associated system will cause the scooter to flash and display an error code.
- The number of ECU flashes in each series, and the associated E-CODE displayed on the LCD display is referred to as the error code.
- The error code indicates the nature of the condition or fault.

## FAULT CODES (ECU Codes)

The S-Drive controller uses flashes and an error code to indicate the status of the system. When the controller notices that there is a malfunction in the system, it will flash an ECU code and display an E-code when the power is on. The signal will be a set of flashes with a two seconds delay between ECU codes. The slower diagnostic pattern will then be sounded once. For example, when it flashes five times and stops, that indicates E-code #5 – Brake Trip.

#### The following ECU codes are used to help diagnose system errors:

- FLASH Code #2 – Low Battery Voltage
- FLASH Code #3 – High Battery Voltage
- FLASH Code #5 – Solenoid Brake Trip
- FLASH Code #6 – Throttle Trip
- FLASH Code #7 – Speed Volume Problem
- FLASH Code #8 – Motor Disconnected
- FLASH Code #9 – Possible Controller Trip

## **X. CARE AND MAINTENANCE**

### **BEEP CODE #2 – LOW BATTERY VOLTAGE**

The battery needs charging or there is a bad connection to the battery. Check the connections to the battery. If the connections are good, try charging the battery.

### **BEEP CODE #3 - HIGH BATTERY VOLTAGE**

An excessive voltage has been applied to the S-drive. This is usually caused by a poor battery connection. Check the battery connections. *NOTE: The error may only be present when going down hill and power goes back to the batteries.*

### **BEEP CODE #5 – SOLENOID BRAKE TRIP**

The parking brake has a bad connection. Check the parking brake and motor connections. Make sure all the system connections are secure.

### **BEEP CODE #6 – THROTTLE TRIP (OUT OF NEUTRAL)**

A throttle trip is indicated. Make sure the throttle is in the neutral position before switching on the scooter.

### **BEEP CODE #7 – THROTTLE TRIP/SPEED CONTROL FAULT (VOLTAGE ERROR).**

A throttle trip is indicated. Indicates a problem with the throttle control or speed control.

### **BEEP CODE #8 - MOTOR DISCONNECTED**

The motor has a bad connection. Check all the connections and leads between the motor and the S-drive. Check the position of the freewheel switch.

### **BEEP CODE #9 – POSSIBLE CONTROLLER TRIP**

A control system trip is indicated. Make sure all connections are secure. Check to make sure each tire is properly inflated. See “Proper Tire Inflation” on page 33.

## **NOTICE**

FOR YOUR CONVENIENCE, THESE DIAGNOSTIC FLASH AND E-CODES ALONG WITH THE SERIAL NUMBER OF YOUR SCOOTER CAN BE FOUND UNDER THE FLOOR MAT. THIS WILL ALLOW YOU TO ACCESS THIS IMPORTANT SERVICE INFORMATION AT ANY TIME. IF POSSIBLE, PLEASE REFER TO THIS INFORMATION BEFORE CONTACTING YOUR AUTHORIZED GOLDEN TECHNOLOGIES, INC. PROVIDER.

# XI. WARRANTY



## Consumer Limited Warranty *Scooters*

Golden Technologies has provided information throughout the owner's manual in regards to proper usage and care of your scooter. Failure to adhere to this information will void the warranty of the scooter, it's parts and the batteries supplied by Golden Technologies.

The following warranty is granted only to the INITIAL Consumer who has purchased our product and commences on the Date of Purchase by the Consumer from an Authorized Golden Technologies' Provider. The Consumer must have a warranty registration card filed with Golden Technologies to receive service.

The warranty covers the following scooter models unless otherwise noted:

- ◆ BUZZaround LT: GB107
- ◆ BUZZaround XL Series:  
GB117D, GB117S, GB117H, GB117Z  
GB147D, GB147S, GB147H, GB147Z
- ◆ BUZZaround Extreme:  
GB118, GB148
- ◆ BUZZaround Luxury:  
GB119, GB149
- ◆ LiteRider Series:  
GL109, GL111, GL141
- ◆ All Companion Models:  
GC240, GC340, GC440
- ◆ Avenger: GA541
- ◆ Patriot: GR575
- ◆ Golden Eagle: GR595

### ***Lifetime Limited Warranty:***

For the life of the scooter, from the date of purchase from an authorized Golden Technologies' dealer, in the event of defective materials or workmanship, Golden Technologies will repair or replace at our option any of the following structural frame components found to be defective by an authorized Golden Technologies representative:

- ◆ Steel Frame
- ◆ Frame Welds
- ◆ Tiller Frame
- ◆ Front Fork
- ◆ Seat Post

***\*The GR595 is warranted for FIVE YEARS***

### ***Two-Year Warranty:***

For the period of two years from the date of purchase, in the event of defective materials or workmanship, Golden Technologies will repair or replace at our option with any new or reconditioned components any of the following drive train components found to be defective by an authorized Golden Technologies representative:

- ◆ Transaxle
- ◆ Motor/Brake Assembly (electrical function only)

**Note: An increase in operating noise of the transaxle DOES NOT constitute a defect. With normal wear and tear, operating noise is expected to increase.**

For the period of two years from the date of purchase, in the event of defective materials or workmanship, Golden Technologies will repair or replace at our option any of the following electronic assemblies found to be defective by an authorized Golden Technologies representative:

- ◆ Electronic Controller
- ◆ Battery Charger
- ◆ Dash Assembly
- ◆ Potentiometer Assembly
- ◆ Wire Harness(es)

**Note: While charging batteries, it is normal for the battery charger to heat up. Heat coming from the battery charger does not constitute a defect.**

### ***One-Year Limited Warranty***

For the period of one year from the date of purchase, in the event of defective materials or workmanship, Golden Technologies will replace the **batteries supplied by Golden Technologies** if found to be defective by an authorized Golden Technologies representative.

# XI. WARRANTY



## Consumer Limited Warranty *Scooters (continued)*

### ***One-Year Limited Warranty:***

For the period of one year from the date of purchase, in the event of defective materials or workmanship, Golden Technologies will repair or replace at our option any of the following parts found to be defective by an authorized Golden Technologies representative:

- ◆ Bearings
- ◆ Bushings
- ◆ Seat Swivel Mechanism
- ◆ Rubber Components (excludes tires)
- ◆ Armrests
- ◆ Plastic Components (excludes body)

Items not listed are covered at the discretion of Golden Technologies. Any accessories, standard or optional, supplied by Golden Technologies, are covered for a period of one year from the date of purchase with the particular unit.

### ***Warranty Exclusions:***

Golden Technologies does not provide warranty on any of the following items which may require replacement due to the normal wear and tear of day to day usage:

- ◆ Tires and Tubes
- ◆ ABS Plastic Shrouds
- ◆ Armrest Pads
- ◆ Motor Brushes
- ◆ Bulbs/Fuses
- ◆ Brake Pads
- ◆ Upholstery

This warranty also excludes the following:

- ◆ Loss or theft of components (ie: keys, baskets, etc.)
- ◆ Damage caused by:
  - Battery fluid spillage or leakage
  - Abuse, misuse, accident or negligence.
  - Improper operation, maintenance or storage.
  - Commercial use or use other than normal.
  - Repairs and/or modifications made to any part without the specific consent of Golden Technologies.
  - Exceeding the specified weight capacity of the unit.
  - Accessories other than those supplied or approved by Golden Technologies.
  - Failure to adhere to the product instructions
  - Acts of Nature, such as lightning strikes, earthquakes, etc.....
  - Circumstances beyond the control of Golden Technologies.

### **◆ ANY PARTS ALTERED OR REPAIRED BY UNAUTHORIZED PERSON.**

### ***Warranty Service:***

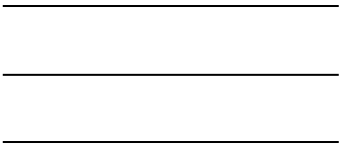
Warranty Service must be performed by an authorized Golden Technologies representative. Golden Technologies reserves the right to replace warranted part(s) with refurbished or new part(s) at our discretion. All labor charges, service calls, transportation costs or any other charge(s) associated with the installation of any warranted part(s) are the responsibility of the consumer. Warranty is for the replacement of the parts only and does not include freight for the replacement parts. Consumers are not to return any item(s) to Golden Technologies without prior written authorization. Any damages incurred while warranted part(s) are in transport are the sole responsibility of the consumer.

**There is no other express warranty.**

Implied warranties, including those of merchantability and fitness for a particular purpose are excluded. Liabilities for consequential damages are excluded. This warranty gives you specific rights and you may also have other rights which may vary from state to state.



Fold Here First



Place  
Stamp  
Here

Golden Technologies  
401 Bridge Street  
Old Forge, PA 18518



Fold Here Second



# GOLDEN EAGLE



**Model GR595**



401 Bridge Street  
Old Forge, PA 18518  
Tel: 800-624-6374  
Fax: 800-628-5165  
[www.goldentech.com](http://www.goldentech.com)