



YEARS OF



**2018** PRODUCT CATALOG

# Dear Friends,

**25 years** *may seem like a long time, but it feels like just yesterday when we were unloading containers, hand-writing our shipping labels and waiting for our phone to ring.*



*Perhaps it feels that way because **we have been in the trenches** of every day and every part of NOVA. Perhaps it feels like yesterday because some things have remained exactly the same ... Ron and I are still best work and life friends, the ownership is the same, we have many of the same people. Most importantly, **we've been guided by Joy**, every day and every step of the way.*

**We are a company of People** *who are caring, fun, hard working, exceptional, talented, love food, love each other and **CHOOSE joy** and NOVA as their life purpose and work family.*



# A LETTER FROM SUE



***We are a company with Partners** who are passionate about helping others and transforming lives.*



*We are the disruptors in a broken industry and **CHOOSE joy** in their present and future.*

## ***We are a world with Customers***

*who are courageous, determined, uniquely amazing and **CHOOSE joy** in their life ... regardless of challenges, obstacles and discrimination.*



*25 years has gifted us the powerful lens of gratitude and experience, and wings of conviction, determination and passion to continue our journey of Joy. **ONWARD!***

**- Sue Chen, Founder**

A handwritten signature in cursive script that reads "Sue Chen".

# Contents

*amazing*

EDUCATION & MARKETING ..... 6

*wow*

PLANOGRAMS & DISPLAYS ..... 10

*style*

CANES ..... 18

*independence*

WALKERS ..... 38

*individuality*

MOBILITY ACCESSORIES ..... 54

# TABLE OF CONTENTS

## *togetherness*

|                                      |    |
|--------------------------------------|----|
| TRANSPORT CHAIRS & WHEELCHAIRS ..... | 62 |
|--------------------------------------|----|

## *safety*

|                       |    |
|-----------------------|----|
| BATHROOM SAFETY ..... | 74 |
|-----------------------|----|

## *comfort*

|                |    |
|----------------|----|
| CUSHIONS ..... | 92 |
|----------------|----|

## *sleep*

|                        |     |
|------------------------|-----|
| PILLOWS & WEDGES ..... | 108 |
|------------------------|-----|

## *well-being*

|                 |     |
|-----------------|-----|
| LIFE AIDS ..... | 116 |
|-----------------|-----|

CHOOSE

*amazing*

Our Education and Marketing programs are **the best in the business**. NOVAlive!, our innovative online education platform, and our **vibrant and thoughtful** marketing materials make all the difference. Explore, execute ... and see the **amazing** results.



EDUCATION & MARKETING

“**NOVA takes the lead**, having **transformed** our overall customer shopping experience with a complete offering of must-haves, friendly retail packaging and creative sales tools ...



NOVA Education has provided a tremendous opportunity for our employees to become **highly valued educators** to better serve our customers' needs.

”

- Real NOVA Dealer



**NOVA!live** is our new interactive platform that brings you into the experience from the comfort of your desktop, laptop or any mobile device. This will be your channel for **Retail Education, Product Training, Specials and more!**

*"As CEO, Chief Education Officer, my job and passion is to educate you and your team on how to deliver the best experience, outcomes and solutions for your customers, and that's going to happen on NOVA!live."*

A handwritten signature in black ink, reading 'Sue Chen'.

Sue Chen  
Chief Education Officer

## Tune in Here!



[novajoy.live](http://novajoy.live)

NOVA!live! hosts all our great video exclusives - new products, new programs & more!



[education.novajoy.live](http://education.novajoy.live)

This **One Hour Product Education Session** is effective, educational, and, of course, fun! After watching the videos, but sure to take the Learning Quiz - we will be sending a personalized certificate to all who pass with 70% or higher!

# MARKETING MATERIALS

## Dealer & Consumer Brochures (Bundle of 10)

Rolling Walkers



Item # M008  
QTY \_\_\_\_\_  
(Bundles)

Transport Chairs & Wheelchairs



Item # M009  
QTY \_\_\_\_\_  
(Bundles)

Bathroom Safety



Item # M010  
QTY \_\_\_\_\_  
(Bundles)

The Knee Walker



Item # M035-B  
QTY \_\_\_\_\_  
(Bundles)

Cushions



Item # M030  
QTY \_\_\_\_\_  
(Bundles)

Fall Prevention



Item # M075  
QTY \_\_\_\_\_  
(Bundles)

## Floor Stickers (24" x 6.75")

Bathroom Floor Sticker



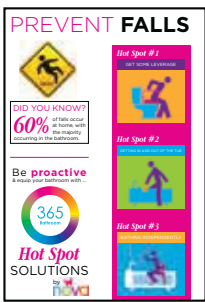
Item # M076 QTY \_\_\_\_\_

Mobility Floor Sticker

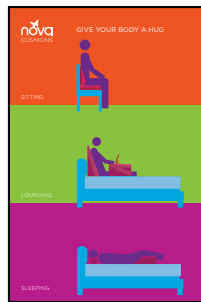


Item # M077 QTY \_\_\_\_\_

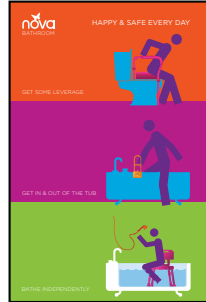
## Posters



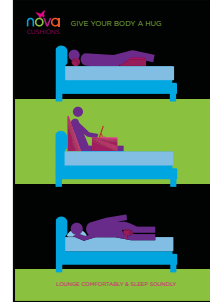
Item # M060  
24" x 36"  
QTY \_\_\_\_\_



Item # M061  
24" x 36"  
QTY \_\_\_\_\_



Item # M062  
24" x 36"  
QTY \_\_\_\_\_



Item # M063  
24" x 36"  
QTY \_\_\_\_\_

## Header Card (13.5" x 7")

Lose the Tennis Balls



Item # C117 QTY \_\_\_\_\_

## Banners (36" x 10")

Bathroom Banner



Item # M049  
QTY \_\_\_\_\_

Cushions Banner



Item # M047  
QTY \_\_\_\_\_

Mobility Banner



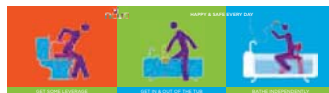
Item # M048  
QTY \_\_\_\_\_

Life Aids Banner



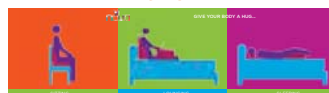
Item # M050  
QTY \_\_\_\_\_

Bathroom Infographic Banner



Item # M052 QTY \_\_\_\_\_

Cushions Infographic Banner



Item # M051 QTY \_\_\_\_\_

Mobility Infographic Banner



Item # M059 QTY \_\_\_\_\_

## Banners & Stands (24" x 63")



Zoom  
Item # M080  
QTY \_\_\_\_\_



Transport Chair  
Item # M082  
QTY \_\_\_\_\_



Bath Safety  
Item # M081  
QTY \_\_\_\_\_



CHOOSE

WOW

Your store layout and presentation makes all the difference. WOW your customers and increase your sales with our **Planograms and Displays**.



**TRY** Before You **BUY!** 



PLANOGRAMS & DISPLAYS

“ We had an *excellent experience* working with every representative at NOVA. The section has never looked so nice and the products are already *selling so well!* ”



The only regret is that we didn't do the NOVA Retail reset sooner (years sooner). *2018 successes, here we come!* ”

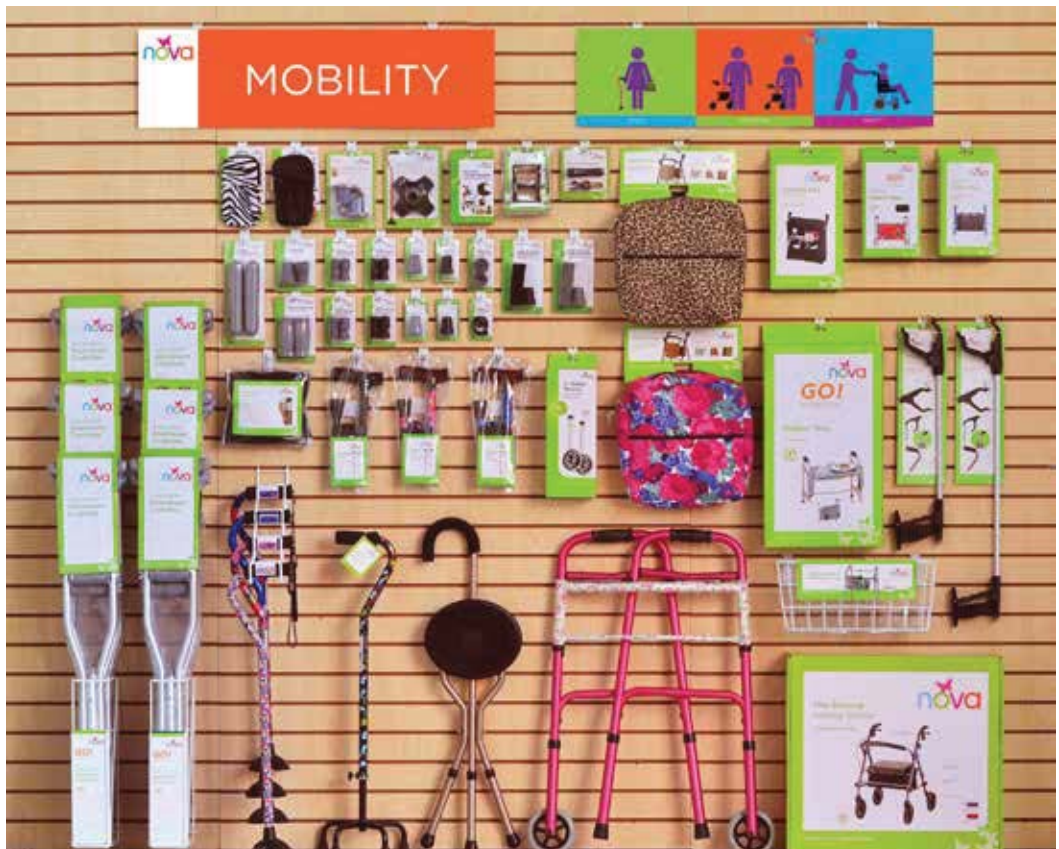
- Real NOVA Dealer

# PLANOGRAMS

**4 Ft. Mobility**  
Item # 1023



**8 Ft. Mobility**  
Item # 1020



Planogram & display contents may be changed/updated

## 4 Ft. Cushions Item # 1040



## 8 Ft. Cushions Item # 1049



Planogram & display contents may be changed/updated

# PLANOGRAMS

**4 Ft. Bathroom**  
Item # 1022



**8 Ft. Bathroom**  
Item # 1037



Planogram & display contents may be changed/updated

## 4 Ft. Life Aids

Item # 1025



Planogram & display contents may be changed/updated

# DISPLAYS

## SugarCane Display

SD1000

- Display is lightweight, portable and easy to assemble
- The display does the selling for you
- Generate turbo cash sales
- Comes complete with cardboard display and 10 SugarCanes (1 of each pattern print and 2 black)
- Dimensions:  
46”h x 22.5”w x 18.5”d



S1070BK  
Black



S1070LP  
Leopard Print



S1070PL  
Blue Waves



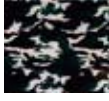
S1070MF  
Maui Flowers



S1070BS  
Butterfly Symphony



S1070PG  
Pink Garden



S1070CF  
Camouflage



S1070WN  
Walnut Grain



S1070HT  
Houndstooth

## SugarCane Display

With 4 Canes

- Display holds 4 SugarCanes
- Attaches to peg board or slat wall
- Comes with color swatches for easy reorder
- Dimensions: 15”d x 39”h x 6”w



Front



Side



## SC-4000



S1070BK  
Black



S1070BS  
Butterfly Symphony



S1070MF  
Maui Flowers

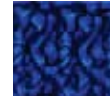


S1070PG  
Pink Garden

## SC-4001



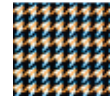
S1070BK  
Black



S1070PL  
Blue Waves



S1070CF  
Camouflage



S1070HT  
Houndstooth

## SC-4002



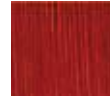
S1070BK  
Black



S1070MG  
Mahogany Swirl



S1070LP  
Leopard Print



S1070WN  
Walnut Grain

## BackJoy Display

Item # BKJ-DISPLAY



## Everyday Products Display

Item # 4300EDP



Side 1



Side 2



Planogram & display contents may be changed/updated

# CHOOSE *style*

Make canes a **style statement** for your store and your customers.



## CANES

“

The “Proud Peacock” *design is beautiful!* Besides being high-quality canes to assist with mobility, the design and finish on these canes are *excellent.*



Though I bought these for my mother, I am just as *happy* as she is!

”

- Real NOVA Fan

# Designer Aluminum Offset Canes

## FEATURES & SPECIFICATIONS

Lightweight aluminum  
Adjustable from 28"- 39"  
Soft foam handles  
Carrying strap  
Fade & chip resistant  
7/8" diameter  
Weighs 3/4 lb  
Approx. user height: 4'11" - 6'4"  
300 lb weight capacity  
Tip size: 10018



**1070BF**

Blue & Pink  
Flowers on  
Black



**1070BP**

Green Plaid



**1070CF**

Camouflage



**1070GP**

Paisley on  
Green



**1070HT**

Houndstooth



**1070LP**

Leopard  
Print



**1070MF**

Maui  
Flowers



**1070MG**

Mahogany Swirl



**1070PB**

Purple  
Bliss



**1070PC**

Purple  
Checkers



**1070PG**

Pink  
Garden



**1070PL**

Blue  
Waves



**1070RB**

Red Bliss

# Designer Aluminum Offset Canes



**1070CH**  
Blue Porcelain



**1070RS**  
Roses



**1070US**  
Stars & Stripes



**1070WN**  
Walnut Grain



**1070BS**  
Butterfly  
Symphony



**1070PP**  
Pink Petal  
Power



**1070PK\***  
Proud Peacock



**1070FP\***  
Flower Power



**1070LV**  
Viva Las Vegas



**2093\***  
Canterbury



**2091\***  
Celestial



**2094\***  
Butterflies



**3003\***  
Bingo Nights



**3004\***  
Casino Days

\* Adjustable from 30" - 39"

# Designer Aluminum T-Grip Canes

**FEATURES & SPECIFICATIONS**

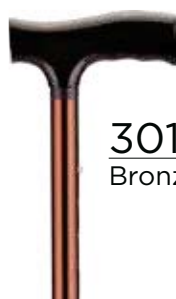
Lightweight aluminum  
Adjustable from 30" - 39"  
Ergonomic plastic handles  
Fade & chip resistant  
7/8" diameter  
Weighs 1 lb  
Approx. user height: 4'11" - 6'4"  
300 lb weight capacity  
Tip size: 10018



# Designer Aluminum Folding Canes

## FEATURES & SPECIFICATIONS

Lightweight aluminum  
 Wood Derby handles  
 Fade & chip resistant  
 7/8" diameter  
 Comes in a plastic bag  
 Weighs 1 lb  
 Approx. user height: 4'11" - 6'1"  
 300 lb weight capacity  
 Tip size: 10018



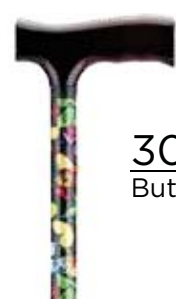
3010BR  
Bronze



3010BK  
Black



3015  
Leopard



3022  
Butterflies



3023  
Blue  
Waves



3024  
Maui  
Flowers



3026  
Camouflage



3033  
Mahogany  
Swirl



3034  
Walnut  
Grain



3036  
Pink  
Garden

## QT Canes

### Folding Canes with Mini Quad Cane Tips

QT Canes feature a Mini Quad Cane Tip, which improves stability and traction on uneven terrain, reduces impact on the user's hand and wrist and allows the cane to stand on its own on smooth and level surfaces. Its compact size makes it ideal for travel.



#### FEATURES & SPECIFICATIONS

- Lightweight aluminum
- Adjustable from 29.5" - 36.5"
- Ergonomic plastic handles
- Fade & chip resistant
- 7/8" diameter
- Weighs 1 lb
- Approx. user height: 4'11" - 6'1"
- 300 lb weight capacity
- Tip size: 10041BK Mini Quad Tip



**QT3010BK**  
Black



**QT3010BR**  
Bronze



**QT3015**  
Leopard



**QT3022**  
Butterflies



**QT3023**  
Blue Waves



**QT3024**  
Maui Flowers



**QT3026**  
Camouflage



**QT3027**  
Blue Porcelain



**QT3028**  
Butterfly  
Symphony



**QT3033**  
Mahogany Swirl



**QT3034**  
Walnut Grain



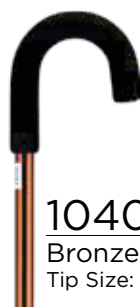
**QT3036**  
Pink Garden

# Aluminum Canes

30" to 39" Height Adjustment (1090 is 31.5" - 43.5") • Approx. user height: 4'11" - 6'4" (1090 is 4'11" - 6'8") • 300 lb Weight Capacity (1080 Weight Capacity is 500 lb, 1090 Weight Capacity is 275 lb.) All 1060 series canes and C2050BK- come with cane carousel compatible clamshell.



**1040BK**  
Black  
Tip Size: 10018



**1040BR**  
Bronze  
Tip Size: 10018



**1040SI**  
Silver  
Tip Size: 10018



**1055BK**  
Black  
Tip Size: 10020



**1055SI**  
Silver  
Tip Size: 10020



**1060BK**  
Black  
Tip Size: 10018



**1060BL**  
Blue  
Tip Size: 10018



**1060GN**  
Green  
Tip Size: 10018



**1060SI**  
Silver  
Tip Size: 10018



**1060BR**  
Bronze  
Tip Size: 10018



**1080BK**  
Black  
Tip Size: 10022



**1080SI**  
Silver  
Tip Size: 10022



**1090SI**  
Silver  
Tip Size: 20023GR



**2050BK**  
Black  
Tip Size: 10020



**2050BR**  
Bronze  
Tip Size: 10020



**2066LBK**  
Left; Black  
Tip Size: 10018

**2066RBK**  
Right; Black  
Tip Size: 10018



**2066LBR**  
Left; Bronze  
Tip Size: 10018

**2066RBR**  
Right; Bronze  
Tip Size: 10018

# Quad Canes

Lightweight design and low center of gravity combine for greater stability and balance. The offset handle rotates for use with either the left or right hand.

## FEATURES & SPECIFICATIONS

Aluminum cane, steel base

### 5610/5620/5630 Series:

Height Adjustment: 30" - 39"  
Approx. user height: 4'11" - 6'4"

### 5710/5720 Series:

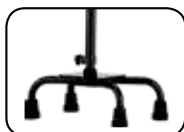
Height Adjustment: 30" - 39"  
Approx. user height: 4'11" - 6'4"

### 5611/5612/5621/5622 Series:

Height Adjustment: 28" - 37"  
Approx. user height: 4'11" - 6'0"



Large Base: 12.25" x 8"  
Tip Size: 50015  
Std. Cane Weight: 2.5 lb  
HD Cane Weight: 4 lb



Small Base: 8.5" x 6"  
Tip Size: 50012  
Std. Cane Weight: 2 lb  
HD Cane Weight: 3.5 lb



Black



Silver

### 5610BK

(Large Base)  
Weight Cap: 250 lb

### 5710BK

(Large Base)  
Weight Cap: 500 lb



### 5610SI

(Large Base)  
Weight Cap: 250 lb

### 5710SI

(Large Base)  
Weight Cap: 500



### 5620BK

(Small Base)  
Weight Cap: 250 lb

### 5720BK

(Small Base)  
Weight Cap: 500 lb



### 5620SI

(Small Base)  
Weight Cap: 250 lb

### 5720SI

(Small Base)  
Weight Cap: 500 lb



Bronze

### 5610BR

(Large Base)  
Weight Cap: 250 lb

### 5620BR

(Small Base)  
Weight Cap: 250 lb



Paisley on Green  
With Ergonomic Handle

### 5611

(Large Base)  
Weight Cap: 250 lb

### 5622

(Small Base)  
Weight Cap: 250 lb



White with Blue Flowers  
With Ergonomic Handle

### 5612

(Large Base)  
Weight Cap: 250 lb

### 5621

(Small Base)  
Weight Cap: 250 lb



### 5631RS

Roses  
(Small Base)  
Weight Cap: 250 lb



### 5632BF

Butterflies  
(Small Base)  
Weight Cap: 250 lb



### 5633BW

Purple Waves  
(Small Base)  
Weight Cap: 250 lb



### 5634LP

Leopard  
(Small Base)  
Weight Cap: 250 lb

## Folding Offset Canes

### FEATURES & SPECIFICATIONS

- Lightweight adjustable canes have soft foam handles
- Fold easily to take anywhere
- Approx. user height: 5'1" - 6'0"
- Weight capacity: 300 lb
- Weight: 1 lb
- Handle Height Adjustments: 33"-37"



**3060BK**  
Black



**3064CH**  
Blue Porcelain

## Rubber Handle Folding Canes

Retail  
Packaged

The 3040 folding canes have a slip-resistant, soft rubber handle and are available in a variety of colors.

### FEATURES & SPECIFICATIONS

Lightweight aluminum  
Adjustable from 33"-37"  
7/8" diameter  
Weighs 1 lb  
Approx. user height: 5'1" - 6'0"  
Weight Capacity: 300 lb  
Tip size: 10018  
Colors: Black & Pink



**3040PK**  
Pink



**3040BK**  
Black

## Palm Grip Canes

### FEATURES & SPECIFICATIONS

The palm handle is much more comfortable than standard cane handles. The anatomical design and large surface area provide added support helping to reduce discomfort and hand fatigue. The palm style handle works especially well for people experiencing carpal tunnel syndrome or arthritis.

- Approx. user height: 4'11" - 6'4"
- Weight Capacity: 300 lb.
- Height Adjustment: 29" - 38"
- 7/8" diameter shaft
- Tip Size: 10018
- Packed 2 per box
- Comes with cane carousel compatible clamshell.



**2062CH-L**  
Blue Porcelain, Left

**2062CH-R**  
Blue Porcelain, Right



**2063RS-L**  
Roses, Left

**2063RS-R**  
Roses, Right



**2064CF-L**  
Camouflage, Left

**2064CF-R**  
Camouflage, Right



**2061BK-L**  
Black, Left

**2061BK-R**  
Black, Right

# CANES

## Rubber Handle Offset Cane

### FEATURES & SPECIFICATIONS

- Slip-resistant soft rubber handle with palm support
- Approx. user height: 4'11" - 6'4"
- Weight Capacity: 300 lb
- Height Adjustable: 30" - 39"
- Tip size: 10018



**1061BK**

Black  
Comes with clamshell



**1061SI**

Silver  
Comes with clamshell

## Specialty Canes

The lightweight aluminum construction and sturdy, comfortable seat is ideal for shoppers, strollers, or golfers.

### Folding Seat Cane

Approx. User Height: 5'4" - 6'2"  
Weight Capacity: 175 lb  
Seat Dimensions: 8" x 8"  
Seat Height: 22"  
Handle Height: 34.5"  
Weight: 1 lb  
Tip Size: 30010

Item # 3090



### Adjustable Folding Seat Cane

Approx. User Height: 5'4" - 6'4"  
Weight Capacity: 225 lb  
Seat Dimensions: 8" x 10"  
Seat Height: 18" - 22"  
Handle Height Adj.: 35" - 39"  
Weight: 2 lb  
Tip Size: 30011

Item # 3091



### Travel Seat Cane With Sling Seat

Approx. User Height: 5'4" - 6'2"  
Weight Capacity: 250 lb  
Seat Dimensions: 12.5" x 6"  
Seat Height: 21.75"  
Weight: 2.5 lb

Item # 3092



### Blind Folding Cane

60" length

Item # 3009

*Retail  
Packaged*



# SugarCane

Sweet Style.

We love the *SugarCane* because it stands with style and is frankly, the Best Cane Ever.



## SugarCane - S1070

- Quad Tip Base allows cane to stand on its own
- Lightweight aluminum
- Adjustable from 28.75" - 39"
- Approximate user height: 4'11" - 6'4"
- Soft foam handles
- Carrying strap
- Fade & chip resistant
- Weighs 1.15 lb
- 300 lb weight capacity

The SugarCane stands on its own!



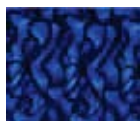
**S1070BK**  
Black



**S1070LP**  
Leopard Print



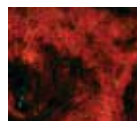
**S1070HT**  
Houndstooth



**S1070PL**  
Blue Waves



**S1070MF**  
Maui Flowers



**S1070MG**  
Mahogany Swirl



**S1070BS**  
Butterfly Symphony



**S1070PG**  
Pink Garden



**S1070CF**  
Camouflage



**S1070WN**  
Walnut Grain

## Cane Accessories Retail Packaged

### Quad Tip Cane Stands

- Allows your cane to stand upright on flat surfaces
- Improves stability and traction on uneven terrain
- Reduces impact on hand and wrist
- Fits canes with 3/4" diameter



Base Dimensions: 4.75" x 4.75"

10040BK

Quad Tip Cane Stand



Base Dimensions: 3" x 3"

10041BK

Mini Quad Tip Cane Stand



Pair Mini Quad Tip with folding cane - ideal for travel!

### Mobility Flashlight FL-2000

- Flashlight adds extra light for safety in dark places
- Rotates 360 degrees



### Cane Strap CANE STRAP

- Fits all canes



### Cane Holder CANE HOLDER

- Attaches easily to most canes



# Cane Tips & Grips



10018/10020



50012



50015

| Item #   | Description                         | Color | Fits   |
|----------|-------------------------------------|-------|--|
| 10018BK  | Cane rubber tip for 3/4" shaft      | Black | 1040, 1060, 2066, 3010, 2011-2041, 7760, 7761  |
| 10018BR  | Cane rubber tip for 3/4" shaft      | Brown | 1040, 1060, 2066, 3010, 2011-2041, 7760, 7761  |
| 10018GR  | Cane rubber tip for 3/4" shaft      | Grey  | 1040, 1060, 2066, 3010, 2011-2041, 7760, 7761  |
| 10020BK  | Cane rubber tip for 5/8" shaft      | Black | 1055, 2050, 2037-2041                          |
| 10020BR  | Cane rubber tip for 5/8" shaft      | Brown | 1055, 2050, 2037-2041                          |
| 10020GR  | Cane rubber tip for 5/8" shaft      | Grey  | 1055, 2050, 2037-2041                          |
| 10022BK  | Cane rubber tip for 7/8" shaft      | Black | Most Canes (1070 offset, T-Grip, Folding etc.) |
| 30010    | Tip for Seat Cane                   | Black | 3090 Seat Cane                                 |
| 30011    | Tip for Seat Cane                   | Black | 3091 Seat Cane                                 |
| 50012BK  | Quad cane rubber tip for 1/2" shaft | Black | 5620, 5621, 5622, 5720                         |
| 50012GR  | Quad cane rubber tip for 1/2" shaft | Grey  | 5620, 5621, 5622, 5720                         |
| 50015BK  | Quad cane rubber tip for 5/8" shaft | Black | 5610, 5611, 5612, 5710                         |
| 50015GR  | Quad cane rubber tip for 5/8" shaft | Grey  | 5610, 5611, 5612, 5710                         |
| TG100-BK | Tip and grip kit                    | Black | Most offset canes                              |
| TG100-GR | Tip and grip kit                    | Grey  | Most offset canes                              |

## The Cane Carousel

### Complete Display & Cane Program

NOVA's Cane Carousel is simply the best cane display on the market. The unique and patented "spinner" rack display can be either free standing or in-line on a peg or slat wall, and it just got better and more beautiful. Better ... with an updated selection of best-selling canes and very efficient and effective two-tiered price and inventory tags. Beautiful ... with a redesigned sign that is both eye catching and super chic. The Cane Carousel also includes a consumer/warranty support program. The program is seamless, easy, and profitable. Give us just 16 inches and we will give you the most profitable item in home healthcare!

### 1001CC

#### Designer Cane Combo

#### Display + Preselected Canes

Dimensions:

16"w x 68"h x 16"d

Includes:

- 20 adjustable aluminum designer canes (10 different prints)
- Free-standing or wall-mounted option

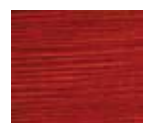
### T-Grip Canes



C2050BK-  
Black



2028  
Leopard

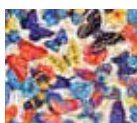


2034  
Walnut Grain

### Offset Canes



C1060BK-  
Black



1070BS  
Butterfly  
Symphony



1070CH  
Blue Porcelain



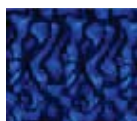
1070CF  
Camouflage



1070MF  
Maui Flowers



1070PG  
Pink Garden



1070PL  
Blue Waves



## 1013CC

### Designer Cane Combo

#### Display + Preselected Canes

Dimensions:

16"w x 68"h x 16"d

Includes:

- 20 adjustable designer aluminum canes (10 different prints)
- 10 adjustable aluminum folding QT Canes (5 different prints)
- Free-standing or wall-mounted option

#### Offset Canes



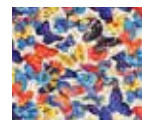
C1060BK-  
Black



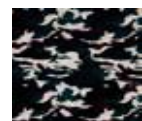
1070CH  
Blue Porcelain



1070PL  
Blue Waves



1070BS  
Butterfly Symphony



1070CF  
Camouflage

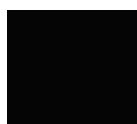


1070MF  
Maui Flowers



1070PG  
Pink Garden

#### QT Canes



QT3010BK  
Black



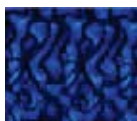
QT3010BR  
Bronze



QT3024  
Maui Flowers



QT3022  
Butterflies



QT3023  
Blue Waves

#### T-Grip Canes



C2050BK-  
Black



2028  
Leopard



2034  
Walnut Grain



# CANE DISPLAYS

## 1039CC

### Designer Cane/Accessory Combo

#### Display + Preselected Canes

Dimensions:

17" w x 68" h x 17" d

Includes:

- 20 adjustable designer aluminum canes (10 different prints)
- 3 Flashlights
- 2 Quad Tips
- 3 Mini Quad Tips
- 3 Cane Straps
- 3 Cane Tips
- 3 Tip & Grip Replacements



10018BK



10041BK



FL-2000



10040BK

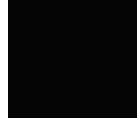


Cane Strap



TG100-BK

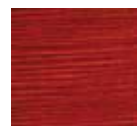
## T-Grip Canes



C2050BK-  
Black



2028  
Leopard



2034  
Walnut Grain

## Offset Canes



C1060BK-  
Black



1070BS  
Butterfly  
Symphony



1070CH  
Blue Porcelain



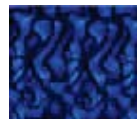
1070CF  
Camouflage



1070MF  
Maui Flowers



1070PG  
Pink Garden



1070PL  
Blue Waves



## 1008CC

### Countertop Cane Display

#### Display + Preselected Canes

Includes:

- 10 adjustable aluminum folding QT Canes (5 different prints)

#### QT Canes



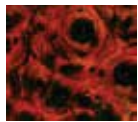
QT3010BK  
Black



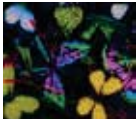
QT3024  
Maui Flowers



QT3010BR  
Bronze



QT3033  
Mahogany Swirl



QT3022  
Butterflies



# CRUTCHES

## Forearm Crutches

### FEATURES & SPECIFICATIONS

Adjustable and lightweight  
Comfortable handle designs  
Heavy-duty tips  
Sold in pairs  
Tip Size - 20022  
Tip Size (7760/7761) - 10018



| Item # | Description                               | User Height   | Weight Cap. |
|--------|---|---------------|-------------|
| 7710P  | Adult forearm crutch                      | 5'3" - 6'0"   | 300 lb      |
| 7711P  | Youth forearm crutch                      | 4'5" - 5'5"   | 300 lb      |
| 7740P  | Adult forearm crutch w/ anatomical handle | 5'3" - 6'2"   | 250 lb      |
| 7741P  | Youth forearm crutch w/ anatomical handle | 4'5" - 5'5"   | 250 lb      |
| 7760P  | Adult elbow crutch                        | 4'11" - 5'11" | 250 lb      |

## Quick Adjust Crutches

Retail  
Packaged

### FEATURES & SPECIFICATIONS

- Lightweight aluminum crutches with quick adjust handles for easy handgrip adjustments
- Available in four sizes by User Height: Pediatric, Youth, Adult, and Tall Adult
- Latex free
- Weight Capacity: 300 lb.
- Packed 8 per box



| Item # | Description | User Height  | Weight Cap. |
|--------|-------------|--------------|-------------|
| 7300   | Tall        | 5'10" - 6'6" | 300 lb      |
| 7301   | Adult       | 5'2" - 5'10" | 300 lb      |
| 7302   | Youth       | 4'6" - 5'2"  | 300 lb      |
| 7303   | Pediatric   | 4'0" - 4'6"  | 300 lb      |

## Push Button Adjustment Crutches

Retail  
Packaged

### FEATURES

- Marked, push button for easy height adjustment
- Latex Free

## Heavy Duty Crutches



### FEATURES

- Made from heavy duty steel
- Large double push buttons allow for height adjustment in 1 inch increments



Push Button Adjustment  
Crutches

Heavy Duty  
Crutches

| Item # | Description                       | User Height  | Weight Cap. |
|--------|-----------------------------------|--------------|-------------|
| 7200   | Push button adjustment, Tall      | 5'10" - 6'6" | 300 lb      |
| 7201   | Push button adjustment, Adult     | 5'2" - 5'11" | 300 lb      |
| 7202   | Push button adjustment, Youth     | 4'6" - 5'2"  | 300 lb      |
| 7203   | Push button adjustment, Pediatric | 4'0" - 4'6"  | 300 lb      |
| 7210   | Heavy Duty, Adult                 | 5'2" - 5'10" | 500 lb      |
| 7211   | Heavy Duty, Tall Adult            | 5'10" - 6'6" | 500 lb      |

## Crutch Accessories

### Crutch Cover Set

Retail  
Packaged

Item # 7012-R (Fleece)

Item # 7013-R (Black Microfiber)

### FEATURES

- Thick fleece or microfiber material provides premium user comfort
- Set includes one pair of under arm covers and one pair of hand grip covers
- Protects against soreness and nerve pressure
- Easy to put on and take off
- Washable



7012-R



7013-R

| Item #  | Description                      | Colors | Fits                         |
|---------|----------------------------------|--------|------------------------------|
| 20022GR | Crutch rubber tip for 7/8" shaft | Gray   | 1080, 7710, 7711, 7740, 7741 |
| 7001    | Rubber underarm pad              | Tan    | 7200, 7201, 7202             |
| 7002    | Rubber handgrip                  | Tan    | 7200, 7201, 7202             |
| 7005    | Rubber tip                       | Tan    | 7200, 7201, 7202             |
| 7001GR  | Rubber underarm pad              | Gray   | 7200, 7201, 7202             |
| 7002GR  | Rubber handgrip                  | Gray   | 7200, 7201, 7202             |
| 7005GR  | Rubber tip                       | Gray   | 7200, 7201, 7202             |



20022



7001GR

7002GR

7005GR

CHOOSE

*independence*

Our walkers are the **Ultimate Plus One** and lifestyle changer with the best **quality, style and selection.**



WALKERS

“

My 89 year old mom is *loving this walker!* She is about 5'1" and the Zoom 18 walker is *the perfect size.* Super well-made ...



*Now I call her Speed Racer!* She loved the pink color, too!

”

- Real NOVA Fan


# ROLLING WALKERS

## Zoom 18

Item # 4218BL 

Item # 4218PL 

Item # 4218DB 

Item # 4218RD 

Item # 4218PK 

### FEATURES

- 18" Seat Height
- Locking Hand Brakes
- Large Padded Seat
- Under Seat Pouch
- Flip-up Back
- Foldable
- 8" Wheels
- Lock N Load

### OPTIONS

- Travel Bag
- Seat Cover
- Cup Holder
- Flashlight Attachment
- Designer Mobility Bags
- Cane Holder



## Zoom 20

Item # 4220BK 

Item # 4220GN 

Item # 4220BL 

Item # 4220DB 

Item # 4220PL 

Item # 4220RD 

Item # 4220PK 

### FEATURES

- 20" Seat Height
- Locking Hand Brakes
- Large Padded Seat
- Under Seat Pouch
- Flip-up Back
- Foldable
- 8" Wheels
- Lock N Load


### OPTIONS


- Travel Bag
- Seat Cover
- Cup Holder
- Flashlight Attachment
- Designer Mobility Bags
- Cane Holder



| Item # | Weight Capacity | Overall Weight | Approx. User Height | Handle Hgt. Adjustment | Width btw Handles | Seat Height | Overall Dimensions | Overall Folded Dimensions      |
|--------|-----------------|----------------|---------------------|------------------------|-------------------|-------------|--------------------|--------------------------------|
| 4218   | 300 lb          | 15.75 lb       | 4'10" - 5'4"        | 27.75" - 31.25"        | 17.75"            | 18"         | 24.5"w x 24.75"    | 33.5" - 37.5"l x 24.5"w x 12"d |
| 4220   | 300 lb          | 16 lb          | 5'2" - 5'8"         | 29.5" - 33.75"         | 17.75"            | 20"         | 24.5"w x 26.25"d   | 35" - 40"l x 24.5"w x 12.25"d  |

## Zoom 22

Item # 4222BK 


Item # 4222GN 

Item # 4222BL 

Item # 4222DB 

Item # 4222PL 

Item # 4222RD 

Item # 4222PK 

### FEATURES


- 22" Seat Height
- Locking Hand Brakes
- Large Padded Seat
- Under Seat Pouch
- Flip-up Back
- Foldable
- 8" Wheels
- Lock N Load

### OPTIONS

- Travel Bag
- Seat Cover
- Cup Holder
- Flashlight Attachment
- Designer Mobility Bags
- Cane Holder



## Zoom 24

Item # 4224BL 

Item # 4224RD 

### FEATURES

- 24" Seat Height
- Locking Hand Brakes
- Large Padded Seat
- Under Seat Pouch
- Flip-up Back
- Foldable
- 8" Wheels
- Lock N Load

### OPTIONS

- Travel Bag
- Seat Cover
- Cup Holder
- Flashlight Attachment
- Designer Mobility Bags
- Cane Holder










| Item # | Weight Capacity | Overall Weight | Approx. User Height | Handle Hgt. Adjustment | Width btw Handles | Seat Height | Overall Dimensions | Overall Folded Dimensions         |
|--------|-----------------|----------------|---------------------|------------------------|-------------------|-------------|--------------------|-----------------------------------|
| 4222   | 300 lb          | 16.25 lb       | 5'5" - 6'1"         | 31.5" - 35.75"         | 17.75"            | 22"         | 24.5"w x 26.25"d   | 36.5" - 41.75"l x 24.5"w x 12.5"d |
| 4224   | 300 lb          | 16.25 lb       | 5'5" - 6'2"         | 33.5" - 37.75"         | 17.75"            | 24"         | 24.5"w x 27.25"d   | 39.25" - 44"l x 24.5"w x 13"d     |

# ROLLING WALKERS

## GetGO Classic

The GetGO Classic is a true classic with **great features** at a **nice value**. Equipped with 6" wheels, large padded seat and under seat pouch.







|                |   |                        |
|----------------|---|------------------------|
| Item # 4202CBK |  | <b>FEATURES</b>        |
|                |   | Locking Hand Brakes    |
| Item # 4202CGN |  | Large Padded Seat      |
|                |   | Under Seat Pouch       |
| Item # 4202CBL |  | Flip-up Back           |
|                |   | Foldable               |
|                |   | 6" Wheels              |
| Item # 4202CDB |  | Lock N Load            |
|                |   | <b>OPTIONS</b>         |
| Item # 4202CPL |  | Travel Bag             |
|                |   | Seat Cover             |
|                |   | Cup Holder             |
| Item # 4202CRD |  | Flashlight Attachment  |
|                |   | Designer Mobility Bags |
| Item # 4202CPK |  | Cane Holder            |

## GetGO Petite

The GetGO Petite, ideal for petite and slight users will get you on the go with **great features** at a very **nice value**.








|                |   |                        |
|----------------|---|------------------------|
| Item # 4208CBL |  | <b>FEATURES</b>        |
|                |   | Locking Hand Brakes    |
| Item # 4208CPL |  | Padded Seat            |
|                |   | Under Seat Pouch       |
| Item # 4208CRD |  | Flip-up Back           |
|                |   | Foldable               |
|                |   | 6" Wheels              |
| Item # 4208CPK |  | Lock N Load            |
|                |   | <b>OPTIONS</b>         |
|                |   | Travel Bag             |
|                |   | Seat Cover             |
|                |   | Cup Holder             |
|                |   | Flashlight Attachment  |
|                |   | Designer Mobility Bags |
|                |   | Cane Holder            |

| Item # | Weight Capacity | Overall Weight | Approx. User Height | Handle Hgt. Adjustment | Width btw Handles | Seat Height | Overall Dimensions | Overall Folded Dimensions       |
|--------|-----------------|----------------|---------------------|------------------------|-------------------|-------------|--------------------|---------------------------------|
| 4202C  | 300 lb          | 14 lb          | 5'4" - 6'1"         | 32.25" - 36.5"         | 17.75"            | 22.25"      | 24"w x 23"d        | 37.5" - 42.25"l x 24"w x 11.5"d |
| 4208C  | 300 lb          | 13 lb          | 4'10" - 5'4"        | 29" - 33.25"           | 15.75"            | 18.5"       | 22"w x 23.5"d      | 35.5" - 40"l x 22"w x 12"d      |

## GetGO Junior NEW!






The GetGO Junior has the same great features as the GetGO Classic with a **lower 18.5" seat height**.

- |                |   |                        |
|----------------|---|------------------------|
| Item # 4209CBL |  | <b>FEATURES</b>        |
|                |   | Locking Hand Brakes    |
| Item # 4209CDB |  | Padded Seat            |
|                |   | Under Seat Pouch       |
| Item # 4209CPL |  | Flip-up Back           |
|                |   | Foldable               |
| Item # 4209CRD |  | 6" Wheels              |
|                |   | Lock N Load            |
| Item # 4209CPK |  | <b>OPTIONS</b>         |
|                |   | Travel Bag             |
|                |   | Seat Cover             |
|                |   | Cup Holder             |
|                |   | Flashlight Attachment  |
|                |   | Designer Mobility Bags |
|                |   | Cane Holder            |



## Star 8 NEW!

Adjust your rolling walker to the perfect height with the **The Star 8**. Choose your seat height to be 19", 20" or 21" which can accommodate users between 5'3" and 6'2".

- |               |   |                        |
|---------------|---|------------------------|
| Item # 4258BK |  | <b>FEATURES</b>        |
|               |   | Locking hand brakes    |
| Item # 4258BL |  | Under Seat Pouch       |
|               |   | Large Padded Seat      |
| Item # 4258DB |  | Flip-up Back           |
|               |   | Adjustable Seat Height |
|               |   | (19", 20" or 21")      |
| Item # 4258PL |  | Foldable               |
|               |   | 8" Wheels              |
| Item # 4258RD |  | <b>OPTIONS</b>         |
|               |   | Travel Bag             |
|               |   | Seat Cover             |
|               |   | Cup Holder             |
|               |   | Flashlight Attachment  |
|               |   | Designer Mobility Bags |
|               |   | Cane Holder            |



| Item # | Weight Capacity | Overall Weight | Approx. User Height | Handle Hgt. Adjustment | Width btw Handles | Seat Height | Overall Dimensions | Overall Folded Dimensions           |
|--------|-----------------|----------------|---------------------|------------------------|-------------------|-------------|--------------------|-------------------------------------|
| 4209C  | 300 lb          | 13.75 lb       | 4'10" - 5'4"        | 28.5" - 32.75"         | 17.75"            | 18.5"       | 24.25"w x 23.25"d  | 34.75" - 39.75"l x 24.25"w x 11.5"d |
| 4258   | 300 lb          | 16.5 lb        | 5'3" - 6'2"         | 31.75" - 38"           | 18.5"             | 19" - 21"   | 25"w x 27.5"d      | 38.5" - 44"l x 25"w x 12.75"d       |

# ROLLING WALKERS

## Vibe 6S

- Item # 4235BK
- Item # 4235BL
- Item # 4235PL
- Item # 4235RD

- FEATURES
- Steel Frame
- Locking Hand Brakes
- Seat w/ built-in seat pad
- Under Seat Pouch
- Flip-up Back
- Foldable
- 6" Wheels
- OPTIONS
- Travel Bag
- Seat Cover
- Cup Holder
- Flashlight Attachment
- Designer Mobility Bags
- Cane Holder



## Vibe Petite Wide



- Item # 4239BL
- Item # 4239RD

- FEATURES
- Extra wide padded seat
- 18" seat height
- Locking hand brakes
- Removable back
- Foldable
- 8" Wheels
- OPTIONS
- Travel Bag
- Cup Holder
- Flashlight Attachment
- Designer Mobility Bags
- Cane Holder



| Item # | Weight Capacity | Overall Weight | Approx. User Height | Handle Hgt. Adjustment | Width btw Handles | Seat Height | Overall Dimensions | Overall Folded Dimensions         |
|--------|-----------------|----------------|---------------------|------------------------|-------------------|-------------|--------------------|-----------------------------------|
| 4235   | 300 lb          | 16.75 lb       | 5'4" - 6'1"         | 32.25" - 36.5"         | 18"               | 22"         | 24"w x 26.25"d     | 38.25" - 43"l x 23.75"w x 12.75"d |
| 4239   | 400 lb          | 18 lb          | 4'10" - 5'4"        | 29" - 33.25"           | 21.75"            | 18"         | 28"w x 25.25"d     | 34.75" - 39.5"l x 24"w x 13"d     |

## Forté

The **Forté** is about strength, expertise and conviction. We know NOVA is the best and our new Forté is strong, beautiful and for the intentional. It stands when folded, carries your things, comes in two seat heights and makes a bold statement. *Fortissimo!*

Item # 4320BL  
4323BL



Item # 4320RD  
4323RD



Item # 4320DB  
4323DB



*Diamond Sky Blue  
Available July 2018*

### FEATURES

- Locking hand brakes
- Removable front pouch
- Foldable
- 8" Wheels

**Stands alone when folded**

### OPTIONS

- Travel Bag
- Cup Holder
- Flashlight Attachment
- Designer Mobility Bags
- Cane Holder

**4320**  
20.5" Seat Height



**4323**  
23.5" Seat Height



| Item # | Weight Capacity | Overall Weight | Approx. User Height | Handle Hgt. Adjustment | Width btw Handles | Seat Height | Overall Dimensions | Overall Folded Dimensions          |
|--------|-----------------|----------------|---------------------|------------------------|-------------------|-------------|--------------------|------------------------------------|
| 4320   | 300 lb          | 15 lb          | 5'2" - 5'9"         | 30" - 34"              | 16.25"            | 20.5"       | 22.5"w x 24.5"d    | 30" - 34"l x 23.75"w x 8.5"d       |
| 4323   | 300 lb          | 15.75 lb       | 5'4" - 6'2"         | 31" - 37"              | 18.25"            | 23.5"       | 24.5"w x 26.5"d    | 30.75" - 37.25"l x 26.25"w x 8.5"d |

# ROLLING WALKERS

## Groove

Retail  
Packaged

Item # 4204BL  
4204BL-R



Item # 4204RD  
4204RD-R



- 4204BL-R & 4204RD-R (Retail Packaged)
- 4204BL & 4204RD (Brown Box)

### FEATURES

Locking hand brakes  
Under Seat Pouch  
Large Padded Seat  
Flip-up Back  
Height Adjustable  
Foldable  
8" Wheels

### OPTIONS

Travel Bag  
Seat Cover  
Cup Holder  
Flashlight Attachment  
Designer Mobility Bags  
Cane Holder

Adjust your rolling walker to the perfect height with the **The GetGO Groove**. Choose your seat height to be either 20" or 22.5," which can accommodate users between 5'4" and 6'1".

**Adjustable handle height**  
Low: 29.75" - 35.75"  
High: 32.25" - 38.5"



## Journey

Retail  
Packaged

Item # 4205BK



Item # 4205BL  
4205BL-R



Item # 4205PL



Item # 4205RD



- 4205BL-R (Retail Packaged)
- 4205BK, 4205BL, 4205PL & 4205RD (Brown Box)

### FEATURES

Steel Frame  
Locking Hand Brakes  
Large Padded Seat  
Under Seat Pouch  
Flip-up Back  
Height Adjustable  
Foldable  
6" Wheels

### OPTIONS

Travel Bag  
Seat Cover  
Cup Holder  
Flashlight Attachment  
Designer Mobility Bags  
Cane Holder

Life's a trip! Let the Journey take you on the ride of your life. This walker truly celebrates personal mobility with dual height adjustments for a custom fit and color choices that are super cool and sizzling hot.

**Adjustable handle height**  
Low: 27.75" - 34"  
High: 30.5" - 36.5"



| Item # | Weight Capacity | Overall Weight | Approx. User Height | Width btw Handles | Seat Height | Overall Dimensions | Overall Folded Dimensions         |
|--------|-----------------|----------------|---------------------|-------------------|-------------|--------------------|-----------------------------------|
| 4204   | 300 lb          | 16.75 lb       | 5'4" - 6'1"         | 18"               | 20" & 22.5" | 23.75"w x 26.5"    | 38.75" - 45.75"l x 23.75"w x 13"d |
| 4205   | 275 lb          | 17 lb          | 4'9" - 6'0"         | 18"               | 18.5" & 21" | 23.75"w x 24"d     | 33.75" - 44"l x 23.75"w x 12.25"d |

## Cruiser Classic



Item # 4200CBL



Item # 4200CRD



The Cruiser Classic allows you to cruise along with a weight activated brake system. This walker DOES NOT have locking hand brakes for those unable to use them. Moderate-to-good stability is required to use the weight active brake system which is non-locking.

### FEATURES

Weight Activated Drag Brake  
(non-locking)  
Padded Seat  
Under Seat Pouch  
Flip-up Back  
Foldable  
5" Wheels  
Lock N Load

### OPTIONS

Travel Bag  
Seat Cover  
Cup Holder  
Flashlight Attachment  
Designer Mobility Bags  
Cane Holder

## Cruiser II



Item # 4201BL



The Cruiser II is ideal for beginning gait training with 5" front wheels and rear rubber tips to prevent the walker from rolling away. The rolling walker frame and seat provide the stability, safety, and confidence to establish a natural walking pattern.

### FEATURES

Padded Seat  
Under Seat Pouch  
Flip-up Back  
Foldable  
5" Wheels  
Lock N Load

### OPTIONS

Travel Bag  
Seat Cover  
Cup Holder  
Tray  
Flashlight Attachment  
Designer Mobility Bags  
Glide Skis (40026GR)  
Cane Holder

## Cruiser De-Light



Basket not included

Item # 4010BL



Item # 4010RD



The Cruiser De-Light is a real pleasure! It is the only 4-wheeled rolling walker that folds and has adjustable legs like a standard folding walker with the added benefits of locking hand brakes and a seat.

### FEATURES

Locking Hand Brakes  
Seat w/ built-in Seat Pad  
Foldable  
5" Wheels

### OPTIONS

Basket (4010B)  
Tray  
Travel Bag  
Cup Holder  
Flashlight Attachment  
Designer Mobility Bags  
Cane Holder

| Item # | Weight Capacity | Overall Weight | Approx. User Height | Handle Hgt. Adjustment | Width btw Handles | Seat Height   | Overall Dimensions | Overall Folded Dimensions         |
|--------|-----------------|----------------|---------------------|------------------------|-------------------|---------------|--------------------|-----------------------------------|
| 4200C  | 250 lb          | 12 lb          | 5'3" - 6'0"         | 31.5" - 36"            | 17.5"             | 21.25"        | 24.5"w x 22.5"     | 37.5" - 42.5"l x 24.5"w x 10.75"d |
| 4201   | 250 lb          | 10.5 lb        | 5'3" - 6'0"         | 32" - 35.25"           | 17.5"             | 20.5"         | 21.5"w x 20.75"d   | 36.5" - 41.25"l x 21.5"w x 10.5"d |
| 4010   | 250 lb          | 16.25 lb       | 5'4" - 6'2"         | 34" - 38"              | 18"               | 19.5" - 23.5" | 27.75"w x 24.25"d  | 35" - 39"l x 27.75"w x 8.75"d     |

ROLLING WALKERS

Cruiser Deluxe

- Item # 4202BK

FEATURES

Locking Hand Brakes
- Item # 4202BL

Seat w/ built-in seat pad

Front Wire Basket
- Item # 4202GN

Flip Up Back

Foldable
- Item # 4202PL

8" Wheels

Lock N Load
- Item # 4202RD

OPTIONS

Travel Bag

Tray

Basket Cover Bag

Cup Holder

Flashlight Attachment

Designer Mobility Bags

Cane Holder

The Cruiser Deluxe is the **legend** in the NOVA Line. Equipped with the **best of the best**, the Cruiser Deluxe comes with 8" wheels, a deluxe seat with built-in seat pad and a sleek frame.



Cruiser Deluxe Jr.

- Item # 4207BL

FEATURES

Locking Hand Brakes
- Item # 4207RD

Seat w/ built-in seat pad

Front Wire Basket
- Flip Up Back

Foldable
- 6" Wheels

Lock N Load
- OPTIONS

Travel Bag

Tray

Basket Cover Bag

Cup Holder

Flashlight Attachment

Designer Mobility Bags

Cane Holder

The Cruiser Deluxe Junior has a lower handle adjustment and seat height than the Cruiser Deluxe. The Cruiser Deluxe Junior comes with 6" wheels, a deluxe seat with built-in pad and a sleek frame.



| Item # | Weight Capacity | Overall Weight | Approx. User Height | Handle Hgt. Adjustment | Width btw Handles | Seat Height | Overall Dimensions | Overall Folded Dimensions           |
|--------|-----------------|----------------|---------------------|------------------------|-------------------|-------------|--------------------|-------------------------------------|
| 4202   | 300 lb          | 18 lb          | 5'4" - 6'0"         | 32" - 36"              | 19"               | 21"         | 22.75"w x 28.25"d  | 39.5" - 44.5"l x 22.75"w x 14"d     |
| 4207   | 300 lb          | 16.5 lb        | 4'11" - 5'5"        | 30.5" - 34.75"         | 19"               | 19.75"      | 22.75"w x 26"d     | 38.25" - 43.25"l x 22.75"w x 13.5"d |

## Mini Mack



Item # 4214BL



### FEATURES

- Locking Hand Brakes
- Seat w/ built-in seat pad
- Front Wire Basket
- Flip-up Back
- Foldable
- 8" Wheels
- Lock N Load

### OPTIONS

- Travel Bag
- Tray
- Basket Cover Bag
- Cup Holder
- Flashlight Attachment
- Designer Mobility Bags
- Cane Holder

Item # 4214RD



The Mini Mack is **strong** and **reliable** with a 400 pound weight capacity and a lower seat height for more **petite** users. Now with more durable, longer lasting wheels and lighter overall weight.

## Mack



Item # 4215BL



### FEATURES

- Locking Hand Brakes
- Extra Wide Seat w/ built-in seat pad
- Front Wire Basket
- Flip-up Back
- Foldable
- 8" Wheels
- Lock N Load

### OPTIONS

- Travel Bag
- Tray
- Basket Cover Bag
- Cup Holder
- Flashlight Attachment
- Designer Mobility Bags
- Cane Holder

Item # 4215RD



The Mack is **strong** and **reliable** with a 400 pound weight capacity and a standard height for **average height** to **tall** users. Now with more durable, longer lasting wheels and lighter overall weight.

| Item # | Weight Capacity | Overall Weight | Approx. User Height | Handle Hgt. Adjustment | Width btw Handles | Seat Height | Overall Dimensions | Overall Folded Dimensions           |
|--------|-----------------|----------------|---------------------|------------------------|-------------------|-------------|--------------------|-------------------------------------|
| 4214   | 400 lb          | 17.75 lb       | 4'11" - 5'5"        | 29.5" - 33.75"         | 20.5"             | 19.5"       | 24.5"w x 24.5"d    | 34.75" - 39.75"l x 24.5"w x 13.75"d |
| 4215   | 400 lb          | 18.25 lb       | 5'5" - 6'2"         | 34.5" - 39"            | 20.5"             | 23"         | 24.5"w x 27.5"d    | 40" - 45"l x 24.5"w x 13.75"d       |

ROLLING WALKERS

Mighty Mack



The **strongest of them all** is the Mighty Mack with a 500 pound weight capacity and a standard seat height for **average to tall** users. Now with more durable, longer lasting wheels.

- Item # 4216BL

FEATURES
- Item # 4216RD

Locking Hand Brakes
- Extra Wide Seat w/ built-in seat pad
- Front Wire Basket
- Removable Back
- Foldable
- 8" Wheels
- OPTIONS
- Travel Bag
- Tray
- Basket Cover Bag
- Cup Holder
- Flashlight Attachment
- Designer Mobility Bags
- Cane Holder



Traveler

The Traveler will take you many places with its unique, **three wheel** maneuverable design.

- Item # 4900BK

FEATURES
- Item # 4900BL

Locking Hand Brakes
- Item # 4900PL

Tray (Dimensions: 9.5"w x 8"d)
- Item # 4900RD

Basket
- Pouch
- Foldable
- 8" Wheels
- OPTIONS
- Travel Bag
- Cup Holder
- Flashlight Attachment
- Designer Mobility Bags



| Item # | Weight Capacity | Overall Weight | Approx. User Height | Handle Hgt. Adjustment | Width btw Handles | Seat Height | Overall Dimensions | Overall Folded Dimensions     |
|--------|-----------------|----------------|---------------------|------------------------|-------------------|-------------|--------------------|-------------------------------|
| 4216   | 500 lb          | 24.2 lb        | 5'5" - 6'0"         | 30.25" - 36"           | 23.25"            | 21.5"       | 27.75"w x 25.75"d  | 31" - 37"l x 27.75"w x 18.5"d |
| 4900   | 250 lb          | 16 lb          | 5'4" - 6'2"         | 33" - 37.25"           | 12"               | -           | 24.25"w x 23.75"d  | 33" - 37.25"l x 26"w x 11"d   |

# Lock N Load

The exclusive, patented NOVA Lock N Load device keeps your walker in a folded position for easy loading and unloading!

## Locked



## Unlocked



Item # H-1002

Fits models: 4218, 4220, 4222, 4224, 4202C, 4208C, 4209C, 4202, 4207, 4200C, 4201, 4214, 4215



Visit our Website for our  
Lock N Load tutorial!



FOLDING WALKERS

Folding Walkers

Folding Walkers are NOT all the same. Although they are common and standard in features (most are grey...not our favorite), there are a lot of great accessories to make these folding walkers look and function 1000% better...and they even come in colors!



4080BW5/4080RW5 - Designer Folding Walker - Dual Button Release  
4081BW5 - Travel Folding Walker with Bag and Walker Skis

Dual button release provides greater security. Folds to 4" width for easy transport and storage. Easy-release folding mechanism and durable skid resistant rubber tips.

| Item #  | Description   | Color | Height Adjust.  | Dia. | Weight Cap. | Approx. User Ht. |
|---------|---|-------|-----------------|------|-------------|------------------|
| 4080BW5 | Adult folding walker w/ 5" wheels                                     | Blue  | 32.25" - 38.25" | 1"   | 300 lb      | 5'4" - 6'2"      |
| 4080RW5 | Adult folding walker w/ 5" wheels                                     | Pink  | 32.25" - 38.25" | 1"   | 300 lb      | 5'4" - 6'2"      |
| 4081BW5 | Adult folding walker w/ 5" wheels, walker skis (black) & mobility bag | Blue  | 30.5" - 37.5"   | 1"   | 300 lb      | 5'3" - 6'2"      |

Tip Size - 40024   Width Between Handles - 17"   Overall Width - 22.5" - 25.75"   Weight - 6.5 lb



Dimensions: 21.5"w x 16.5"h x 4"d

- Frame detaches from the legs for compact storage



Dimensions: 18"w x 7"h x 4"d

- Travel bag holds walker legs and keeps dirty wheels and tips away from garments

# FOLDING WALKERS



4060



4070DW5

## 4060/4070 - Folding Walker - Single-button release

Single button release makes folding simple. Folds to 4" width for easy transport and storage. Durable skid resistant rubber tips.

| Item #  | Description                       | Height Adjust.  | Dia. | Weight Cap. | Approx. User Ht. |
|---------|-----------------------------------|-----------------|------|-------------|------------------|
| 4060    | Side (hemi) folding walker        | 32" - 36.75"    | 3/4" | 250 lb      | 5'4" - 6'1"      |
| 4070D   | Adult folding walker              | 31.75" - 37.75" | 1"   | 300 lb      | 5'4" - 6'2"      |
| 4070DW5 | Adult folding walker w/ 5" wheels | 32.25" - 38.25" | 1"   | 300 lb      | 5'4" - 6'2"      |
| 4070YW5 | Youth folding walker w/ 5" wheels | 29.25" - 33.25" | 1"   | 300 lb      | 5'0" - 5'5"      |

4060: Tip Size - 10018

4070: Tip Size - 40024 Width Between Handles - 17" Overall Width - 23.25" - 25.75" Weight - 5 - 6 lb



4090PW5



4090DW5



4095DW5



## 4090P (Pediatric)/4090/4095 (Heavy Duty) - Folding Walker - Dual-button release

Dual-button release provides greater security. Folds to 4" width (4.5" - Pediatric) for easy transport and storage. Pediatric walker is 3" narrower than standard walkers. Easy-release folding mechanism and durable skid resistant rubber tips.

| Item #  | Description                              | Height Adjust.  | Dia. | Weight Cap. | Approx. User Ht. |
|---------|--|-----------------|------|-------------|------------------|
| 4090P   | Pediatric folding walker                 | 24.75" - 28"    | 1"   | 300 lb      | 4'7" - 5'0"      |
| 4090PW5 | Pediatric folding walker w/ 5 in. wheels | 26.25" - 30"    | 1"   | 300 lb      | 4'7" - 5'0"      |
| 4090    | Adult folding walker                     | 31.75" - 37.75" | 1"   | 300 lb      | 5'4" - 6'2"      |
| 4090Y   | Youth folding walker                     | 29" - 33"       | 1"   | 300 lb      | 5'0" - 5'5"      |
| 4090DW3 | Adult folding walker w/ 3" wheels        | 32" - 38"       | 1"   | 300 lb      | N/A              |
| 4090YW3 | Youth folding walker w/ 3" wheels        | 29.25" - 33.25" | 1"   | 300 lb      | N/A              |
| 4090DW5 | Adult folding walker w/ 5" fixed wheels  | 32" - 38"       | 1"   | 300 lb      | 5'4" - 6'2"      |
| 4090YW5 | Youth folding walker w/ 5" fixed wheels  | 29.25" - 33.25" | 1"   | 300 lb      | 5'0" - 5'5"      |
| 4095    | Heavy Duty folding walker                | 31" - 41"       | 1"   | 500 lb      | 5'4" - 6'2"      |
| 4095DW5 | Heavy Duty folding walker w/ 5" wheels   | 31" - 41"       | 1"   | 500 lb      | 5'4" - 6'2"      |

4090P: Tip Size - 40024 Dimensions: 26"h x 20"w x 15.75"d Folded Dimensions: 26"h x 20"w x 4.5"d

4090: Tip Size - 40024 Width Between Handles - 17" - 17.5" Overall Width - 22.5" - 25.25" Weight - 5.25 - 6.25 lb

4095DW5: Tip Size - CH-409501 Width Between Handles 20.5" Overall Width 24" Weight 8 lb

CHOOSE

# *Individuality*

Cup Holders, Mobility Bags, Flashlights and more ... make your  
Rolling Walker or Transport Chair **uniquely yours.**



MOBILITY ACCESSORIES

“

This **gorgeous bag** is perfect for the side of my new powerchair.



The fabric is very sturdy, it's **well made** and you have several options for attachment.

”

- Real NOVA Fan

# Mobility Bags

Retail  
Packaged



- Features:
- Securely attaches to rolling walkers, folding walkers, transport chairs and wheelchairs
  - Spacious interior and outer pocket
  - Comes with finger key rings for easy zipper open and close
  - Dimensions: 6”h x 9.5”l x 2.5”w (4006)  
11”h x 11”l x 3”w (4008)  
10.5”h x 11.5”l x 2.5”w (4009)

| Item # | Description      |
|--------|------------------|
| 4006BB | Boho Blossoms    |
| 4006BK | Classic Black    |
| 4008BB | Boho Blossoms    |
| 4008EG | English Garden   |
| 4008GA | Enchanted Garden |
| 4008LP | Leopard          |
| 4009BK | Classic Black    |



## Seat and Back Covers

Retail  
Packaged

### Features:

- Fits on most rolling walkers with a seat and backrest
- Elastic is sewn into the seat cover for an easy, snug fit

\*Fits all models with seats up to 14" x 14"  
(except 4010, 4202, 4207, 4214, 4215, 4216,  
4239, 4320, and 4323)

\*4007SL, 4007BP, 4007GD & 4007SC are faux  
fur material



Black Puma  
Item # 4007BP



Grey Dusk  
Item # 4007GD



Snow Leopard  
Item # 4007SL



Safari Cheetah  
Item # 4007SC



English Garden  
Item # 4007EG



**NEW!** Anchors Aweigh  
Item # 4007AW



**NEW!** Aloha Blue  
Item # 4007AB



**NEW!** Boho Blossoms  
Item # 4007BB

## 4070/4080/4090/4095 Series Accessories



| Item # | Description   |
|--------|---|
| 408SI  | 3" fixed wheels <span>Retail Packaged</span>                          |
| 408YSI | 3" fixed wheels- youth  |
| 410SI  | 5" fixed wheels- <span>Retail Packaged</span>                         |
| 410BL  | 5" fixed wheels- Blue   |
| 410RD  | 5" fixed wheels- Red  |
| 410YSI | 5" fixed wheels- youth  |
| 412SI  | Glide brakes  |
| 418SI  | 3" swivel wheels  |
| 420SI  | 5" swivel wheels  |
| 422SI  | 3" wheel w/ glide brake   |
| 424SI  | 1" leg w/ extra long shaft  |
| 4248SI | Leg extension combo pack for 4090 (includes 5" wheel & leg extension) |
| 426SI  | 3" wheels w/ extra long shaft   |
| 427SI  | 5" Heavy Duty Wheels for 4095   |
| 428SI  | 5" wheels w/ extra long shaft for 4070/4090                           |
| 431SI  | Adjustable legs for 4070/4090   |
| 431BL  | Legs for 4080B Folding Walker (Pair)                                  |
| 431RD  | Legs for 4080R Folding Walker (Pair)                                  |
| 435SI  | Forearm Attachment for 1" Folding Walker                              |
| 440SI  | Rear leg w/ tip for 4095  |



### 435SI Forearm Attachment

- Fits 4070/4090
- Clamps included

| Item #  | Description       | Fits                                 |
|---------|-------------------|--------------------------------------|
| 40023GR | gray rubber tips  | 4081 series, 411, 421                |
| 40023BK | black rubber tips | 4081 series, 411, 421                |
| 40024GR | gray rubber tips  | 4070/4080/4090/4095 series, 412, 422 |
| 40024BK | black rubber tips | 4070/4080/4090/4095 series, 412, 422 |
| 40028GR | gray glide tips   | 4070/4080/4090 series                |
| 40029BK | black glide caps  | 4070/4080/4090/4095 series           |
| 40028   | gray glide skis   | 4095 series                          |

Retail Packaged

Retail Packaged

Retail Packaged

Retail Packaged

Retail Packaged



40028GR



40029BK

## Walker Skis

Retail  
Packaged

Walker Skis help walkers glide easier without additional wear and tear. They are made of a special engineered thermoplastic, polyoxymethylene (POM), designed for high stiffness, low friction, and maximum stability. They are durable, easy-to-clean, and stylish. Most important, unlike tennis balls, they are made specifically for walkers.



Item # 40027GR  
Gray



Item # 40027BK  
Black



**JUST SAY NO!**

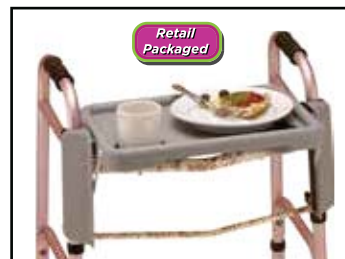
## Folding Walker Accessories



### Folding Walker Bags

Item # 4001AP (Aloha Pink)  
Item # 4001BK (Black)

- Attaches securely to folding walkers to add style and hold personal belongings
- Easy-to-access pockets on both front and back



### Folding Walker Tray

Item # 436T

- Carry items from room to room
- Folds down when not in use
- Cup holders prevent drink spills
- Installs easily
- For 4080 and 4090 series



### Walker Basket

Item # 437B

- Heavy gauge durable steel
- Includes plastic liner
- For 4090 adult series only



### Basket with Plastic Liner

Item # 438B

- Fits both 1-button & 2-button walkers
- Plastic Tray/Liner with cup holder included



### Walker Tray

Item # 439T-R

- Carry items from room to room
- 1/2" raised edge keeps items from sliding off
- Holds meals, books, personal items etc.
- Cup holders help prevent drink spills
- Fits most folding walkers
- Holds up to 10 lb

**NEW!**

# MOBILITY ACCESSORIES

## FLASHLIGHT

Retail  
Packaged



Item # FL-2000  
\*includes battery



Item # FL-1000

- Adds extra light for safety in dark places
- Attaches to most walkers, transport chairs, and wheelchairs
- Rotates 360 degrees

## CANE HOLDER

Retail  
Packaged



Item # CH-4000R

Attaches to any walker with a 1" diameter frame and provides a perfect and secure home for your cane

## FOLDING CUP HOLDER



CH-1000

Folded

Item # CH-1000

- Attaches easily to walkers, wheelchairs, bed rails and transport chairs
- Adjusts to hold different sized items
- Folds up when not in use

## CUP HOLDER



CH-2000

Item # CH-2000

Item # CH-2000R

Retail  
Packaged

Attaches easily to walkers, wheelchairs, bed rails and transport chairs

## ADJUSTABLE CUP HOLDER

Retail  
Packaged



CH-2100R

NEW!

Item # CH-2100R  
Available July 2018

- Attaches easily to walkers, wheelchairs, and bed rails
- Firmly holds containers up to 2.75" diameter
- Adjusts to fit multiple angles

## SWIVEL CUP HOLDER

Retail  
Packaged



CH-3000R



Swivels Inward

Item # CH-3000R

- Attaches easily to walkers, wheelchairs, bed rails and transport chairs
- Swivels inward to fit through tight spaces
- Adjusts to hold different sized items

# MOBILITY ACCESSORIES

## BASKET COVER BAG



Item # 4200P

- Easy-Access Velcro Top
- Water Resistant
- **Item # 4200P** for 4200/4201/4202/4207/4203/4212 basket

## HANGING WALKER POUCH

Retail  
Packaged



Item # P4200SB (Aloha)

Item # 4001WP (Black)

- Fits all folding and 4200 series walkers
- Velcros to front crossbar of folding walker or backrest of 4200 series
- Extra storage for lightweight objects

## TRAVEL BAG

Retail  
Packaged

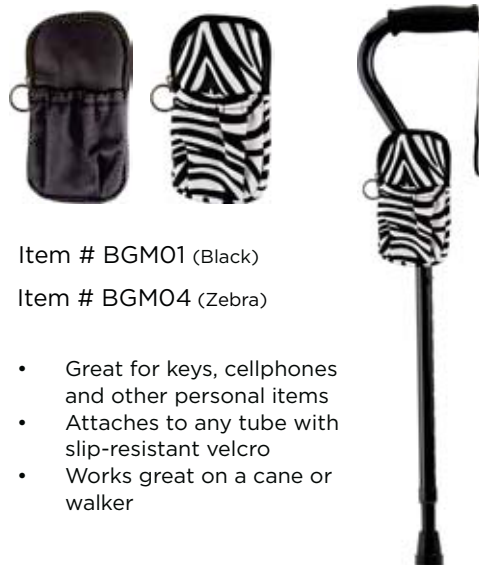


Item # 4000TB

- Fits all folding, rolling walkers, and transport chairs (except 330, 332, 352)
- Nylon bag, perfect for airline travel or storage
- 34" w x 26.5" h x 9.25" d

## MOBILITY WRISTLETS

Retail  
Packaged



Item # BGM01 (Black)

Item # BGM04 (Zebra)

- Great for keys, cellphones and other personal items
- Attaches to any tube with slip-resistant velcro
- Works great on a cane or walker

## WALKER TRAY

Retail  
Packaged



Item # 4000T

- Carry food, drinks, and various personal belongings
- Fits 4202, 4207, 4010, 4214, 4215

CHOOSE

*togetherness*

Transport Chairs are about going places, being together and  
experiencing life ... **together.**



TRANSPORT CHAIRS & WHEELCHAIRS

*“I feel safe, very comfortable and secure riding in my NOVA.”*



*“My family can easily take me to many places that were not accessible to me before.”*

- Real NOVA Fan

STEEL TRANSPORT CHAIRS

309

Item # 309  
(Hammertone)

- FEATURES**
- Carbon steel frame
  - Fixed full-length arms
  - Quick release fold-down back
  - Locking rear wheels
  - Non-skid foot plates & heel loops
  - Foldable
  - 19" Seat Height
  - Back Height from Seat: 18.25"
  - 8" Wheels
- OPTIONS**
- Travel Bag
  - Flashlight Attachment
  - Designer Mobility Bags



HCPCS # E1038

319

- Item # 319B
- Item # 319BK
- Item # 319R
- Item # 319C

- FEATURES**
- Carbon steel frame
  - Fixed full-length arms
  - Quick release fold-down back
  - Locking rear wheels
  - Non-skid foot plates & heel loops
  - Foldable
  - 19.75" Seat Height
  - Back Height from Seat: 17.75"
  - 8" Wheels
- OPTIONS**
- Travel Bag
  - Flashlight Attachment
  - Designer Mobility Bags



HCPCS # E1038

| Item # | Weight Capacity | Overall Weight | Width btw Arms | Arm Height from Seat | Seat Dimensions | Overall Dimensions        | Overall Folded Dimensions |
|--------|-----------------|----------------|----------------|----------------------|-----------------|---------------------------|---------------------------|
| 309    | 300 lb          | 23 lb          | 16.5"          | 11.25"               | 19"w x 15.75"d  | 39.5"h x 23.5"w x 27"d    | 31.5"h x 10"w x 26.5"d    |
| 319    | 300 lb          | 22.75 lb       | 16.5"          | 11"                  | 19"w x 15.75"d  | 39.75"h x 23.5"w x 27.5"d | 31.5"h x 9.75"w x 26.5"d  |

# ALUMINUM TRANSPORT CHAIRS

## 329

Item # 329B



Item # 329BK



Item # 329R



### FEATURES

Lightweight aluminum frame  
Fixed full-length arms  
Quick release fold-down back  
Locking rear wheels  
Non-skid foot plates & heel loops  
Foldable  
19.5" Seat Height  
Back Height from Seat: 18.25"  
8" Wheels

### OPTIONS

Travel Bag  
Flashlight Attachment  
Designer Mobility Bags



HCPCS # E1038

## 329CP

Item # 329CP



### FEATURES

Lightweight aluminum frame  
Fixed full-length arms  
Quick release fold-down back  
Locking rear wheels  
Non-skid foot plates & heel loops  
Foldable  
19.5" Seat Height  
Back Height from Seat: 18.25"  
8" Wheels

### OPTIONS

Travel Bag  
Flashlight Attachment  
Designer Mobility Bags





HCPCS # E1038

| Item # | Weight Capacity | Overall Weight | Width btw Arms | Arm Height from Seat | Seat Dimensions | Overall Dimensions     | Overall Folded Dimensions |
|--------|-----------------|----------------|----------------|----------------------|-----------------|------------------------|---------------------------|
| 329    | 300 lb          | 19.5 lb        | 16.5"          | 11"                  | 19"w x 15.75"d  | 39.5"h x 23.5"w x 28"d | 31.25"h x 9.5"w x 26.75"d |
| 329CP  | 300 lb          | 19.5 lb        | 16.5"          | 11"                  | 19"w x 15.75"d  | 39.5"h x 23.5"w x 28"d | 31.25"h x 9.5"w x 26.75"d |

# ALUMINUM TRANSPORT CHAIRS

## 327

Item # 327B 

Item # 327R 

### FEATURES

- Lightweight aluminum frame
- Fixed full-length arms
- Quick release fold-down back
- Locking rear wheels
- Non-skid foot plates & heel loops
- Foldable
- 19.5" Seat Height
- Back Height from Seat: 18.25"
- 8" Wheels

### OPTIONS

- Travel Bag
- Flashlight Attachment
- Designer Mobility Bags



HCPCS # E1038

## 330

Item # 330B 

Item # 330R 

### FEATURES

- Lightweight aluminum frame
- Fixed full-length arms
- Quick release fold-down back
- Hand brakes & Locking rear wheels
- Non-skid foot plates & heel loops
- Foldable
- 19.5" Seat Height
- Back Height from Seat: 19.25"
- 8" Front Wheels & 12" Rear Wheels

### OPTIONS

- Travel Bag
- Flashlight Attachment
- Designer Mobility Bags



HCPCS # E1038

| Item # | Weight Capacity | Overall Weight | Width btw Arms | Arm Height from Seat | Seat Dimensions   | Overall Dimensions      | Overall Folded Dimensions |
|--------|-----------------|----------------|----------------|----------------------|-------------------|-------------------------|---------------------------|
| 327    | 300 lb          | 19.5 lb        | 14.5"          | 11"                  | 16.75"w x 15.75"d | 39.5"h x 20.75"w x 28"d | 31.25"h x 9.5"w x 26.75"d |
| 330    | 300 lb          | 24.75 lb       | 17.25"         | 12.5"                | 19.75"w x 15.75"d | 40.5"h x 24"w x 30.5"d  | 32.5"h x 10"w x 29.25"d   |

# ALUMINUM TRANSPORT CHAIRS

## 377

Retail  
Packaged

Item# 377B-R



### FEATURES

- Lightweight aluminum compact frame
- Fixed desk arms
- Quick release fold-down back
- Locking rear wheels
- Non-skid foot plates
- Foldable
- 19" Seat Height
- Back Height from Seat: 15.25"
- 8" Wheels

### OPTIONS

- Travel Bag
- Flashlight Attachment
- Designer Mobility Bags



HCPCS # E1038

## 379

Item # 379B



Item # 379BK



Item # 379R



### FEATURES

- Ultra lightweight aluminum compact frame
- Fixed desk arms
- Quick release fold-down back
- Locking rear wheels
- Non-skid foot plates
- Foldable
- 19" Seat Height
- Back Height from Seat: 15.25"
- 8" Wheels

### OPTIONS

- Travel Bag
- Flashlight Attachment




HCPCS # E1038


| Item # | Weight Capacity | Overall Weight | Width btw Arms | Arm Height from Seat | Seat Dimensions | Overall Dimensions     | Overall Folded Dimensions |
|--------|-----------------|----------------|----------------|----------------------|-----------------|------------------------|---------------------------|
| 377    | 250 lb          | 20 lb          | 17.5"          | 8.75"                | 17.75"w x 16"d  | 37"h x 22.5"w x 29.5"d | 29.5"h x 9.25"w x 23.25"d |
| 379    | 300 lb          | 18.75 lb       | 17.5"          | 9"                   | 18"w x 16"d     | 37"h x 22.5"w x 30"d   | 29.5"h x 9.75"w x 23.75"d |

# ALUMINUM TRANSPORT CHAIRS

332



Item # 332B 

Item # 332R 

**FEATURES**

- Lightweight aluminum frame
- Flip-up desk arms
- Hand brakes & Locking rear wheels
- Non-skid foot plates & heel loops
- Foldable
- 20" Seat Height
- Back Height from Seat: 17.75"
- 8" Front Wheels & 12" Rear Wheels

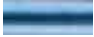
**OPTIONS**


- Travel Bag
- Flashlight Attachment
- Designer Mobility Bags



HCPCS # E1039

349

Item # 349B 

Item # 349R 

**FEATURES**

- Lightweight aluminum frame
- Flip-up desk arms
- Quick release fold-down back
- Locking rear wheels
- Non-skid foot plates & heel loops
- Foldable
- 19" Seat Height
- Back Height from Seat: 18"
- 8" Wheels

**OPTIONS**

- Travel Bag
- Flashlight Attachment
- Designer Mobility Bags



HCPCS # E1038

| Item # | Weight Capacity | Overall Weight | Width btw Arms | Arm Height from Seat | Seat Dimensions | Overall Dimensions     | Overall Folded Dimensions |
|--------|-----------------|----------------|----------------|----------------------|-----------------|------------------------|---------------------------|
| 332    | 400 lb          | 27.75 lb       | 22"            | 9.75"                | 21.5"w x 15.5"d | 38"h x 28.5"w x 30"d   | 38"h x 11"w x 30.5"d      |
| 349    | 300 lb          | 23 lb          | 19.25"         | 10"                  | 18.5"w x 15.5"d | 38.5"h x 25"w x 28.5"d | 30.5"h x 12.5"w x 26.75"d |

# ALUMINUM TRANSPORT CHAIRS

## 352

Item # 352B



### FEATURES

- Lightweight aluminum frame
- Flip-up desk arms
- Quick release fold-down back
- Hand brakes & Locking rear wheels
- Non-skid foot plates & heel loops
- Foldable
- 19.75" Seat Height
- Back Height from Seat: 17.75"
- 8" Front Wheels & 12" Rear Wheels

Item # 352R



### OPTIONS

- Travel Bag
- Flashlight Attachment
- Designer Mobility Bags



HCPCS # E1038

### ELEVATING LEGRESTS FOR WHEELCHAIR

Item # W-7001

- For 5000/6000/7000 Series



| Item # | Weight Capacity | Overall Weight | Width btw Arms | Arm Height from Seat | Seat Dimensions | Overall Dimensions      | Overall Folded Dimensions |
|--------|-----------------|----------------|----------------|----------------------|-----------------|-------------------------|---------------------------|
| 352    | 300 lb          | 27.5 lb        | 19.25"         | 10"                  | 18.5"w x 15.5"d | 38.25"h x 25.5"w x 31"d | 30.5"h x 12.5"w x 29.5"d  |

# STEEL WHEELCHAIRS

## 5060S & 5080S

### 16"/18" SEAT WIDTHS

5060S/5080S - Full arms with s/a footrests

5060SE/5080SE - Full arms with elevating leg rests

Alternative configurations of wheelchairs can be dropshipped

### FEATURES

Hammertone finish

Fixed full-length arms

Dual axle positions for seat height conv.

Includes back pocket

"Easy Adjust" foot riggings

Black vinyl upholstery

20" Seat Height

Back Height from Seat:

15" (5060) / 14.75" (5080S)



HCPCS # K0001

| Item # | Weight Cap. | Overall Weight | Width btw Arms | Arm Height from Seat | Seat Dimensions | Overall Dimensions       | Overall Folded Dimensions  |
|--------|-------------|----------------|----------------|----------------------|-----------------|--------------------------|----------------------------|
| 5060S  | 300 lb      | 34 lb          | 13.75"         | 9.5"                 | 16"w x 16"d     | 36"h x 23.25"w x 30.25"d | 36"h x 10.75"w x 29.75"d   |
| 5080S  | 300 lb      | 36 lb          | 15.75"         | 10"                  | 18"w x 16"d     | 36"h x 24.5"w x 31.25"d  | 35.5"h x 11.25"w x 30.25"d |

## 5165S & 5185S

### 16"/18" SEAT WIDTHS

5165S/5185S - Desk arms with s/a footrests

5165SE/5185SE - Desk arms with elevating leg rests

5166S/5186S - Full arms with s/a footrest

5166SE/ 5186SE - Full arms with elevating leg rests

Alternative configurations of wheelchairs can be dropshipped

### FEATURES

Hammertone finish

Detachable/reversible desk arms

Dual axle positions for seat height conv.

Includes back pocket

"Easy Adjust" foot riggings

Black vinyl upholstery

20" Seat Height

Back Height from Seat: 15.25"



HCPCS # K0001

| Item # | Weight Capacity | Overall Weight | Width btw Arms | Arm Height from Seat | Seat Dimensions | Overall Dimensions      | Overall Folded Dimensions   |
|--------|-----------------|----------------|----------------|----------------------|-----------------|-------------------------|-----------------------------|
| 5165S  | 300 lb          | 38 lb          | 16.25"         | 9"                   | 16"w x 16"d     | 35.25"h x 24"w x 31.5"d | 35.25"h x 12"w x 30.75"d    |
| 5185S  | 300 lb          | 39 lb          | 18.25"         | 9"                   | 18"w x 16"d     | 35.25"h x 26"w x 31.5"d | 35.25"h x 12.25"w x 30.75"d |

## 5160S & 5180S

### 16"/18" SEAT WIDTHS

5160S/5180S - Desk arms with s/a footrests  
 5160SE/5180SE - Desk arms with elevating leg rests  
 5161S/5181S - Full arms with s/a footrest  
 5161SE/ 5181SE - Full arms with elevating leg rests  
 Alternative configurations of wheelchairs can be dropshipped

### FEATURES

Hammertone finish  
 Detachable/reversible desk arms  
 Dual axle positions for seat height conv.  
 Includes back pocket  
 "Easy Adjust" foot riggings  
 Black nylon upholstery  
 20" Seat Height  
 Back Height from Seat: 15.25"



HCPCS # K0003

| Item # | Weight Cap. | Overall Weight | Width btw Arms | Arm Height from Seat | Seat Dimensions | Overall Dimensions        | Overall Folded Dimensions  |
|--------|-------------|----------------|----------------|----------------------|-----------------|---------------------------|----------------------------|
| 5160S  | 300 lb      | 33 lb          | 16.25"         | 9"                   | 16"w x 16"d     | 35.5"h x 24.25"w x 31.5"d | 35.25"h x 12.75"w x 30.5"d |
| 5180S  | 300 lb      | 33 lb          | 18.25"         | 9"                   | 18"w x 16"d     | 35.5"h x 26.25"w x 31.5"d | 35.25"h x 12.75"w x 30.5"d |

## 5200S

### 20" SEAT WIDTH

5200S - Desk arms with s/a footrests  
 5200SE - Desk arms with elevating leg rests  
 5201S - Full arms with s/a footrest  
 5201SE - Full arms with elevating leg rests  
 Alternative configurations of wheelchairs can be dropshipped

### FEATURES

Hammertone finish  
 Detachable/reversible desk arms  
 Dual axle positions for seat height conv.  
 Includes back pocket  
 "Easy Adjust" foot riggings  
 Black nylon upholstery  
 20" Seat Height  
 Back Height from Seat: 15.25"



HCPCS # K0003

| Item # | Weight Cap. | Overall Weight | Width btw Arms | Arm Height from Seat | Seat Dimensions | Overall Dimensions        | Overall Folded Dimensions |
|--------|-------------|----------------|----------------|----------------------|-----------------|---------------------------|---------------------------|
| 5200S  | 325 lb      | 33.5 lb        | 20.25"         | 9"                   | 20"w x 16"d     | 35.5"h x 28.25"w x 31.5"d | 35.25"h x 13"w x 30.5"d   |

# STEEL & LIGHTWEIGHT WHEELCHAIRS

## 5220S & 5240S

### 22"/24" SEAT WIDTHS

5220S/5240S - Desk arms with s/a footrests  
 5220SE/5240SE - Desk arms with elevating leg rests  
 5221S/5241S - Full arms with s/a footrest  
 5221SE/ 5241SE - Full arms with elevating leg rests  
 Alternative configurations of wheelchairs can be dropshipped

### FEATURES

Hammertone finish  
 Detachable/reversible desk arms  
 Dual axle positions for seat height conv.  
 Includes back pocket  
 "Easy Adjust" foot riggings  
 Black vinyl upholstery  
 20" Seat Height  
 Back Height from Seat: 15.25"



HCPCS # K0007

| Item # | Weight Cap. | Overall Weight | Width btw Arms | Arm Height from Seat | Seat Dimensions | Overall Dimensions      | Overall Folded Dimensions   |
|--------|-------------|----------------|----------------|----------------------|-----------------|-------------------------|-----------------------------|
| 5220S  | 350 lb      | 53 lb          | 22.75"         | 9"                   | 22"w x 18"d     | 36"h x 30.5"w x 33.75"d | 36.25"h x 12.75"w x 33.25"d |
| 5240S  | 425 lb      | 54 lb          | 24.75"         | 8.5"                 | 24"w x 18"d     | 36"h x 32.5"w x 33.75"d | 36.25"h x 13"w x 33.25"d    |

## 7160L & 7180L

### 16"/18" SEAT WIDTHS

7160L/7180L - Flip back desk arms with s/a footrests  
 7160LE/7180LE - Flip back desk arms w/ elevating leg rests  
 7161L/7181L - Flip back full arms with s/a footrests  
 7161LE/7181LE - Flip back full arms w/ elevating leg rests  
 Alternative configurations of wheelchairs can be dropshipped

### FEATURES

Hammertone finish  
 Flip back desk arms  
 Dual axle positions for seat height conv.  
 Includes back pocket  
 "Easy Adjust" foot riggings  
 Black nylon upholstery  
 Includes anti-tippers  
 20" Seat Height  
 Back Height from Seat: 16.25"



HCPCS # K0004

| Item # | Weight Cap. | Overall Weight | Width btw Arms | Arm Height from Seat | Seat Dimensions | Overall Dimensions        | Overall Folded Dimensions  |
|--------|-------------|----------------|----------------|----------------------|-----------------|---------------------------|----------------------------|
| 7160L  | 300 lb      | 32 lb          | 16.25"         | 10.5"                | 16"w x 16"d     | 36.25"h x 23.5"w x 31.5"d | 36.25"h x 11.75"w x 30.5"d |
| 7180L  | 300 lb      | 33 lb          | 17.75"         | 10.5"                | 18"w x 16"d     | 36.25"h x 25.5"w x 31.5"d | 36.25"h x 11.75"w x 30.5"d |

# LIGHTWEIGHT & RECLINING WHEELCHAIRS

## 7200L

### 20" SEAT WIDTH

7200L - Flip back desk arms with s/a footrests

7200LE - Flip back desk arms w/ elevating leg rests

7201L - Flip back full arms with s/a footrests

7201LE - Flip back full arms w/ elevating leg rests

Alternative configurations of wheelchairs can be dropshipped

### FEATURES

Hammertone finish

Flip back desk arms

Dual axle positions for seat height conv.

Includes back pocket

"Easy Adjust" foot riggings

Black nylon upholstery

Includes anti-tippers

20" Seat Height

Back Height from Seat: 16.25"



HCPCS # K0004

| Item # | Weight Cap. | Overall Weight | Width btw Arms | Arm Height from Seat | Seat Dimensions | Overall Dimensions        | Overall Folded Dimensions  |
|--------|-------------|----------------|----------------|----------------------|-----------------|---------------------------|----------------------------|
| 7200L  | 300 lb      | 33 lb          | 20.25"         | 10.5"                | 20"w x 16"d     | 36.25"h x 27.5"w x 31.5"d | 36.25"h x 11.75"w x 30.5"d |

## 6160S, 6180S & 6200S

### 16"/18"/20" SEAT WIDTHS

6160S - Recliner, detachable full arms, elevating leg rests

6180S - Recliner, detachable full arms, elevating leg rests

6200S - Recliner, detachable full arms, elevating leg rests

### FEATURES

Hammertone finish

Padded headrest

Detachable full arms

Reclines to full 180 degree position

Includes back pocket

"Easy Adjust" foot riggings

Flame retardant black vinyl upholstery

Includes anti-tippers

19.5" Seat Height

Back Height from Seat: 30"



HCPCS # K0001

| Item # | Weight Cap. | Overall Weight | Width btw Arms | Arm Height from Seat | Seat Dimensions | Overall Dimensions       | Overall Folded Dimensions  |
|--------|-------------|----------------|----------------|----------------------|-----------------|--------------------------|----------------------------|
| 6160S  | 300 lb      | 49 lb          | 16.25"         | 8.5"                 | 16"w x 18"d     | 48.75"h x 24.25"w x 36"d | 37.25"h x 11.75"w x 34.5"d |
| 6180S  | 300 lb      | 51 lb          | 18.25"         | 8.5"                 | 18"w x 18"d     | 48.75"h x 25.75"w x 36"d | 37.25"h x 11.75"w x 34.5"d |
| 6200S  | 300 lb      | 51 lb          | 20.25"         | 8.5"                 | 20"w x 18"d     | 48.75"h x 28.25"w x 36"d | 37.75"h x 12"w x 35.25"d   |

CHOOSE

*safety*

We use our bathrooms more than any other room in the house, so  
it's important to **be proactive** and **prevent falls**.



BATHROOM SAFETY

“

*Purchased a 9026 Bath Bench with Hand Held Shower extender with 5 settings so he is able to shower sitting down now ...*



*... he loves it! Life is great!* ”

- Real NOVA Fan

Wall Grab Bars 

8012-R - 8032-R

1.5" wall stand-off • 2.75" fixed flange • rubber gaskets  
1" diameter tubing • knurled grip (chrome only)

| Item #   | Description                |
|----------|----------------------------|
| 8012CH-R | 12" WALL GRAB BAR - CHROME |
| 8016CH-R | 16" WALL GRAB BAR - CHROME |
| 8018CH-R | 18" WALL GRAB BAR - CHROME |
| 8024CH-R | 24" WALL GRAB BAR - CHROME |
| 8032CH-R | 32" WALL GRAB BAR - CHROME |
| 8012PC-R | 12" WALL GRAB BAR - IVORY  |
| 8016PC-R | 16" WALL GRAB BAR - IVORY  |
| 8018PC-R | 18" WALL GRAB BAR - IVORY  |
| 8024PC-R | 24" WALL GRAB BAR - IVORY  |
| 8032PC-R | 32" WALL GRAB BAR - IVORY  |



Chrome



Ivory

Luxury Grab Bars 

8618-R & 8624-R

1.5" wall stand-off • 2.75" fixed flange • rubber gaskets  
1.25" bar diameter • textured hand grip

- Corrosion resistant
- Textured surface for improved grip
- Limited Lifetime Warranty
- Heavy duty steel handle with reinforced plastic flange
- Hardware included

| Item #  | Description                |
|---------|----------------------------|
| 8618B-R | 18" WALL GRAB BAR - BRONZE |
| 8618N-R | 18" WALL GRAB BAR - NICKEL |
| 8624B-R | 24" WALL GRAB BAR - BRONZE |
| 8624N-R | 24" WALL GRAB BAR - NICKEL |



Bronze



Nickel



Textured surface for improved grip



Steel reinforced plastic flange provides optimum strength



## Suction Cup Balance Assist Bar 8212-R

Retail  
Packaged

- Installs quickly; perfect for home or travel use
- Provides added support when entering and leaving a bath tub or shower
- Easy to attach and remove
- Secure suction indicator displays green for secure and red for not secure
- No tools required
- 5"l x 3.5"h



## Tub Grab Bar 8220-R

Retail  
Packaged

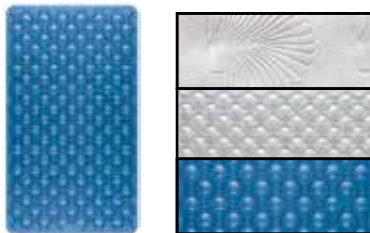
- Provides added support when entering and leaving a bath tub or shower
- Made of 1" powder coated steel tubing
- Rubber contact points
- Clamp adjusts from 3" - 6"w
- Dimensions: 19"h x 6"w
- Weight Capacity: 250 lb



## Bath Seat Cushion 9601B-R (Blue)/ 9601W-R (White)

Retail  
Packaged

- Adds comfort while bathing
- Non-slip Velcro strap prevents cushion from sliding
- Fits all standard sized bath seats
- Cushion dimensions: 15"w x 7"d



## Rubber Bath Mats 9350-R (White Shell) 9351W-R (White) 9351-R (Blue)

Retail  
Packaged

- Attaches securely to tub surface and helps prevent slipping
- Anti-fungal treated
- 15.75"w x 27.5"l



## Bath Seat Basket 9605-R

Retail  
Packaged

- Holds bath essentials conveniently within reach to avoid bending, turning and twisting
- Easily attaches to the seat frame with included hardware
- Fits all standard size bath seats with 7/8" or 1" tube diameter
- Coated steel wire is rust resistant
- Dimensions: 12"w x 4"h x 4"d
- Color: White



Holder for Hand Held Shower (9306-R),  
Bath Seat Cushion (9601B-R) and Bath  
Seat Basket (9605-R) on Bath Seat (9037)

# BATHROOM SAFETY



Retail  
Packaged

## Shower Diverter Valve 9305-R

- Designed to divert water between your shower head and hand-held shower



Retail  
Packaged

## Holder for Hand Held Shower 9306-R

- Attaches to most bath seat arms (3/4" diameter tube) or legs (1" diameter tube)
- Securely holds hand held shower in place for safety and convenience



Retail  
Packaged

## Suction Cup Showerhead Holder 8213-R

- Showerhead is in easy reach when seated or bathing children
- Suction cup can be quickly removed and relocated as often as you like
- Convenient when bathing pets or cleaning out the tub



9301-R

9311-R

Retail  
Packaged

## Hand Held Shower Set

9301-R (2 Function)  
9311-R (Deluxe 5 Function)

- Extra long 84" reinforced hose allows user to shower while seated
- On/Off switch allows for water flow control
- Includes wall mounting holder
- 5 Settings: Regular, Shower Spray, Massage, Water Drip, Shower Stop (9311-R only)



8214B-R

8214N-R

## Suction Cup Hook Holder

8214B-R (Bronze)  
8214N-R (Nickel)

NEW!

- Hook allows for hanging shower accessories within easy reach
- Easy to attach and remove



8216B-R



8216N-R

## Suction Cup Assist Bar

8216B-R (Bronze)  
8216N-R (Nickel)

NEW!

- Installs quickly; perfect for home or travel use
- Provides added support when entering and leaving a bath tub or shower
- Easy to attach and remove



## Bath/Shower Stool

9005

9006-R

Retail Packaged

- Great for use in small areas (9005)
- Great for travel and easy to store (9006-R)
- Tool-free assembly in minutes (9006-R)
- Adjustable height aluminum frame
- Latex-free rubber tips
- Available in brown box (9006)



## Deluxe Bath Seat with Arms & Back

9016 & 9026

- Arms provide support for sitting and rising
- Adjustable height aluminum frame
- Latex-free rubber tips
- Removable back (9026 only)



## Bath & Shower Seat with Arms & Back

9035-R & 9036-R

- Great for travel and easy to store
- Tool-free assembly in minutes
- Arms provide support for sitting & rising
- Adjustable height aluminum frame
- Latex-free rubber tips
- Available in brown box (9036)



## Bath Seat with Arms, Back & U-Shaped Cutout

9037

- U-shaped cutout for improved hygiene
- Great for travel and easy to store
- Tool-free assembly in minutes
- Arms provide support for sitting & rising
- Adjustable height aluminum frame
- Latex-free rubber tips

| Item # | Weight Capacity | Overall Weight | Width btw Arms | Seat Height     | Seat Dimensions | Overall Dimensions |
|--------|-----------------|----------------|----------------|-----------------|-----------------|--------------------|
| 9005   | 300 lb          | 4 lb           | -              | 13.75" - 19.75" | 12.5"w x 12.5"d | 14.5"w x 14.5"d    |
| 9006-R | 300 lb          | 5 lb           | -              | 15.5" - 20.25"  | 12.5"w x 12.5"d | 15"w x 15"d        |
| 9016   | 300 lb          | 5 lb           | 19.25"         | 16" - 21"       | 15.75"w x 13"d  | 21.5"w x 18.5"d    |
| 9026   | 300 lb          | 7 lb           | 19.25"         | 16" - 21"       | 15.75"w x 13"d  | 21.5"w x 19"d      |
| 9035-R | 300 lb          | 6 lb           | 19.25"         | 16" - 21"       | 15.75"w x 13"d  | 21.5"w x 18.5"d    |
| 9036-R | 300 lb          | 8 lb           | 19.25"         | 16" - 21"       | 15.75"w x 13"d  | 21.5"w x 19.5"d    |
| 9037   | 300 lb          | 7 lb           | 19.25"         | 16" - 21"       | 15.75"w x 13"d  | 21.5"w x 19.5"d    |



**Adjustable Bath Benches**  
9010 & 9020 with Removable Back

- Removable back (9020 only)
- Adjustable height aluminum frame
- Multiple drainage holes
- Latex-free rubber tips (40025GR)
- Built-in hand held shower holder



**Heavy Duty Bath Bench**  
9013 & 9023

- Adjustable height aluminum frame
- Built-in hand held shower holder
- Latex-free rubber tips
- Removable back (9023 only)



**Bath & Shower Seat**  
9121-R & 9101-R

- Great for travel and easy to store
- Tool-free assembly in minutes
- Built-in hand held shower holder
- Adjustable height aluminum frame
- Latex-free rubber tips
- Removable back (9101-R only)
- Available in brown box (9121, 9101)



**Hygienic Adjustable Bath Benches**  
9050 & 9060

- U-shaped design for cleaning purposes
- Adjustable height aluminum frame
- Latex-free rubber tips
- Removable back (9060 only)

| Item # | Weight Capacity | Overall Weight | Seat Height   | Seat Dimensions | Overall Dimensions |
|--------|-----------------|----------------|---------------|-----------------|--------------------|
| 9010   | 300 lb          | 5 lb           | 13.5" - 20.5" | 20"w x 12"d     | 20"w x 18.25"d     |
| 9020   | 300 lb          | 7 lb           | 13.5" - 20.5" | 20"w x 12"d     | 20"w x 19.5"d      |
| 9013   | 500 lb          | 5 lb           | 15.5" - 21.5" | 20"w x 12"d     | 20"w x 18.25"d     |
| 9023   | 500 lb          | 7 lb           | 15.5" - 21.5" | 20"w x 12"d     | 20"w x 19"-20.5"d  |
| 9121-R | 300 lb          | 6 lb           | 15.5" - 20.5" | 20"w x 12"d     | 20"w x 18"d        |
| 9101-R | 300 lb          | 6 lb           | 15.5" - 20.5" | 20"w x 12"d     | 20"w x 19.5"d      |
| 9050   | 300 lb          | 5 lb           | 14" - 21"     | 19"w x 12.75"d  | 20"w x 17.5"d      |
| 9060   | 300 lb          | 6 lb           | 14" - 21"     | 19"w x 12.75"d  | 20"w x 19.5"d      |



## Deluxe Adjustable Bath Benches 9120-R & 9100-R 9201-R (Red Safety Handle Only)

Retail  
Packaged

- Safety handle for extra support and balance can be attached to either side
- Built-in hand held shower holder
- Adjustable height aluminum frame
- Latex-free rubber tips
- Available in brown box (9120, 9100)



## Tub Shower Board with Red Safety Handle 9200

- Width Adjusts to attach securely to most bathtubs
- Built-in soap holder
- Rubber covered clamps resist slipping and protect surfaces from scratching



HEAVY DUTY  
**HD**

## Bath Seat with Back 9131-R

Retail  
Packaged

NEW!

- Tool-free assembly in under 5 minutes
- Ergonomic, oversized seat supports up to 500 lb
- Stylish and modern colors give a classic feel to your bath
- Slip-resistant rubber tips add stability
- Non-corrosive aluminum legs will not rust



## Swivel Bath Transfer Seat 9405

- Swivels 360 degrees and locks into four 90 degree positions
- Allows patient to be transferred into seat and swiveled into showering position
- Width between arms: 18.5"

| Item # | Weight Capacity | Overall Weight | Seat Height     | Seat Dimensions   | Overall Dimensions |
|--------|-----------------|----------------|-----------------|-------------------|--------------------|
| 9120-R | 300 lb          | 6 lb           | 14.75" - 20.75" | 19.75"w x 16.25"d | 19.5"w x 19"d      |
| 9100-R | 300 lb          | 8 lb           | 14.75" - 20.75" | 19.75"w x 16.25"d | 19.5"w x 19"d      |
| 9131-R | 500 lb          | 6 lb           | 15" - 19"       | 17"w x 14.5"d     | 19"w x 17.5"d      |
| 9200   | 250 lb          | 7 lb           | -               | 14.5"w x 14.5"d   | 31"l x 14.5"w      |
| 9405   | 250 lb          | 11 lb          | -               | 16"w x 15.75"d    | 20.75"w x 20.5"d   |

# BATHROOM SAFETY



**Foldable Shower Chair**  
**9400** with Back

- Great for travel/easy to store
- Folds and unfolds quickly
- U-shaped design for cleaning purposes
- Arms provide support for sitting and rising
- Adjustable height aluminum frame
- Latex-free rubber tips



**Shower Chair with Back**  
**9401**

- U-shaped design for cleaning purposes
- Arms provide support for sitting and rising
- Adjustable height aluminum frame
- Latex-free rubber tips



**Shower Stool with Arms**  
**9402**

- U-shaped design for cleaning purposes
- Arms provide support for sitting and rising
- Adjustable height aluminum frame
- Latex-free rubber tips



**Wall Mounted Shower Seat**  
**9404**

- Mounts directly to shower wall
- Saves space by folding up when not in use
- Includes wall mount anchors
- Adjustable height aluminum frame
- Latex-free rubber tips

| Item # | Weight Capacity | Overall Weight | Width Adj.  | Width btw Arms | Seat Height    | Seat Dimensions | Overall Dimensions |
|--------|-----------------|----------------|-------------|----------------|----------------|-----------------|--------------------|
| 9400   | 250 lb          | 9 lb           | -           | 19"            | 17.75" - 20.5" | 16"w x 15.75"d  | 20.75"w x 20.5"d   |
| 9401   | 250 lb          | 9 lb           | -           | 19"            | 17.75" - 20.5" | 16"w x 15.75"d  | 21.5"w x 20.5"d    |
| 9402   | 250 lb          | 7 lb           | -           | 19"            | 17.75" - 20.5" | 16"w x 15.75"d  | 21.25"w x 17.25"d  |
| 9404   | 250 lb          | 7 lb           | 5" (folded) | -              | -              | 16"w x 15.75"d  | 18.5"w x 19.5"d    |



**Deluxe Transfer Bench with Back  
9070**

- Built-in soap holder and hand held shower holder
- Converts easily for left or right hand transfers
- Adjustable height aluminum frame
- Latex-free rubber tips & suction tips



**Transfer Bench  
9071 with Back**

- Converts easily for left or right hand transfers
- Adjustable height aluminum frame
- Latex-free rubber tips & suction tips



**Portable Bath Transfer Bench  
9072-R**

**Retail  
Packaged**

- Tool-free assembly in minutes
- Converts easily for left or right hand transfers
- Adjustable height aluminum frame
- Latex-free rubber tips & suction tips
- Great for travel and easy to store
- Available in brown box (9072)



**Padded Transfer Bench/Commode  
9073**

- Converts easily for left or right hand transfers
- Removable seat for easy cleaning
- Bucket and lid included
- Adjustable height aluminum frame
- Latex-free rubber tips & suction tips

| Item # | Weight Capacity | Overall Weight | Seat Height   | Seat Dimensions | Overall Dimensions |
|--------|-----------------|----------------|---------------|-----------------|--------------------|
| 9070   | 300 lb          | 11 lb          | 18.5" - 23"   | 31.5"w x 14.5"d | 33.5"w x 19.5"d    |
| 9071   | 300 lb          | 11 lb          | 17" - 21"     | 27"w x 16.5"d   | 31"w x 21.5"d      |
| 9072-R | 300 lb          | 10 lb          | 17.75"-21.75" | 27"w x 16.25"d  | 30.50"w x 21.25"d  |
| 9073   | 300 lb          | 11 lb          | 19" - 23"     | 27"w x 14"d     | 36"w x 19.5"d      |

# BATHROOM SAFETY



## Heavy Duty Transfer Bench 9075

- Converts easily for left or right hand transfers
- Adjustable height aluminum frame
- Latex-free rubber tips & suction tips



## Padded Transfer Bench 9080 with Back

- Padded seat and back add comfort when bathing
- Converts easily for left or right hand transfers
- Adjustable height aluminum frame
- Latex-free rubber tips & suction tips



## Male Urinal Bag PA-1081

Retail  
Packaged

- Hygienic bag with super-absorbent pad
- Quickly transitions body fluids into a gel
- Eliminates odors, spills, splashes and the need for hand-cleaning



## CareBag Commode Liner PA-1080

Retail  
Packaged

- Medical grade bag containing a super absorbent pad that quickly transitions body fluids into a gel, thus completely eliminating any odors, spills & splashes
- Provides convenience & safety for Patient, Caregiver & Family
- No more hand-cleaning of soiled pail
- No handling of feces or urine
- Eliminates odor from bodily waste
- Convenient drawstring closure for easier cleanup
- Pad absorbs 17 oz. of body fluids

| Item # | Weight Capacity | Overall Weight | Seat Height     | Seat Dimensions | Overall Dimensions |
|--------|-----------------|----------------|-----------------|-----------------|--------------------|
| 9075   | 500 lb          | 17.5 lb        | 16.75" - 21.75" | 27"w x 16.25"d  | 30.75"w x 21.5"d   |
| 9080   | 300 lb          | 11 lb          | 17.5" - 21.5"   | 23.5"w x 16"d   | 31.5"w x 23"d      |



## Bucket, Lid, and Splash Guard 8450B & 8450S

- **8450B** - Bucket and lid for 8450 Bedside Commode
- **8450S** - Splash Guard for 8450 Bedside Commode
- Overall Dimensions: 13"w x 8"h



## 3-in-1 Commode 8450 with Back

- Can be used beside the bed and over the toilet as a raised toilet seat with arms
- Adjustable height steel frame
- Bucket, lid, and splash guard included
- Toilet seat opening: 8.5"w x 9.5"d



## Folding Commode 8700-R

**Retail  
Packaged**

- Can be used beside the bed and over the toilet as a raised toilet seat with arms
- Ideal for travel: folds and unfolds in seconds
- Adjustable height steel frame
- Bucket, lid, and splash guard included
- Toilet seat opening: 8"w x 9.5"d
- Available in brown box (8700) and packed as single (8700-S)



*Updated 8805  
model available  
July 2018*

## Drop-Arm Transport Chair Commode 8805

- Arms drop for easy patient transfer
- 4" swivel wheels with locking casters
- Padded seat fits over commode and converts into transport chair
- Bucket & lid included
- Removable, swing away footrests
- Bucket can be removed without lifting user or raising seat
- NOT FOR USE IN SHOWER
- Toilet Seat Opening: 9"w x 10"d

| Item # | Weight Cap. | Overall Weight | Width btw Arms | Seat Height        | Seat Dimensions   | Overall Dimensions |
|--------|-------------|----------------|----------------|--------------------|-------------------|--------------------|
| 8450   | 350 lb      | 11 lb          | 17.75"         | 16.25" - 22.25"    | 13.25"w x 14.25"d | 25.25"w x 18.75"d  |
| 8700-R | 300 lb      | 14 lb          | 18"            | 15.5" - 21.5"      | 113.5"w x 16"d    | 22"w x 22"d        |
| 8805   | 250 lb      | 29 lb          | 18"            | 19" (20.5" w/ pad) | 17.25"w x 17"d    | 19.5"w x 23"d      |

# BATHROOM SAFETY



**Heavy Duty Commode**  
**8580**

- Extra-large seat provides added support
- Bucket and lid included
- Adjustable height steel frame
- Toilet seat opening: 9.5"w x 11"d



**Heavy Duty Transfer Commode**  
**8582**

- Extra-large seat provides added support
- Bucket, lid, and splash guard included
- Adjustable height steel frame
- Toilet Seat Opening: 8.75"w x 10.5"d



**Heavy Duty Transfer Commode**  
**8583** with Drop-Arm

- Arms drop for easy patient transfer
- Extra-large seat provides added support
- Bucket and lid included
- Adjustable height steel frame
- Toilet Seat Opening: 8.75"w x 10.25"d



**Heavy Duty Transfer Commode**  
**8590** with Drop-Arm

- Arms drop for easy patient transfer
- Extra-large seat provides added support
- Bucket and lid included
- Toilet Seat Opening: 10"w x 13"d

| Item # | Weight Capacity | Overall Weight | Width btw Arms | Seat Height     | Seat Dimensions   | Overall Dimensions |
|--------|-----------------|----------------|----------------|-----------------|-------------------|--------------------|
| 8580   | 450 lb          | 23 lb          | 26.5"          | 19.25" - 23"    | 23"w x 18.25"d    | 34"w x 25"d        |
| 8582   | 500 lb          | 18 lb          | 23"            | 16.25" - 23.25" | 23.25"w x 17.75"d | 26.75"w x 24"d     |
| 8583   | 500 lb          | 22 lb          | 24.25"         | 19.5"           | 22.75"w x 18.25"d | 26.75"w x 24"d     |
| 8590   | 800 lb          | 33 lb          | 25.25"         | 18.5"           | 25.75"w x 21"d    | 29.25"w x 23.75"d  |



**Shower Chair/Commode  
8800**

- Waterfall armrests and padded seat
- 4" rust-resistant swivel wheels with locking casters
- Bucket and lid included
- Improved design reduces gap between seat and bucket and allows for easy slide-in/slide-out of bucket
- Toilet seat opening: 8.75"w x 10.5"d



**Deluxe Shower Chair / Commode  
8801**

- Waterfall armrests and padded seat
- 4" swivel wheels with locking casters
- Bucket and lid included
- Removable, swing away footrests
- Toilet seat opening: 8.75"w x 10.5"d



**Drop-Arm Commode  
8900W**

- Arms drop for easy patient transfer
- Bucket, lid, and splash guard included
- Available in Gray and Chrome
- Adjustable height steel frame
- Toilet seat opening: 8"w x 9.75"d



**Padded Drop-Arm Commode  
8901W**

- Arms drop for easy patient transfer
- Padded seat and backrest
- Bucket, lid, and splash guard included
- Adjustable height steel frame
- Toilet seat opening: 8.25"w x 11"d

| Item # | Weight Capacity | Overall Weight | Width btw Arms | Seat Height     | Seat Dimensions | Overall Dimensions      |
|--------|-----------------|----------------|----------------|-----------------|-----------------|-------------------------|
| 8800   | 250 lb          | 17 lb          | 18.5"          | 21.5"           | 16"w x 16"d     | 22"w x 24.75"           |
| 8801   | 250 lb          | 22 lb          | 18.5"          | 19"             | 16"w x 16"d     | 22"w x 25.25"d          |
| 8900W  | 300 lb          | 20.5 lb        | 18"            | 18.75" - 22.75" | 13.5"w x 16"d   | 23"w x 20.5" - 21.5"d   |
| 8901W  | 300 lb          | 21.5 lb        | 18.5"          | 20" - 24"       | 16.5"w x 16.5"d | 22.5"w x 20.5" - 22.5"d |

# BATHROOM SAFETY



## 5" Raised Toilet Seat 8340-R

Retail  
Packaged

- Adds 5" to the height of the toilet seat to aid in sitting and rising
- Non-locking
- Extra large seating surface
- Rubber pads help prevent seat from moving
- Available in brown box (8340)



## Toilet Seat Elevators 8341-R & 8342-R (No Hinges) 8345-R & 8346-R (Hinged)

Retail  
Packaged

- No hinges: 8341-R (Elongated), 8342-R (Standard)
- Hinged: 8345-R (Standard), 8346-R (Elongated)
- Bolts directly to the toilet for added safety
- Adds 3.5" to the height of the toilet seat to aid in sitting and rising
- Allows the original seat and lid to be used
- Installs easily
- Available in brown box (8341, 8342, 8345, 8346)



## Toilet Seat Riser with Arms 8343-R & 8344-R

Retail  
Packaged

- 8343-R (Elongated), 8344-R (Standard)
- Bolts directly to the toilet for added safety
- Adds 3.5" to the height of the toilet seat to aid in sitting and rising
- Allows the original seat and lid to be used
- Installs easily (all hardware included)



## 5" Locking Raised Toilet Seat 8350-R

Retail  
Packaged

- Adds 5" to the height of the toilet seat to aid in sitting and rising
- Front locking mechanism for easy installation
- Available in brown box (8350)
- Fits most standard and elongated toilets

| Item # | Weight Capacity | Overall Weight | Width btw Arms | Aperture Dimensions | Seat Height | Overall Dimensions |
|--------|-----------------|----------------|----------------|---------------------|-------------|--------------------|
| 8340-R | 300 lb          | 3 lb           | -              | 8.25"w x 10"d       | 5.25"       | 17.25"w x 17"l     |
| 8341-R | 300 lb          | 3 lb           | -              | 10"w x 13.5"d       | 3.5"        | 13.75"w x 19.25"l  |
| 8342-R | 300 lb          | 3 lb           | -              | 10"w x 11.5"d       | 3.5"        | 13.25"w x 17"l     |
| 8345-R | 300 lb          | 3 lb           | -              | 9.5"w x 11.25"d     | 3.5"        | 13.5"w x 17"l      |
| 8346-R | 300 lb          | 3 lb           | -              | 10.5"w x 14d"       | 3.5"        | 14.25"w x 19.25"l  |
| 8343-R | 300 lb          | 4 lb           | 18"            | 10.25"w x 13"d      | 3.5"        | 20.5"w x 19.25"d   |
| 8344-R | 300 lb          | 3.5 lb         | 18"            | 9.5"w x 11"d        |             | 20.5"w x 17.25"d   |
| 8350-R | 300 lb          | 4 lb           | -              | 9.5"w x 9.5"d       | 5"          | 15.75"w x 16"l     |



Retail  
Packaged

## Raised Toilet Seat with Detachable Arms 8351-R

- Adds 5" to the height of the toilet seat to aid in sitting and rising
- Padded arms provide support for sitting and rising
- Front locking mechanism for easy installation
- Available in brown box (8351)
- Fits most standard and elongated toilets



Retail  
Packaged

## 5" Locking Raised Toilet Seat 8352-R

- Adds 5" to the height of the toilet seat to aid in sitting and rising
- Front locking mechanism for easy installation
- Available in brown box (8352)
- Fits most standard and elongated toilets



Retail  
Packaged

## 5" Raised Toilet Seat 8353-R

- Adds 5" to the height of the toilet seat to aid in sitting and rising
- Padded arms provide support for sitting and rising
- Front locking mechanism for easy installation
- Available in brown box (8353)
- Fits most standard and elongated toilets



Retail  
Packaged

## Padded Toilet Seat Riser 2629-R (2") & 2630-R (4")

- High density foam minimizes pressure on sensitive areas
- Attaches easily to toilet seat with four adjustable Velcro straps to reduce shifting
- Easy to clean vinyl surface
- Fits most toilet seats

| Item # | Weight Capacity | Overall Weight | Width btw Arms | Aperture Dimensions | Overall Dimensions        |
|--------|-----------------|----------------|----------------|---------------------|---------------------------|
| 8351-R | 300 lb          | 5.5 lb         | 17.5"-19.5"    | 9.5"w x 9.5"d       | 21.5"w x 16"l x 12"d      |
| 8352-R | 300 lb          | 5 lb           | -              | 8.25"w x 9.5"d      | 20.5"w x 17.5"l x 5"d     |
| 8353-R | 300 lb          | 6 lb           | 18"            | 8.25"w x 9.5"d"     | 20.5"w x 17.5"l x 10.75"d |
| 2629-R | 250 lb          | 4.45 lb        | -              | -                   | 13.5"w x 2"h x 15.75"d    |
| 2630-R | 250 lb          | 6.35 lb        | -              | -                   | 13.5"w x 4"h x 15.75"d    |

# BATHROOM SAFETY



**Toilet Seat Riser Easy Air Padded**  
2628A-R

Retail  
Packaged

- Adds cushion and up to 2" of elevation to your toilet seat, providing comfort, and aids getting on and off the toilet
- Adjustable air foam combination provides variable pressure relief
- Air release valve easily adjusts to your individual comfort
- Automatically re-inflates with no pump required
- Easily attaches to your toilet seat with loop straps



**Toilet Safety Rails**  
8200-R

Retail  
Packaged

- One piece mounting flange for easy width adjustment
- Rails bolt securely to the toilet
- Waterfall armrest
- Available in brown box (8200)



**Toilet Support Rails**  
8201-R

Retail  
Packaged

- Provides added stability when sitting and rising
- Frame bolts directly to toilet for easy installation
- Cushioned, easy to clean foam armrests
- Adjusts to fit standard and elongated toilets



**Toilet Safety Support Frame**  
8205-R

Retail  
Packaged

- Freestanding frame features slip-resistant base
- Padded foam handles add stability when sitting and rising
- For use with both standard and elongated toilets
- Includes convenient magazine rack for reading material
- Easy, tool-free assembly

| Item #  | Weight Capacity | Overall Weight | Width btw Arms | Arm Height Adjustment | Overall Dimensions        |
|---------|-----------------|----------------|----------------|-----------------------|---------------------------|
| 2628A-R | 250 lb          | -              | -              | -                     | 15.75"w x 14"d x 2"h      |
| 8200-R  | 250 lb          | 3 lb           | 21" - 24"      | 25.75" - 29.75"       | -                         |
| 8201-R  | 300 lb          | 4 lb           | 16.5" - 19"    | 11.5"                 | 23.25"w x 16.5"d x 11.5"h |
| 8205-R  | 300 lb          | -              | 20.25"         | 25.5"                 | 29.75"w x 19"d x 25.5"h   |

# PREVENT FALLS



DID YOU KNOW?

**60%** of falls occur at home, with the majority occurring in the bathroom.

Be **proactive**  
& equip your bathroom with ...



**Hot Spot**  
**SOLUTIONS**  
by 

## *Hot Spot #1*

GET SOME LEVERAGE



## *Hot Spot #2*

GETTING IN AND OUT OF THE TUB



## *Hot Spot #3*

BATHING INDEPENDENTLY



# CHOOSE *comfort*

Whether you're **sitting, lounging or sleeping**, cushions are an essential part of everyday life.



## CUSHIONS

“

*I'm a quadriplegic and can't afford spending \$300+ on a new cushion.*

*My old cushion was falling apart ...*



*... and needed a replacement that wouldn't break the bank. **Best \$39.95***

***I've ever spent.** ”*

**- Real NOVA Fan**



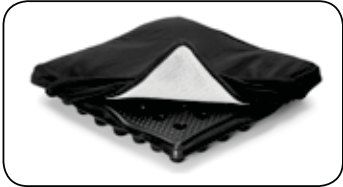
Comfort-Tech Wheelchair Seat Cushion

Retail  
Packaged

- Comfortable, contoured surface allows for better weight distribution and reduces peak pressures on the pelvis by 70%
- Helps maintain upright pelvic posture and spinal alignment
- Patented port and pillar design allows airflow to control temperature and moisture to the skin
- Durable, closed-cell EVA foam is completely waterproof and is heat resistant to 158° F for easy cleaning
- Breathable slip-on cover allows for airflow
- Weight Capacity: 300 lb



| Item #   | Description |
|----------|-------------|
| BJCTK006 | 16" x 16"   |
| BJCTK007 | 18" x 16"   |
| BJCTK009 | 20" x 16"   |
| BJCTK008 | 18" x 18"   |
| BJCTK010 | 20" x 18"   |



Comes with breathable cover

Ergo-Tech Wheelchair Seat Cushion

Retail  
Packaged

Item #: BJETK001

- Comfortable, contoured surface allows for better weight distribution and reduces peak pressures on the pelvis by 70%
- Helps maintain upright pelvic posture and spinal alignment
- Patented port and pillar design allows airflow to control temperature and moisture to the skin
- Durable, closed-cell EVA is completely waterproof and is heat resistant to 180° F for easy cleaning
- Breathable zippered cover that allows for airflow
- Dimensions: 18"w x 16"d x 3"h
- Weight capacity: 300 lb



Comes with breathable cover



## Sitz Right Seat Cushion

Retail  
Packaged

Item # BJSTZ001

- Contoured design encourages proper sitting posture
- Patented port and pillar design allows airflow to control temperature and moisture to the skin
- Multiple pillar heights eliminate peak pressures on your sitz bones
- Durable, closed-cell EVA is completely waterproof and dishwasher safe
- Dimensions: 18"w x 14"d x 4"h
- Weight Capacity: 300 lb



## Sit Smart Posture Plus

Retail  
Packaged

- Provides lumbar support, lower back pain relief, and corrects spine posture
- Perfect sciatica relief cushion for sciatica pain
- Waterproof EVA foam covering for indoor or outdoor use
- Easy for travel
- Works as a car seat cushion and office chair cushion
- Dimensions: 11.25"w x 14"d x 4"h
- Weight Capacity: 300 lb



| Item #   | Description |
|----------|-------------|
| BJPPS001 | Black       |
| BJPPS002 | Blue        |
| BJPPS056 | Red         |

## Bath Seat Cushion

Retail  
Packaged

Item #: BJBTH001

- Contoured design cradles the pelvis so it remains upright in proper alignment, reducing stress on the lower back
- Port and Pillar distributes weight and reduces peak pressures by 61%
- Durable, closed-cell EVA is completely waterproof and is heat resistant to 158° F for easy cleaning
- Dimensions: 18"w x 12"d x 2.5"
- Weight Capacity: 300 lb



## Kneeler

Retail  
Packaged

Item #: KNLER002

- Delivers superior comfort to your knees on the hardest of surfaces
- Ergonomic design minimizes the pain of kneeling
- Great for gardening, kneeling by bathtub, DIY projects
- Dimensions: 17"w x 9"d x 2"h



# CUSHIONS

## Foam Wheelchair Cushion

Retail  
Packaged

Item # 2664-3

- Helps equalize pressure and reduce soreness
- Great for wheelchairs, transport chairs, or home and office seating comfort
- Made of High-Density Foam
- Black 100% cotton cover is removable, washable and waterproof
- Weight Capacity: 250 lb
- 12 Month Limited Warranty against defects in workmanship
- Dimensions: 18"w x 16"d x 3"h



## Gel/Foam Wheelchair Cushion

Retail  
Packaged

2601

- Gel/Foam combination provides the user excellent weight distribution and even pressure relief
- Black cover is removable and washable (made of a PU/ polyester blend top and DOP/PVC blend bottom)
- Great for wheelchairs, transport chairs, or home and office seating comfort
- Weight Capacity: 250 lb
- 1 Year Limited Warranty against defects in workmanship
- Dimensions: 16"w x 16"d x 3"h (for 16" wide)  
18"w x 16"d x 3"h (for 18" wide)



HPCPS # E2601

| Item #      | Description                                  |
|-------------|--|
| 2601-2-1616 | 2" Gel foam cushion for 16" x 16" wheelchair |
| 2601-2-1816 | 2" Gel foam cushion for 18" x 16" wheelchair |
| 2601-2-2016 | 2" Gel foam cushion for 20" x 16" wheelchair |
| 2601-3-1616 | 3" Gel foam cushion for 16" x 16" wheelchair |
| 2601-3-1816 | 3" Gel foam cushion for 18" x 16" wheelchair |
| 2601-3-2016 | 3" Gel foam cushion for 20" x 16" wheelchair |

## Gel/Foam Wheelchair Cushion

Retail  
Packaged

2604

- Gel/Foam combination provides the user excellent weight distribution and even pressure relief
- Black cover is removable and washable (made of a PU/ polyester blend top and DOP/PVC blend bottom)
- Great for wheelchairs, transport chairs, or home and office seating comfort
- Weight Capacity: 400 lb
- 1 Year Limited Warranty against defects in workmanship
- Dimensions: 22"w x 18"d x 3"h (for 22" wide)  
24"w x 18"d x 3"h (for 24" wide)



HPCPS # E2604

| Item #      | Description                                  |
|-------------|--|
| 2604-3-2218 | 3" Gel foam cushion for 22" x 18" wheelchair |
| 2604-3-2418 | 3" Gel foam cushion for 24" x 18" wheelchair |

## Gel/Foam Coccyx Wheelchair Cushion

2603

Retail  
Packaged

- Gel/Foam combination provides the user excellent weight distribution and even pressure relief
- Great for wheelchairs, transport chairs, or home and office seating comfort
- Black cover is removable and washable (made of a PU/polyester blend top and DOP/PVC blend bottom)
- Weight Capacity: 250 lb
- 1 Year Limited Warranty against defects in workmanship
- Dimensions: 16"d x 16"w x 3"h (for 16" wide)  
16"d x 18"w x 3"h (for 18" wide)



Coccyx (tailbone) u-cutout reduces pressure on the tailbone and spine

| Item #       | Description                                  |
|--------------|--|
| 2603C-3-1616 | 3" Gel foam cushion for 16" x 16" wheelchair |
| 2603C-3-1816 | 3" Gel foam cushion for 18" x 16" wheelchair |
| 2603C-3-2016 | 3" Gel foam cushion for 20" x 16" wheelchair |
| 2603C-3-2018 | 3" Gel foam cushion for 20" x 18" wheelchair |

## Foam Coccyx Cushion

Retail  
Packaged

Item # 2654C-3

(3" Foam coccyx cushion for 18"w x 16"d wheelchair - with cover)

- Coccyx (tailbone) u-cutout reduces pressure on the tailbone and spine
- Helps equalize pressure and reduce soreness
- Great for wheelchairs, transport chairs, or home and office seating comfort
- Made of High-Density Foam
- Black cover is removable and washable (made of a PU/polyester blend)
- Weight Capacity: 250 lb
- 1 Year Limited Warranty against defects in workmanship



# CUSHIONS

## Gel/Foam Seat Cushions

Retail  
Packaged

NEW!

Item # 2601F-R

Item # 2603CF-R (with Coccyx Cutout)

- Plush fleece cover keeps user cool during summer months and warm during winter months
- Great for home or office
- Gel/Foam combination provides pressure relief, prevents minor skin irritations and improves weight distribution
- Cushion gives maximum comfort and therapeutic relief for long periods of sitting
- Non-skid bottom with velcro straps secure cushion to wheelchairs or chairs
- Black cover is removable and washable (made of a polyester/acrylic blend top, PU/polyester blend middle and DOP/polyester blend bottom)
- Coccyx cutout reduces pressure on the tailbone and spine (2603CF-R only)
- Dimensions: 18" w x 16" d x 3" h
- Weight Capacity: 250 lb



Item # 2601F-R



Item # 2603CF-R

## Convolutured "Egg Crate" Wheelchair Cushions

2650-3/2651-3/2652-3

Retail  
Packaged

- Provides support and pressure relief
- Great for wheelchairs, transport chairs, or home and office seating comfort
- Convolutured foam improves weight distribution and air circulation
- Navy blue polyester/cotton blend cover is removable and washable (2651-3 & 2652-3 only)
- Weight Capacity: 250 lb
- 3" high
- 12 Month Limited Warranty against defects in workmanship

Item # 2650-3



Item #'s  
2651-3 & 2652-3

| Item # | Description            |
|--------|------------------------|
| 2650-3 | w/out cover, 18" x 16" |
| 2651-3 | 18" x 16"              |
| 2652-3 | 16" x 16"              |

## Convolutd “Egg Crate” Seat/Back Foam Cushion with Cover

2658-3



- Provides support and pressure relief
- Convolutd (egg-crate) foam improves weight distribution and air circulation
- 3” seat cushion with connected 2” thick back fits most chairs and wheelchairs
- Cover is removable and washable (made of a polyester/cotton blend with a polyester/acrylic fleece top)
- Weight Capacity: 250 lb
- 1 Year Limited Warranty against defects in workmanship



## Back Foam Wheelchair Cushion

with Lumbar Support & Stabilization Board



2611BK/2612BK

- Curved profile fits natural back contours
- Stabilization board prevents wheelchair sling back from “hammocking”
- Great for wheelchairs, transport chairs, or home and office seating comfort
- Nylon straps securely position cushion to seating surface
- Black cover is removable and washable (made of a PU/ polyester blend top and DOP/PVC blend bottom)
- Weight Capacity: 250 lb (2611BK) & 400 lb (2612BK)
- 1 Year Limited Warranty against defects in workmanship



HCPCS # E2611 (for 2611BK)  
HCPCS # E2612 (for 2612BK)

| Item #    | Dimensions                                   |
|-----------|--|
| 2611BK-16 | 16”w x 2.75”d x 16.25”h (for 16” wide chair) |
| 2611BK-18 | 18”w x 2.75”d x 16.25”h (for 18” wide chair) |
| 2612BK-22 | 22”w x 2.75”d x 16.25”h (for 22” wide chair) |
| 2612BK-24 | 24”w x 2.75”d x 16.25”h (for 24” wide chair) |

## Wedge Cushion

Retail  
Packaged

Item # 2647C-R (Foam)

- Coccyx (tailbone) u-cutout reduces pressure on the tailbone and spine
- Wedge angle encourages pelvic tilt to reduce pressure on lumbar discs and promote better posture
- Convenient carry strap for easy transport
- Cover is made of 100% polyester and is removable and washable
- Dimensions: 16.5"w x 16.5"d x 4"h



Item # 2647C-R  
Wedge Cushion

## Car Cush

Retail  
Packaged

Item # 2647CG-R (Gel/Foam)

- Coccyx (tailbone) u-cutout reduces pressure on the tailbone and spine
- Wedge angle encourages pelvic tilt to reduce pressure on lumbar discs and promote better posture
- Convenient carry strap for easy transport
- Cover is made of 100% polyester and is removable and washable
- Dimensions: 15.5"w x 13"d x 3"h



Item # 2647CG-R  
Car Cush



## Easy Air Wedge



### Car Cush

Item # 2648A-R

- Adjustable air wedge with coccyx cutout reduces pressure on lumbar discs, tail bone and spine
- Automatically re-inflates with no pump required
- Air release valve allows the cushion to be custom fit
- Great for car, home, office and sporting events
- Washable, zippered, breathable navy blue mesh cover
- Dimensions: 16.5"w x 13"d
- Weight Capacity: 250 lb



## Easy Air Seat Cushion



Item # 2618A-R

- Lightweight adjustable air foam combination provides variable pressure relief
- Air release valve allows the cushion to be custom fit
- Automatically re-inflates with no pump required
- Breathable mesh cover is removable and washable
- Great for home, office and sporting events
- Dimensions: 18"w x 16"d x 3"h
- Weight capacity: 250 lb



Adjustable nozzle



## Memory Foam Coccyx Cushion



Item # 2655C

- Coccyx (tailbone) u-cutout reduces pressure on the tailbone & spine
- Memory foam conforms to the body contours
- Anatomic design helps maintain correct posture and stability while seated
- Soft and luxurious charcoal blue Velour™-like fabric cover is removable and washable
- Weight Capacity: 250 lb
- Dimensions: 16.75"w x 14.75"d x 2.5"h



# CUSHIONS

## Waffle Air Seat Cushion

Retail  
Packaged

Item # 2619A-R

- Great for travel or everyday use at home, office or sporting events
- Easy to quickly inflate and deflate (pump included)
- Adjustable density allows the cushion to be custom fit
- Helps in the comfort and prevention of pressure ulcers
- Reduces pressure to the back, hips and buttocks when sitting
- Grey nylon material is easy to clean with a damp cloth
- Dimensions: 17"w x 17"d
- Weight capacity: 225 lb

NEW!



## Seat Foam Comfort Rings

Retail  
Packaged

Item # 2670-R (Convuluted Foam)

Item # 2671-R (Regular Foam, Fleece Cover)

- Convuluted foam provides improved air circulation (2670-R only)
- Conforms to the body contours to provide comfort and support when sitting for long periods of time
- Aids in the prevention of pressure sores
- Black and fleece polyester/cotton blend covers are removable and washable
- Fleece cover for additional comfort (2671-R only)
- Dimensions: 16"w x 12.57"d x 2.75"h
- Weight capacity: 250 lb



Item # 2670-R



Item # 2671-R

## Seat Molded Foam Comfort Rings

Retail  
Packaged

2672/2673/2674

- Molded, high compression polyurethane foam
- Conforms to the body contours to provide comfort and support when sitting for long periods of time
- Aids in the prevention of pressure sores
- Blue and plaid polyester/cotton blend covers are removable and washable
- Weight capacity: 250 lb



| Item #  | Description | Dimensions                 |
|---------|-------------|----------------------------|
| 2672-R  | Blue        | 15"w x 12.5"d x 2.25"h     |
| 2672P-R | Plaid       | 15"w x 12.5"d x 2.25"h     |
| 2673-R  | Blue        | 16"w x 12.5"d x 2.75"h     |
| 2673P-R | Plaid       | 16"w x 12.5"d x 2.75"h     |
| 2674-R  | Blue        | 18.25"w x 14.75"d x 2.75"h |
| 2674P-R | Plaid       | 18.25"w x 14.75"d x 2.75"h |

## Swivel Seat Cushion

Retail  
Packaged

Item # 2640-R

- 360-degree, rotating base aids in transitioning in and out of the car
- Foam core provides extra padding while seated in car
- Designed to fit any car seat
- Blue-grey soft quilted top can be wiped down to clean
- Dimensions: 17.5"w x 1.5"h
- Weight capacity: 250 lb



## Padded Swivel Seat Cushion

Retail  
Packaged

Item # 2641-R

- Provides pressure relief for back and hips while seated
- 360-degree, rotating, non-skid base turns any chair into a swivel chair
- Great for transitioning on and off chairs
- 2" thick cushion provides support and comfort
- Dimensions: 15.5"w x 2"h
- Weight capacity: 225 lb



## Inflatable Rubber Cushion

Retail  
Packaged

Item # 2701-R

- 16"w x 3.5"h

Item # 2702-R

- 18"w x 3.5"h



- Helps to relieve lower back and tailbone discomfort
- Helps to prevent ulcers and the discomfort from hemorrhoids or episiotomies
- Conforms to the body contours to provide comfort and support when sitting for long periods of time
- Easily inflates with a bicycle style pump and deflates to desired firmness with metal twist valve
- Cleans easily with a damp cloth
- Made of durable heavy-gauge natural rubber
- Weight capacity: 250 lb



# CUSHIONS

## Back Cushion With Hot/Cold Pack

Retail  
Packaged

Item # 2665-R

- Innovative back cushion comes with reusable Hot/Cold Pack insert for the ultimate support as well as soothing, healing comfort
- Contoured back cushion is made of foam, great for everyday use and can be used without the Hot/Cold Pack
- Hot/Cold Pack can be used in microwave to heat and freezer to cool
- Comes with adjustable strap to secure the cushion to a chair or car seat
- Black polyester cover is zipper removable and washable
- Dimensions: 14"w x 13"h



Use with padded insert, Hot/Cold Pack, both or neither!

## Back Lumbar Cushion

Retail  
Packaged

Item # 2679BL-R

- Standard foam provides customized comfort for your lower back
- Improves spine alignment and alleviates back tension
- Polyester/cotton blend covers are removable and washable
- Comes with adjustable strap for secure hold
- Dimensions: 14"w x 4.5"d x 13"h



## Foam Lumbar Cushion Extra Wide

Retail  
Packaged

Item # 2668BL-R



- Additional 3.5" width for a broader fit
- Includes adjustable strap for secure hold to chair
- Removable washable cover
- Eases lower back pain and fatigue while sitting by allowing the spine to follow its natural curve
- Dimensions: 17.5"w x 13"h



## Foam Lumbar Back Cushions

Retail  
Packaged

2667

- Provides comfort and support for lower back
- Comes with adjustable strap for secure hold to chairs
- Polyester/cotton blend cover is removable and washable
- Dimensions: 14"w x 4.5"d x 13"h

| Item #   | Description |
|----------|-------------|
| 2667BK-R | Black       |
| 2667BL-R | Royal Blue  |
| 2667RD-R | Maroon      |



## Back Memory Foam Lumbar Cushion

Retail  
Packaged

Item # 2675BL-R

- Temperature-sensitive memory foam molds to your body shape and provides customized comfort for your lower back
- Comes with adjustable strap for secure hold
- Blue polyester/cotton blend cover is removable and washable
- Dimensions: 14"w x 4.5"d x 13"h



## Back Memory Foam Lumbar Cushion with Stabilization Board Insert

Retail  
Packaged

Item # 2676BK-R

- Stabilization board insert provides back support
- Improves spine alignment and back tension
- Temperature-sensitive memory foam molds to your body shape and provides customized comfort for your lower back
- Comes with adjustable strap for secure hold
- Black polyester/cotton blend cover is removable and washable
- Dimensions: 14"w x 4.5"d x 13"h



# CUSHIONS

## Fleece Arm Cushion Covers

Retail  
Packaged

Item # 2624-R

- Thick fleece material provides premium user comfort
- Protects against soreness and nerve pressure
- Ideal for wheelchairs, transport chairs, and scooters
- Easy to put on and take off
- Washable
- Dimensions: 10"w x 11"d x 1"h



## Travel Neck Pillow

Retail  
Packaged

NEW!

Memory Foam

Item # 2643BK-R      Item # 2643BL-R  
Black                      Blue

- Ideal for travel, watching TV, reading, relaxing and sleeping
- Helps to reduce tension in the neck, head and shoulders to ease arthritic pain
- Soft velour cover removes for easy cleaning
- Dimensions: 13.25"w x 11"d x 4"h



2643BL-R



2643BK-R

## Contoured Cervical Collar

Retail  
Packaged

- Provides comfortable neck support, prevents additional injury, and promotes proper healing
- Reduces head and cervical vertebrae movement
- Made of soft, polyurethane foam
- One size fits most
- Velcro tabs for easy and secure closure
- Ribbed stockinet cover promotes air circulation and reduces perspiration and heat build up
- Extra stockinet cover is removable for easy cleaning
- Washable



Height: 2.5" - 4"



| Item # | Dimensions         |
|--------|--------------------|
| 2693-R | 21"l x 1"d x 2.5"h |
| 2694-R | 21"l x 1"d x 3.5"h |
| 2695-R | 21"l x 1"d x 4"h   |

## Fleece Elbow Protectors

Retail  
Packaged

Item # 2626-R

- Plush fleece provides comfortable padding and added protection
- Helps prevent skin irritation, bed sores and decubitus ulcers
- Adjustable velcro straps allow for one size to fit most
- Breathable fleece material is hand washable
- Dimensions: 7.75"w x 10.25"l



## Foot Elevator

Retail  
Packaged

Item # 2683-R

- Comfortable, thick foam provides firm support while relieving pressure on foot and ankle
- Great for elevating foot and leg injuries, post surgeries or sensitive feet
- Adjustable velcro strap allows one size to fit most; removable, washable cotton cover
- Helps prevent pressure sores and ulcers
- Promotes circulation to foot and leg
- Dimensions: 10"w x 10"d x 4"h



## Heel Protectors

Retail  
Packaged

Item # 2627-R  
Padded Velour

- 9.5"w x 11.75"h x 5"d

Item # 2625-R  
Fleece

- 5.5"h x 4.75"d x 2.75"w

- Helps to prevent bed sores
- Great for use in bed or wheelchair
- Hand washable
- Adjustable strap with velcro closure allows for one size to fit most



# CHOOSE *sleep*

A good night's sleep is so important ... **sleep easy** with NOVA's pillows and wedges.



## PILLOWS & WEDGES

**“ So wonderful!** *My knees and ankles feel  
instantly better ...*



***... Highly recommend!!! ”***

- Real NOVA Fan

# PILLOWS & WEDGES



## Full Roll Pillows 2696

Retail  
Packaged

- Item # 2696F-R (Fleece)
  - Item # 2696S-R (Blue Satin)
  - Item # 2696W-R (White)
- Designed to provide head and neck support to relieve muscle tension in the back and shoulders
  - Helps align the spine while promoting proper sleeping posture
  - Alternative uses include sacral (pelvic) or knee support
  - 100% hypoallergenic polyester fiberfill
  - Durable fleece, light blue satin, and white polyester fabric covers are removable and washable
  - Perfect companion for travel
  - Dimensions: 18"w x 7"d

## Comfort Curve Neck Pillow

Retail  
Packaged

Item # 2646-R

- Curved ergonomic shape designed to relieve neck and shoulder pain and muscle tension, for a better night's sleep
- Provides ideal support and comfort while reclining, watching TV, reading or sleeping
- Also great for pelvic, knee or ankle support
- Satin-like material is smooth and cooling, cover is removable and washable
- Filled with 100% polyester fiber
- Dimensions: 22.5"w x 6"d x 13.5"d



## Knee Spacer

Retail  
Packaged



Item # 2622-R  
Small

- 6.75"w x 4.5"d x 4.5"h



Item # 2623-R  
Standard

- 9.75"w x 5.5"d x 8"h

- Ideal for those who have difficulty sitting or sleeping due to hip, leg, back, or joint pain
- Hourglass design promotes proper parallel alignment of the legs, hips, and spine during sleep
- Helps to reduce discomfort in the lower back, legs, hips, ankles, and joints
- Improves circulation and decreases pressure and strain on the affected areas
- Includes adjustable strap to keep pillow securely positioned between legs during sleep
- Light blue fabric covers are removable and washable

## Memory Foam Knee Pillow

Retail  
Packaged

Item # 2677-R



- Ideal for those who have difficult sitting or sleeping due to hip, leg, back, or joint pain
- Hourglass design promotes proper parallel alignment of the legs, hips, and spine during sleep
- Helps to reduce discomfort in the lower back, legs, hips, ankles, and joints
- Improves circulation and decreases pressure and strain on the affected areas
- Includes adjustable strap to keep pillow securely positioned between legs during sleep
- Soft and luxurious charcoal blue Velour™ like fabric cover is removable and washable
- Dimensions: 8"w x 7.75"d x 10.5"h

## Half Roll Pillow Memory Foam

Retail  
Packaged

Item # 2645-R



- Memory Foam Half Roll Pillow helps to reduce discomfort in head, neck, shoulder and back areas
- Ergonomic design promotes ideal spinal alignment and sleep posture
- Can be used under the head, neck, shoulders, legs, ankles and back
- Use for home, work or travel
- Soft and luxurious navy blue Velour™-like fabric cover is removable and washable
- Dimensions: 19.75"w x 8"d x 4"h

## Half Roll Mini Pillow Memory Foam

Retail  
Packaged

Item # 2678-R



- Can be used under the head, neck, shoulders, legs, ankles, and back
- Ergonomic design promotes ideal spinal alignment and sleep posture
- Helps to reduce discomfort in head, neck, shoulder, and back areas
- Use for home, work, or travel
- Soft and luxurious charcoal blue Velour™-like fabric cover is removable and washable
- Dimensions: 13.5"w x 5.25"d x 3"h

# PILLOWS & WEDGES

## Folding Bed Wedges/Pillow Table

2680/2681/2682

Retail  
Packaged

- Gradual slope helps ease respiratory problems while reducing neck, back, and shoulder tension
- Folds compactly for easy storage, transport and other uses
- Improves upper or lower body circulation
- Used to treat the symptoms of hiatus hernia, reflux disorders, and snoring
- Ideal for reading or watching TV
- White and blue polyester/cotton blend covers are removable and washable



Use as a  
Pillow Table!

| Item #   | Description | Dimensions              |
|----------|-------------|-------------------------|
| 2680-R   | White       | 7.5"h x 23.5"w x 23.5"d |
| 2680BL-R | Blue        | 7.5"h x 23.5"w x 23.5"d |
| 2681-R   | White       | 10"h x 23.5"w x 23.5"d  |
| 2681BL-R | Blue        | 10"h x 23.5"w x 23.5"d  |
| 2682-R   | White       | 12"h x 23.5"w x 23.5"d  |
| 2682BL-R | Blue        | 12"h x 23.5"w, x 23.5"d |

## Bed Wedges

2690/2691/2692

Retail  
Packaged

- Gradual slope helps ease respiratory problems while reducing neck, back, and shoulder tension
- Improves upper or lower body circulation
- Used to treat the symptoms of hiatus hernia, reflux disorders, and snoring
- Ideal for reading or watching TV
- White and blue polyester/cotton blend covers are removable and washable



| Item #   | Description | Dimensions              |
|----------|-------------|-------------------------|
| 2690-R   | White       | 7.5"h x 23.5"w x 23.5"d |
| 2690BL-R | Blue        | 7.5"h x 23.5"w x 23.5"d |
| 2691-R   | White       | 10"h x 23.5"w x 23.5"d  |
| 2691BL-R | Blue        | 10"h x 23.5"w x 23.5"d  |
| 2692-R   | White       | 12"h x 23.5"w x 23.5"d  |
| 2692BL-R | Blue        | 12"h x 23.5"w x 23.5"d  |

## Bed Wedge

Retail  
Packaged

### With Half Roll Pillow

Item # 2699-R

- Arm cutout makes this ideal for side and back sleepers, and dual purpose half roll cutout pillow provides neck and back support
- 17 degree gradual slope helps ease respiratory problems while reducing neck, back and shoulder tension, and makes this cushion ideal for reading or watching TV
- Used to treat the symptoms of hiatus hernia, reflux disorders and snoring
- Removable, zippered washable polyester cover
- Dimensions: 19.25"w x 23.5"d x 7.5"h



## Elevating Leg Wedge

Retail  
Packaged

### In 6" and 8" Height

Item # 2685-R  
8" Height

- 19.25"w x 23"d x 8"h

Item # 2686-R  
6" Height

- 19.25"w x 23"d x 6"h



- Helps to treat tired legs, phlebitis, varicose veins, lower back pain, swollen knees, and pelvic traction
- Reduces stress on the spine and improves circulation
- Contoured to fit under the back of the knees
- Ideal for those sleeping or resting with leg casts, boots and braces
- White polyester/cotton blend cover is removable and washable
- 6" height option is great for petite users versus the 8" height option



## Knee Elevator Wedge

Retail  
Packaged

Item # 2687-R

- 22.5"w x 8.75"d x 7"h

Item # 2688-R

- 17"w x 10"d x 7"h

- Improves circulation and helps to maintain back and pelvic position
- Fits comfortably under the back of the knees
- Designed to create a 30 degree bend in the knees
- High density foam maintains shape
- Navy Blue polyester/cotton washable cover



# CUSHION & WEDGE COVERS

## Replacement Covers

| Item #   | Description   | Item #    | Description                        |
|----------|---|-----------|------------------------------------|
| CE-2601  | Cover For 2" Gel Foam Cushion   | CE-2680   | Cover For 2680 Bed Wedge           |
| CE-2602  | Cover For 2" Gel Foam Cushion   | CE-2680BL | Cover For 2680BL Bed Wedge         |
| CE-2603  | Cover For 3" Gel Foam Cushion   | CE-2680V  | Cover For 2680 Bed Wedge - 7.5     |
| CE-2604  | Cover For 3" Gel Foam Cushion   | CE-2681   | Cover For 2681 Bed Wedge           |
| CE-2605  | Cover For 3" Gel Foam Cushion   | CE-2681BL | Cover For 2681BL Bed Wedge         |
| CE-2606  | Cover For 3" Coccyx Gel Foam Cushion  | CE-2681V  | Cover For 2681 Bed Wedge - 10"     |
| CE-2607  | Cover For 3" Coccyx Gel Foam Cushion  | CE-2682   | Cover For 2682 Bed Wedge           |
| CE-2608  | Cover For 3" Coccyx Gel Foam Cushion  | CE-2682BL | Cover For 2682BL Bed Wedge         |
| CE-2609  | Cover For 3" Coccyx Gel Foam Cushion  | CE-2682V  | Cover For 2682 Bed Wedge - 12"     |
| CE-2610  | Cover For 16" Back Foam Cushion   | CE-2690   | Cover For 2690 Bed Wedge           |
| CE-2611  | Cover For 18" Back Foam Cushion   | CE-2690BL | Cover For 2690BL Bed Wedge         |
| CE-2612  | Cover For 20" Back Foam Cushion   | CE-2691   | Cover For 2691 Bed Wedge           |
| CE-2613  | Cover For 3" Convolutd Foam Cushion   | CE-2691BL | Cover For 2691BL Bed Wedge         |
| CE-2614  | Cover For 3" Coccyx Foam Cushion  | CE-2692   | Cover For 2692 Bed Wedge           |
| CE-2615  | Cover For 3" Convolutd Seat/Back Foam Cushion for 18" x 16" (w/ Fleece Cover) | CE-2692BL | Cover For 2692BL Bed Wedge         |
| CE-2616  | Cover For 3" Foam Cushion For 18" x 16"                                       | CE-2693   | Cover for 2693 Cervical Collar     |
| CE-2617  | Cover For 3" Convolutd Foam Cushion for 16" x 16"                             | CE-2694   | Cover for 2694 Cervical Collar     |
| CE-2622  | Cover For Knee Spacer - Small   | CE-2696F  | Cover For Cervical Pillow - Fleece |
| CE-2623  | Cover For Knee Spacer - Large   | CE-2696S  | Cover For Cervical Pillow- Satin   |
| CE-2672  | Cover For 2672 Comfort Ring   | CE-2696W  | Cover For Cervical Pillow- White   |
| CE-2672P | Cover For 2672P Comfort Ring  |           |                                    |
| CE-2673  | Cover For 2673 Comfort Ring   |           |                                    |
| CE-2673P | Cover For 2673P Comfort Ring  |           |                                    |
| CE-2674  | Cover For 2674 Comfort Ring   |           |                                    |
| CE-2674P | Cover For 2674P Comfort Ring  |           |                                    |



GIVE YOUR BODY A HUG

SITTING



LOUNGING



SLEEPING



CHOOSE

*well-being*

Life Aids make our everyday lives a just littler easier.



LIFE AIDS

“

*I am a below the knee amputee and **I use the TKW to get around** when I am not wearing my leg. I have tried other brands and this is by far the **best knee scooter** I have used.*



***I would recommend this to anyone** who uses a knee scooter on a regular basis.*”

- Real NOVA Fan

## The Knee Walker

### What is the Knee Walker?

The NOVA Knee Walker is an excellent mobility device for foot or ankle injuries when the affected area cannot bear weight or has limited weight bearing precautions. It can be a great long or short term alternative to crutches or folding walkers that can have adverse effects, such as back or under arm pain from extended use. The Knee Walker allows the user to maintain an active and more independent lifestyle which will help him/her progress to a quicker recovery.

### Features:

- Oversized, contoured padded platform pad (comfortable and long-lasting)
- Durable, anatomical synthetic rubber handles
- Steering assembly allows the user to easily maneuver and helps maintain better stability
- Large 8" wheels provide a smooth ride over uneven surfaces
- Locking hand brakes provide speed control and allows user to stay in a single position without rolling during everyday tasks
- Quickly adjusts for right or left leg injuries
- Easy-to-fold down steering column is convenient for transport and compact storage



A great alternative to crutches!



### Accessories:



**TKW Cup Holder**

Item # CH-3500

Retail  
Packaged



**TKW Fleece Cover**

Item # TKW-FC

Retail  
Packaged



**TKW Basket**

Item # TKW-BASKET



**Knee Walker**  
TKW-12

- The standard Knee Walker is a great fit for most users



**Heavy Duty Knee Walker**  
TKW-13

- Sturdy, reinforced frame and components for a higher weight capacity



**Heavy Duty Knee Walker - Tall**  
TKW-14

- Sturdy, reinforced frame and components for a higher weight capacity
- For taller users

| Item # | Approx. User Height | Knee Pad Height Adjustment | Handle Height Adjustment | Overall Dimensions | Overall Dim. Folded       | Weight | Weight Cap.   | Color  |
|--------|---------------------|----------------------------|--------------------------|--------------------|---------------------------|--------|---------------|--------|
| TKW-12 | <b>4'11" - 6'2"</b> | 16" - 20.5"                | 31.25" - 37.25"          | 17.5"w x 32.25"l   | 20.5"h x 17.5"w x 32"l    | 26 lb  | <b>300 lb</b> | Silver |
| TKW-13 | <b>4'11" - 6'2"</b> | 17" - 21.5"                | 30.25" - 37.25"          | 18"w x 32.25"l     | 21.25"h x 18"w x 32.25"l  | 29 lb  | <b>400 lb</b> | Red    |
| TKW-14 | <b>6'2" - 6'8"</b>  | 21" - 25.5"                | 35.25" - 41.25"          | 19.5"w x 36.25"l   | 23.5"h x 19.5"w x 36.25"l | 32 lb  | <b>400 lb</b> | Blue   |

The Knee Walker makes a great rental item!



## Deluxe Hip Kits



The Deluxe Hip Kit aids in recovering from hip, back, or knee surgery. Each kit contains a combination of 7 Life Aids.

\*All of the items in the Deluxe Hip Kits can be ordered together using the Deluxe Hip Kit item numbers or individually.



### 1 Deluxe Hip Kit (PA-1000)

Includes:

- D-32 - Dragon Reacher
- PA-1001 - Dressing Stick
- PA-1002 - Plastic Shoe Horn
- PA-1003 - Terry Cloth Sock Aid
- PA-1004 - Bath Sponge
- PA-1005 - Elastic Shoe Laces (Black)
- PA-1006 - Elastic Shoe Laces (White)

### 3 Deluxe Hip Kit (PA-1200)

Includes PA-1000 items, with:

**PA-1011 - Metal Shoe Horn**  
(substitute for PA-1002 - Plastic Shoe Horn)

### 2 Deluxe Hip Kit (PA-1100)

Includes PA-1000 items, with:

**PA-1007 - Plastic Sock Aid**  
(substitute for PA-1003 - Terry Cloth Sock Aid)

### 4 Deluxe Hip Kit (PA-1300)

Includes PA-1000 items, with:

**FR-32 - Folding Reacher**  
(substitute for D-32 - Dragon Reacher)

### The Deluxe Hip Kits contain a combination of the following Life Aids:

PA-1001, PA-1002, PA-1003, PA-1004, PA-1005, PA-1006, PA-1011, D-32 & FR-32

#### Dressing Stick

Item # PA-1001

- Assists with dressing and undressing
- 27" long



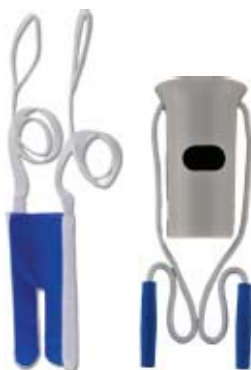
- Photo Credit:  
NOVA VP, Ron Gaudiano

**Deluxe Hip Kit continued...****Retail  
Packaged****Sock Aids**

Item # PA-1003 (Terry Cloth)

Item # PA-1007 (Plastic)

- Allows for less bending when putting on socks
- Has long straps for easy assistance

**Shoe Horn**

Item # PA-1011 (Metal)

Item # PA-1002 (Plastic)

- Helps with bending over and guiding feet into footwear
- 24" long

**Elastic Shoelaces (Pair)**

Item # PA-1005 (Black)

Item # PA-1006 (White)

**Bath Sponge with Deluxe Long Handle**

Item # PA-1004

- Assists with washing hard-to-reach areas and flexes to the contours of the body
- 23" long

**Dragon Reachers****Retail  
Packaged**

Item # D-24 (23.25")

Item # D-32 (32")

- 3" wide jaw opening
- Durable rubber gripping surface
- Jaw rotates 360 degrees

**Folding Reacher****Retail  
Packaged**

Item # FR-32

- Folds and unfolds for convenient storage
- Length Extended: 32"
- Length Folded: 16"
- Width Between Suction Cups: 4"

**PIKSTIK Reachers****Retail  
Packaged**

Item # P-261 (26")

Item # P-321 (32")



# Underpads

Retail  
Packaged

## Reusable

- Perfect for beds, chairs and cars
- 100% cotton top sheet is soft and comfortable
- Polyester/rayon soaker absorbs and traps wetness
- Machine wash and dry up to 250 times



UP-1818



UP-3236P

| Item #   | Dimensions | Description                     |
|----------|------------|---------------------------------|
| UP-1724  | 17" x 24"  | White                           |
| UP-1818  | 18" x 18"  | White                           |
| UP-2436  | 24" x 36"  | White                           |
| UP-3236  | 32" x 36"  | White                           |
| UP-3236P | 32" x 36"  | Plaid                           |
| UP-3236T | 32" x 36"  | White, with tuck-in flaps       |
| UP-3236H | 32" x 36"  | White, with positioning handles |
| UP-3654  | 36" x 54"  | White                           |
| UP-3654T | 36" x 54"  | White, with tuck-in flaps       |
| UP-3672  | 36" x 72"  | White                           |
| UP-3672T | 36" x 72"  | White, with tuck-in flaps       |

# Ultra Underpads

Retail  
Packaged

## Reusable

- Perfect for beds, chairs and cars
- Velour top sheet is soft and comfortable
- Polyester/rayon soaker absorbs and traps wetness
- Machine wash and dry up to 250 times



UP-2122BL



UP-2122BR



| Item #    | Dimensions | Description |
|-----------|------------|-------------|
| UP-2122BL | 22" X 21"  | Blue        |
| UP-2122BR | 22" X 21"  | Brown       |

## Male Urinal

Retail  
Packaged

Item # 8105M-R

- Spill resistant design with cover to prevent odor (8105M-R only)
- Contoured design ensures a complete and secure seal during use
- Perfect for bedside or use in vehicle
- Grip handle allows for use in multiple positions for bedridden users
- Durable shatter resistant plastic design is easy to empty and clean



## Female Urinal

Retail  
Packaged

Item # 8106F-R



Latex-Free

8105M-R

8106F-R

## Sitz Bath

Retail  
Packaged

Item # 8101-R

- Convenient On/Off control clip
- Fits most standard toilets
- Aids in relieving the discomfort of perineal conditions such as hemorrhoids, menstrual cramps, bladder or prostate infections
- Includes 2000 ml solution bag

## Bedpan

Retail  
Packaged

Item # 8107-R

- For users that have difficulty getting out of bed
- Durable molded plastic construction and conventional style
- Odor resistant and easy to clean



## Fracture Bedpan

Retail  
Packaged

Item # 8108-R

- Tapered lower front for easier user positioning
- Durable molded plastic construction and conventional style
- Odor resistant and easy to clean



## Adjustable Oxygen Tank Cart with Wheels

Item # 6001

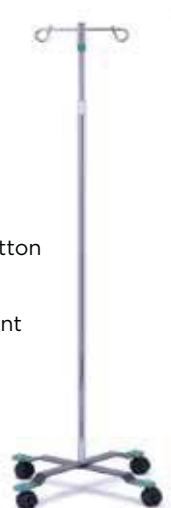
- Hammertone steel frame
- Height Adjustment: 38 3/4" - 43 1/4"
- Casters: 6" solid tire
- Overall Width: 12"



## I-V Stand (2-hook)

Item # 6081

- Removable top allows for easy transport
- Converts from 2-hook to 4-hook with push button release
- Swivel castors for easy maneuverability
- Locking collar allows for easy height adjustment
- Weighted base provides stability



# Exercise Peddler

Retail  
Packaged

Item # 6002-R



- Helps to increase strength, improve coordination and circulation in users arms and legs
- Foldable design is great for travel and compact storage
- Large digital display records exercise time, revolution count, revolutions per minute (rpm's) and calories burned
- Scan feature alternately display measurements automatically
- Anti-slip rubber pads prevent sliding and help to protect surfaces
- Button cell battery included
- Includes adjustable resistance knob for variable resistance training



# Overbed Table



Overbed Table (Standard)



Overbed Table (Tilt-Top)

## Overbed Table (Standard) Item # 6070

- Non-tilt silver vein base
- Can be raised or lowered to infinite positions from 28.25 - 44.75 inches
- Walnut wood grained laminate top locks in place when adjustment handle is released
- 2 inch locking swivel casters for easy maneuverability

## Overbed Table (Tilt-Top) Item # 6071

- Separate tilt and raise/lower handles for safe and independent operation of table function
- Three-position tilt with squeeze of handle
- Wheels can be locked into place
- Laminated walnut wood grain

| Item # | Description            | Table Dimensions | Base Dimensions   | Height Adjustment | Weight Capacity | Weight   |
|--------|------------------------|------------------|-------------------|-------------------|-----------------|----------|
| 6070   | Overbed Table          | 30"l x 15"w      | 26.25"l x 15.38"w | 28.25" - 44.75"   | 40 lb           | 24.25 lb |
| 6071   | Tilt-Top Overbed Table | 30"l x 15"w      | 26.25"l x 15.5"w  | 30" - 43"         | 50 lb           | 27.6 lb  |

## Cast Protectors

Retail  
Packaged



- Reusable long plastic cast and bandage protector
- Plastic ring and diaphragm create a tight seal that prevents water from entering inside
- Keeps water from casts or bandages when showering or bathing
- Latex Free



| Item # | Description                                 |
|--------|---|
| 8113-R | Arm cast protector, Youth/Medium - 18" x 5" |
| 8116-R | Arm cast protector, Adult/Short - 22" x 5"  |
| 8115-R | Arm cast protector, Adult/Long - 39" x 5"   |
| 8114-R | Leg cast protector, Youth/Medium - 18" x 7" |
| 8118-R | Leg cast protector, Adult/Short - 23" x 7"  |
| 8117-R | Leg cast protector, Adult/Long - 42" x 9"   |
| 8119-R | Leg cast protector, Youth/Long - 31" x 7"   |

## Exercise Squeeze Aids

Retail  
Packaged



**Hand Flex Star**  
Squeeze & Extend!

- Helps strengthen grip and reduce stress
- Variable resistance training for hands, fingers and forearms
- Relieves carpal tunnel syndrome (PA-B01 & PA-B02)
- Attractive design made of durable latex free rubber is easy to clean



**Exercise Squeeze Ball**

| Item # | Description                          |
|--------|--------------------------------------|
| PA-B01 | Exercise Squeeze Ball - orange, soft |
| PA-B02 | Exercise Squeeze Ball - blue, firm   |
| PA-E01 | Exercise Squeeze Egg - pink, soft    |
| PA-E02 | Exercise Squeeze Egg - blue, medium  |
| PA-E03 | Exercise Squeeze Egg - orange, firm  |
| PA-H01 | Exercise Squeeze Star - pink, soft   |
| PA-H02 | Exercise Squeeze Star - blue, medium |
| PA-H03 | Exercise Squeeze Star - orange, firm |
| PA-S01 | Hand Flex Star - pink, soft          |
| PA-S02 | Hand Flex Star - blue, medium        |
| PA-S03 | Hand Flex Star - orange, firm        |



**Exercise Squeeze Egg**



**Exercise Squeeze Star**

## Finger Pulse Oximeter

Retail  
Packaged

Item # PO-301

- Display shows Blood-Oxygen Saturation (SpO2), pulse rate and pulse bar
- 3-way screen display
- 2-color OLED screen with adjustable brightness
- Pulse rate accuracy of +/- 2 bpm
- Large easy-to-read LED display with low-power indicator
- Includes 2 AAA batteries, strap, and protective cover
- Automatic power off when finger is removed
- 3 Year Warranty



## Overdoor Traction Set

Retail  
Packaged



Item # 6060-R

- Easily fits over standard door
- Helps relieve joint-related back and neck pain by stretching and separating joints
- Easy assembly, no tool required

## Overdoor Exercise Set

Retail  
Packaged



Item # 6061-R

- Easily fits over standard door
- Helps increase range of arm mobility while stimulating muscles
- Easy assembly, no tool required

## Leg Lifter

Retail  
Packaged

Item # PA-1009

- Great for getting in and out of chairs, cars and beds
- Rigid foot loop can be shaped to your foot or shoe size
- Easy to grasp flexible hand hold
- Length - 40"



## Gait Belts



### Metal Buckle/Plastic Buckle/Heavy Duty

- Safe and easy way to transfer and prevent falls
- Helps to reduce caregiver back injuries
- Metal buckle with safety locking teeth (Metal Buckle)
- Quick-release hard plastic buckle allows easy handling (Plastic Buckle)
- Easy to grip hand holds provide superior comfort and leverage (Heavy Duty)

| Item #  | Dimensions | Description                   |
|---------|------------|-------------------------------|
| PA-1031 | 36" x 4"   | Heavy Duty, fits 27-33" waist |
| PA-1032 | 48" x 4"   | Heavy Duty, fits 33-38" waist |
| PA-1033 | 42" x 4"   | Heavy Duty, fits 38-43" waist |
| PA-1034 | 52" x 2"   | Metal Buckle, Blue            |
| PA-1035 | 72" x 2"   | Metal Buckle, Blue            |
| PA-1036 | 52" x 2"   | Metal Buckle, Stripes         |
| PA-1037 | 72" x 2"   | Metal Buckle, Stripes         |
| PA-1038 | 52" x 2"   | Plastic Buckle, Blue          |
| PA-1039 | 72" x 2"   | Plastic Buckle, Blue          |
| PA-1040 | 52" x 2"   | Plastic Buckle, Stripes       |
| PA-1041 | 72" x 2"   | Plastic Buckle, Stripes       |



Metal Buckle, Blue



Plastic Buckle, Stripes



Heavy Duty

## Step Stools

### Step Stool

Item # 6065

- Lightweight - 5 lb
- Skid resistant rubber tips and step base
- Weight capacity: 300 lb



6065

### Step Stool with Hand Rail

Item # 6066

- Lightweight - 7.5 lb
- Skid resistant rubber tips and step base
- Hand rail for extra support and safety
- Weight capacity: 300 lb



6066

## Backjoy Life Aids



### Adjustable Massage Balls

Retail  
Packaged

Item # ACMBL001

- Self massaging tool relieves back pain and stiffness, eases tense and knotted muscles and helps accelerate recovery
- Unique, textured spiral surface gently massages deep into your muscles, enhancing blood flow
- End knob easily targets specific areas of tension
- Anatomical design targets both sides of spine
- Perfect for neck, body and back relief with its adjustable design (adjusts to 3 different widths)
- Dimensions: 6"w x 3"d x 3"h



End knob targets specific areas



### Trigger Point Massager

Retail  
Packaged

Item # ACTPM001  
One-Piece Massager

Item # ACTPR001  
Two-Piece Massager

- Trigger Point Massager relieves pain through direct pressure
- Trigger point knobs around the massager are specially designed to simulate the action of a massage therapist's thumb
- Triggers points in your shoulders, neck, back, feet and legs to release tension and relieve muscle soreness
- Perfect for muscle massages, self massaging, neck relief and shoulder pain relief
- Easy-to-hold ergonomic design
- Detachable design makes it easy to break massager down into two small parts, perfect for travel (ACTPR001 only)



One-Piece Massager  
ACTPM001



Two-Piece Massager  
ACTPR001



# T.E.N.S. Units

## Transcutaneous Electronic Nerve Stimulators



### Electronic Nerve Stimulator

Item # TENS-1000

- Dual isolated channels, two leads per channel
- Pulse Amplitude (constant current): Adjustable 0 - 80 mA, 500 Ohm load
- Pulse Frequency: Adjustable 2 - 150Hz
- Pulse Width (micro seconds): Adjustable 60 - 250
- Wave Form: Asymmetrical, Bi-Phase, square pulse
- Mode Selector: N (Normal)
- Includes carrying case, 2 dual channel 360-degree swivel lead wires, 9V batteries, 4 reusable electrodes, and manual.



### Deluxe Electronic Nerve Stimulator

Item # TENS-2000

- Mode Selector: B (Burst), N (Normal), & M (Modulation)
- Dual isolated channels, two leads per channel
- Pulse Amplitude (constant current): Adjustable 0 - 80 mA, 500 Ohm load
- Pulse Frequency: Adjustable 2 - 150Hz
- Pulse Width (micro seconds): Adjustable 60 - 250
- Wave Form: Asymmetrical, Bi-Phase, square pulse
- Mode Selector: N (Normal)
- Includes carrying case, 2 dual channel 360-degree swivel lead wires, 9V batteries, 4 reusable electrodes, and manual.



### Electronic Muscle Stimulator

Item # EMS-3000

- Neuromuscular Stimulator
- Pulse Frequency: Selectable 5, 30, & 100 Hz
- Pulse Width (micro seconds): Fixed 250
- Mode Selector: M (Modulation)

### Electrodes for TENS Units

Item # A600

### Warranty

TENS and EMS units: 5 Year Warranty  
Lead Wires: 90 Day Warranty  
Electrode Pads: No Warranty

# 2018 ACTION PLAN



## 1 Make it a great shopping experience by making sure your front end looks great ... every day.

- ☐ Make sure all products have **re-order** tags
- ☐ **Re-order** products before the last one is sold
- ☐ **Replace** faded or torn boxes (just call us!)
- ☐ **Replace** products that are not selling (just call us!)
- ☐ Keep your **marketing materials** looking fresh and new



## 2 Make your staff HME Educators, Advocates and Advisors!

- ☐ Sign up for **NOVA live!** - Our Education Platform
- ☐ Watch the **NOVA One Hour Product Education Session** and take the quiz (on NOVA live!)

## 3 Market your HME Retail ... this is where you can crush your competition.

- ☐ Make sure your **website** communicates your HME offering, education and expertise
- ☐ Let your neighbors, community and referral sources know who you are and what you do ... **especially HME Retail**



JANUARY

---

---

---

FEBRUARY

---

---

---

MARCH

---

---

---

APRIL

---

---

---

MAY

---

---

---

JUNE

---

---

---

JULY

---

---

---

AUGUST

---

---

---

SEPTEMBER

---

---

---

OCTOBER

---

---

---

NOVEMBER

---

---

---

DECEMBER

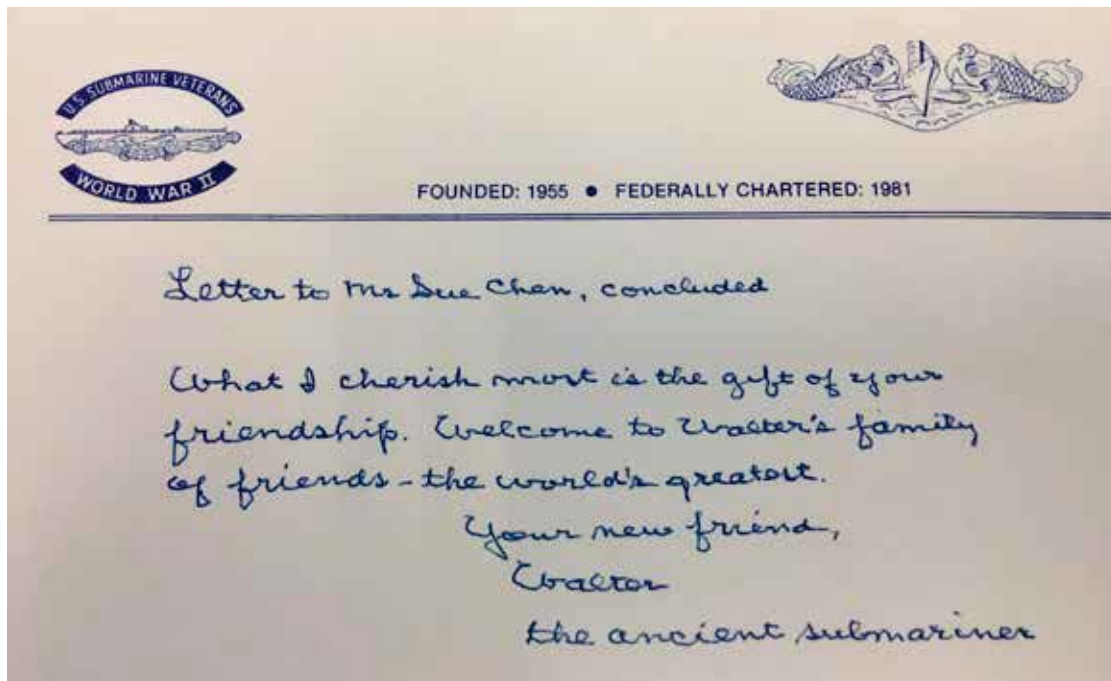
---

---

---

CHOOSE

*inspiration*



“***This beautiful walker*** which my daughter calls Dad's Hot Rod, even with the advanced hype, far exceeded my fondest expectations. The Zoom is a remarkably well engineered product, offering ***a new mode of locomotion*** and bringing a new dimension of the life of a not too young man - one sometimes referred to as the “Ancient Submariner.” ”

- Walter Beyer, WWII Veteran, Quartermaster QM1/c  
U.S. Navy, *USS Bowfin*



NOVA IS A PROUD SPONSOR OF  
AMERICA'S WWII VETERANS

CHOOSE

joy

A *joyful heart* IS GOOD MEDICINE - **PROVERBS**

**17:22A** • *Joy is a decision*, A REALLY BRAVE ONE, ABOUT HOW YOU ARE GOING TO RESPOND TO LIFE - **WESS STAFFORD**

• SINCE YOU GET MORE JOY OUT OF *giving joy to others*, YOU SHOULD PUT A GOOD DEAL OF THOUGHT INTO THE HAPPINESS THAT YOU ARE ABLE TO GIVE - **ELEANOR ROOSEVELT** • *Joy*

*is a net of love* BY WHICH YOU CAN CATCH SOULS -

**MOTHER THERESA** • THE HEALTHIEST RESPONSE TO *life is joy* - **DEEPAK**

**CHOPRA** • KNOW THAT JUST ONE *moment of joy* IS A SIGN OF BETTER THINGS TO COME - **ABRAHAM HICKS** • FIND ECSTASY IN LIFE; THE MERE

SENSE OF LIVING IS *joy enough* - **EMILY DICKINSON** • JOY DOES NOT SIMPLY HAPPEN TO US. WE HAVE TO *choose joy* AND KEEP CHOOSING IT EVERY DAY - **HENRI NOUWEN** • TO GET THE FULL *value of joy* YOU

MUST HAVE SOMEONE TO DIVIDE IT WITH - **MARK TWAIN** • REMEMBER THAT *your natural state is joy* - **WAYNE DYER** • *Joy is what happens* TO US WHEN WE ALLOW OURSELVES TO RECOGNIZE HOW GOOD THINGS REALLY ARE - **MARIANNE WILLIAMSON** • *Count it all joy*, MY BROTHERS,

WHEN YOU MEET TRIALS OF VARIOUS KINDS, FOR YOU KNOW THAT THE TESTING OF YOUR FAITH PRODUCES STEADFASTNESS - **JAMES 1: 2-3** • COMPARISON IS THE THIEF OF *joy* - **THEODORE ROOSEVELT** • *The joy we feel* HAS LITTLE TO DO WITH THE CIRCUMSTANCES OF OUR LIVES

AND EVERYTHING TO DO WITH THE FOCUS OF OUR LIVES - **RUSSEL M. NELSON** • YOU ARE FREE TO *think thoughts of joy*, AND WHATEVER

YOU CHOOSE WILL ATTRACT THE SAME KIND BACK TO YOU. WORRY ATTRACTS WORRY. *Joy attracts joy* - **RHONDA BYRNE** • *Find joy* WHERE JOY RESIDES - **ROBERT LOUIS STEVENSON** • *Joy is the best makeup* -

**ANNE LAMOTT** • *Joy is not in things*, IT IS IN US - **BENJAMIN FRANKLIN**