



# ***Contemporary III***

## **ADJUSTABLE BED**



## **Owner's Manual**

**Model Number: MANS503**

This product and all our bedding products are covered by one or more of the following issued and pending U.S. patents including Nos. 7448100, D657157, D663542, D657158, D657156, 8209801, 8209800, D663544, D663543 and other patents pending.

Photos are for illustration purposes only.

COPYRIGHT 2018 CUSTOMATIC®

**Serial Number:** \_\_\_\_\_  
(Place your serial number here for ready reference)

# Table of Contents

Safety Precautions	4
Parts List	5
Installation Guide	8
Remote Control Operation Guide	10
Special Functions	13
Troubleshooting	14
Warranty & Registration	18

*CUSTOMATIC is a trademark of PPJ, LLC.  
All other trademarks are the property of their respective owners.*



07.16.2018

# Safety Precautions

## ATTENTION!

### IMPORTANT SAFETY INSTRUCTIONS.

PLEASE READ THESE INSTRUCTIONS THOROUGHLY BEFORE USING THIS PRODUCT.



#### ELECTRICAL SAFETY

Always unplug this adjustable bed from the electrical outlet before any cleaning or maintenance of the bed. To safely disconnect, make sure all controls are in the off position, then remove the plug from the outlet.

Keep cord away from heated surfaces. Keep air openings free of lint, hair and the like. Never operate when air openings are blocked. Never drop or insert any object into any opening. Use only indoors.

Cease use of this adjustable bed and contact the adjustable bed Customer Care Center for repair if: (1) it has a damaged cord or plug, (2) it is not working properly, (3) it has been dropped or damaged, or (4) it has been dropped into water.

#### GROUNDING SAFETY

To reduce the risk of electric shock, electrical fire, or faulty operation of this product, your adjustable bed features a polarized plug meant to be used only with a grounded electrical outlet. If this plug does not fit into your outlet, contact a qualified electrician to install a properly grounded outlet. Failure to use a properly grounded outlet for this product will compromise this important grounding safety feature. The use of adapters is not recommended unless the outlet is checked by a qualified electrician to ensure the proper grounding of the adapter. NOTE: Unauthorized modifications to this product could void the electrical portion of your Warranty.

#### WARRANTY WARNING!

This bed is specifically designed to require no maintenance by you, the user. Any opening or tampering with the control box, motors, or hand controls (with the exception of the battery compartment if equipped) will result in a void of the Warranty. Only those authorized may conduct repairs or part replacement on your adjustable bed. Unauthorized modifications to this product could void

the electrical portion of your Warranty.

#### IN-HOME USE ONLY

This adjustable bed is designed exclusively for in-home use.

**HOSPITAL DISCLAIMER:** It is NOT designed for hospital use and is NOT designed to meet hospital standards. Do not use this bed with TENT TYPE oxygen therapy equipment or use near explosive gases.

#### IMPORTANT SAFETY FEATURES

**Weight fail safe feature:** In the case that an overload of weight is placed on the head or foot mechanism, the control unit will automatically stop all functions. The control unit will automatically resume all functions 30 seconds after excess weight is removed.

The recommended weight limitations for your adjustable bed is 850 lbs. on all sizes. For your adjustable bed to structurally support the recommended weight, weight must be distributed evenly across the head and foot sections. The adjustable bed will not and is not intended to support or lift this amount in just the head or foot section. Dependent on the size and/or model of mattress, the available weight limit may be less.

**Locking caster feature:** This adjustable bed may be equipped with special locking casters. For your safety, these casters will prevent bed movement when all casters are in the locked position. To lock casters, push down the safety latch on the caster. To resume product mobility, lift the safety latch up.

**NOTE:** If your adjustable bed is positioned on a hard floor surface such as hardwood or tile, it is strongly recommended that rubber caster cups or carpet squares are placed under the casters in addition to locking them in place. Casters will not roll when locked, but may slide on an uncarpeted surface.



FOR OPTIMAL SAFETY, YOUR ADJUSTABLE BED SHOULD BE PLUGGED INTO A SURGE PROTECTOR (not supplied with this adjustable bed).

# Safety Precautions

---

## USER-SERVICEABLE PARTS

This bed is specifically designed to have no maintenance by you, the user. Therefore, you are encouraged not to open any motors, alter the wiring, or adjust, modify or change the structure of the product, as it will void the Warranty.

## RADIO FREQUENCY IS 2.4 GHZ

FCC compliant device complies with part 15 of the FCC Rules. Operation is subject to the following two conditions: (1) This device may not cause harmful interference, and (2) this device must accept any interference received, including interference that may cause undesired operation.

Any change to the antenna or the device could result in the device exceeding the RF exposure requirements and void user's right to operate the device.



## CONSUMERS WITH PACEMAKERS

It is possible that the (optional) vibrating feature of this bed may be misinterpreted by some pacemakers as movement and/or exercise. This is common with any product that produces a vibrating motion, and may or may not affect your pacemaker. Please consult your physician with any concerns.

## PRODUCT RATINGS

**Lift Motor Restrictions:** The lift motors in this bed are NOT designed to operate continuously for more than three (3) minutes over a thirty (30) minute time period, or approximately 10% duty cycle. To ensure reliable functionality and full life of this product, do not attempt to exceed these limits.

**NOTE:** Attempting to circumvent or exceed this rating will shorten the life expectancy of the product and may void the Warranty.

The structure of the bed will support the recommended weight when distributed evenly across the bed. The head and foot sections are not designed to individually support or lift this amount of weight. For optimal performance, entering and exiting the adjustable

bed with the bed in the flat or level position is recommended.

**NOTE:** Exceeding the recommended weight restrictions could damage your adjustable bed and void your Warranty.



## SMALL CHILDREN AND PETS WARNING

Immediately dispose of all packing materials as it can pose a smother risk to small children and pets. Injury could occur also if children or pets are permitted to play on or under the bed. Do not allow children to operate this bed without adult supervision.

## LIFT WARNING

Do not sit on the head or foot sections while in the raised position, or during lift or lowering cycles.

## MOVING AFTER INSTALLATION

Do not place adjustable bed vertically on its head or foot sections. This may cause injury to persons or damage to the adjustable bed. Two people are required for moving this adjustable bed due to its heavy weight.

## SAFETY

When an overload of weight is placed on the head or foot mechanism, the control unit will automatically stop all functions. The control unit will automatically resume all functions 30 seconds after the excess weight is removed.

Massage motors will automatically shut off after running continuously for 15 minutes. All massage functions will be operational again after 5 minutes.

**NOTICE:** The changes or modifications not expressly approved by the party responsible for compliance could void the user's authority to operate the equipment.

**IMPORTANT NOTE:** To comply with the FCC RF exposure compliance requirements, no change to the antenna or the device is permitted. Any change to the antenna or the device could result in the device exceeding the RF exposure requirements and void user's authority to operate the device.

## SAVE THESE INSTRUCTIONS.

Proper operation of your adjustable bed is necessary to ensure the long life and durability you expect from a high-quality product. The manufacturer has tested and inspected this product prior to shipment.

# Parts List

---

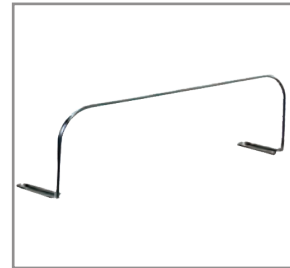
Before discarding any packing materials, check the adjustable bed carton and verify all items in the parts list are included.



Remote control (1)



AAA batteries (3)



Mattress retainer bar (1)



Center leg bracket (2) \*



Screw & nut (2) \*



Wrench (1) \*



Lounge bed leg (2)



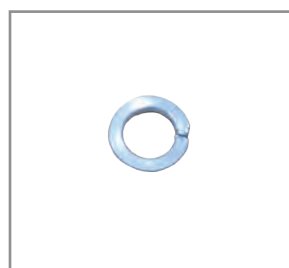
4.5" Post bed leg (4) \*\*



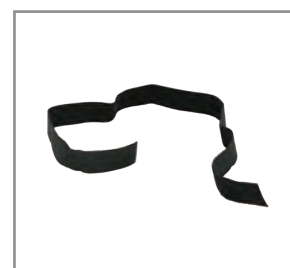
2" Leg extender (4) \*\*



Knob screw (2)



Spring washer (2)



Bed leg strap (1) \*\*\*

\* Only available in Queen, King, and Cal King models.

\*\* Queen, King, and Cal King models have six (6) post bed legs and leg extenders.

\*\*\* Only available in Twin XL, Split Cal King, and Split Queen models.

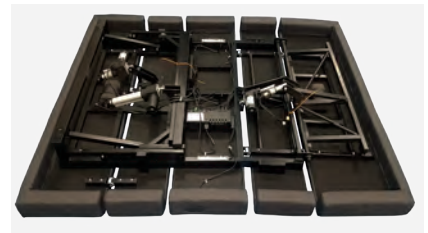
# Installation Guide

**NOTE:** For safety reasons, lifting of the adjustable bed must always be performed by two (2) people; and the unit should always be be on a flat surface before opening.

## Setting up your adjustable bed

### FOR TWIN, TWIN XL, SPLIT QUEEN, SPLIT CAL KING, FULL, AND FULL XL MODELS

- 1 Lift the adjustable bed unit out of the shipping carton carefully, and put it on a flat floor with the top side facing downward.
- 2 Remove all accessory boxes and cut the orange ties from inside the adjustable bed.

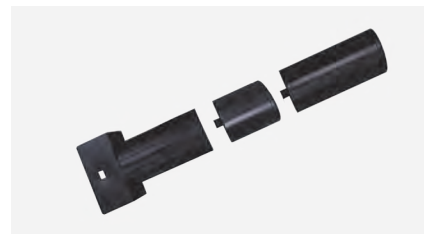


### FOR QUEEN, KING, AND CAL KING MODELS

- 1 Lift the two separate sections of the adjustable bed out of the shipping carton carefully, and put them on a flat floor with the top side facing downward.
- 2 Remove all accessory boxes and cut the orange ties from inside the adjustable bed.
- 3 Move the head and foot sections of the bed together. Make sure the bars and frames are properly aligned at the center.
- 4 Take out the center leg brackets and post bed legs from the accessory box.
- 5 Attach the post bed leg to the end of the center leg bracket by threading it in a clockwise direction.

**NOTE:** If you want to add more height to the adjustable bed, attach the leg extender between the center leg bracket and the post bed leg.

- 6 To connect the head and foot sections, put the center leg bracket over the parallel bars, lining it up with the pre-drilled holes.



# Installation Guide

- 7 Thread the screw through the center leg bracket and into the bars to keep it in place. Thread a nut at the end of the screw, and tighten it with a wrench.
- 8 Repeat steps 5 to 7 to install the second center leg bracket on the other end of the parallel bars.



## Attaching the bed legs

- 1 Take out the lounge bed legs and post bed legs from the accessory box.
- 2 Attach the post bed leg to the end of the lounge bed leg by threading it in a clockwise direction.

**NOTE:** If you want to add more height to the adjustable bed, attach the leg extender between the lounge bed leg and the post bed leg.

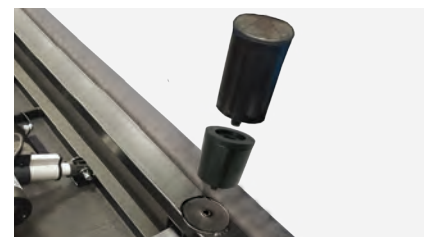
- 3 Attach the lounge bed leg to the C-channel frame on the foot section of the bed. Make sure the leg opening is facing inside the frame.
- 4 Insert a knob screw fitted with a washer into the pre-drilled hole in the C-channel frame and through the lounge bed leg. Tighten the knob screw in place.
- 5 Repeat steps 2, 3, and 4 on the other lounge leg.
- 6 Attach the remaining post bed legs to the head section of the bed by threading them clockwise into the pre-drilled holes.

**NOTE:** If you want to add more height to the adjustable bed, attach the leg extender between the bed and the post bed leg.

- 7 Tighten the legs securely to the adjustable bed.

**NOTES:**

- Do not overtighten the bed legs.
- Make sure all legs are adjusted to the same height.



## Setting up the electronics

### FOR QUEEN, KING, AND CAL KING MODELS

Plug the cord for the foot lift into the control box. Insert it into the port labeled "Foot Actuator" (with red & orange label).



# Installation Guide

## Setting up the electronics

### FOR ALL MODELS

- 1 Remove and extend the power cord from the adjustable bed.
- 2 Rotate the adjustable bed over carefully so the top side is now facing upward. Do not rest the bed on its side. The weight may damage the legs.
- 3 Plug the power cord into a working and grounded electrical outlet.

**NOTE:** For optimal safety, using a surge protector (not included) is highly recommended.

- 4 Install batteries in the remote control. Try all functions on the remote to make sure all features are operational.

**NOTE:** If the bed does not work, see the Troubleshooting section of this manual.

- 5 Return bed to flat position before continuing with the installation.

**NOTE:** Make sure your bed is in a flat position before using it. Press the **Flat** button on the remote control for over 1.5 seconds after plugging in the power cord.



### IMPORTANT!

Make sure power cords do not obstruct any adjustable bed mechanisms.

## Attaching the mattress retainer bar

- 1 Align the open ends of the retainer bar with the “loop” retainer anchors located at the foot of the bed.
- 2 Slide the retainer bar into the anchors allowing the ends to glide into the loop.

If the adjustable bed is set up without a headboard, place your mattress on the adjustable bed surface. Your adjustable bed installation is now complete.

If a headboard is to be installed, see “Assembling the headboard bracket”.



## Installing the bed leg straps (optional)

To help prevent bed separation when using two (2) Twin XL, Split Cal King Size, or Split Queen beds, use the bed leg straps.\*

- 1 Wrap the bed legs (front & back) together tightly using the bed leg straps.
- 2 Fasten the straps to prevent movement & maintain stability.



# Installation Guide

## Assembling the headboard bracket (optional)

### IMPORTANT!

- Failure to follow the installation steps as they appear in this guide could result in damage to your adjustable bed.
- For safety reasons, lifting of the adjustable bed must always be performed by two (2) people; and the unit should always be on a flat surface.
- Make sure to position the bottom of the headboard cross member no more than 3 inches (76.2 mm) between the headboard and the top of the mattress.

- 1 Turn the adjustable bed over with the top side facing downward.
- 2 Remove the leg from the head section of the adjustable bed by turning the leg counter-clockwise.
- 3 Slide the inner headboard bracket over the hole for the leg attachment. (The bracket opening should face away from the adjustable bed).
- 4 Screw the leg back in, turning clockwise. This will secure the inner headboard bracket to the adjustable bed.
- 5 Place the open side of the outer headboard bracket onto the exposed square tube of the inner headboard bracket to create a tight fit.
- 6 Insert a retainer bolt fitted with a 5/16 inch washer into the outer headboard bracket and through the inner headboard bracket. Tighten the 5/16 inch washer and 5/16 inch nut with an Allen key wrench. Leave loose enough for adjusting.
- 7 Repeat steps 2 to 6 on the other side of the adjustable bed.
- 8 When the headboard brackets are assembled, make sure there is a space of 1.5 inches (38.1 mm) to 2 inches (50.8 mm) between the edge of the adjustable bed and the headboard brackets.
- 9 Securely fasten the headboard bolts (not included with your adjustable bed) to the end of the headboard bracket assembly.
- 10 If you need to adjust the headboard brackets, unscrew the bolts holding the outer headboard bracket and move them the necessary distance. Reinstall the bolts and tighten securely.





Place your mattress on the adjustable bed surface.  
Your adjustable bed and headboard installation is now complete.

# Remote Control Operation Guide



## Head, Lumbar, and Foot Position Adjustments (3, 4, 8)

Press the UP  or DOWN  button to raise or lower the head, lumbar, and foot sections of your adjustable bed. The premium "Seat Extender" feature automatically synchronizes with the head adjustments.

## Presets

### Lounge (1)

Press this button to activate the lounge position. This preset adjusts the bed into a chaise lounge position to help remove stress and tension from your lower back.

### Incline (2)

Press this button to activate the incline position. This preset raises the head section to an ideal position for watching TV, reading, or laptop use.

### Zero Gravity (6)

Press this button to activate the zero gravity position. This preset position elevates the legs slightly higher than the chest, in effect, allowing the blood to flow back to the heart to help reduce stress and fatigue.

### Program (7)

Press this button together with a preset button to override factory default presets with your customized presets. For more information, see "Customizing the preset buttons" on page 11.

### Flat (9)

Press and hold this button to return the bed to a flat position.

#### NOTES:

- If massage is on and the Flat button is pressed, massage will stop operating during the lowering of the bed.
- Every time you turn on your adjustable bed, make sure it is in its Flat position before using so the system can properly initialize.




### Anti-Snore (10)

Press this button to gently raise the head section and allow easier air intake which can help reduce snoring.

# Remote Control Operation Guide

## Massage

### Start Massage (11)

Press the UP  button to activate the massage feature on the bed. Intensity starts at level 3. Press the UP  or DOWN  button to gradually increase or decrease the intensity of the massage.

#### NOTES:

- Decreasing the massage to the lowest intensity level stops any active massage.
- This feature has an Auto Shutoff Timer that automatically turns off the massage after 15 minutes of continuous use.

### Wave Modes (12)

Press this button to activate and select from different massage feels. The LED lights indicate the mode you have selected. You can also press this button to turn massage on. Intensity for the wave modes start at level 4.

### Stop Massage (5)

Press this button to disable any active massage.

## Under Bed Light (13)

Press this button to turn the under bed lighting on, helping you safely navigate in and out of bed during the night. The under bed light has seven (7) colors. Press this button multiple times to change colors. Press and hold to turn the under bed light off.

## Understanding the remote control features

- The adjustable bed uses BLE (Bluetooth Low Energy) remote control system.
- The buttons are backlit when pressed to aid in the visibility of the remote control in low-light environments.
- It is not necessary to face the receiver when operating the remote control. Remote signal is best transmitted within 9 feet (3 meters) of the bed.

**NOTE:** The bed may show minor intermittent performance because of typical radio frequency interference. This is normal in the operation of the bed, not a defect.

## Customizing the preset buttons

You can store new head and foot positions by customizing the preset buttons: Incline, Lounge, and Zero Gravity. These can be reprogrammed with your desired positions at any time. For safety reasons, the Anti-Snore and Flat buttons cannot be customized.

- 1 Move the head and/or foot sections to your desired position.
- 2 Press and hold the **Program** button and any of the preset buttons at the same time for 2.5 seconds.

The new bed position is now stored in your selected preset button overriding the factory default.

To restore the presets to their factory settings, see "Resetting your system" on page 12.



# Remote Control Operation Guide

## Synchronizing two beds for tandem operation

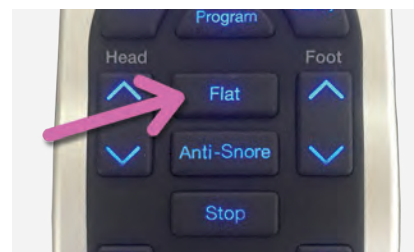
To operate two adjustable beds simultaneously, you must pair both beds (Bed A and Bed B) to one remote control (Remote A).

- 1 Plug both Bed A and Bed B to working and grounded electrical outlets. A surge protector is recommended.
- 2 Before starting the sync process, make sure Bed A and Bed B are in a flat position. Press the **Flat** button on Remote A and Remote B to align the beds properly.
- 3 On the power supply unit or control box of Bed B, press and hold the Learn button for three (3) seconds. The indicator LED will blink three (3) times then turn off. At this time, the control box is in pairing mode.
- 4 On Remote A, press and hold the **Flat** and massage **Stop** buttons for four (4) seconds.

When the pairing process is successful, the indicator LED on the control box or power supply will blink once and then remain on. This ends the pairing mode.

Bed A and Bed B now functions using Remote A. Pairing of the two adjustable beds for tandem operation is complete.

**NOTE:** When doing a tandem operation, both Bed A and Bed B should be plugged into a working electrical outlet.



Learn button on the power supply unit.



## Resetting your system

Resetting the system is sometimes necessary to:

- Restore the system in its factory setting. For example, reset the customizations on the preset buttons.
- Clear a system error.
- Synchronize tandem units that no longer work in tandem.
- Change a tandem system to single system or to two independent systems.

- 1 On the remote control, press and hold the **Stop** button while removing and then reinstalling one of the three (3) batteries.

The remote control reboots for seven (7) seconds. Keep pressing the **Stop** button until the LED lights blink five (5) times.

All pairing information and customized settings on the remote control and control box are now cleared or returned to their default settings.

- 2 Pair the remote control with the control box again. Do the pairing steps in "Synchronizing two beds for tandem operation" on your adjustable bed.



# Special Functions

## Using the mounted USB ports

The convenient USB ports located on each side of your adjustable bed provides easy access for charging today's tech devices.



## Activating the emergency power down feature

The power supply unit on your adjustable bed supports the emergency power down feature if a power failure occurs while the head, lumbar, and/or foot sections are raised.

- 1 Locate and remove the cover on the 9V battery compartment in the power supply unit.
- 2 Install two (2) alkaline 9V batteries (not included with the adjustable bed).
- 3 Replace the battery cover.
- 4 When the 9V batteries are installed and a power failure occurs, press and hold the button on the power supply unit until the bed returns to a flat position.

**NOTE:** The two (2) 9V batteries are for single use only. After lowering the adjustable bed once during a power failure, replace with a new set of batteries.



## Connecting your bed to a smart device

Your adjustable bed is equipped with the Bluetooth technology that enables your iOS or Android smart device to interact with your bed through the Rize Contempo III mobile application.

- 1 Make sure that your adjustable bed is plugged to a working and grounded electrical outlet and the control box is on.
- 2 Download and install the Rize Contempo III mobile application from the App Store or Google Play Store.
- 3 For iOS users, turn on your Bluetooth. For Android users, turn on your Bluetooth and Location settings.
- 4 From the app Settings page, select your adjustable bed from the list of devices discovered by the application.

Once connected, you may now operate your adjustable bed using your smart device.

**NOTE:** The remote control cannot be used while the adjustable bed is connected to the application.



# Troubleshooting

---

In the event the adjustable bed fails to operate, investigate the symptoms and possible solutions below.

## SYMPTOM

## SOLUTIONS

**The adjustable bed does not respond when the remote is used. Remote control led illuminates and appears to be normal.**

- Make sure the remote control is paired with the adjustable bed.
- Check that the power cord is plugged into a working and grounded electrical outlet. Unplug the power cord from the outlet. After 30 seconds, plug it back in. Press any button on the remote control and hold until light on the remote control illuminates.

**No features or function of the adjustable bed activates.**

- Make sure the remote control is paired with the adjustable bed.
- Check that the power cord is plugged into a working and grounded electrical outlet. Unplug the power cord from the outlet. After 30 seconds, plug it back in. Press any button on the remote control and hold until light on the remote control illuminates.
- Check that the surge protection device or electrical outlet is not defective. Test the outlet by plugging in another working appliance.

**Remote control does not work or light up.**

- Check if the remote buttons light up when pressed. If not, replace the batteries.
- Remove batteries. Leave them out for 30 seconds before putting them back into the remote control.
- Scratch the terminals inside the remote's battery compartment with a coin or key.
- Make sure batteries are properly installed. Follow the markings on the battery compartment.

# Troubleshooting

---

In the event the adjustable bed fails to operate, investigate the symptoms and possible solutions below.

## SYMPTOM

## SOLUTIONS

**Head or foot section elevates adjustable bed but does not return to flat position.**

- Your adjustable bed may be obstructed preventing smooth operation. Remove obstructions from around and under the bed.
- Check that the head section is not too close to the wall.
- If a headboard is installed, check that it is not too close to the edge of the mattress. Make sure there is enough distance between the headboard bracket and the mattress.

**Head or foot lift function has minor interference during operation.**

- Check the batteries in the remote control. Replace with new batteries, if necessary.
- Make sure that you are following the duty cycle of the motors. Do not operate for more than two minutes over a 20-minute period or approximately 10% duty cycle.
- Press the lift buttons firmly and accurately.
- Wireless remote control may be experiencing common radio frequency interference from other radio transmitting devices. Wait several seconds and then try pressing the lift buttons again.

**A clicking noise is heard under the bed when raising or lowering the sections.**

This is normal. The lift motors click when they are engaged. No action is required.

# Troubleshooting

---

In the event the adjustable bed fails to operate, investigate the symptoms and possible solutions below.

## SYMPTOM

## SOLUTIONS

**The adjustable bed is squeaking.**

1. Remove nuts, bolts, and white bushings.
2. Lubricate them by applying the grease with a cotton swab. (Lubrication can be obtained by contacting Customatic's Customer Care Center).
3. When placing lubricated nuts, bolts, and white bushings back onto the adjustable bed, make sure there is a looser tightening on the nut.
4. Additional solution: After completing these steps, spray the nuts, bolts, and white bushings with a lubricant.

**The adjustable bed stutters when in motion.**

1. Clear any clutter or obstructions under and around the adjustable bed. Radio frequency interference from other remotes or electronic devices may affect normal operation.
2. Check the batteries in the remote.
3. Press the lift buttons firmly and accurately.

**Split or tandem system is out of sync. Only one of the two adjustable bed raises or both beds raise but one side is higher than the other.**

Sync one remote to both adjustable beds. For more information, see "Synchronizing two beds for tandem operation" on page 12.

# Troubleshooting

---

In the event the adjustable bed fails to operate, investigate the symptoms and possible solutions below.

## SYMPTOM

## SOLUTIONS

**Massage motors seem excessively loud during operation.**

- Hard surface flooring may cause added vibration. To correct, place carpet pieces or rubber furniture cups under each leg or caster of the bed.
- Elevate the head or foot section a short distance (using the remote control) to realign the lift/lower mechanisms with the bed support platform.
- Check that the bed is not in direct contact with a wall, nightstand, or other object that may cause vibration or noise.
- If the adjustable bed is installed on top of a bed, check that the massage motors are not causing the bed (or bed components) to vibrate or rattle.
- Check that the headboard attachment hardware is tightened firmly (if used).

**Under bed lights are alternating.**

1. Unplug the adjustable bed where the light is not working.
2. Turn the underbed lighting off using remote.
3. Plug the adjustable bed back into the electrical outlet. Wait for one minute.
4. Press any button on the remote. Wait for three (3) seconds.
5. Lights should be working together now.

# Warranty

---

## 5-Year Limited Warranty For Adjustable Beds

PPJ, LLC ("CUSTOMATIC") WARRANTS THAT IT WILL, AT CUSTOMATIC'S OPTION, REPLACE OR REPAIR PURCHASER'S CUSTOMATIC® SYSTEM IF IT IS DEFECTIVE DUE TO FAULTY WORKMANSHIP OR MATERIALS, SUBJECT TO THE LIMITATIONS DESCRIBED IN THIS WARRANTY. CUSTOMATIC UNDERTAKES NO RESPONSIBILITY FOR THE QUALITY OF THE GOODS EXCEPT AS OTHERWISE PROVIDED IN THIS CONTRACT. THERE ARE NO WARRANTIES THAT EXTEND BEYOND THE DESCRIPTION ON THE FACE THEREOF.

THIS WARRANTY APPLIES ONLY TO THE MODELS OF THE CUSTOMATIC SYSTEM LINE. THESE MODELS MAY BE IDENTIFIED BY REFERENCE TO THE SERIAL NUMBER ON THE PRODUCT.

### YEARS 1 THROUGH 5: FULL COVERAGE OF PARTS AND LABOR

CUSTOMATIC models are warranted against defects in the workmanship or materials for a period of five (5) years from the Warranty commencement date. During these first five years of the Warranty, the entire product is so covered, including factory supplied electronics, electrical components, drive motors, Wi-Fi module, power supply and power supply cords, and massage motors. Upon notice during the first through fifth year from the Warranty commencement date, CUSTOMATIC will send replacement parts to the Purchaser, at no cost, in order to replace any such defective part. In addition, CUSTOMATIC will pay all authorized labor and transportation costs associated with the repair or replacement of any parts which CUSTOMATIC determines to be defective. This five (5) year Warranty shall not apply if the Purchaser does not return any and all defective parts to CUSTOMATIC within 15 days of Purchaser's receipt of such replacement parts furnished. Return of the adjustable bed, however, should it need to be replaced, may be required.

In no instance will this Warranty cover any damage attributable to misuse or to normal wear and tear or to excessive weight placed upon the product. Nor will this Warranty cover any Purchaser other than the original Purchaser nor will it cover product purchased from an unauthorized third party. If you are not the original Purchaser of this product, you take "as is" and "with all faults." Purchases of "Floor Models" are regarded "as is" products & subject to the terms thereof. If you did not purchase this CUSTOMATIC System directly from CUSTOMATIC or any of its approved authorized distributor/retailer dealers, we will require proof of purchase from you demonstrating that you are the original Purchaser and are eligible to make a valid claim under this Warranty.

### FRAME ONLY—LIFETIME WARRANTY

Notwithstanding the above, CUSTOMATIC extends a LIFETIME WARRANTY on the frame itself used in this product. Specifically, CUSTOMATIC warrants that for a full 20 years, the estimated life of the frame, any defect in the workmanship or the materials used in the frame itself shall be covered. The 20-year time span will be dated from the commencement of this Warranty. For purposes of this Lifetime Warranty, the frame consists of the metal structure

of the adjustable bed and specifically excludes its cover, its side rails, decking and legs, actuator lift motors, massage motors, control box, remote controls, Wi-Fi modules, power supply, and any power supply cords. Return of the frame should it need to be replaced, is not required.

### ADDITIONAL TERMS AND CONDITIONS

In no instance will this Warranty cover any damage attributable to misuse or to normal wear and tear or to excessive weight placed upon the product. Nor will this Warranty cover any Purchaser other than the original Purchaser nor will it cover product purchased from an unauthorized third party. If you are not the original Purchaser of this product, you take "as is" and "with all faults." If you did not purchase this CUSTOMATIC System directly from CUSTOMATIC or an Authorized Dealer, we will require proof of purchase from you demonstrating that you are the original Purchaser and eligible to make a valid claim under this Warranty.

This Warranty does not include coverage for damage caused by the Purchaser or by other users, if the product has been used in a manner inconsistent with the operation and maintenance procedures outlined in the Owner's Manual, this Warranty, or any other applicable document published or approved by CUSTOMATIC.

Nor does it include coverage if the product has been repaired or modified by the Purchaser or by an unauthorized third party or if the product has been damaged in transit.

This Warranty does not apply to damage to mattresses, fabric, cables, electrical cords or items supplied by Resellers, as defined below. Contact the Reseller or other appropriate party for Warranty information on these items. Nor does this Warranty apply to any unnecessary service calls, including costs for in-home service calls solely for the purpose of educating the consumer about the unit or finding an unsatisfactory power connection. In addition, if the recommended weight restrictions are not followed (850 lbs. on all sizes), this Warranty is void.

Replacement parts may be new or reconditioned at CUSTOMATIC's discretion.

Except for the Lifetime Warranty provided for the frame of this product, there is no Warranty at all after five years, dating from commencement of this Limited Warranty.

### Additional Limitations on Warranty Coverage

In the event a Warranty claim is filed and a Warranty replacement is deemed necessary, Purchaser will be required to surrender the original product, including any components, to CUSTOMATIC at the time of the replacement. Return of the adjustable bed, however, should it need to be replaced, may be required.

Repairs to or replacement of the CUSTOMATIC System or its components under the terms of this Limited Warranty will apply to the original Warranty period and will not serve to extend such period. This Warranty begins on the "Warranty

# Registration



## WARRANTY REGISTRATION FORM

NAME \_\_\_\_\_  
PHONE \_\_\_\_\_  
ADDRESS \_\_\_\_\_  
CITY \_\_\_\_\_  
STATE \_\_\_\_\_ ZIP CODE \_\_\_\_\_  
EMAIL ADDRESS \_\_\_\_\_  
STORE WHERE PURCHASED \_\_\_\_\_  
SERIAL NO. \_\_\_\_\_  
INVOICE NO. \_\_\_\_\_  
MODEL NO. \_\_\_\_\_

### SURVEY

GENDER:   \_\_ M       \_\_ F

AGE:       \_\_ 18-30   \_\_ 31-40   \_\_ 41-50  
          \_\_ 51-60   \_\_ 61-70   \_\_ 71 & up

Reason for purchasing an adjustable bed:  
\_\_\_ Health       \_\_\_ Comfort       \_\_\_ Other

How did you find out about our beds?  
\_\_\_ Advertising   \_\_\_ A friend  
\_\_\_ Store       \_\_\_ Article  
\_\_\_ Internet       \_\_\_ Other

POWERED BY  
**CUSTOMATIC® TECHNOLOGIES™**

Please mail to:  
**CUSTOMATIC® TECHNOLOGIES™**  
Customer Care Center  
550 Crescent Blvd., Gloucester City, NJ 08030

*You can also register your bed online at [www.rizebeds.com](http://www.rizebeds.com).*

commencement date" which is the date of purchase for new unused products.

If you did not purchase this CUSTOMATIC System directly from CUSTOMATIC or an Authorized Dealer, proof of purchase will be required to demonstrate that you are the original Purchaser and eligible to make a valid claim under this Warranty. If original proof of purchase is not provided by the Purchaser, CUSTOMATIC reserves the right to determine if the unit is covered, or is not covered, by this Warranty and may use the manufacturing date as the Warranty commencement date.

The decision to repair or to replace defective parts under this Limited Warranty shall be made by CUSTOMATIC at its option and at its sole discretion. Except for the Lifetime Warranty provided for the frame of this product, there is no Warranty at all after five years, dating from commencement of this Limited Warranty.

**CUSTOMATIC SHALL NOT BE LIABLE FOR INCIDENTAL OR CONSEQUENTIAL DAMAGES RESULTING FROM THE USE OF THIS PRODUCT OR ARISING OUT OF ANY BREACH OF THIS WARRANTY. THE EXCLUSIVE**

REMEDY FOR BREACH OF THIS WARRANTY SHALL BE REPLACEMENT OR CREDIT TOWARDS REPLACEMENT AS SET FORTH HEREIN. THERE ARE NO EXPRESS OR IMPLIED WARRANTIES, INCLUDING IMPLIED WARRANTIES OF MERCHANTABILITY AND FITNESS FOR A PARTICULAR PURPOSE, OTHER THAN THE WARRANTY DESCRIBED ON THE FACE OF THIS LIMITED WARRANTY.

Some states do not allow the exclusion or limitation of incidental or consequential damages, so the above limitation or exclusion may not apply to every Purchaser. This Warranty gives the Purchaser specific legal rights, and the Purchaser may also have other legal rights, which may vary from state to state. This Warranty is valid in all 50 states, Puerto Rico, and Canada.

If you, the Purchaser, experience any problem with your CUSTOMATIC System during the Warranty period, please consult the troubleshooting section of your Owner's Manual. If problem persists, please contact CUSTOMATIC's Customer Service Department by calling the telephone number located in your manual.



POWERED BY CUSTOMATIC® TECHNOLOGIES™

IF YOU EXPERIENCE ANY TROUBLE WITH YOUR ADJUSTABLE BED WITHIN THE WARRANTY PERIOD,  
PLEASE CONSULT THE TROUBLESHOOTING GUIDE PROVIDED WITH YOUR BED AND ONLINE, IF APPLICABLE.

IF PROBLEMS PERSIST, PLEASE CALL:

CUSTOMER SERVICE TOLL FREE NUMBER

**1-843-800-8372**

Please have your receipt ready and available.

***THANK YOU AND ENJOY YOUR ADJUSTABLE BED!***