

AltimateMedical

P.O. Box 180
262 West 1st St
Morton, MN 56270
Toll Free: 800.342.8968 or 507.697.6393
Fax Free: 877.342.8968 or 507.697.6900
email: info@easystand.com
www.easystand.com



EasyStand[™]



Standing technology should only be used under the guidance of a physician with recommendations for standing program protocol and any medical precautions. Standing programs should be monitored by the attending therapist. AMI maintains a policy of continual product improvement and reserves the right to change features, specifications, and prices without prior notification. Check with AMI for latest info.
FORM MANAEVM 0608 Copyright © 2008 Altimate Medical, Inc. All rights reserved. Printed in the U.S.A.

EasyStand[™]

Evolv[™]
Youth, Adult, and XT

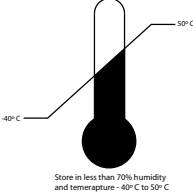


Owner's Manual

SYMBOL LEGEND



ATTENTION, consult accompanying documents.



ENVIRONMENTAL CONDITIONS



TYPE B APPLIED PART



PINCHPOINT



DATE OF MANUFACTURE



FOOT TRAP

SN

SERIAL NUMBER



Please be environmentally responsible and recycle this product through your recycling facility at its end of life.

Afin de préserver l’environnement, veuillez confier ce produit à votre centre de recyclage à la fin de sa durée de vie.

Nachdem dieses Produkt ausgedient hat, entsorgen Sie es bitte auf umweltfreundliche Weise, indem Sie es zu der entsprechenden Recyclingstelle bringen.

Wees a.u.b. milieubewust en recycleer dit product via uw recycleerder na het verstrijken van de levensduur.

Sea responsable con respecto al medio ambiente y recicle este producto al finalizar su vida útil en el lugar de reciclaje correspondiente.

Siate responsabili verso l’ambiente e riciclate questo prodotto, al termine della sua vita d’uso, presso la vostra sede di riciclaggio.

Kierrätä tämä tuote sen käyttöiän lopussa ympäristövastuullisella tavalla paikallisella kierrätyslaitoksella.

Var miljömedveten och återvinn denna produkt efter dess användning.

Vi ber deg ta hensyn til miljøet og resyklere dette produktet ved hjelp av de rette resykleringsfasilitetene når produktet ikke lenger kan brukes.

Vis venligst hensyn til miljøet ved at levere produktet til det nærmeste genbrugsanlæg, når det ikke længere fungerer.

Por favor, assum a responsabilidade ambiental, reciclando este produto em suas instalações de reciclagem no final de sua vida útil.

Limited Warranty

This warranty is extended only to the original purchaser/customer (or supplier non consumer who does not buy or resell). Altimate Medical, Inc. (AMI) warrants the EasyStand Evolv against defects in materials and workmanship as listed below.

- Steel Frames - 5 year warranty
- Hydraulic Actuator - 2 year warranty
- Upholstered components, plastic pads, rubber parts, painted surfaces, bearings and other parts not specifically identified above - 90 day warranty

Warranty on Electric lift option components is as follows:

- Actuator & Hand Pendant – 2 year warranty
- Control Box & Battery – 90 days
- Battery Charger – 90 days

The warranty period commences for the consumer on the purchase date from the seller/supplier. If the product is rented or otherwise not sold to a consumer, the warranty period commences from the date of invoice from AMI. Any product proven to AMI satisfaction to be defective and within warranty period, shall be repaired or replaced at AMI’s option.

AMI’S SOLE OBLIGATION AND YOUR EXCLUSIVE REMEDY UNDER THIS WARRANTY SHALL BE LIMITED TO SUCH REPAIR AND/OR REPLACEMENT. This warranty does not include any labor charges incurred in replacement parts installation. Freight charges to factory are at the expense of consumer to seller. Return freight charges will be prepaid by AMI. For warranty service, please contact the authorized supplier from whom you purchased your AMI product. In the event you do not receive satisfactory warranty service, please write directly to AMI at the address below. Do not return products to our factory without prior authorization.

LIMITATIONS AND EXCLUSIONS: The foregoing warranty shall not apply to serial numbered products if the serial number has been removed or defaced. Products subject to negligence, abuse, misuse, improper operation, improper maintenance, improper storage, or damages beyond AMI’s control are not covered by this warranty, and that evaluation will be solely determined by AMI. The warranty shall not apply to problems arising from normal wear or failure to follow instructions. The warranty will be void if parts not manufactured by AMI or parts not complying with original equipment specifications are added to an AMI product.

THE FOREGOING WARRANTY IS EXCLUSIVE AND IN LIEU OF ALL OTHER EXPRESS WARRANTIES. AMI SHALL NOT BE LIABLE FOR ANY CONSEQUENTIAL OR INCIDENTAL DAMAGES WHATSOEVER.

AMI maintains a policy of continual product improvement and reserves the right to change features, specifications, and prices without prior notification. Check with AMI for latest information.

Altimate Medical, Inc., P.O. Box 180, 262 W. 1st St., Morton, MN 56270 USA
Phone: 507•697•6393 Fax: 507•697•6900 800•342•8968
www.easystand.com info@easystand.com

Environmental Issues

After life of the product:

- Recycle in accordance with the recycling codes of your country.
- Recycle all metal parts.
- Plastic parts should be disposed of or recycled according to the directive in your country.
- Please inquire at your local disposal management and recycling center for local codes.
- Return hydraulic actuator to Altimate Medical, Inc.

Standing Progress Log



Client's Name:_____ Diagnosis:_____

[illegible]

During the above standing program, the client experienced positive changes in these areas:
☐ ROM ☐ Reduced Spasms ☐ Bowel ☐ Bladder ☐ Respiratory ☐ Improved Upper Body Balance ☐ Psychological Boost

Table of Contents

Introduction	1
Safety Precautions	2
Basic Unit Assembly-Evolv	3
Configuration Assembly	
Glider	7
Shadow Tray	9
Mobile	11
Option Assembly	
Pow'r Up Lift Option	15
Other Options	19
Basic Unit Reference Drawing-Evolv/Evolv E3 . . .	28
Evolv Options & Parts Detail	29
Adjusting Your Evolv	31
Shadow Tray Adjustments	33
Glider Adjustments	34
Perfect Fit Guide	35
Transferring & Standing	36
Maintenance	37
Specifications	38
Standing Log	39
Limited Warranty	40

Videos on EasyStand Evolv assembly & fitting can be viewed at www.easystand.com/videos

Introduction

Congratulations on your purchase of the EasyStand Evolv standing frame! We at Altimate Medical have designed the EasyStand Evolv with your comfort and happiness in mind.

This manual is an integral part of your standing system and should be read completely and thoroughly by anyone that will be operating the unit.

This will ensure that the EasyStand Evolv is assembled properly and used in the most beneficial manner.

AMI recommends that an attendant be present when the EasyStand Evolv is being used. Should any problem arise that you cannot solve by reading this manual, please contact your local supplier or call Altimate Medical Inc. at 800-342-8968 or 507-697-6393.

It is important and necessary that you inspect your EasyStand Evolv periodically to assure that it is in safe operating condition. Minor adjustments can be made by the operator. However, replacement of worn parts, major adjustments, or any other important corrections should be handled by an authorized supplier or service center. Only Altimate Medical, Inc. approved replacement parts should be used to ensure safety and performance.

Do not use the EasyStand Evolv without consulting your physician.

Failure to consult a qualified physician prior to using the EasyStand Evolv could lead to severe medical problems. We recommend that a good standing program be established and supervised by a qualified physician or physical therapist.

Date Purchased _____ Serial # _____

Evolv Youth, Adult, & XT Specifications

Basic Units

Height Range		
- Youth	4'0"-5'6"	122-168cm
- Adult	5'0"-6'2"	152-188cm
- XT	6'0"-6'10"	183-208cm
Weight Limit		
- Youth	200 lbs.	90kg
- Adult	280 lbs.	127kg
- XT	350 lbs.	159kg
Seat Depth Range <i>(from seat pivot)</i>		
- Youth	14"-19"	36-48cm
- Adult	16"-21"	41-53cm
- XT	19"-24"	48-61cm
Seat to Footplate Range <i>(from seat pivot)</i>		
- Youth	11"-18"	28-46cm
- Adult	14"-21"	36-53cm
- XT	17"-23"	43-58cm
Kneepad Depth Range <i>(from seat pivot)</i>		
- Youth/Adult	3.5"-5.75"	9-15cm
- XT	4.75"-7"	12-18cm
Seat Height		
- Youth/Adult	21.5"	55cm
- XT	23.5"	60cm
Table/Chest Pad Depth Range <i>(from seat pivot)</i>		
- Youth/Adult	0-10.5"	0-27cm
- XT	1"-11"	3-28cm
Standard Table Height Range <i>(from seat pivot)</i>		
- Youth/Adult	15.5"-30.5"	39-77cm
- XT	14.5"-31.5"	37-80cm
Knee Width <i>(center to center)</i>		
- Youth/Adult/XT	9"	23cm
Footprint <i>(caster to caster)</i>		
- Youth/Adult	25"x33"	64x84cm
- XT	27"x37.5"	69x95cm
Weight of Basic Unit		
-Youth	101 lbs.	46kg
-Adult	104 lbs.	47kg
- XT	112 lbs.	51kg
Frame Color		
Charcoal		
Standard Upholstery Color		
Black		
Standard Table Size		
21"x24"		
53x61cm		

Optional Configurations

Glider

Seat to Footplate Range		
-from seat pivot	15"-18"	38-46cm
Seat Height		
	22.5"	57cm
Chest Pad Depth Range		
-from seat pivot	5"-15.5"	13-39cm
Knee Width		
-center to center	10"	25cm
Footprint		
-caster to caster	25"x38"	64x97cm
Weight of Evolv Adult w/Glider		
	174 lbs.	79kg
Glider Tray Size		
	7.5"x19"	19x48cm
Stride Length		
	20.5"	52cm
Glide Handle Height Range <i>(Youth)</i>		
-from seat pivot	24.5"-33.5"	62-85cm
	<i>(Adult)</i> 24"-41.5"	61-105cm

Shadow Tray

Chestpad Depth Range		
<i>(from back)</i>		
-standard	6"-14"	15-36cm
-extra deep	10"-18"	25-46cm
Tray Height		
<i>(from seat pivot)</i>		
-short	10.5"	27cm
-tall	13.5"	34cm
Weight of Evolv Adult w/Shadow		
	115 lbs	52kg
Chest Pad Height Range		
<i>(from seat)</i>		
-short	3.5"-6.5"	9-17cm
-tall	6.5"-9.5"	17-24cm

Mobile

Weight of Mobile Option		
	44 lbs.	20kg
Weight of Evolv Adult w/Mobile		
	141 lbs.	64kg
Mobile Tray Size		
	18"Wx19"L	46x48cm
Footprint with pushrims		
	<i>(Youth/Adult)</i>	28.5"x36"
	<i>(XT)</i>	30.5" x 40.25"
		72x91cm
		77x102cm
Wheelbase		
	<i>(Youth/Adult)</i>	29.75"
	<i>(XT)</i>	34.25"
		76cm
		87cm
Pushrim Height - from floor		
	45"	114 cm

Maintenance

- Clean the EasyStand Evolv with a mild non-abrasive disinfectant or soap and water.
- Check your EasyStand periodically to make sure that all nuts, bolts and adjustable parts are tightened securely. Failure to do so may result in parts falling off which may cause a choking hazard for children.

Hydraulic Actuator Maintenance

- An initial break-in period of approximately 50-100 full cycles is normal for the hydraulic unit. You may experience a squeaking or a less-than-smooth forward stroke. The very close fit of its mating parts gives each pump its own break-in “feel” and signature sound.
- If the pump is leaking oil, call your local AMI Supplier for a replacement. The serial number on your EasyStand will be needed.
- Do not exert excessive force on the pump handle or use the pump handle to move your EasyStand around. This may cause damage to the pump handle and/or the pump mechanism and will void any warranty.
- User maintenance is not required or recommended on the hydraulic pump. Never apply lubricant, household oil, grease, or a similar product to any part of the unit. Some compounds may react with the seals used in the manufacture of this product. This may damage the unit and will void any warranty.
- Do not exceed the rated weight limit.
- If your EasyStand was shipped to you during or exposed to a temperature of less then 50 degrees Fahrenheit, you must allow the hydraulic unit to warm up to room temperature before any use. Failure to follow this step could damage the unit and render it inoperable.
- It is sometimes not necessary to push the pump handle all the way back to lower the seat. If you have difficulty getting the seat to lower, try pushing the handle back into different positions.
- If the unit is in the standing position and unoccupied, it is necessary to apply pressure to the seat of the unit while pushing the pump handle back.

Purging The Hydraulic Actuator

The hydraulic pump on your EasyStand has a high probability of getting air trapped in the internal workings of the unit. This is usually caused by in-transit handling and is quite normal. Please follow the simple steps below, as manual hydraulic systems may never operate properly unless the entrapped air is correctly purged. The unit must be at room temperature for this procedure.

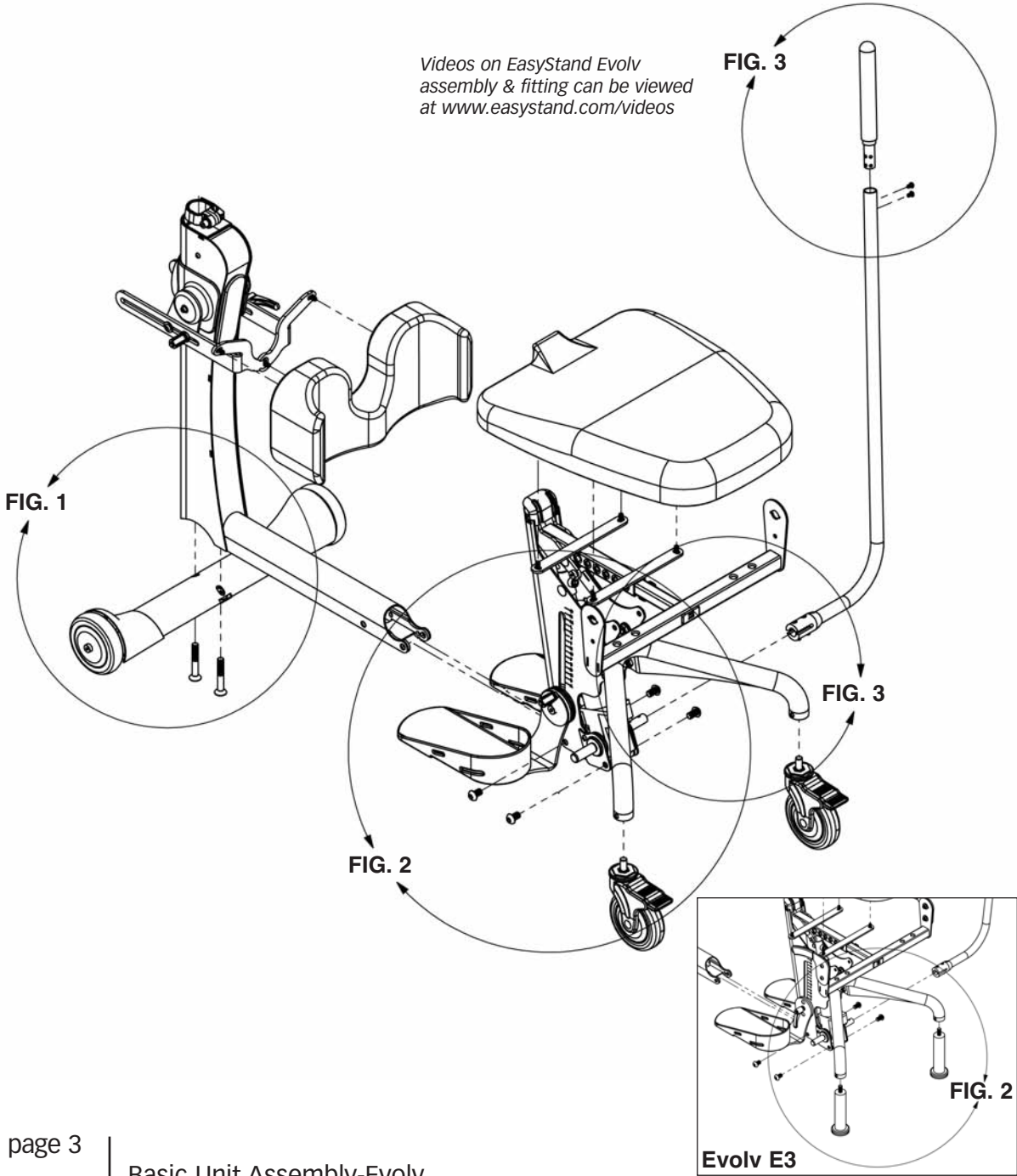
1. Pump the handle until the full extension is reached.
2. Now continue pumping the handle slowly for an additional 10 strokes. This will properly purge the system.

Safety Precautions

- If you do not meet these specifications and have not been properly fitted by a qualified therapist or physician, Altimate Medical Inc. does not recommend that you use the EasyStand Evolv.
 - Evolv Youth-** is designed to accommodate most individuals from 4'0"-5'6" (122-168 cm) and up to 200 lbs. (90 kg).
 - Evolv Adult-** is designed to accommodate most individuals from 5'0"-6'2" (152-188 cm) and up to 280 lbs. (127 kg).
 - Evolv XT-** is designed to accommodate most individuals from 6'0"-6'10" (183-209 cm) and up to 350 lbs. (159 kg).
- Altimate Medical Inc. recommends that you consult with your therapist or physician prior to starting a standing program.
- Check your EasyStand periodically to make sure that all nuts, bolts and adjustable parts are tightened securely.
- Never reposition the foot holders while you are in the standing position. Consult with your therapist or physician for proper foot placement and angle.
- If the unit was exposed to temperatures of less than 50°F (23.5°C), you must allow the unit to warm up to room temperature before use.
- Use body weight to lower the seat. Do not use excessive force.
- The EasyStand is for indoor use on level surfaces only.
- Violently thrusting in the EasyStand may cause it to tip.
- Always put the rear casters and/or wheels in the locked position before transferring into the EasyStand. Use these locks whenever you want to keep the EasyStand stationary.
- The EasyStand Evolv meets EN12182:1999 (test standard) for strength, durability and tipping stability.
- Please contact Altimate Medical Inc. for relevant clinical data and literature, strength, durability and test results as applicable.
- The EasyStand Evolv Electric Lift meets the requirements of IEC 60601-1 and 60601-2.*
- Electronic equipment can be affected by Radio Frequency Interference (RFI). **Caution** should be exercised when using portable communication equipment and other electronic devices around such equipment. If erratic behavior is noticed, use the mechanical release to lower the unit to the seated position immediately and unplug the unit until use of the interfering device is discontinued. Report all such incidents to our customer service department.*
- Altimate Medical products are specifically designed to be used with Altimate Medical accessories and options. Unless otherwise noted, accessories and options from other manufacturers have not been tested by Altimate Medical and are not recommended for use with Altimate Medical products.
- It is recommended that you remove the batteries if the equipment is not likely to be used for 6 months or greater. Furthermore, it is recommended to fully charge the batteries every 6 months or less during periods of intermittent or non-use.*
- It is recommended that the equipment be stored in air less than 70% humidity and temperatures -22 to 122 F (-30 to +50 C). Batteries must be stored between 41 and 104 degrees Fahrenheit (+5 to +40 Celsius)
- The wheel lock on the mobile option is to keep the unit in place while transferring or standing stationary and it is **not** intended to be used as a dynamic brake to stop a rolling mobile unit.
- ⚠ **Caution:** This equipment is designed to accommodate a range of users; therefore the unit has various adjustment slots and holes. Avoid placing fingers or other body parts in any of these areas.
- ⚠ **Caution:** While in use this equipment has various moving parts, familiarize yourself with your unit and avoid placing hands or fingers near any of these areas.
- ⚠ **Caution:** Advise bystanders to keep clear of the unit while in use.
- ⚠ **Warning:** Do not use the EasyStand Evolv Mobile option on an incline, it is intended for level surfaces only. Doing so may cause the unit to tip.

* Evolv Pow'r Up Lift Option Only

Videos on EasyStand Evolv assembly & fitting can be viewed at www.easystand.com/videos



Transferring & Standing

Transferring

- For proper transfer techniques, please seek professional advice from your therapist or physician.
- The kneepad does not lock in the upright position when transferring, do not grab the kneepad for support.
- Always lock the wheel locks on your wheelchair and the casters on the EasyStand Evolv before transferring.
- If you do not need assistance in transferring, position your wheelchair next to the EasyStand Evolv. Flip the armrest and knee support away to allow for increased transfer space. Make sure that the knee support is flipped up to allow you to position your feet. Complete your transfer and position your feet in the footplates. Secure the foot straps and reposition the knee and side supports.
- If required, a patient lift can be used for transferring. There are a variety of access points to accomplish the assisted transfer.
- When transferring out of the EasyStand, pump the seat up so that it is equal to or higher than the seat you are transferring back in to.

Standing

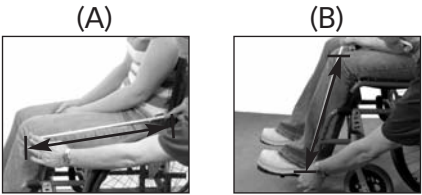
- **Please consult with your physician or therapist before starting a standing program.**
- Once transferred into the EasyStand, position your feet and the knee support and secure any straps and side supports. Push the pump handle forward with 15-25 strokes. The seat will slowly rise into the standing position. Remember that you can stop the seat anywhere between the sitting and standing position.
- ⚠ **Caution: If the back is adjusted outside of +/- 10 degrees from vertical, it is possible for the back angle adjustment knob to come into contact with the lower back tube, causing damage to the unit.**
- To return to the seated position, move and hold the pump handle toward the rear until you have reached your desired position. The seat will slowly lower until you release the handle. If you have difficulty getting the seat to lower, you may not be applying the proper pressure to the handle.
- If the unit is in the standing position and unoccupied, apply moderate pressure to the seat of the unit while holding the pump handle back. Do not use excessive force.
- ⚠ **Caution: When lowering the unit from standing to sitting, keep all hands and feet clear of the mechanism beneath the seat.**

Perfect Fit Guide

Proper positioning is needed to obtain optimum standing posture.

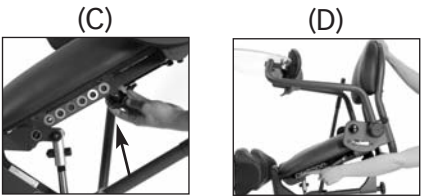
step one - measure

Before transferring into the stander, measure for approximate seat depth (A) and seat to footplate (B) settings. Use these measurements to adjust the seat depth and footplate height on the stander.



step two - seat depth

To adjust seat depth, loosen the knob under the seat (C). Depress the snap button on the adjustment tube while moving the back (D). Tighten the knob after adjusting.



step three - back angle

After achieving your desired seat depth, rotate the back angle adjustment knob (E) so the increment indicator (F) is in the green (safe) area.



step four - footplates

Loosen the ratchet handles on the footplates to adjust height and plantar/dorsi (G). The knees should be slightly lower than the hip (H). Tighten ratchet handles after positioning.



step five - positioning

If you have a Glider, skip to step seven.

Position the user's hips as close as possible to stander's hip pivot (I). To determine correct positioning, fit two fingers between the front of the seat and the back of the knee (J).



step six - kneepad

Adjust the kneepad so it fits comfortably up to the knees (K). Tighten ratchet handles after positioning.



step seven - Glider positioning

If you have an Evolv Glider, slide forward so the knees are centered in the kneepads (L). Secure calf straps.

Inspect your standing frame periodically to assure that it is in safe operating condition.

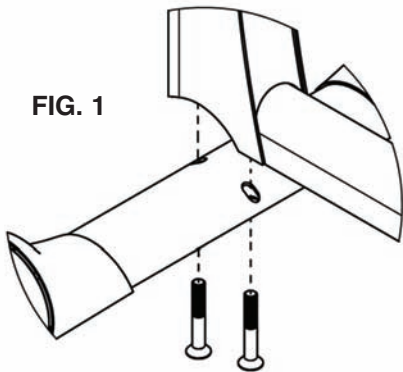
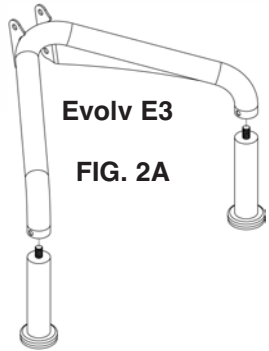


FIG. 1



Evolv E3

FIG. 2A

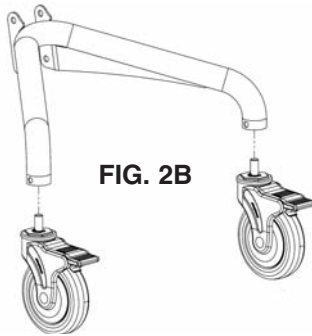


FIG. 2B

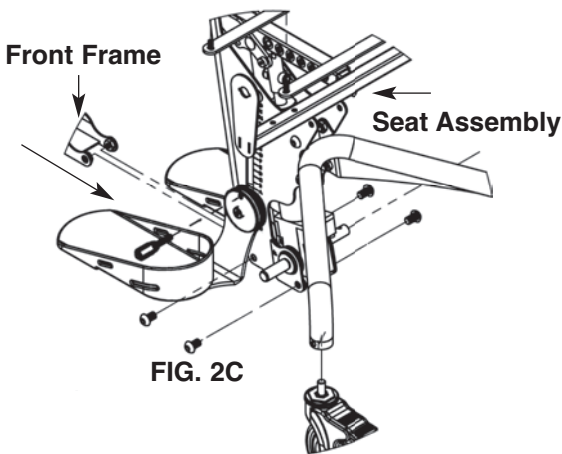


FIG. 2C

Note: If you ordered the Evolv XT, your unit will be fully assembled except for the table and back option. Refer to page 19 for the back option assembly and page 24 for the table assembly. For any other option assembly please refer to pages 9-27.

Note: If you ordered the Glider (p.7) or the Mobile (p.11) configurations, please skip ahead to the appropriate page.

FIG. 1- Attach the front caster frame to the front frame with bolts and tighten securely.

FIG. 2A- If you ordered the standard Evolv E3, attach the level glides to the rear of the unit. Hand tighten securely.

FIG. 2B- Attach the casters to the rear of the base, tighten using the wrench provided in the tool kit, do not overtighten.

FIG. 2C- Slide the front frame into the opening of the seat assembly as shown. To help with installation, place folded cardboard or a block of wood underneath the frame to support it. Start all four bolts first, then tighten securely.

Lift seat up and flip down footplates. Then insert ratchet handles (located in bag with owner's manual, E3 model will have ratchet handle already attached) into footplates. Tighten securely.

FIG. 3A- Attach the pump handle to the pump on the seat assembly with bolts and tighten securely.

FIG. 3B- Insert top of handle into pump handle and tighten securely.

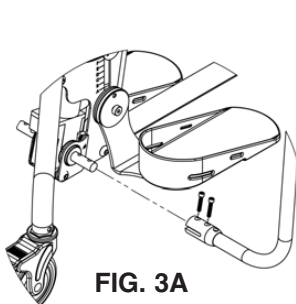


FIG. 3A

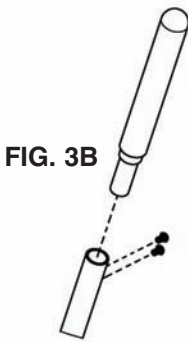
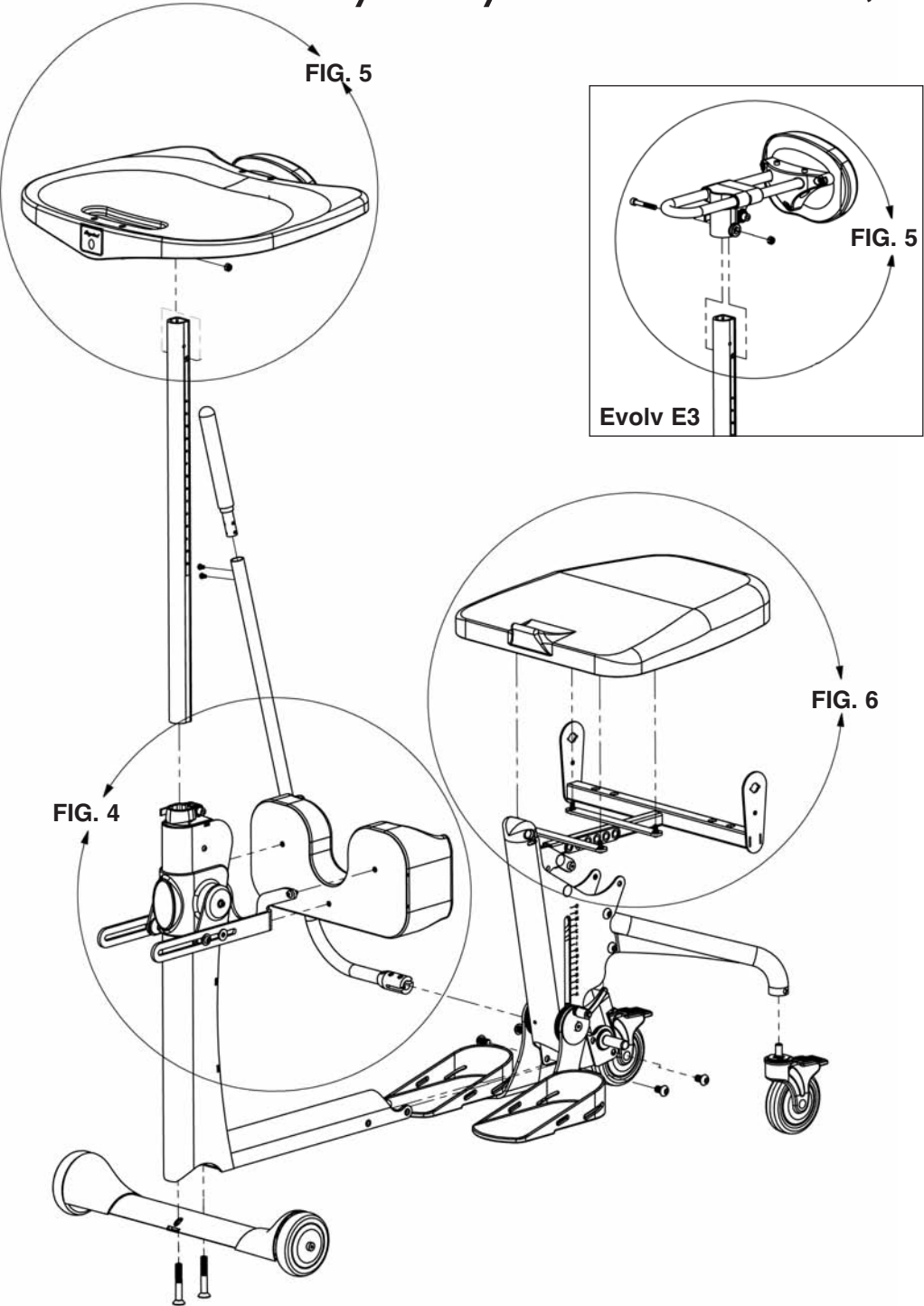


FIG. 3B

Basic Unit Assembly-EasyStand® Evolv™ (cont.)



Evolv™ Glider™ Adjustments (Glider configuration not available w/Evolv XT)

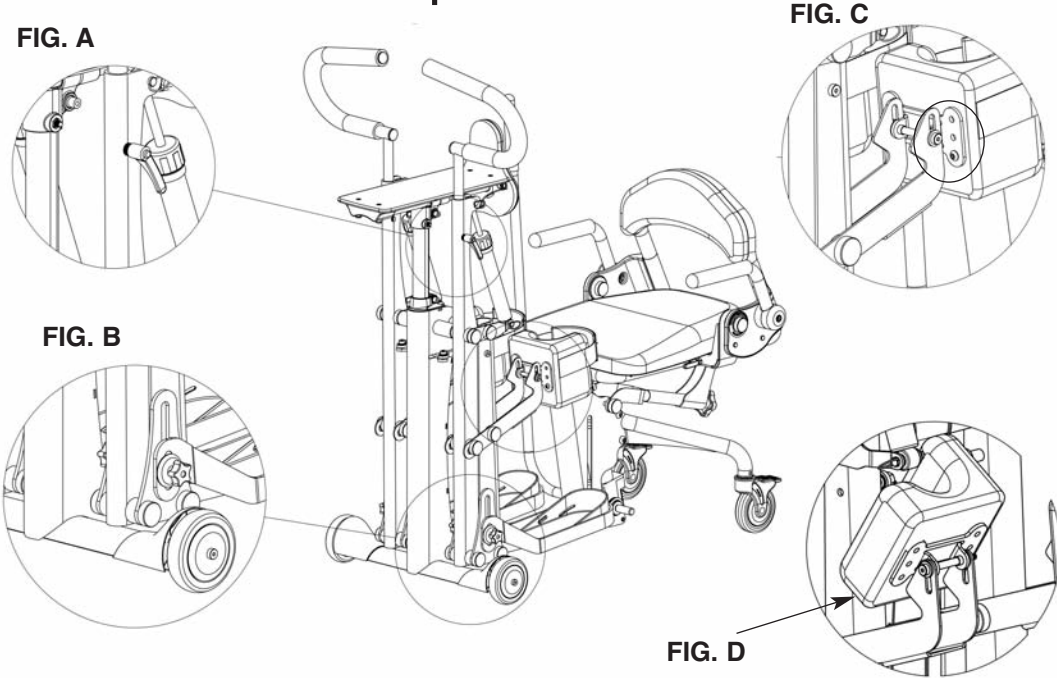


FIG. A- To adjust the height of the glide handles, loosen each clamp. Adjust the handles to the user's desired position and tighten the clamps.

The resistance cylinders are individually adjustable to provide eleven different resistance settings, turn the cap of the cylinders to your desired resistance.

FIG. B- Adjust the footplates so the user's knees are centered in the kneepads, by loosening the two knobs on each footplate (for easier access to the inside knob, swing the leg assembly forward). Tighten securely.

FIG. C- Often, the proper fit can be achieved by adjusting the footplate height. When necessary, the kneepads are independently adjustable with five adjustments. To adjust the kneepads, remove the hex key bolts from the kneepads and adjust to the desired position. Replace the bolts and tighten securely.

FIG. D- Before transferring, flip up the kneepads to allow easier access.

- ⚠ **Caution:** Never adjust kneepads or footplates while in the standing position.
- ⚠ **Caution:** While using the Glider, advise bystanders to keep hands and feet clear of the Glider mechanism.
- ⚠ **Caution:** While using the Glider, keep hands clear of the resistance cylinders' upper and lower mounting points.

Evolv™ Shadow™ Tray Adjustments

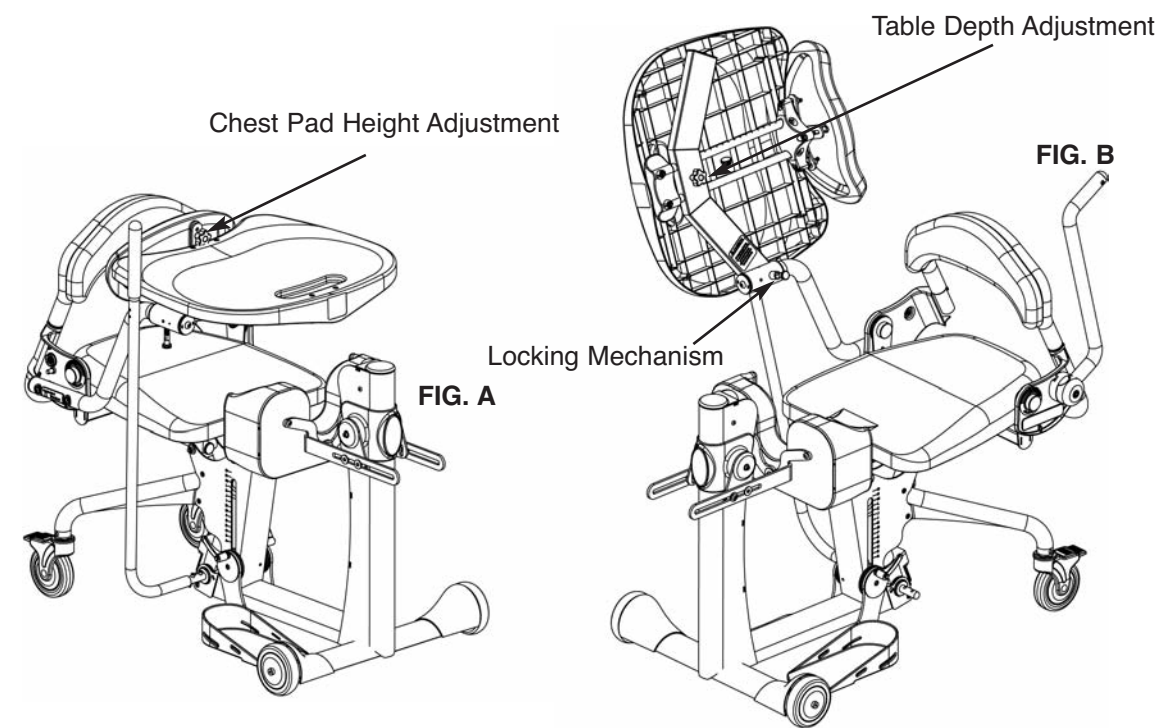


FIG. A- To adjust chest pad height, loosen knob and move to desired position. Tighten securely.

FIG. B- To adjust the depth of the front pad and table, loosen the knob located below the table. Move the front pad to the user's desired position and tighten the knob. To flip the table up, pull out and twist the locking mechanism and lift.

Caution: After flipping up the tray, be certain to put the locking mechanism back into place. Failure to do so can cause the table to fall suddenly.

Caution: Avoid placing fingers near the table tubes and chest height adjustment slots.

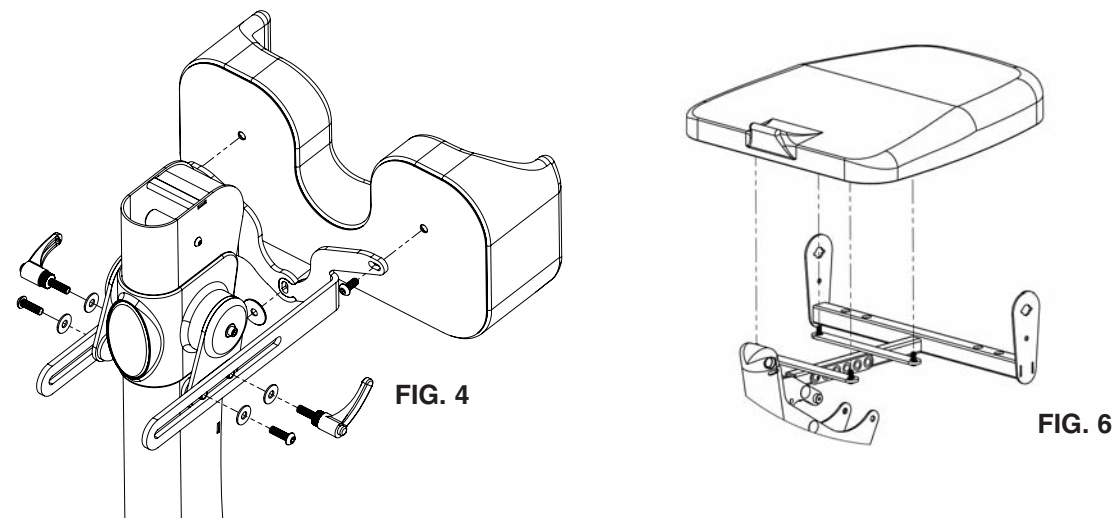
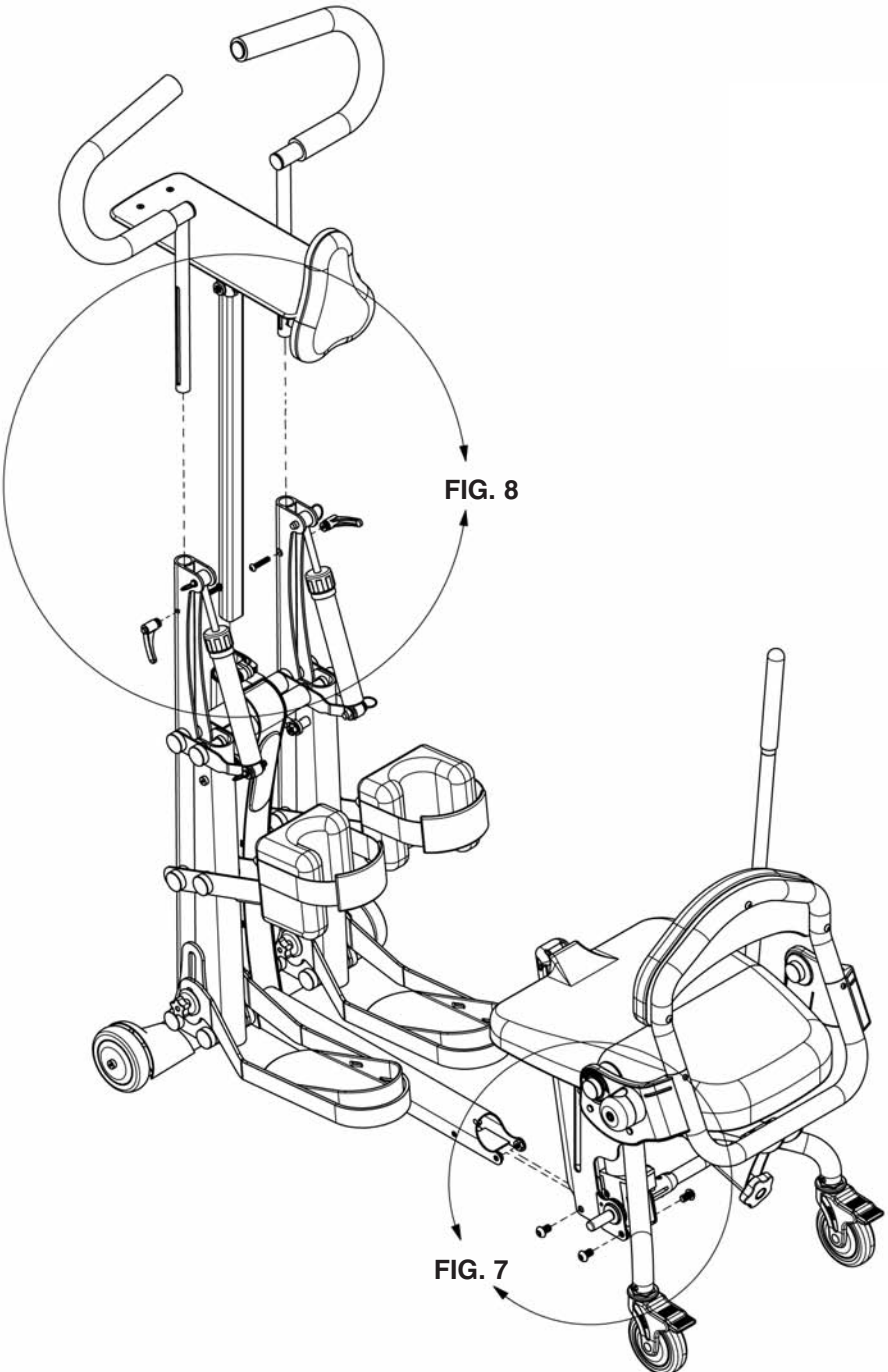


FIG. 4- Remove ratchet handle and hardware from the knee bracket. Place onto the column in the order as shown. Make sure spacer is placed in between the two steel brackets. Do NOT overtighten bolt that secures all hardware. Place the kneepad onto the bracket and insert top two bolts before inserting the middle washer and bolt. If you ordered the independent kneepads, place pads into knee bracket and insert pin, make sure the larger end of the pad is on the outside of the unit.

FIG. 5- If you ordered the Shadow Tray, please refer to p. 9-10. If you have the standard unit tray or the standard Evolv E3, insert the tray post into the front column. The table clamp on the front frame may need to be adjusted to fit the tray post into the frame. Holes in the post must face upward. Place tray onto the tray post, insert nut into slot and bolt into hole, tighten securely.

FIG. 6- If you ordered any additional options, please refer to the drawings on p.15-27. Install the seat onto the seat assembly after all the other options are added. For easier installation, pump the seat halfway up. Start all four bolts first then tighten securely.

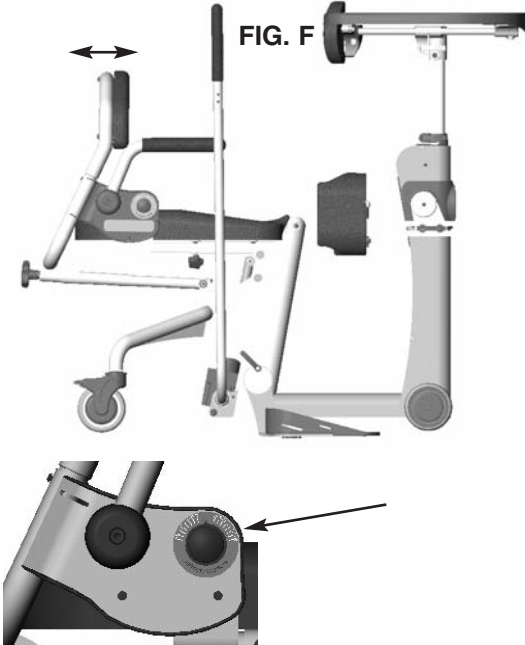
For Evolv adjustments, see p. 31.



Seat Depth/Back Angle

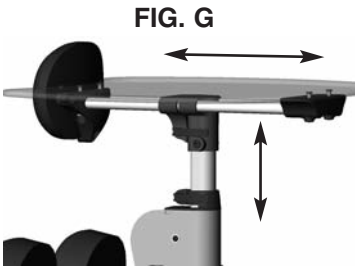
- **FIG. F-** Loosen the clamp on the seat tube located under the seat. Do not unscrew seat depth knob all the way when adjusting the seat.
- Depress the spring button and position the back so that the hip pivot is located as close as possible to the user's hips.
- Tighten the seat depth knob securely.
- Using the knob located on the following arm, adjust the back angle to vertical +/- 10 degrees.

⚠ **Caution:** If the back is adjusted outside of +/- 10 degrees from vertical, it is possible for the back angle adjustment knob to come into contact with the lower back tube, causing damage to the unit.



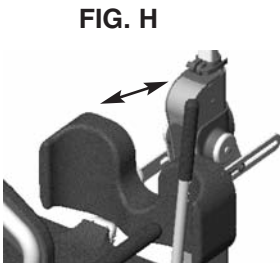
Tray/Front Pad

- **FIG. G-** To adjust the height of the tray/front pad, loosen the clamp located just above the front column. Lift the tray to the user's desired height level and tighten the clamp.
- To adjust the depth of the tray/front pad, loosen the clamp located just below the tray. Move the front pad to the user's desired position and tighten the clamp.



Kneepad

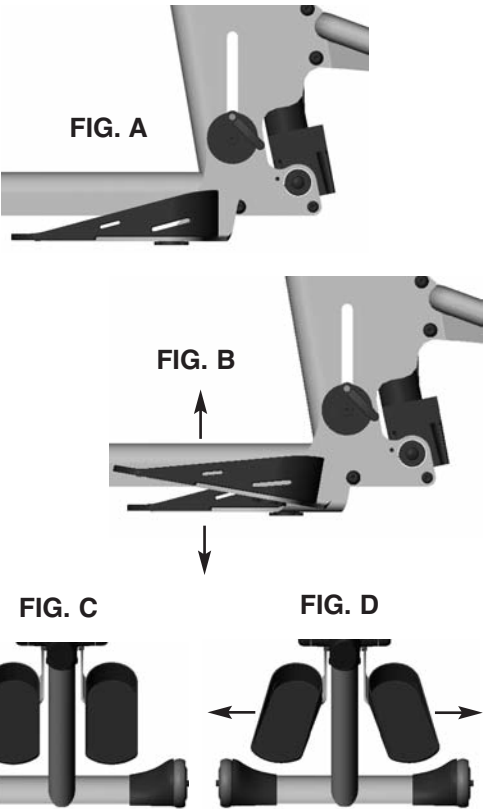
- **FIG. H-** To adjust the kneepad, loosen the ratchet handle and move into position. Tighten ratchet handle once desired position is complete.
- Position the kneepad so that the user's knee is cushioned in the front and only 2 fingers space between the back of the leg and the seat.



Adjusting Your EasyStand® Evolv™

Footplates

- **FIG. A-** Loosen the clamp connecting the foot bracket to the seat post.
 - Position the height of the foot bracket so the user's knee is as close to the seat pivot as possible.
 - ⚠ **Caution:** Avoid placing fingers in the adjustment slot.
 - **FIG. B-** The footplates can also be adjusted plantar/dorsi.*
 - Tighten the clamp securely.
 - **FIG. C and D-** The toes of the user can be abducted (toe out) by lifting the front edge of the foot plate and twisting the foot plate.*
- *Available on the Evolv E3 if ordered with multi-adjustable footplates.*



Hip Supports and Lateral Supports

- **FIG. E-** The hip supports can be adjusted by loosening the knob underneath the unit to move the hip support in and out or loosen the knob on the side of the unit to move the hip support up or down. These can be removed for transferring.
- The lateral supports can be adjusted by loosening the knob on the back of the unit to move the laterals in or out and by loosening the knob on the side to adjust the depth. Lateral brackets may also be swapped left for right to gain additional range of adjustment.
- In addition, the hip and lateral pads have a number of attachment holes on the back of the pad which will allow for additional positions vertically and horizontally. The pad may also be bolted on at a straight, 90, 180, or 270 degree rotational position. Please check for fit and interference by bringing to a fully standing position and back to sitting again without a user seated in the unit, as the pads may not work in all positions in all possible configurations, depending on the size and options installed on your unit.

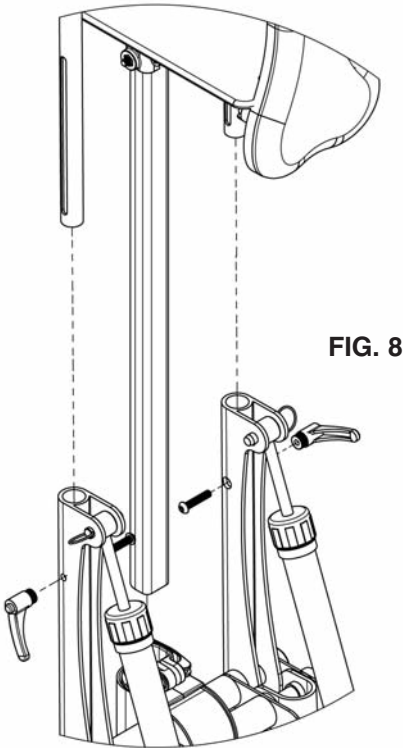
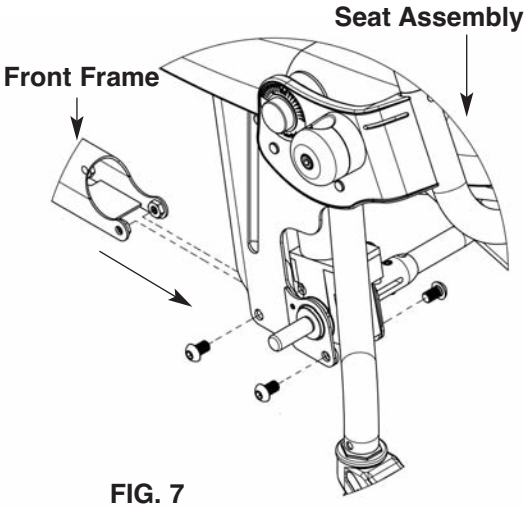
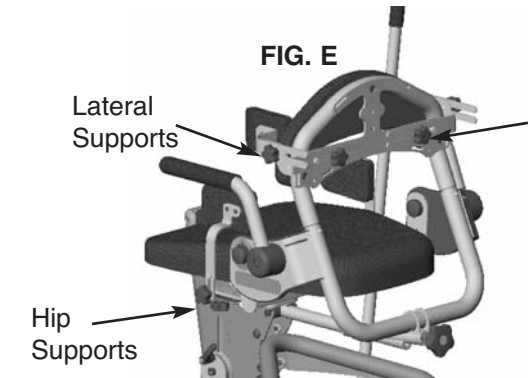
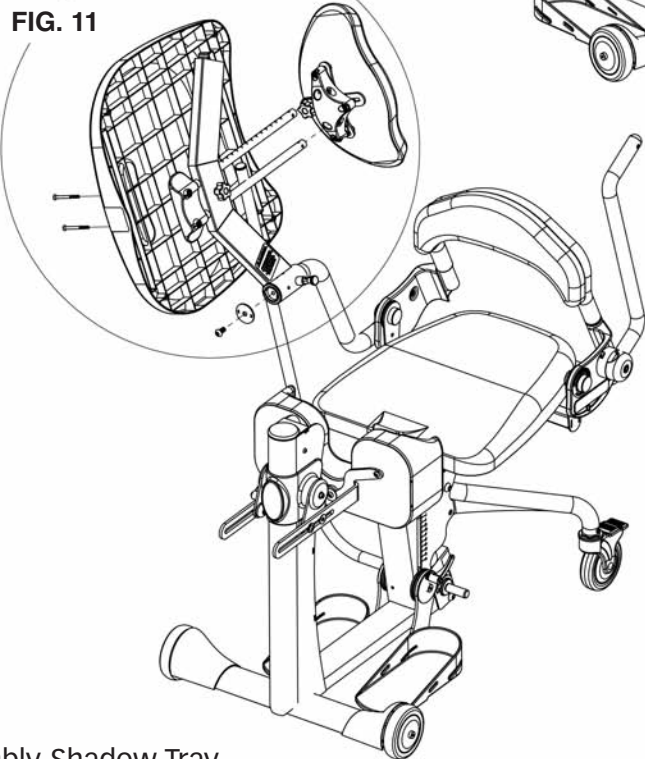
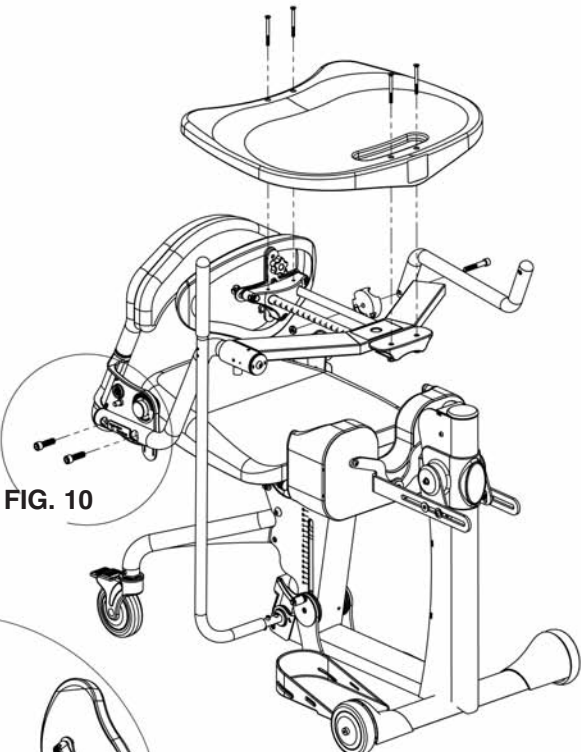
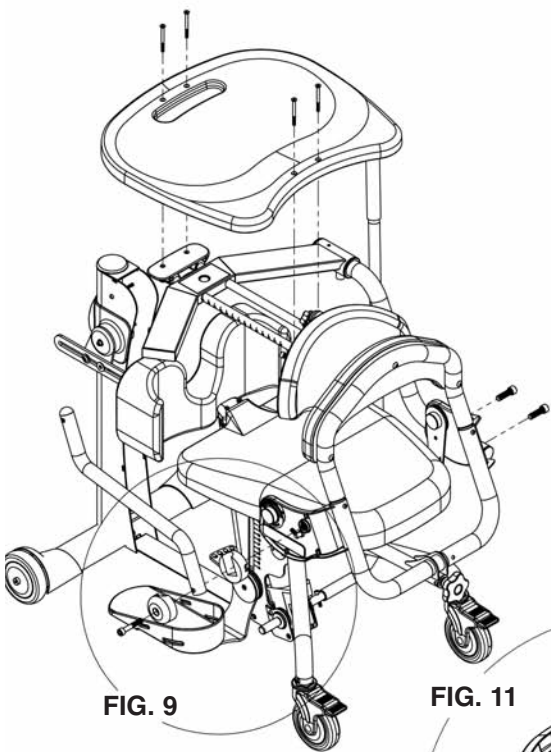


FIG. 7- Slide the front frame into the opening of the seat assembly as shown. To help with installation, place folded cardboard or a block of wood underneath the frame to support it. Start all four bolts first, then tighten securely.

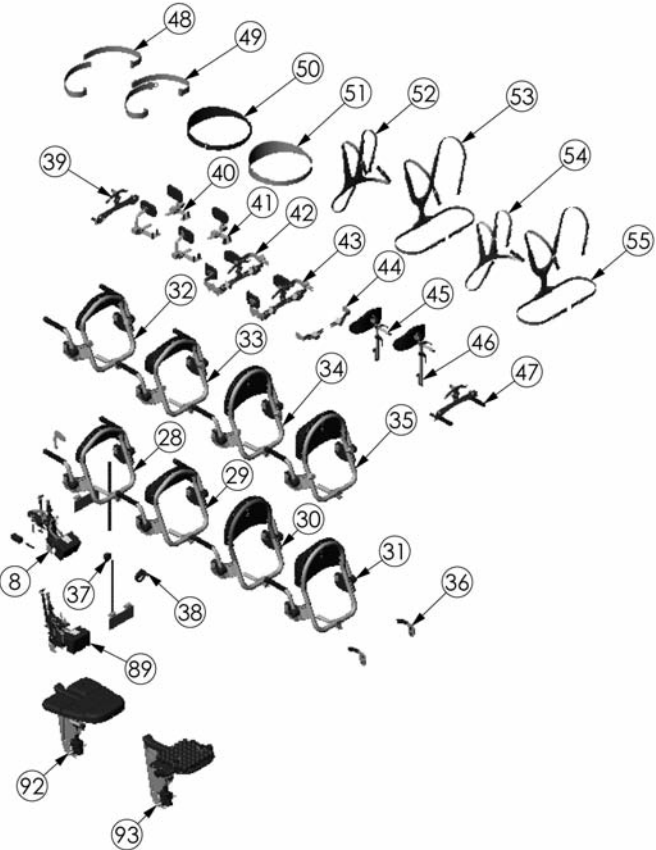
FIG. 8- Slide the handles into the slots. Tighten securely. If you ordered any additional options, please refer to the drawings on p.15-27. Install the seat onto the seat assembly after all the other options are added.

For Glider adjustments, see p. 34.

Configuration Assembly-Shadow™ Tray



ITEM NO.	PART NO.	QTY.	NAME	ITEM NO.	PART NO.	QTY.	NAME	ITEM NO.	PART NO.	QTY.	NAME
1	NG50008	1	FRONT FRAME STANDARD LG	26	5030	1	ARM TROUGHS	51	51600	1	L CHEST RESTRAINT
2	NG50084	1	EVOLV LARGE (V400)	27	NG50042	1	SUPPORT GRIP OPTION	52	NG30056	1	LARGE CHEST VEST EVOLV
3	NG50055	1	FRONT CASTER FRAME STANDARD	28	NG50066	1	BACK LOW FLAT	53	NG30021	1	VEST CHEST Y SHAPE ASSEMBLY LARGE
4	NG50015	1	FOOT ASMBLY LG	29	NG50062	1	BACK LOW W/CONTOUR (V908)	54	NG30170	1	X-STYLE CHEST VEST MEDIUM
5	ng30030	1	STRAPS FOOT OPTION	30	NG50067	1	BACK HIGH FLAT(V909)	55	NG30171	1	Y-STYLE CHEST VEST MEDIUM
6	NG30031	1	STRAPS SECURE FOOT OPTION	31	NG50068	1	BACK HIGH W/CONTOUR (V910)	56	NG50025	1	MOBILE OPTION EVOLV
7	NG50009	1	PUMP HYDRAULIC ASSEMBLY	32	NG50171	1	BACK REMOVABLE LOW FLAT	57	NG50187	1	NEW GENERATION YOUTH GLIDER
8	NG50010	1	ELECTRIC ACTUATOR ASM	33	NG50172	1	BACK REMOVABLE LOW CONTOURED	58	NG50251	1	HANDLE ADJ U-SHAPE YOUTH
9	NG50390	1	PAD KNEE STANDARD	34	NG50173	1	BACK REMOVABLE HIGH FLAT	59	NG50162	1	SEAT LIFT ASSEMBLY YOUTH
10	NG50080	1	INDEPENDENT KNEES EVOLV	35	NG50174	1	BACK REMOVABLE HIGH CONTOURED	60	NG30012	1	PAD SEAT CONTOURED YOUTH
11	NG50083	1	INDEPENDENT KNEES EVOLV ROHO	36	NG50097	1	HANDLES NO BACK	61	NG30183	1	PAD SEAT ROHO YOUTH
12	NG50059	1	HANDLE PUMP STANDARD RT	37	600077	1	KNOB M12 FEMALE	62	NG30172	1	PAD SEAT GLIDER MEDIUM
13	NG50126	1	HANDLE PUMP STANDARD LH	38	600002	1	WHEEL 100mm W/FOLD AWAY HANDLE	63	NG30182	1	PAD SEAT ROHO YOUTH GLIDER
14	NG50044	1	QUAD GRIP OPTION	39	NG50034	1	BRACKET ACCESSORY LG	64	NG50295	1	ASMBLY NO-TABLE OPTION
15	NG50070	1	ACTUATOR HANDLE EXTENSION EVOLV LG	40	NG50161	1	HIP GUIDE ASSEMBLY MEDIUM	65	NG50327	1	ANGLE ADJUSTABLE TRAY MOBILE
16	NG50024	1	NEW GENERATION GLIDER ASSEMBLY	41	NG50198	1	HIP GUIDE ASSEMBLY LARGE	66	NG50331	1	ASSEMBLY ADJUSTABLE PAD BRACKET STS
17	NG30006	1	PAD SEAT COUNTOUNED LARGE	42	NG50224	1	LATERAL SUPPORT ASSEMBLY MEDIUM	67	NG50205	1	FRONT FRAME XL EVOLV
18	NG30023	1	PAD SEAT LG ROHO OPTION	43	NG50176	1	LATERAL SUPPORT ASSEMBLY	68	NG50207	1	FRONT CASTER FRAME STANDARD XL
19	NG30185	1	PAD SEAT GLIDER LARGE	44	NG50041	1	BRACKET ASMBLY LATS UNIVERSAL	69	NG50346	1	ASMBLY CASTER FRONT EVOLV XT
20	NG30190	1	PAD SEAT GLIDER ROHO OPTION LG	45	NG50240	1	HEAD REST ASSEMBLY MED	70	NG50314	1	ASMBLY CASTER FRONT EVOLV
21	NG30000	1	PAD FRONT EXTRA SUPPORT	46	NG50037	1	HEAD REST ASSEMBLY LG (V915)	71	NG50322	1	MOBILE OPTION EVOLV XT
22	NG30001	1	PAD CHEST STANDARD	47	NG50040	1	HANDLE PUSH ASSEMBLY	72	NG50026	1	TABLE STS OPTION
23	NG50309	1	TABLE POST ASSEMBLY	48	NG30029A	1	STRAP SEAT BELT BLACK NG	73	NG50125	1	TABLE STS OPTION LH
24	NG50043	1	ANGLE ADJUSTABLE TRAY	49	NG30028A	1	STRAP SEAT BELT BLACK W/BUCKLE NG	74	NG50130	1	TABLE STS MEDIUM OPTION
25	NG50045	1	HAND CYCLE ATTACHMENT	50	51601	1	S. CHEST RESTRAINT	75	NG50231	1	TABLE STS SHORT XT LH



76	NG50332	1	TABLE STS OPTION RH XT
77	NG50333	1	TABLE STS OPTION LH XT
78	NG50334	1	TABLE STS SHORT XT RH
79	NG50335	1	TABLE STS SHORT XT LH
80	NG50194	1	OVERSIZED TABLE ASSEMBLY
81	NG20017	1	TABLE BASIC
82	NG20103	1	TABLE MOLDED EVOLV
83	NG20092	1	TABLE MOBILE
84	NG20019	1	TABLE GLIDER
85	NG50318	1	SEAT SWIVEL LARGE
86	NG50324	1	SEAT SWIVEL YOUTH
87	NG50209	1	SEAT & LIFT ASM XT
88	NG50278	1	FOOT ASMBLY XL
89	NG50321	1	ELECTRIC ACTUATOR ASM XT
90	NG50350	1	GLIDER SEAT ASMBLY YOUTH
91	NG50351	1	GLIDER SEAT ASMBLY YOUTH ROHO
92	NG50352	1	GLIDER SEAT ASMBLY ADULT
93	NG50353	1	GLIDER SEAT ASMBLY ADULT ROHO
94	NG50328	1	HANDLE PUMP REMOVEABLE/ADJ RH

This list is for reference only, please contact AMI Customer Service with your product serial number to ensure proper replacement parts are ordered.

EasyStand® Evolv™ Options-Parts Detail

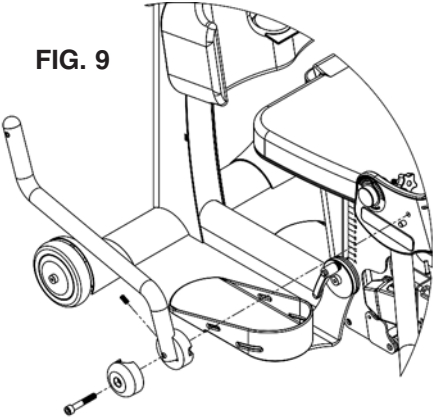
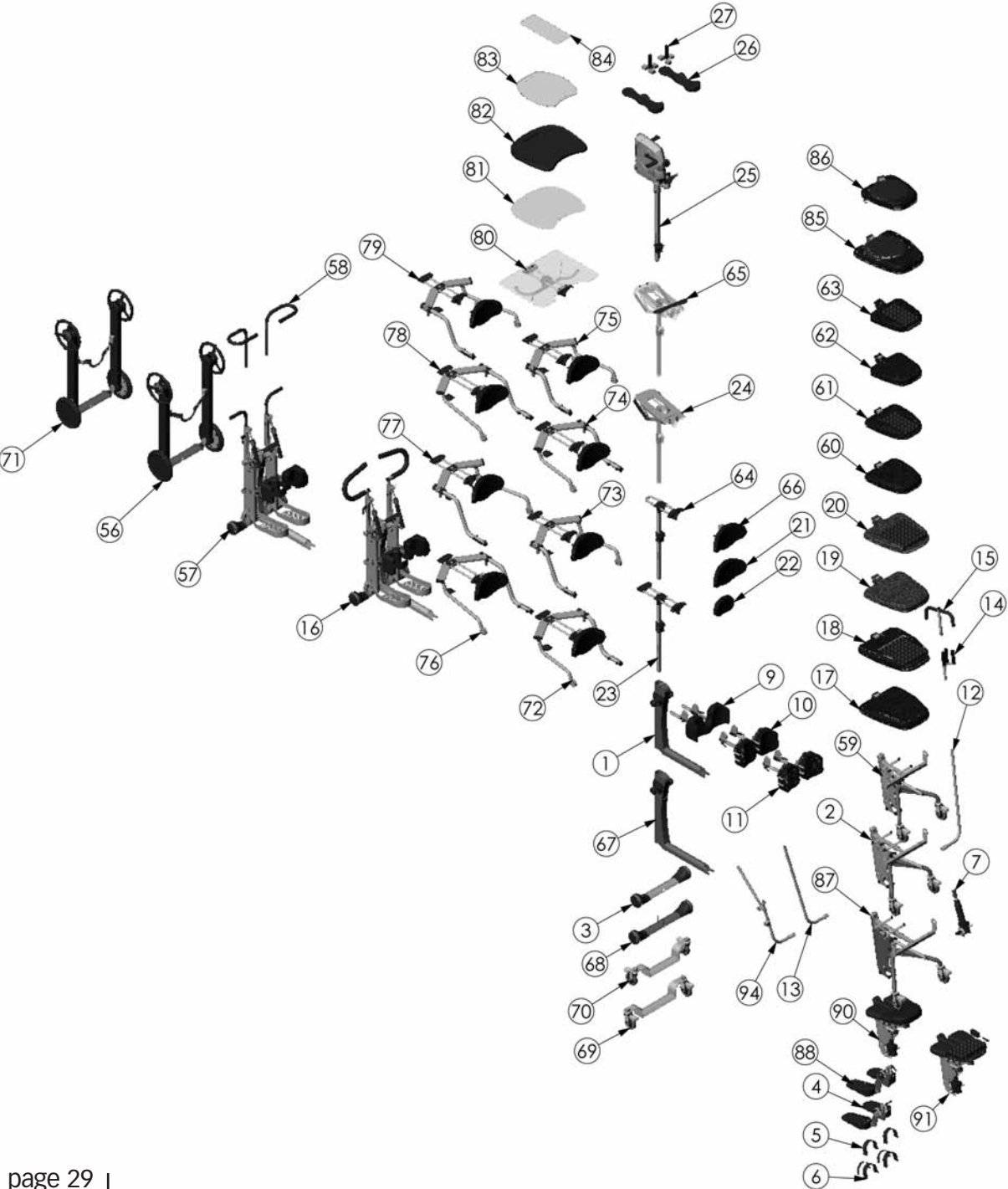


FIG. 9- To install the support arm, remove the nut from the lower part of the support arm. Place support arm onto the unit. Place nut onto the bolt on the inside of the seat bracket. Tighten bolts and nuts securely.

FIG. 9

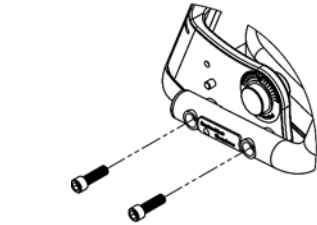


FIG. 10- Install the table arm rest to the unit with the two bolts attached. Tighten bolts securely.

FIG. 10

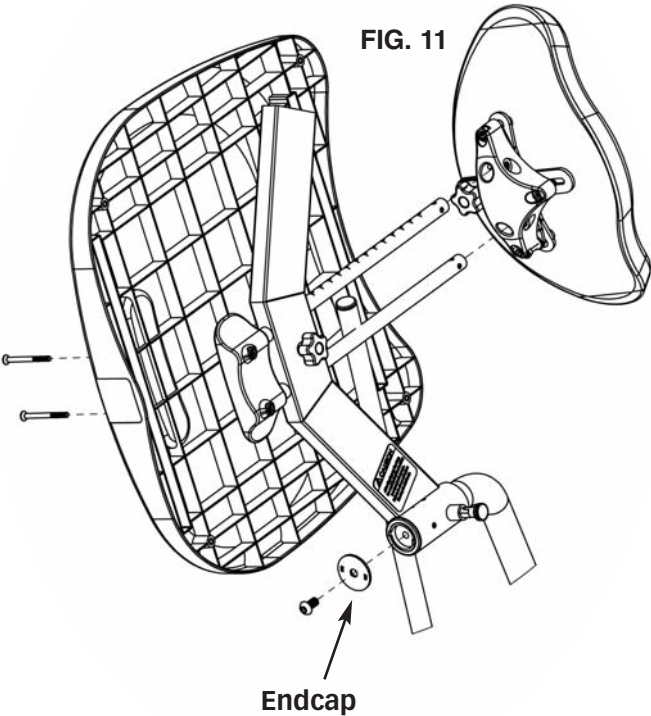


FIG. 11

Endcap

Configuration Assembly-Mobile

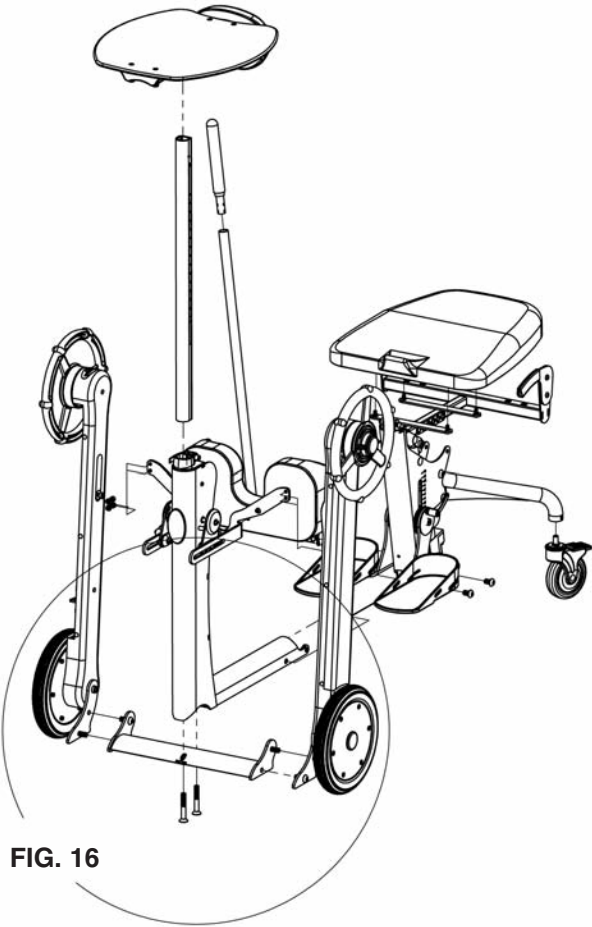


FIG. 16

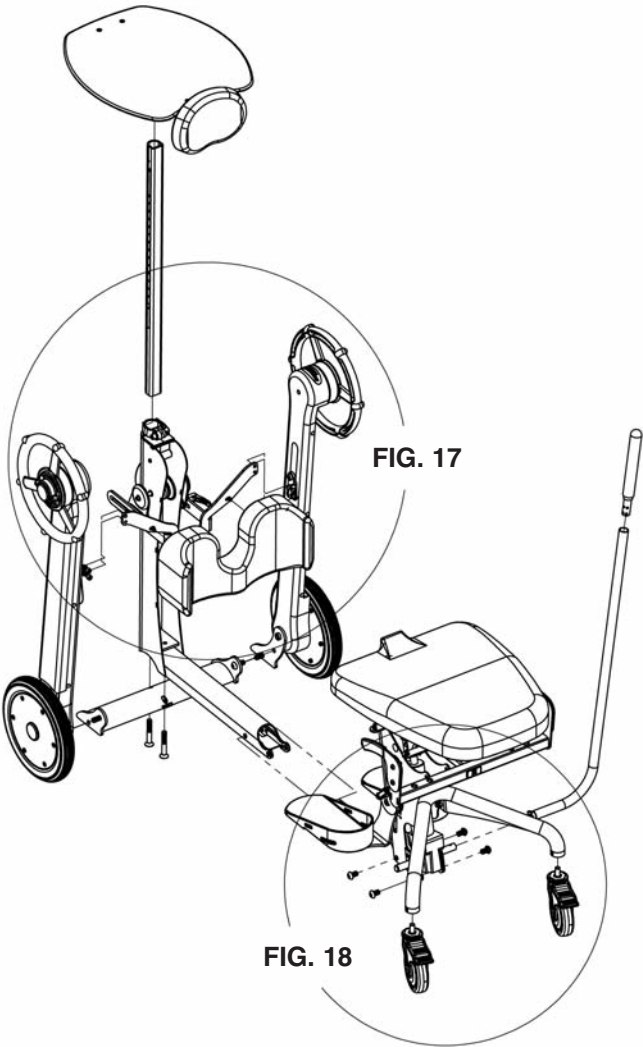
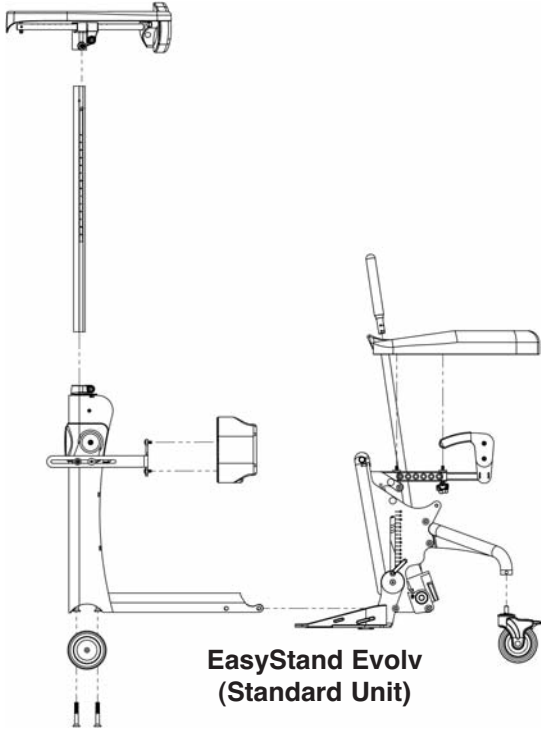


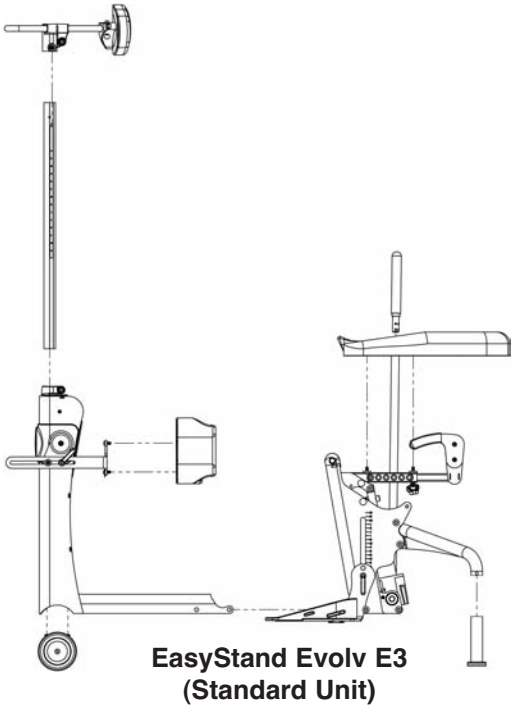
FIG. 17

FIG. 18

Basic Unit Reference Drawing- EasyStand® Evolv™ and Evolv™ E3

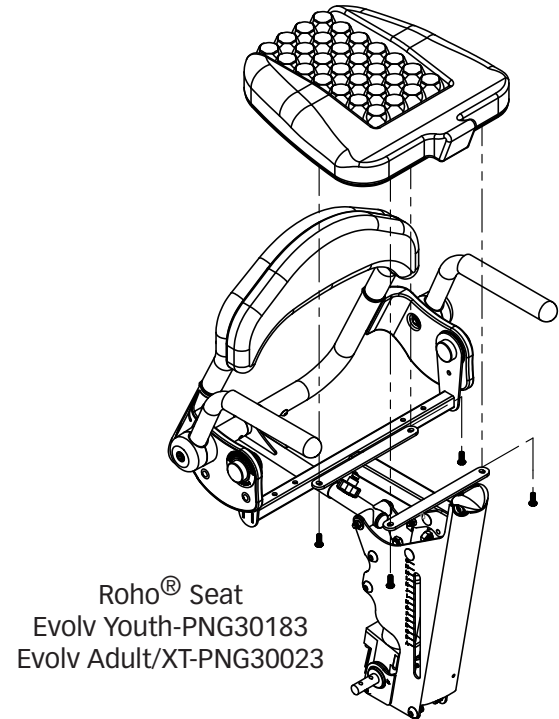


EasyStand Evolv
(Standard Unit)



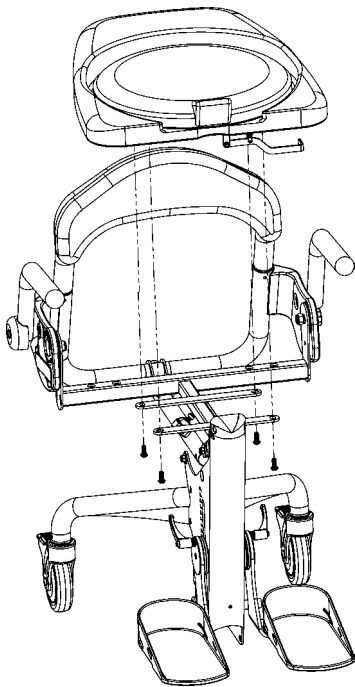
EasyStand Evolv E3
(Standard Unit)

Option Assembly-Roho® Seat and Hip Supports

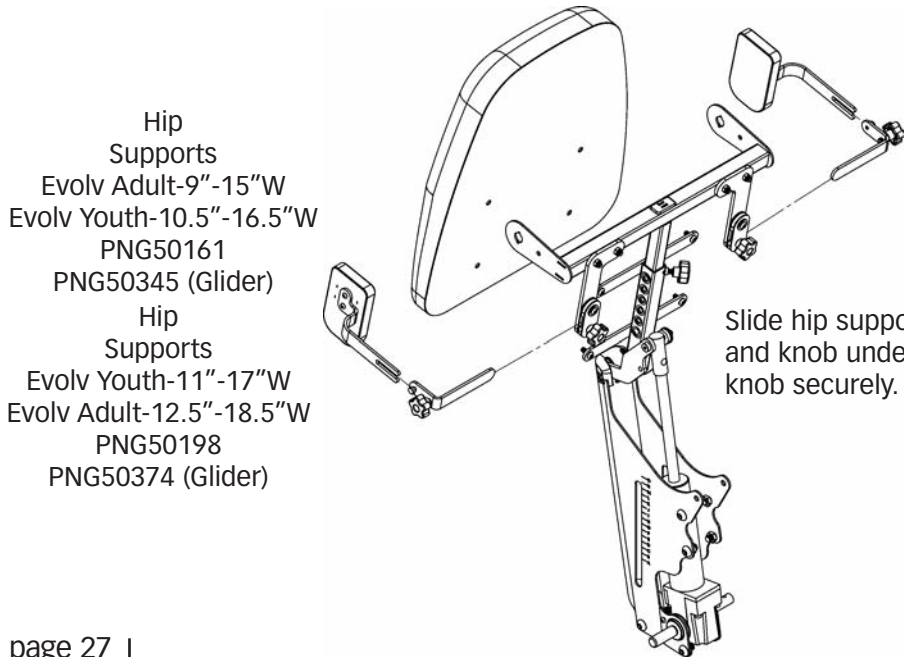


Install the seat onto the seat assembly after all the other options are added. Tighten the bolts securely.

Roho® Seat
Evolv Youth-PNG30183
Evolv Adult/XT-PNG30023



Rotating Seat
Evolv Youth-PNG50324
Evolv Adult/XT-PNG50318



Slide hip supports onto notch and knob under seat. Tighten knob securely.

Hip Supports
Evolv Adult-9"-15"W
Evolv Youth-10.5"-16.5"W
PNG50161
PNG50345 (Glider)
Hip Supports
Evolv Youth-11"-17"W
Evolv Adult-12.5"-18.5"W
PNG50198
PNG50374 (Glider)

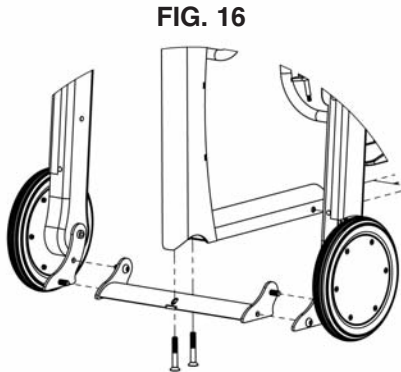


FIG. 16

FIG. 16- To help with assembly, place a block of wood under the unit to raise the caster frame. Line up the two bolts to the holes of the caster frame, start both bolts before tightening securely. Take the left side mobile assembly and place onto the caster frame.

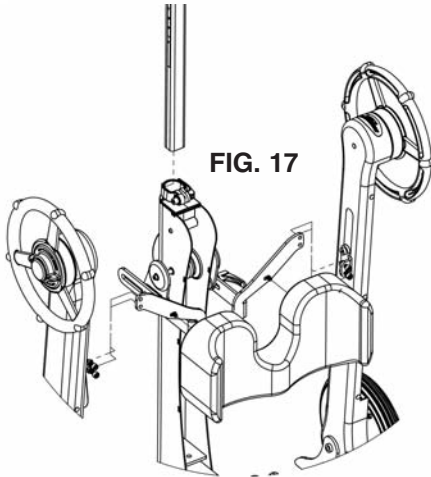


FIG. 17

Line up holes and insert top bolt through the inside as shown. Place the nut onto the bolt and hand tighten. Line up holes and insert bottom bolt through the outside as shown. Hand tighten the nut onto the bolt then tighten both bolts securely with a 19mm wrench and hex wrench. Repeat on the opposite side before going onto the next step.

FIG. 17- Insert kneepad bracket into column by depressing the spring button. Place mobile bracket onto the kneepad bracket. Place kneepad onto the mobile bracket.

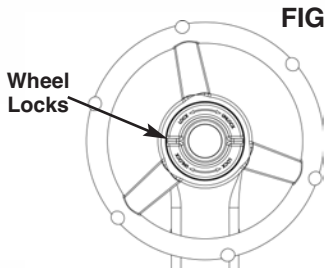


FIG. 18

Insert three bolts into the bottom of the kneepad. Tighten bolts securely. Remove bolts from mobile bracket. Flip down kneepad and align bracket on mobile wheels. Tighten bolts and nuts securely with 13mm wrench and hex wrench. Repeat steps on the opposite side before going onto the next step.

FIG. 18- Your Mobile is equipped with wheel locks for safety in transferring and stability while performing stationary activities. Note the directional arrows imprinted in the center hub of each handrim.

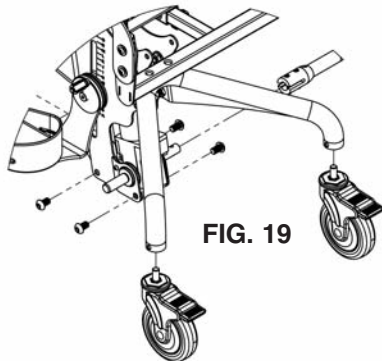
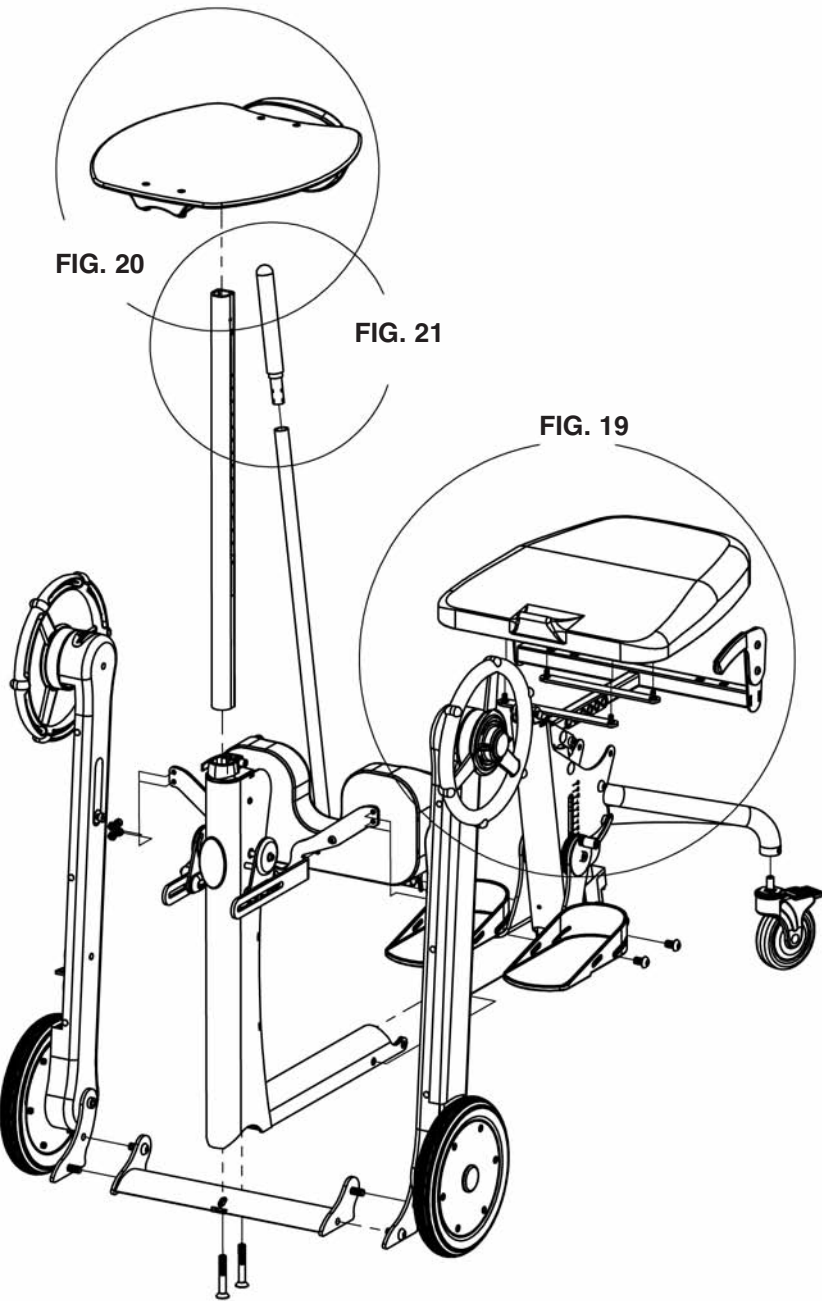


FIG. 19

FIG. 19- Attach the casters to the rear seat assembly and tighten using the wrench provided, do not overtighten.

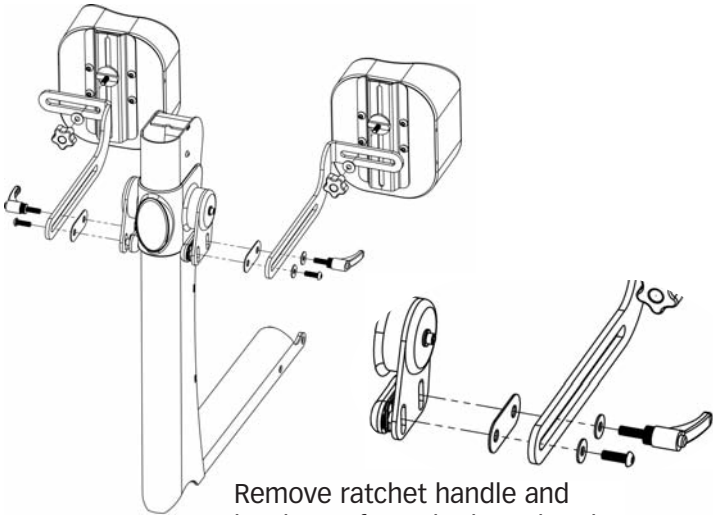
Slide the front column into the opening of the seat assembly as shown. Start all four bolts first, then tighten securely.

Lift seat up and flip down footplates. Then insert ratchet handles into footplates. Tighten securely.



Independent
Kneepads PNG50384

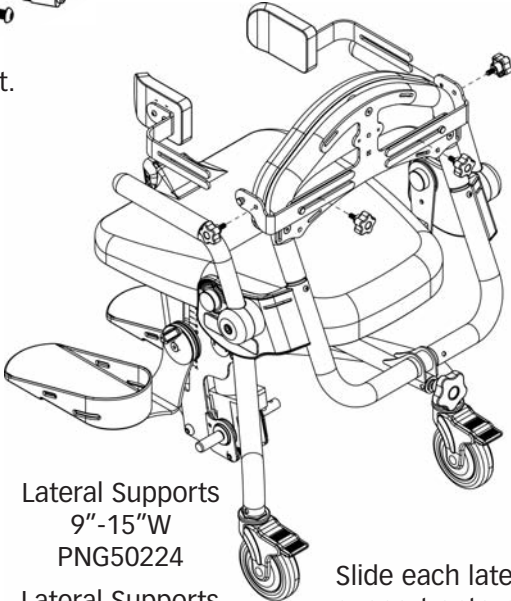
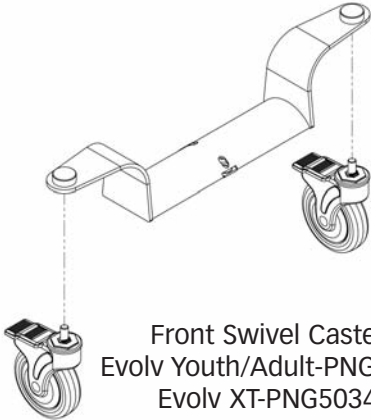
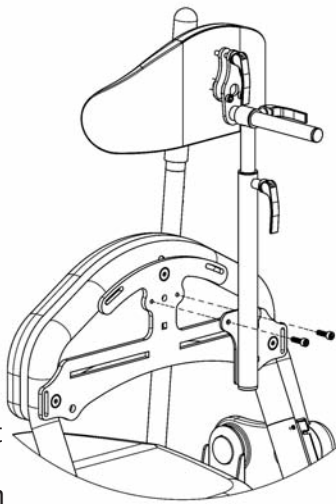
Independent Roho®
Kneepads PNG50385



Head
Support
21"-30"H
PNG50240

Head
Support
24"-33"H
PNG50037

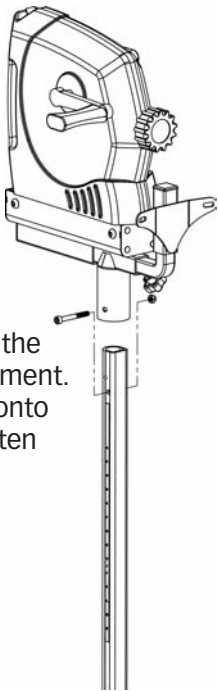
Secure head support onto accessories mounting bracket using two bolts provided. Tighten securely.



Slide each lateral support onto notch and knob on the accessories mounting bracket. Tighten securely.

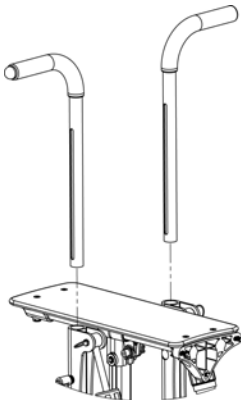
Option Assembly-Hand Cycle Attachment and Glide Handles

Hand Cycle Attachment
PNG50045

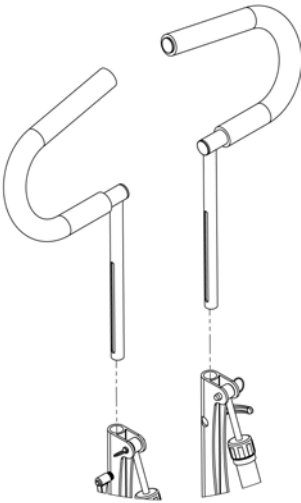


Remove bolt from the Hand Cycle Attachment. Place Hand Cycle onto table column. Tighten securely.

Glide Handles
PNG10177
(Evolv Youth only)



Glide Handles
Left Side-PNG10194
Right Side-PNG10196
(Evolv Adult only)



Glide Handle Extensions
PNG50251
(Evolv Youth only)

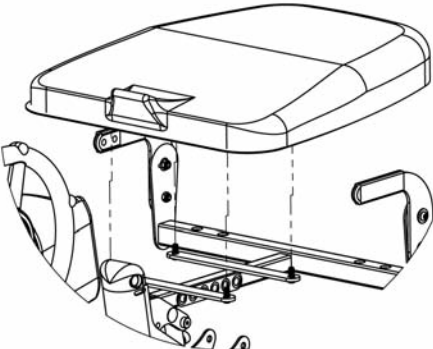
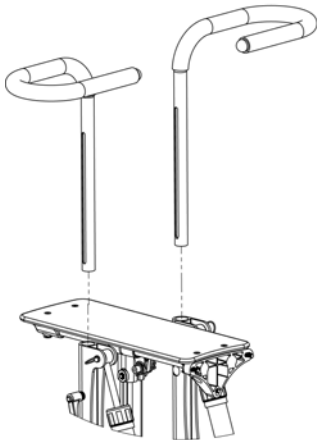


FIG. 19

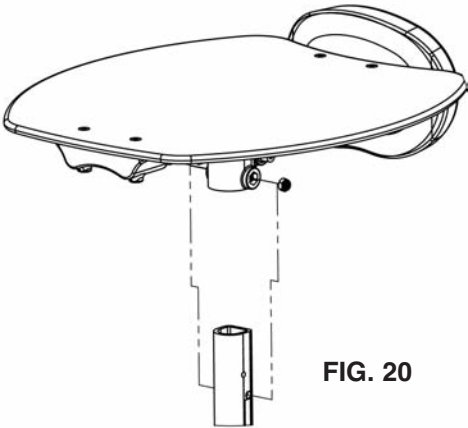


FIG. 20

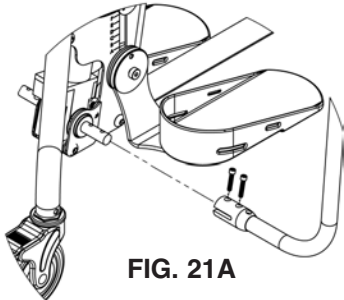


FIG. 21A



FIG. 21B

FIG. 19- If you ordered any additional options, please refer to the drawings on p.15-27. Install the seat onto the seat assembly after all the other options are added. For easier installation, pump the seat halfway up. Start all four bolts first then tighten securely.

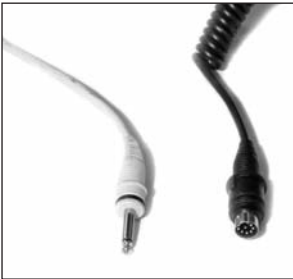
FIG. 20- Insert the tray post into the front column. Holes in the post must face upward. Place tray onto the tray post, insert nut into slot and tighten securely.

FIG. 21A- Remove the bolts from the pump handle, install it onto the pump on the main frame and tighten securely.

FIG. 21B- Insert top of handle into pump handle and tighten securely.

Option Assembly-Pow'r Up Lift

The unit will arrive to you unplugged from the battery, you need to plug in the white cord that supplies power to the actuator and the black cord that supplies power to the remote. The black cord has a notch on it to orient the connector properly. Fully charge battery before use.



Raising/Lowering the Pow'r Up Lift Option

⚠ WARNING! THE EVOLV POW'R UP OPTION IS NOT DESIGNED FOR CONTINUOUS USE. Duty Cycle 10% Max, 1 min. / 19 min.

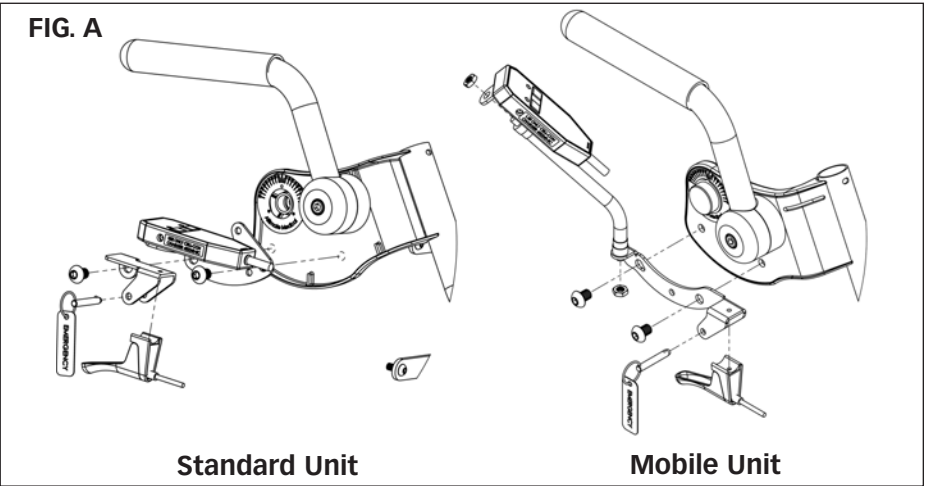
FIG. A- Assemble the hand control onto the unit in reference to the drawing.

FIG. B- Raising the Lift

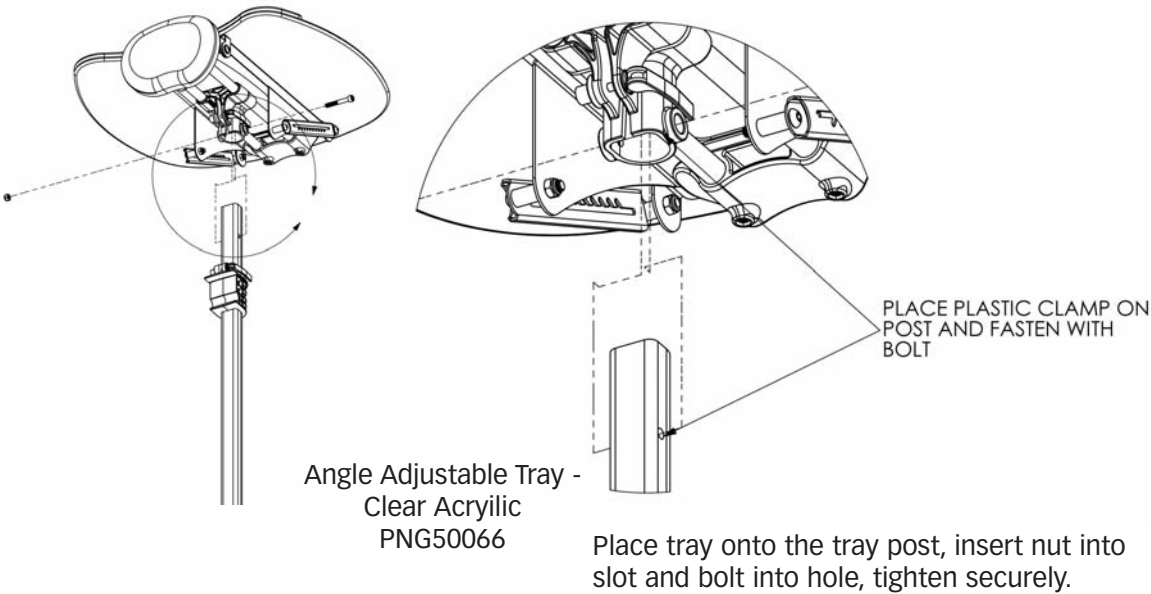
Press the UP (arrow up) button on the hand control to lift the seat.

Lowering the Lift

Press the DOWN (arrow down) button on the hand control to lower the seat.

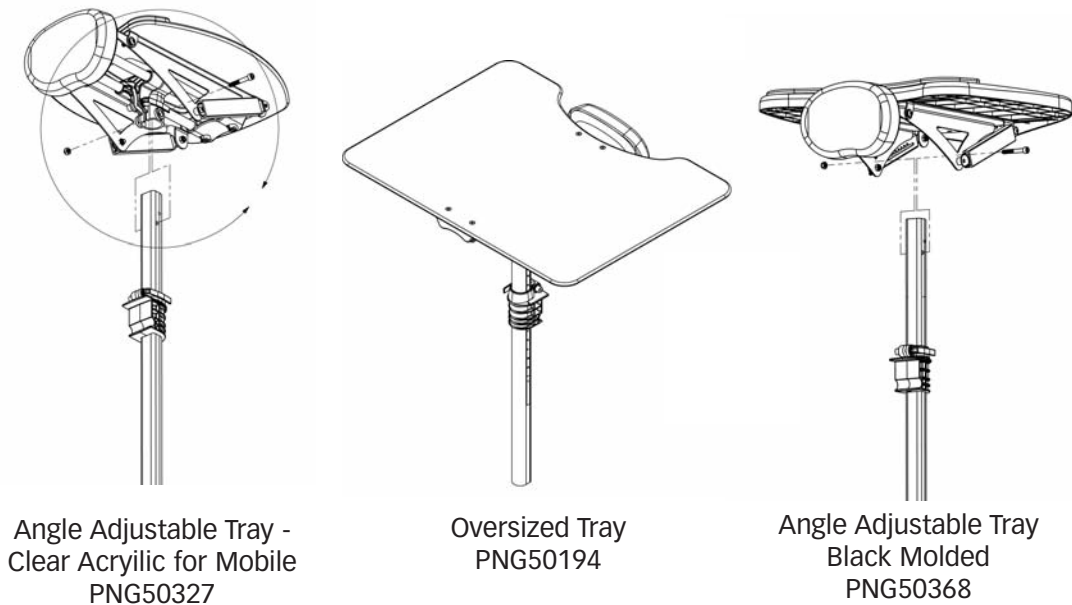


Angle Adjustable Tray, Chest Pad and Independent Kneepads



Angle Adjustable Tray -
Clear Acrylic
PNG50066

Place tray onto the tray post, insert nut into slot and bolt into hole, tighten securely.



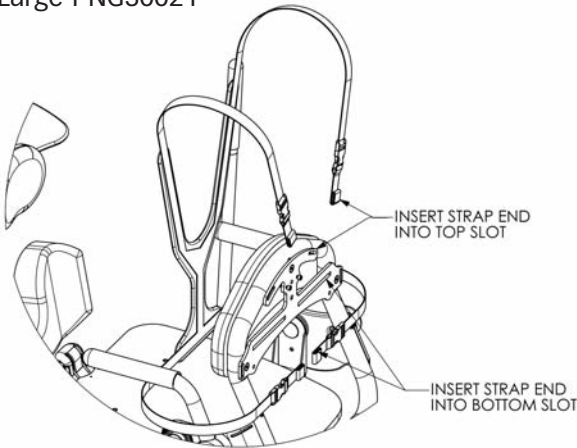
Angle Adjustable Tray -
Clear Acrylic for Mobile
PNG50327

Oversized Tray
PNG50194

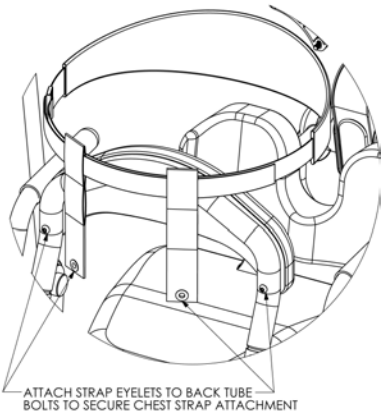
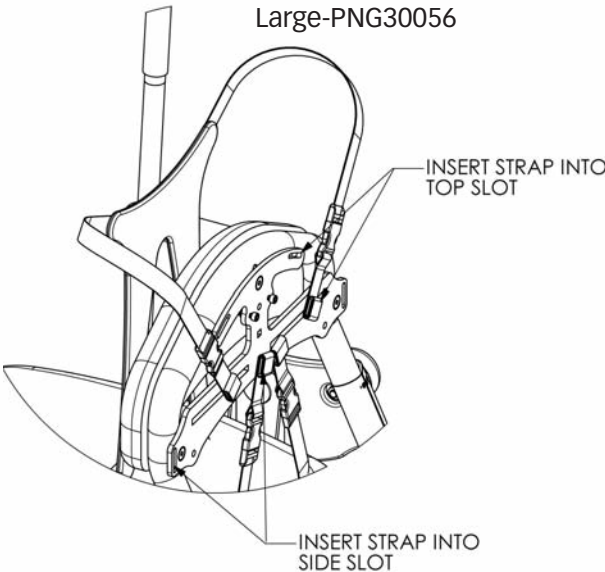
Angle Adjustable Tray
Black Molded
PNG50368

Option Assembly- Chest Vests and Chest Straps

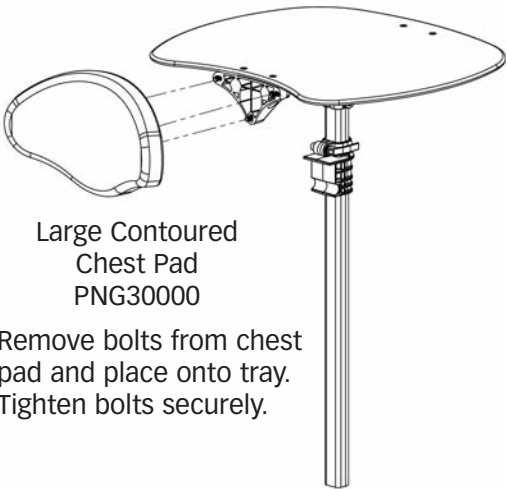
Y-Style
Chest Vest
Medium-PNG30171
Large-PNG30021



X-Style
Chest Vest
Medium-PNG30170
Large-PNG30056



Chest Strap
Small-PNG50192
Large-PNG50193



Large Contoured
Chest Pad
PNG30000

Activating the Mechanical Emergency Release

CAUTION: USING THE EMERGENCY MECHANICAL RELEASE AS THE PRIMARY MEANS TO RETURN TO THE SEATED POSITION CAN CAUSE DAMAGE TO YOUR UNIT. ONLY USE THE MECHANICAL RELEASE IN EMERGENCY SITUATIONS.

All Altimate Medical electric lift products are equipped with a mechanical release to be used in emergency situations.

FIG. C- The release allows the user to be lowered to a seated position in the unlikely occurrence of the battery losing charge while the user is in a standing position. The actuator only retracts if the release is pulled and there is weight on the seat. The release is located on the left side of the seat and is signified by a red tag with the word "EMERGENCY".

1. To activate the emergency mechanical release pull out the quick release pin located on the left side of the seat.
2. Squeeze the handle and if necessary, push down on the seat.

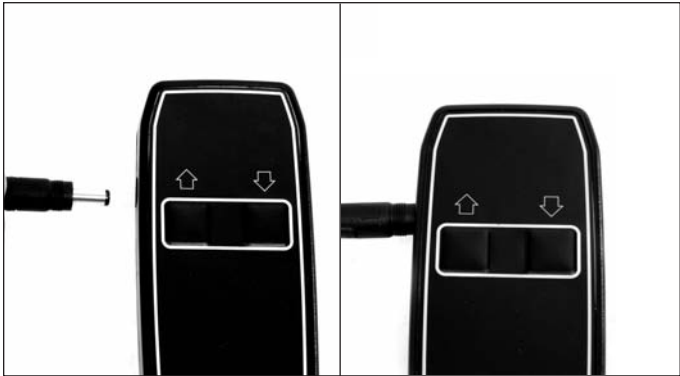
FIG. C



Charging the Battery

FIG. D- The EasyStand Evolv Pow'r Up Lift uses two 12 volt sealed lead batteries rated at 2.9 amps each. An EasyStand Evolv can be lifted approximately 100 times on one full battery charge. An audible alarm will sound when the battery is low. A battery needing to be fully recharged will take approximately 8 hours. The EasyStand Evolv can be raised to the standing position while being charged. The function of the charger is to detect a full battery and then provide a constant potential power supply to hold the battery at a full condition without overcharging it. When the battery EMF rises to a factory-preset point, the charger circuit will not allow the peak output voltage to exceed that value. This factory setting protects a battery from excessive depletion of electrolyte, which can occur from overcharging.

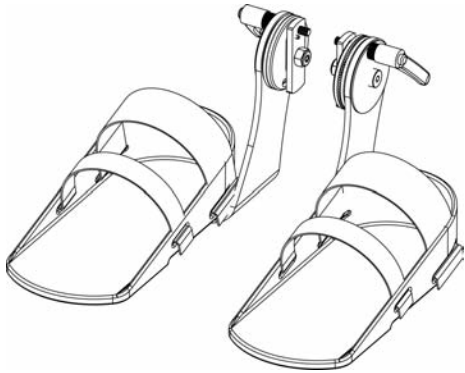
FIG. D



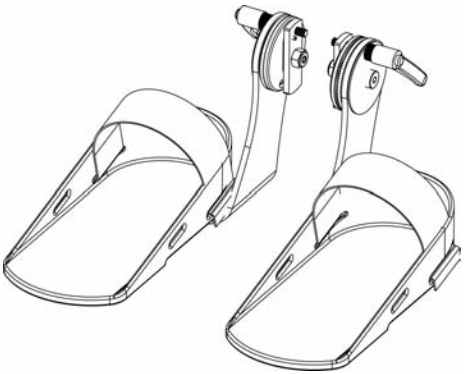
⚠ WARNING: USE ONLY CELL-CON MODEL # 452240-SC FOR CHARGING THE EASYSTAND EVOLV POW'R UP OPTION.

- 1. Plug the receptacle into a wall outlet. The light on the charger will be green indicating an open circuit.
- 2. Plug the charger cord into the side of the hand control. The light on the charger will turn red indicating the batteries are being charged.
- 3. When the batteries are charged, the light on the charger will turn green.

Foot Straps, Airline Buckle Hip Belt, and Velcro Hip Belt

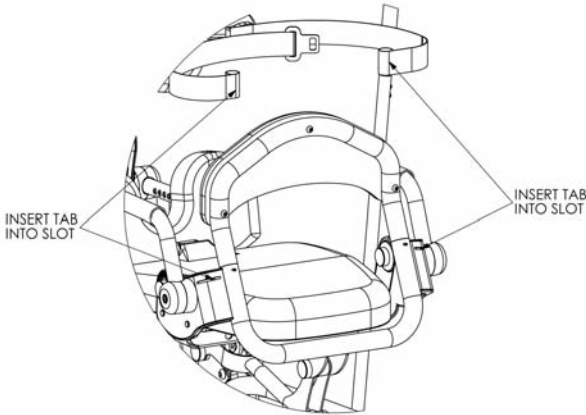


Secure Foot Straps
PNG30031

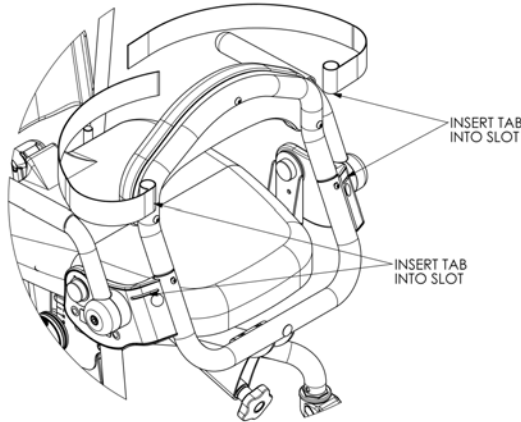


Standard Foot Straps
PNG30030

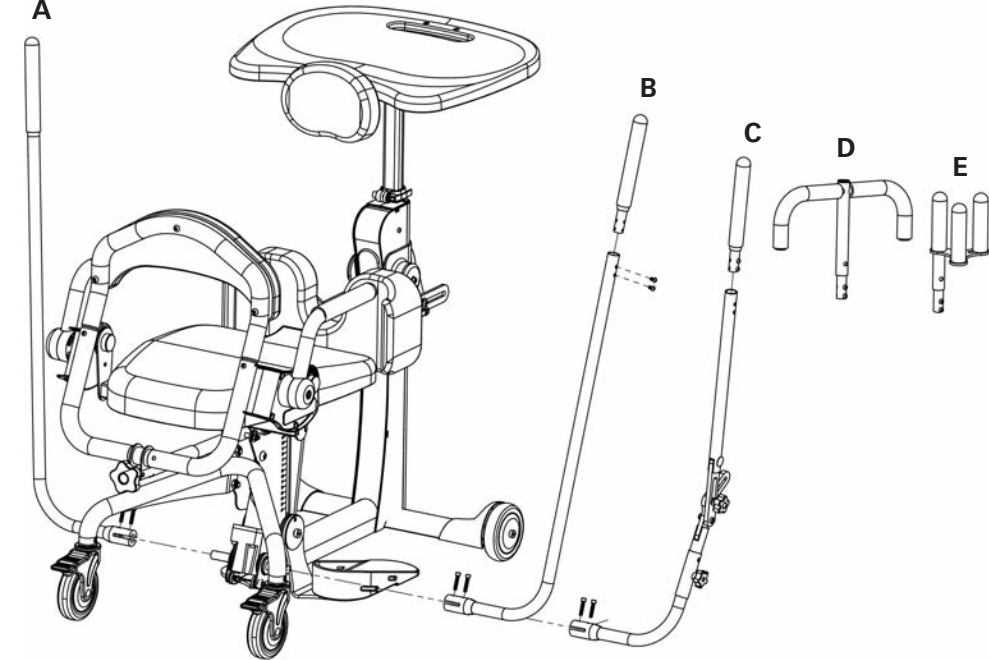
Airline Buckle Hip Belt
PNG30028



Velcro Hip Belt
PNG30029



- A
Standard
Actuator
Left Handle
PNG50126
- B
Standard
Actuator
Right Handle
PNG50059
- C
Adjustable/
Removable Handle
Universal Left/Right
PNG50328
PNG50349 (XT)
- D
T-Style
Handle
Extension
PNG50070
- E
Quad Grip
Handle
Extension
PNG50044



Remove the bolts from the pump handle. Insert the handle onto the pump. Line up holes and insert bolts. Tighten securely.

Battery Replacement

FIG. E- Once the batteries have reached the end of their useful life they are considered hazardous waste. Please contact your local recycling authority for information on disposing of your batteries.

Udskiftning af batteri på CB 08-0A/Replacement of battery in CB 08-0A/ Auswechslung der Batterie in CB 08-0A/Remplacement des batteries du CB 08-0A.

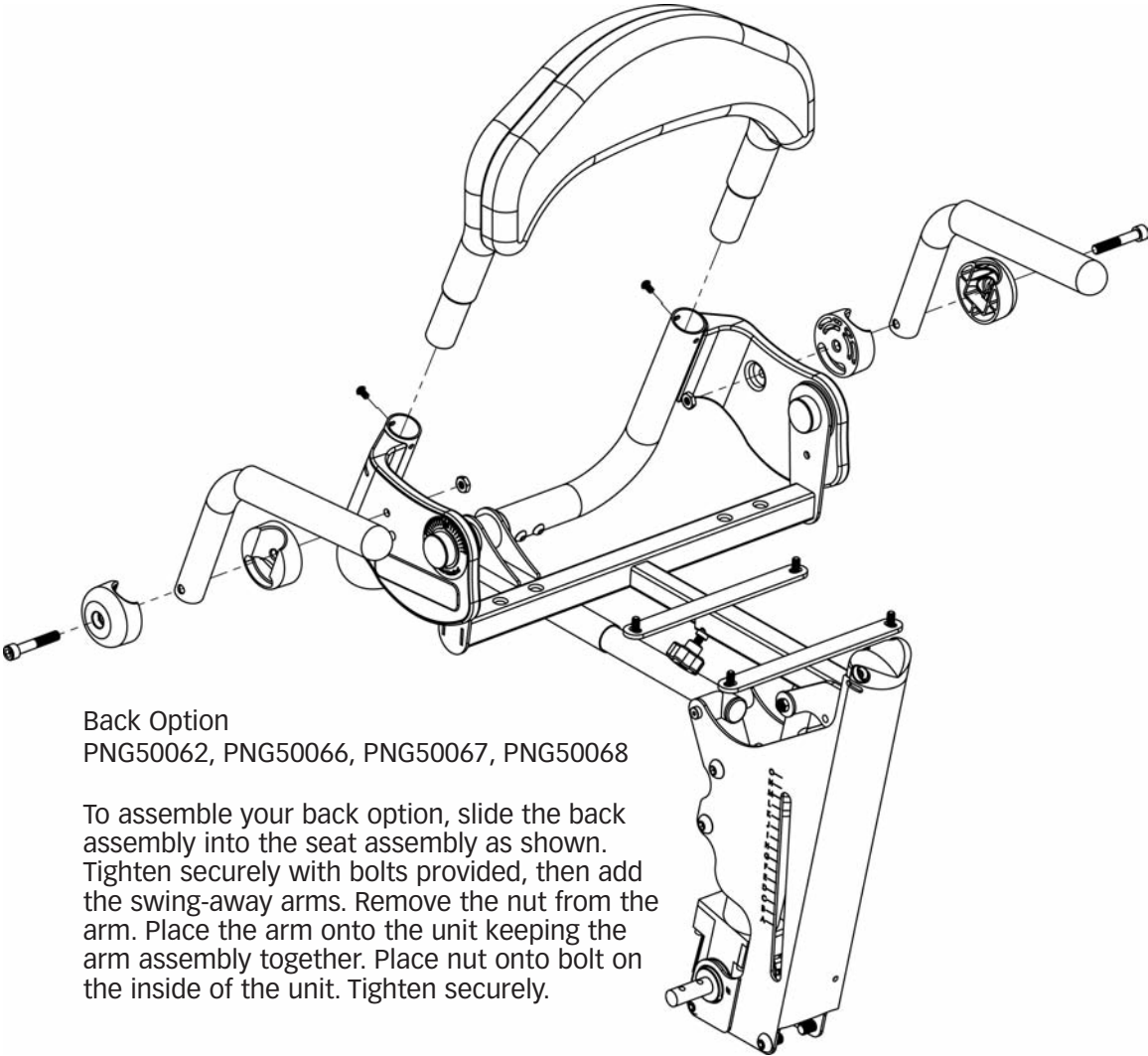
1. Fjern lader/Remove charger/Lader entfernen/Enlever le chargeur.
2. Træk stik ud/Pull plug out/Stecker ausziehen/Tirer sur la fiche repérée.
3. Fjern alle batterier samt disses ledninger/Remove all batteries with wires/Alle Batterien mit Leitungen entfernen/Enlever toutes les batteries avec leur fils de liaison.
4. Skift alle batterier til samme eller tilsvarende type/Replace all batteries by same or identical type/Alle Batterien durch denselben oder ähnl. Typ ersetzen/Remplacer les batteries par des nouvelles identiques.
5. Monter ledninger og stik som vist/Remount wires and plug as shown/Leitungen und Stecker wie gezeigt montieren/Reconnecter les fils de liaison et la fiche comme indiqué sur le schéma.
6. Påse at evt. pakning er korrekt monteret/Check that seal, if any, is correctly mounted/Dafür Sorge tragen, dass eine eventuelle Dichtung korrekt montiert ist/Vérifier que le joint d'étanchéité du carter, s'il existe, est correctement placé.

B = Sort/Black/Schwarz/Noir
R = Red/Red/Rot/Rouge
W = Hvid/White/Weiss/Blanc

FIG. E

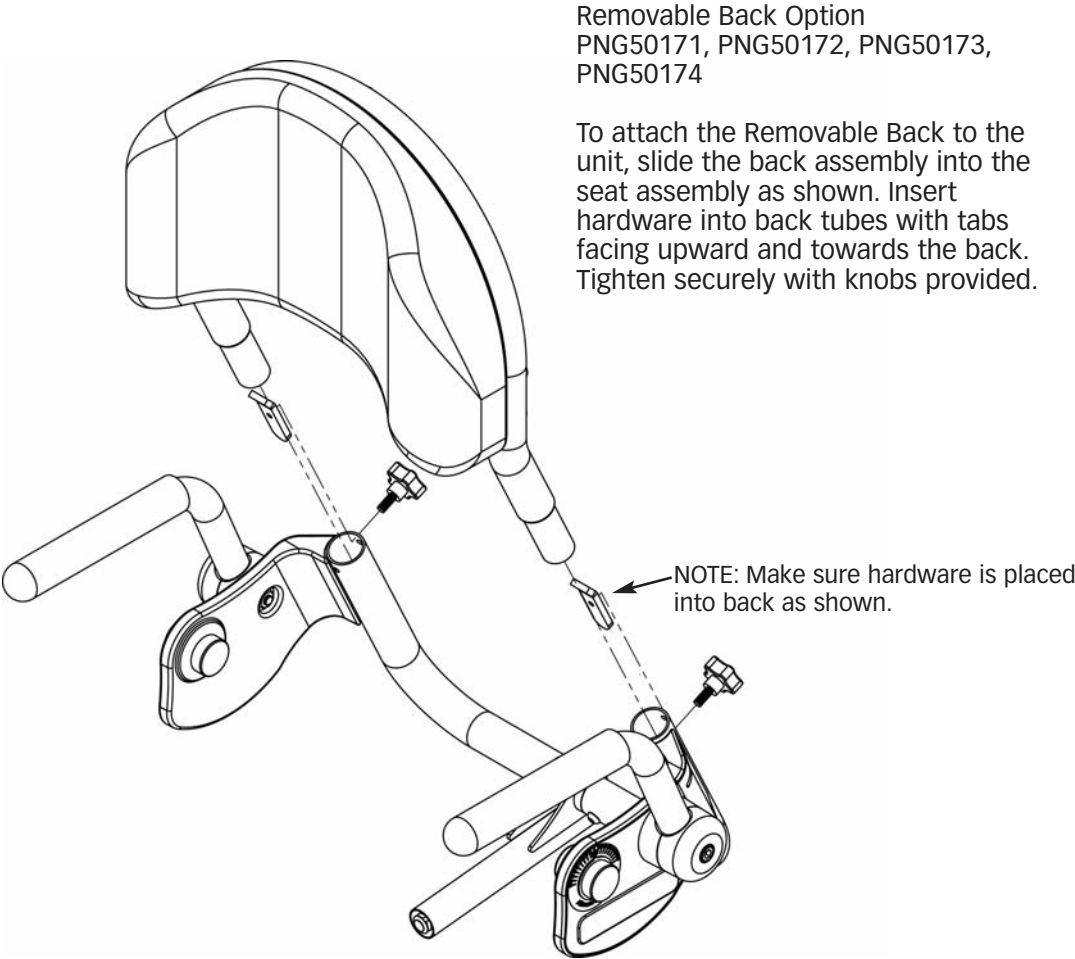
WARNING: ALTIMATE MEDICAL STRONGLY RECOMMENDS THAT BATTERY REPLACEMENT BE PERFORMED BY A QUALIFIED TECHNICIAN. WARRANTY WILL BE VOIDED IF IDENTICAL BATTERY IS NOT REPLACED.

1. If necessary, remove the charger from the hand pendant.
2. Take the cover off the control box to access the batteries and wiring.
3. Remove the plug connecting the batteries to the control box.
4. Remove the batteries.
5. Replace the batteries with the identical type.
6. Remount the wires to the batteries and insert the plug into the control box.



Back Option
PNG50062, PNG50066, PNG50067, PNG50068

To assemble your back option, slide the back assembly into the seat assembly as shown. Tighten securely with bolts provided, then add the swing-away arms. Remove the nut from the arm. Place the arm onto the unit keeping the arm assembly together. Place nut onto bolt on the inside of the unit. Tighten securely.



Removable Back Option
PNG50171, PNG50172, PNG50173,
PNG50174

To attach the Removable Back to the unit, slide the back assembly into the seat assembly as shown. Insert hardware into back tubes with tabs facing upward and towards the back. Tighten securely with knobs provided.

NOTE: Make sure hardware is placed into back as shown.