

Titan

Lift Manual

PART #: F-600TL (with anchor)
PART #: F-600TLNA (without anchor)

US PATENT NUMBER: [D507,769 S]

600 LB. [272 kg] MAX WEIGHT CAPACITY



MANDATORY – LEAVE THIS MANUAL WITH LIFT OWNER



Read & follow all instructions
Lift safety can only be ensured if the lift is installed and operated according to these instructions



NEVER permit children to play on or around the lift
Do not allow children to use the lift without adult supervision



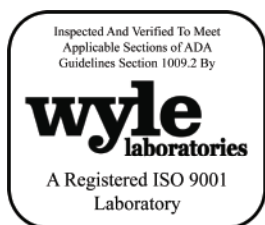
NEVER apply direct water pressure to the electronics



NEVER use the lift with a dry pool



For safety reasons, NEVER swim alone



9889 Garrymore Ln
Missoula, MT 59808
888-687-3552 | +1-406-549-0769
aquacreek.com



SAVE a copy of these instructions

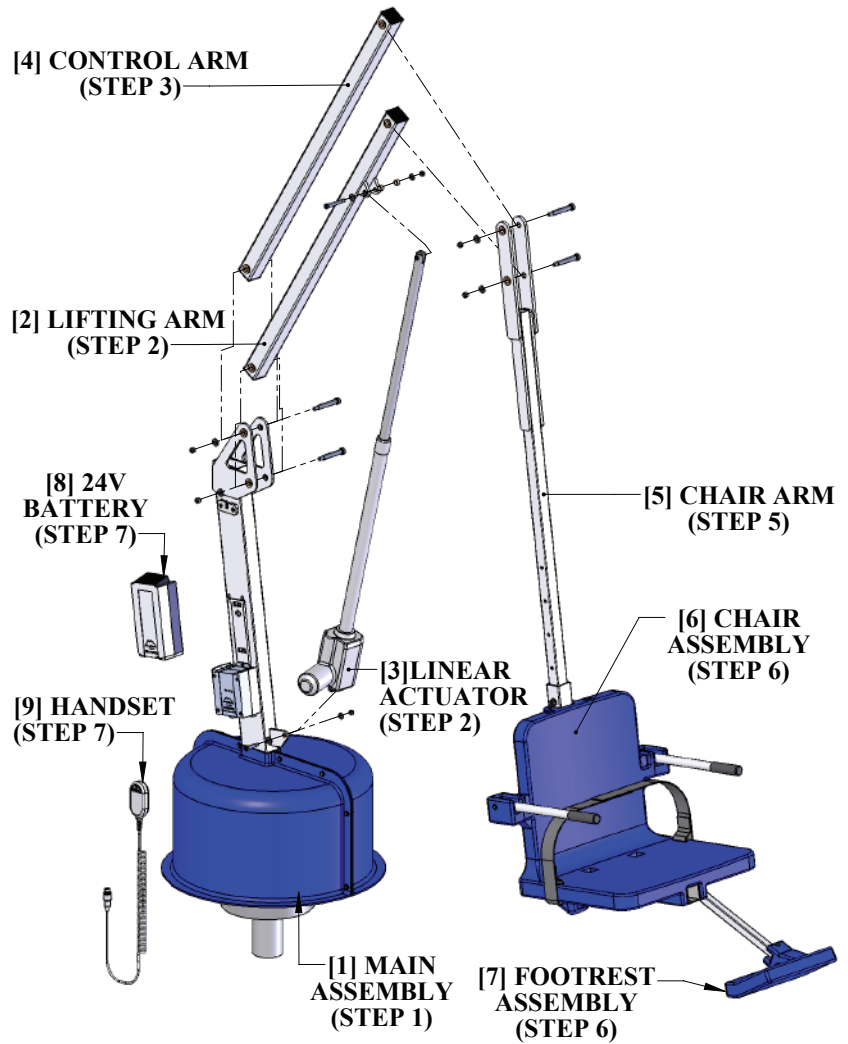
Titan Lift

Table of Contents

PAGE	DESCRIPTION
3	TITAN COMPONENTS
4	ADA INSTALLATION REQUIREMENTS
5-6	ANCHOR INSTALLATION: NEW CONSTRUCTION
7	TITAN LIFT INSTALLATION
8-13	TITAN LIFT ASSEMBLY INSTRUCTIONS
14-15	TITAN LIFT OPERATING INSTRUCTIONS
16-17	TROUBLESHOOTING GUIDE
18	BATTERY MAINTENANCE
19	CARE FOR YOUR LIFT
20	TITAN PARTS LIST
21	SEAT & FOOTREST PARTS LIST
22	WARRANTY

Titan Lift Components

1. THE TITAN MAIN ASSEMBLY
2. LIFTING ARM
3. LINEAR ACTUATOR
4. CONTROL ARM
5. SEAT ARM
6. SEAT ASSEMBLY
7. FOOTREST ASSEMBLY
8. 24 V BATTERY
9. HANDSET CONTROL
10. BATTERY CHARGER
(NOT SHOWN)



READ CAREFULLY

Check entire box and inside all packing materials for parts. Before beginning assembly, read the instructions and identify parts using the figures and parts listed in this document.

It is critical all parts be carefully inspected by the installer prior to installation to ensure no damage occurred in transit and a damaged part is not used. If any damage occurred in transit, Aqua Creek Products, LLC must be notified within three days of receipt of unit.

Proper installation cannot be overstressed, as an improper installation voids Aqua Creek's warranty and may affect the safety of the user.

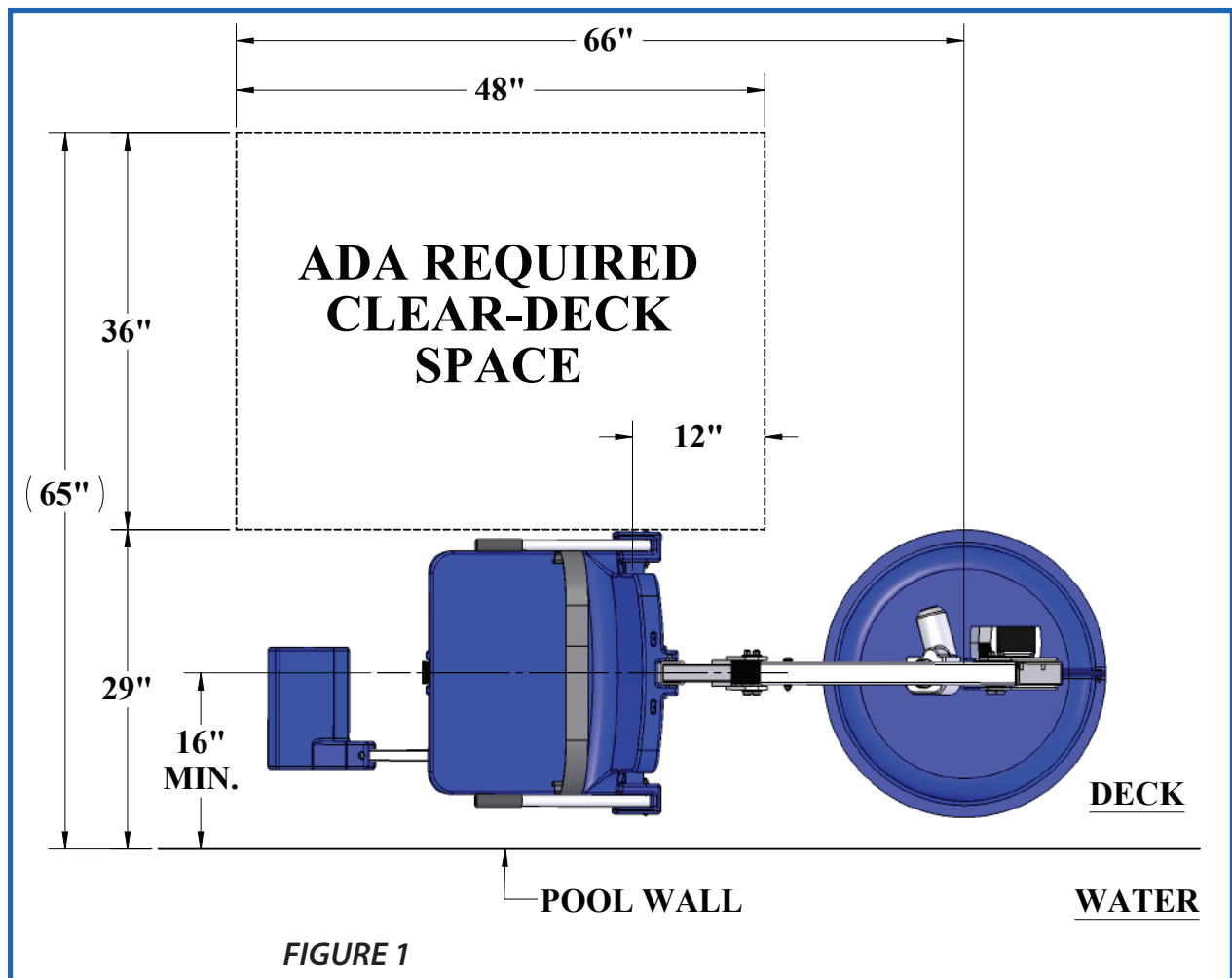
Installation: ADA Requirements

ADA REQUIREMENTS (For Commercial Applications):

The Revolution Lift is completely ADA Compliant when installed correctly. The installation must meet the following requirements:

- Clear deck space dimensions (see FIGURE 1)
- Lift installed a minimum of 24" from the pool edge
(For curved pool walls contact Aqua Creek for placement)
- Deck slope no greater than 1:48
- The seat must go at least 18" into the water. The lift should be installed at a location with 42"-48" of depth (deck to pool floor)

NOTE: Other requirements may be necessary based on local code requirements. The anchor system should be bonded according to NEC Section 680 and/or local code requirements.



Anchor Installation: New Construction or Retro-Fit by Saw-Cutting

You may need to saw cut and remove a portion of an existing pool deck in order to achieve the footing requirement of 11 inches deep. Thus, Aqua Creek does NOT recommend a core drill installation for this lift.

To properly install this anchor, you will need to have a concrete footing comprised of 2500psi concrete, is 11 inches deep and 4'-2" square, and reinforced with rebar. Refer to the diagrams below.

If cutting into an existing pool deck, the rebar must be drilled and secured to the surrounding pool deck on three sides (do not secure into bond beam). The centerline of your anchor should be no less than 9" from the edge of the footing.

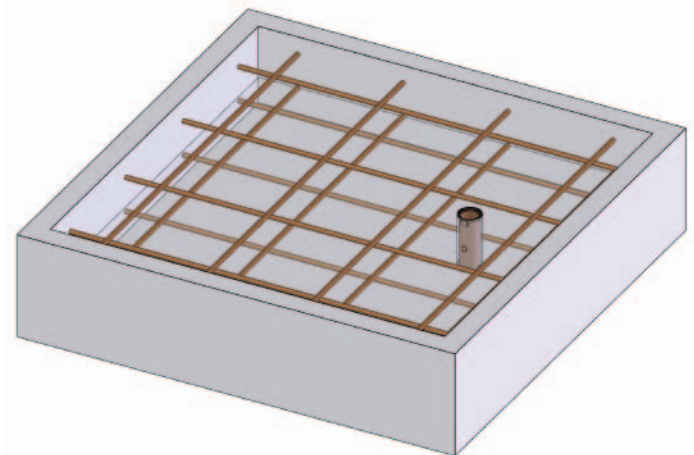
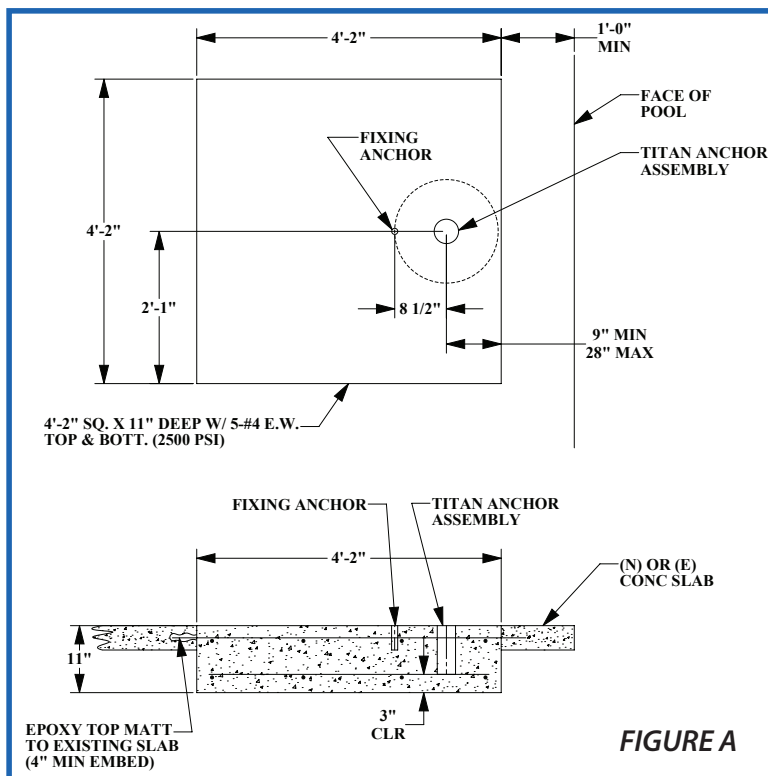
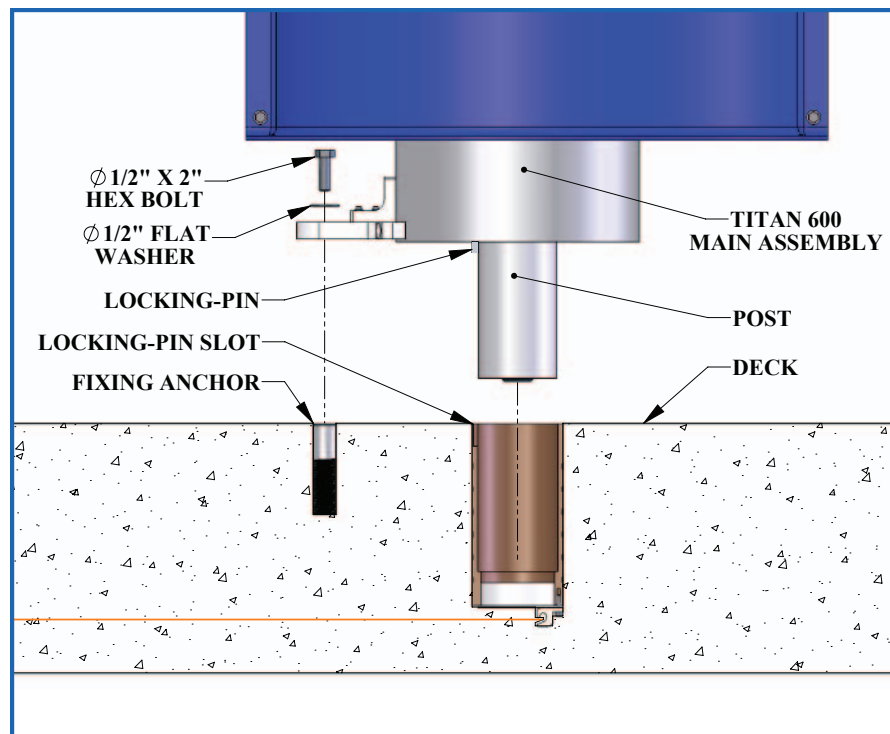


FIGURE B

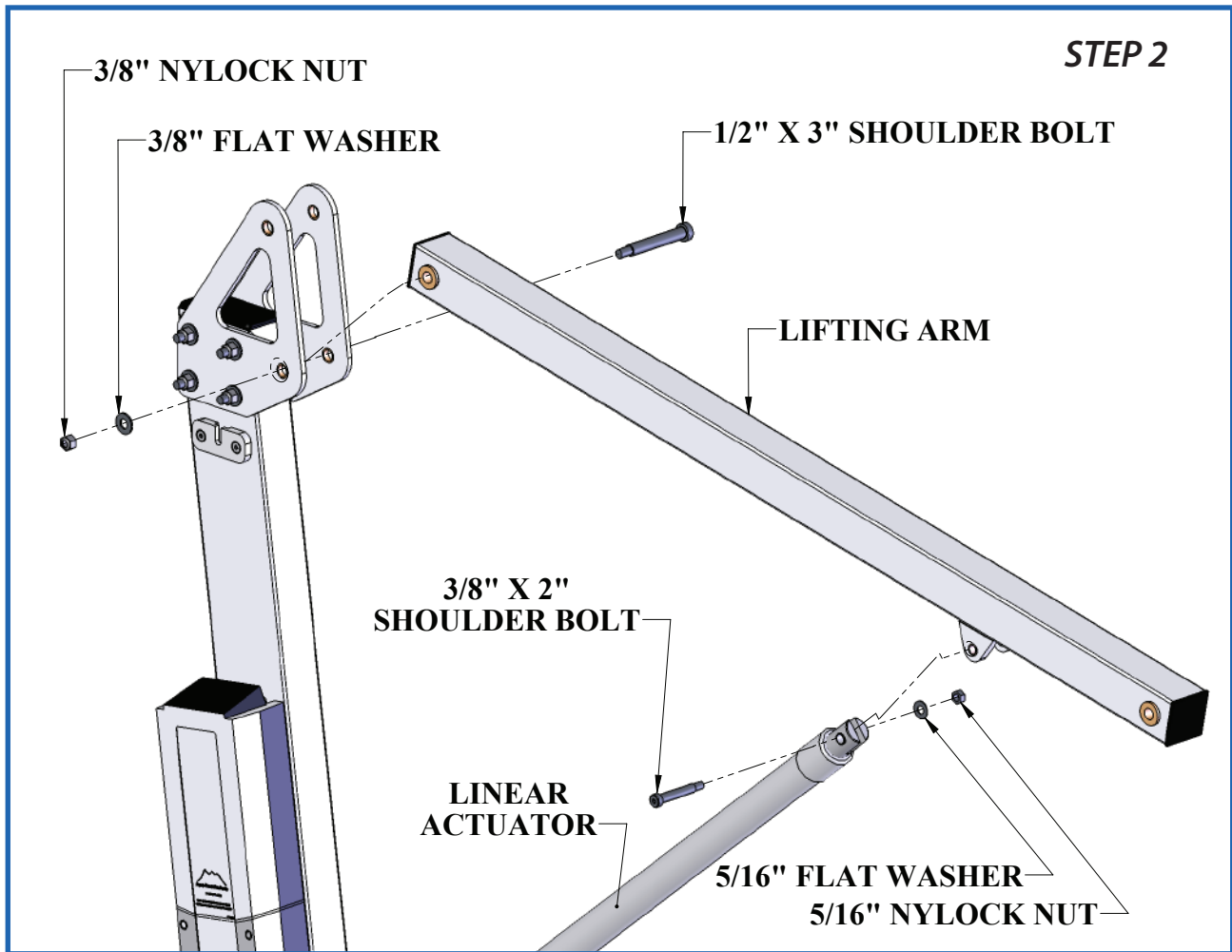
ADA Fixing Insert Installation (Commercial Applications)

1. Due to the indexed anchor and keyed base of the lift, we recommend installation of the fixing insert after the concrete has cured and you are ready to install the lift into the anchor.
2. Place the main assembly in the anchor and turn until the locking pin on the shaft of the lift lines up and drops into the locking pin slot in the anchor. **DO NOT LIFT THE MAIN ASSEMBLY BY USING THE ELECTRIC RAM AS A HANDLE. If the Transport cart was ordered with the lift, it can be used effectively here. If not, use two persons.**
3. Mark the location for the fixing anchor hole and remove the lift. (see pg 5, FIGURE A)
4. Drill the hole with a 1 1/4" core drill or roto-hammer to a depth of about 4 1/2".
5. Clean the hole out and make sure it is dry. Thread the 1/2" bolt into the top of the PVC fixing anchor and test fit to verify it can be mounted perpendicular.



6. Using a two part construction epoxy, fill the hole approximately half full and carefully insert the PVC fixing anchor into the hole, twisting as you push down to evenly spread the epoxy.
7. Allow the epoxy to cure before securing the lift.
8. Re-install the lift into the anchor and using the 1/2" bolt and washer, carefully thread into the installed anchor until snug. **TO PREVENT BREAKING THE FIXING BRACKET, DO NOT OVERTIGHTEN!**

Titan Assembly Instructions



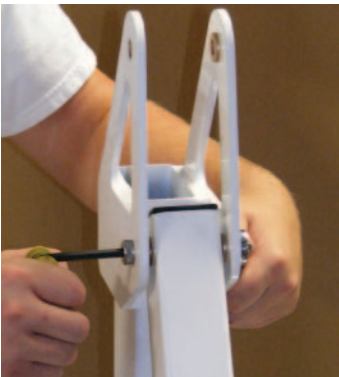
STEP 2: INSTALL LIFTING ARM

Locate the LIFTING ARM and the following hardware:

- (1) 1/2" x 3" SHOULDER BOLT
- (1) 3/8" x 2" SHOULDER BOLT
- (1) 5/16" FLAT WASHER
- (1) 5/16" NYLOCK NUT
- (1) 3/8" FLAT WASHER
- (1) 3/8" NYLOCK NUT

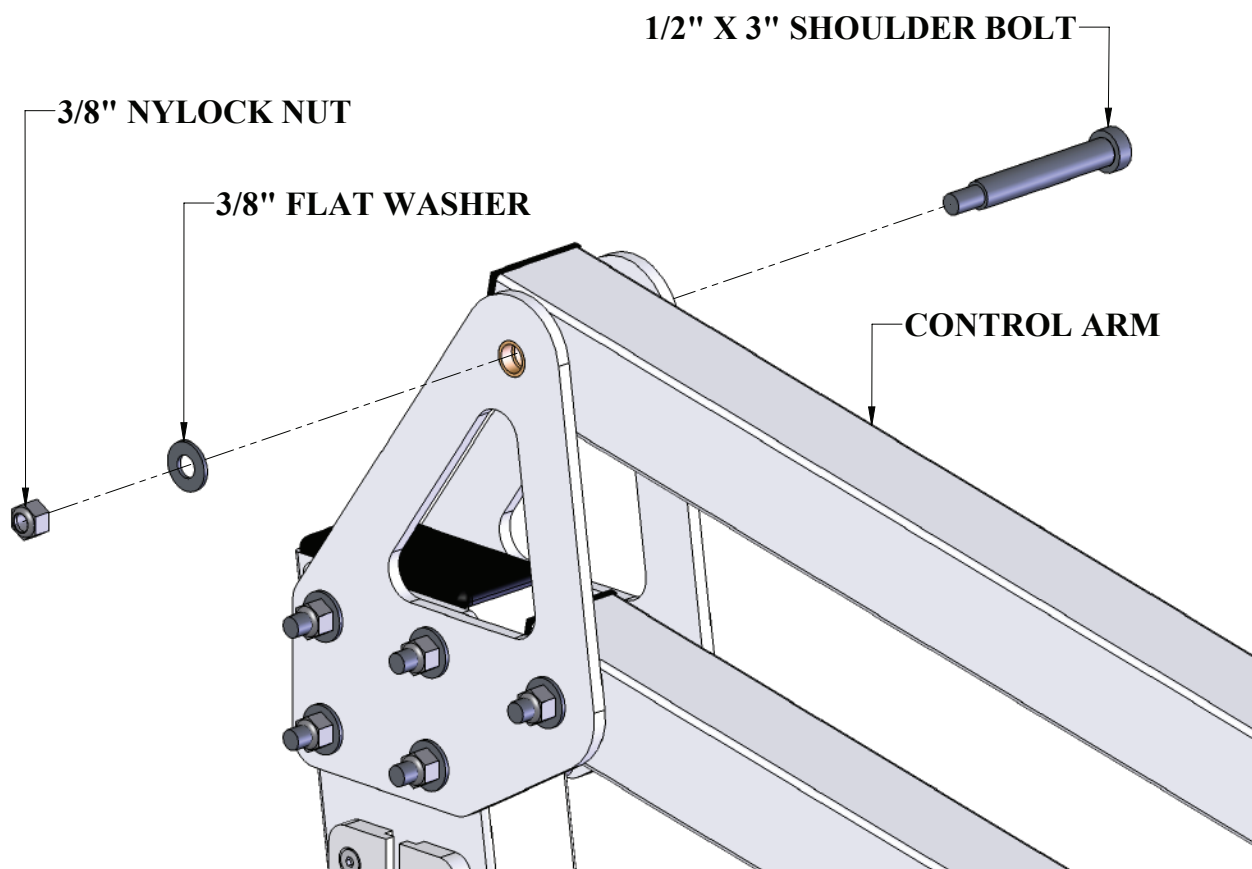
Remove the shipping strap and all packing from the LINEAR ACTUATOR. Connect the LIFTING ARM between the MAST and the LINEAR ACTUATOR as shown in the figure above. Make sure the end marked "B" attaches to the mast. Tighten NYLOCK NUTS (2) until snug as shown in STEP 2.

DO NOT OVER TIGHTEN!



Titan Assembly Instructions (cont.)

STEP 3



STEP 3: INSTALL CONTROL ARM

Locate the CONTROL ARM and the following hardware:

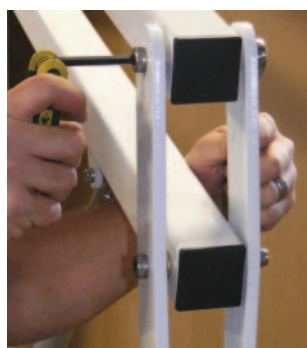
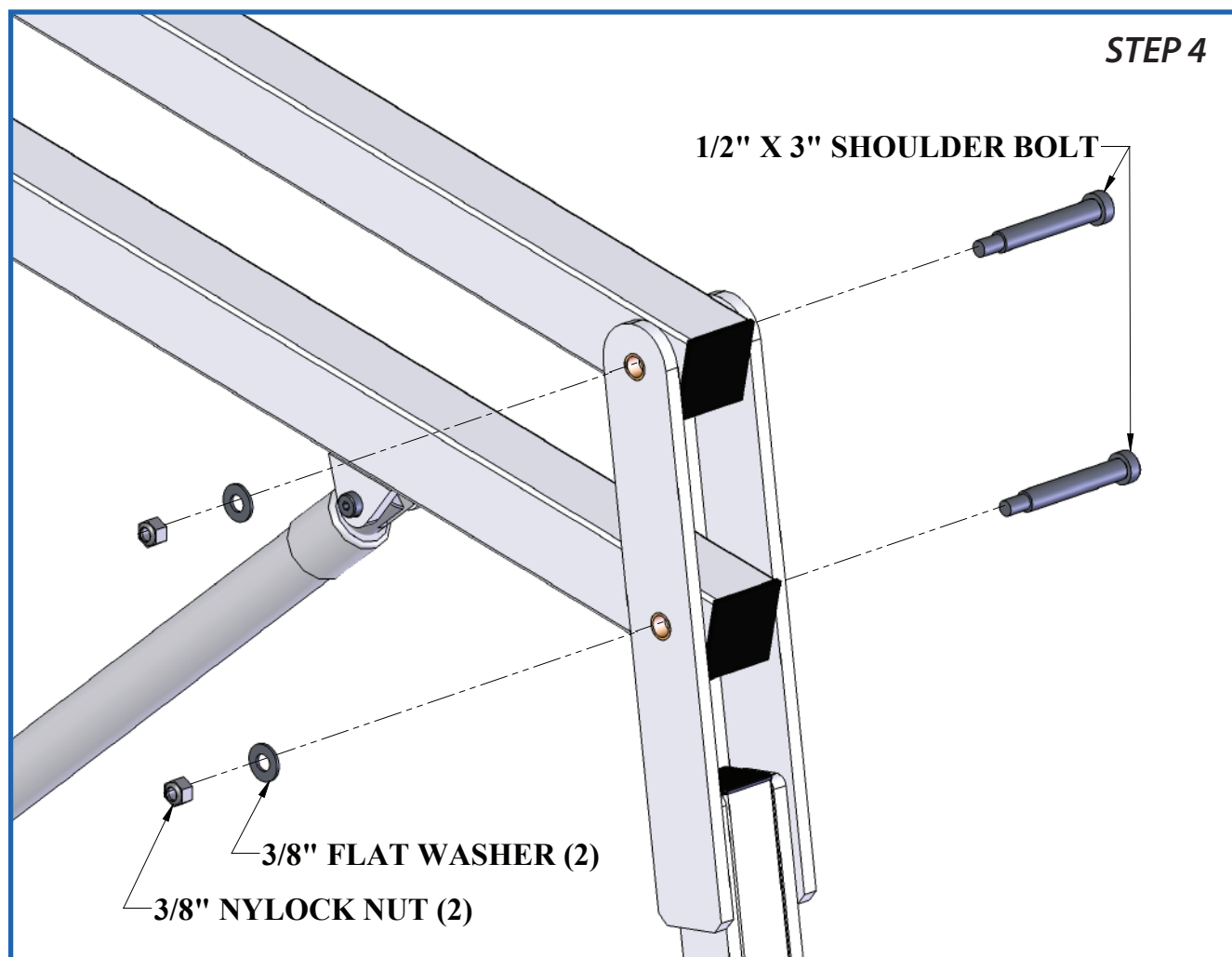
- (1) 1/2" x 3" SHOULDER BOLT
- (1) 3/8" FLAT WASHER
- (1) 3/8" NYLOCK NUT

Install the CONTROL ARM (end marked "A") onto the MAST as shown in the figure above. Tighten the NYLOCK NUT until snug as shown in STEP 3. **DO NOT OVER TIGHTEN!**



Titan Assembly Instructions (cont.)

STEP 4



STEP 4: INSTALL SEAT ARM

Locate the SEAT ARM and the following hardware:

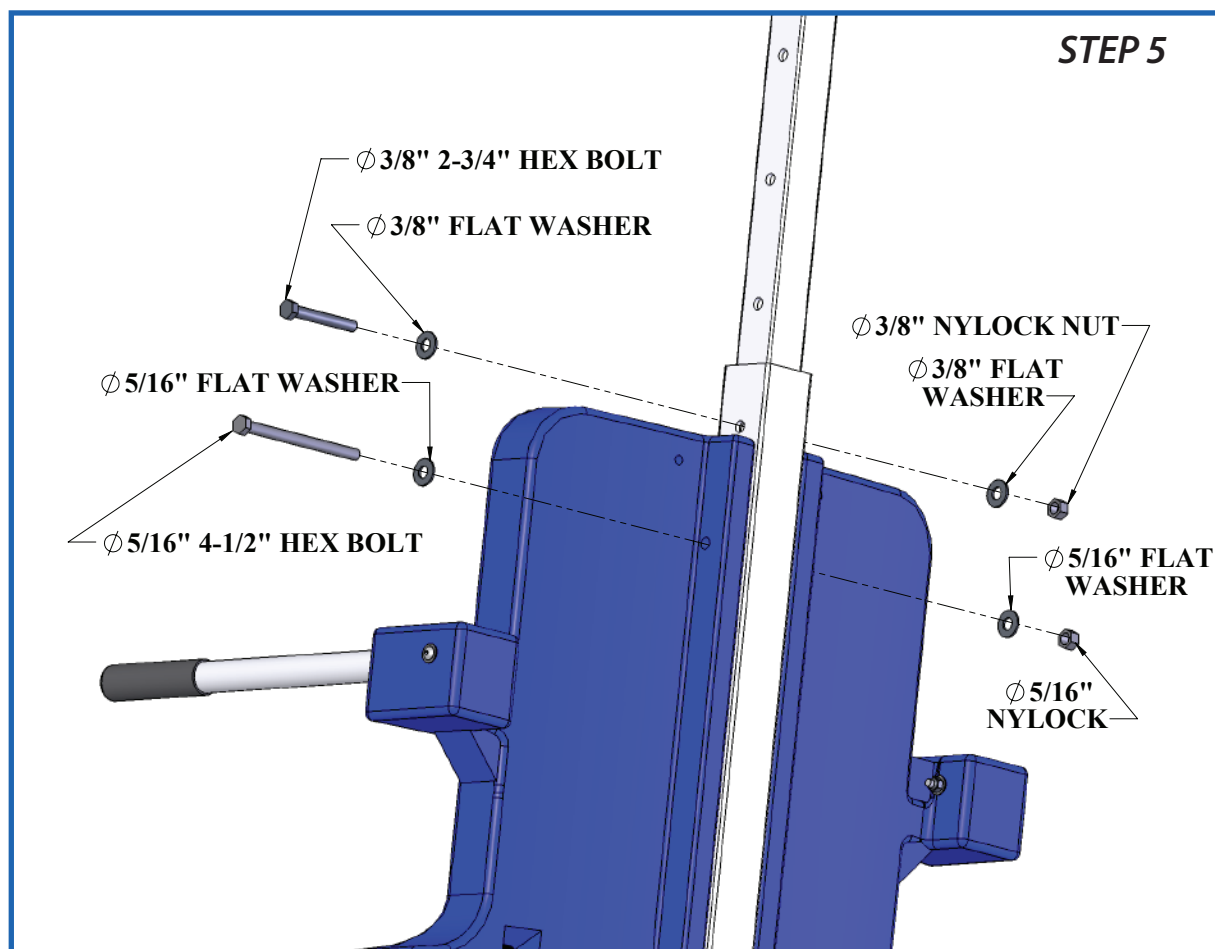
- (2) 1/2" x 3" SHOULDER BOLT
- (2) 3/8" FLAT WASHER
- (2) 3/8" NYLOCK NUT

Install the SEAT ARM at the ends of the CONTROL ARM and LIFTING ARM as shown in the figure above. Tighten the NYLOCK NUTS until snug as shown in STEP 4. **DO NOT OVER TIGHTEN!**

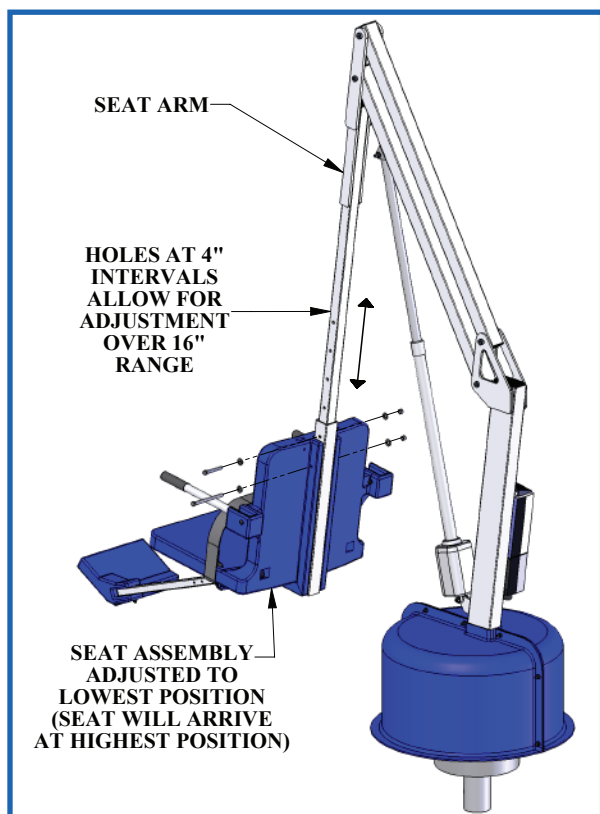
(NOTE: MAKE SURE THE SEAT IS FACING AWAY FROM THE MAIN ASSEMBLY)

NOTE: FOR APPLICATIONS THAT UTILIZE MULTIPLE SEAT ARMS (SUCH AS FOR A SLING SEAT OR THE SPA SEAT-ARM) USE THIS STEP TO REMOVE AND REPLACE THE SEAT ARM.

Titan Assembly Instructions (cont.)



STEP 5: ADJUST THE SEAT POSITION

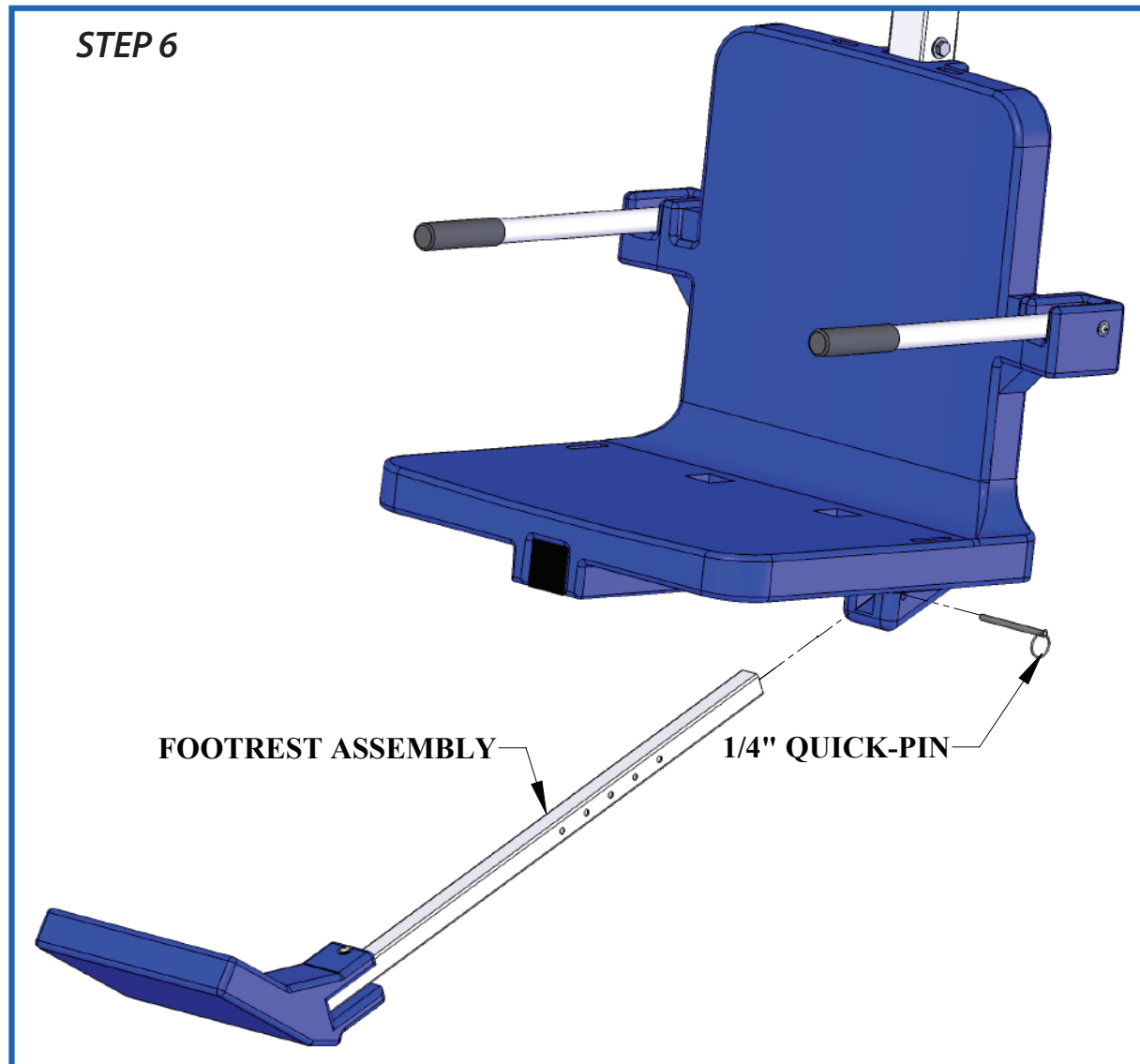


The SEAT ASSEMBLY will arrive attached to the SEAT ARM adjusted to its highest position. To adjust the SEAT ASSEMBLY to a lower position remove the hardware as shown above. Slide the SEAT ASSEMBLY to its desired position (in 4" increments) and reinstall the hardware. The maximum adjustment is 16" (down).

DO NOT ATTACH THE SEAT ASSEMBLY ANY LOWER THAN THIS – ALWAYS USE THE TWO (2) SUPPLIED BOLTS TO ATTACH THE SEAT ASSEMBLY TO THE CHAIR ARM!

NOTE: For most applications, such as pools with a flat deck, the seat will be installed in its lowest position. For applications where a wall or curb must be cleared the seat should be installed in a higher position. In its highest position the seat will clear a 30" [762mm] high wall.

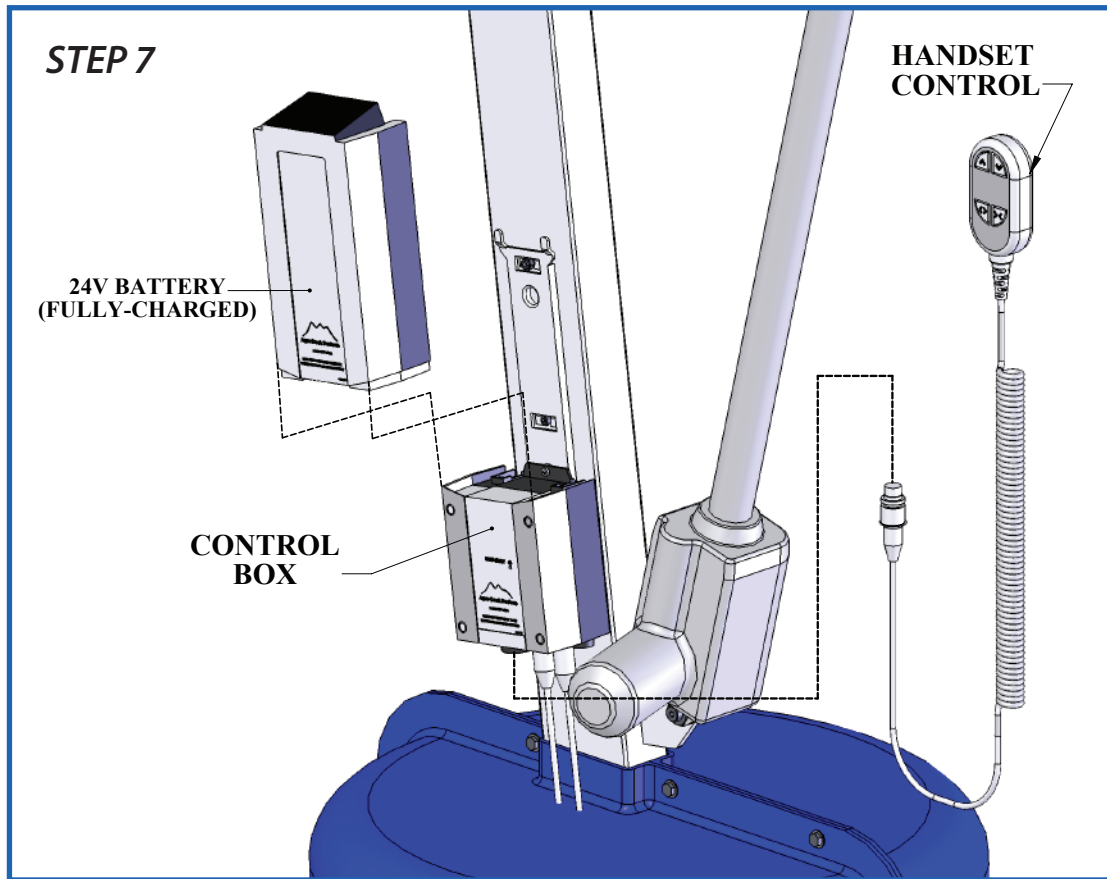
Titan Assembly Instructions (cont.)



STEP 6: INSTALL THE FOOTREST

Locate the FOOTREST ASSEMBLY and install it on the seat as shown above. The QUICK RELEASE PIN is attached to the SEAT ASSEMBLY with a lanyard (cable). Pull out the pin and slide the FOOTREST ASSEMBLY into the slot and line up one of the holes on the FOOTREST TUBE with the hole for the pin. Push the pin back into the hole and through the hole in the FOOTREST TUBE to hold the FOOTREST ASSEMBLY in the desired position. To re-adjust the FOOTREST simply pull out the pin and select a new hole on the FOOTREST TUBE.

Titan Assembly Instructions (cont.)



STEP 7: INSTALL 24V BATTERY & HANDSET

Locate the 24V battery, the battery charging unit and the handset control. **Charge the battery for 24 hours** then install it on the bracket above the control box as shown above. Plug the handset control into the control box as shown above and in the photos to the left. Press firmly to make sure the plug is fully seated as shown below.

THE LIFT WILL NOT FUNCTION IF THE HANDSET PLUG IS NOT FULLY SEATED OR IF THE BATTERY IS NOT PROPERLY ALIGNED.

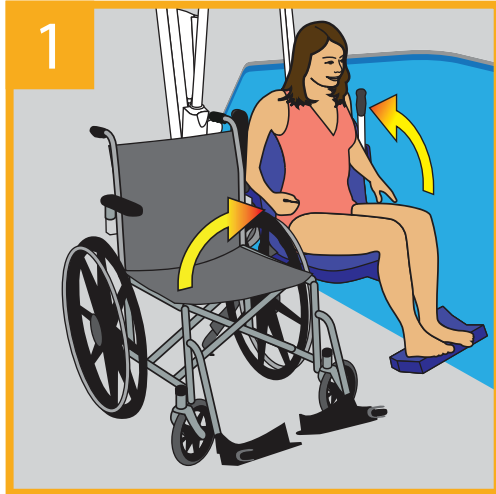


NOT SEATED



SEATED

Titan Operation Instructions



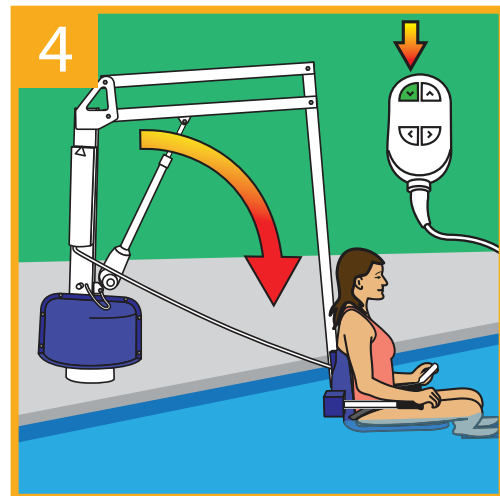
**Flip Up Armrests &
Transfer to Lift**



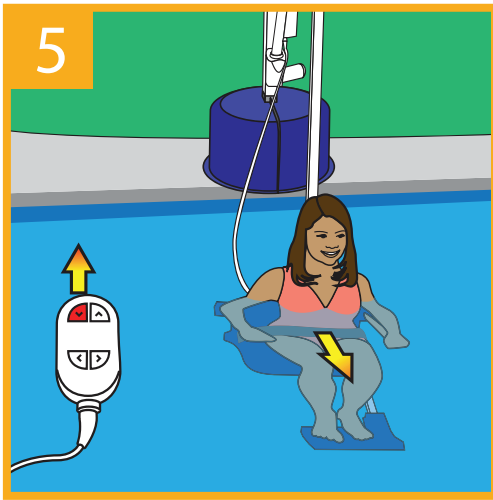
**Lower Armrests &
Secure Lapbelt**



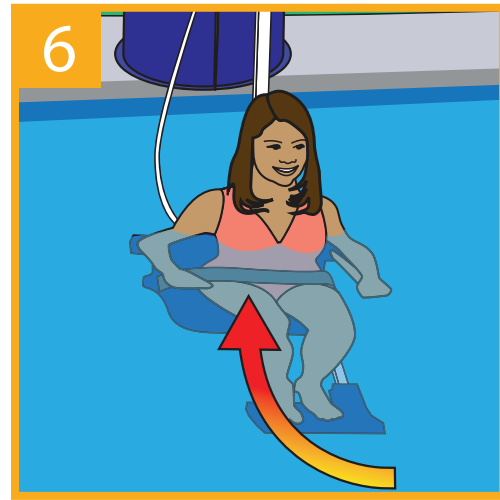
Rotate Lift Above Pool



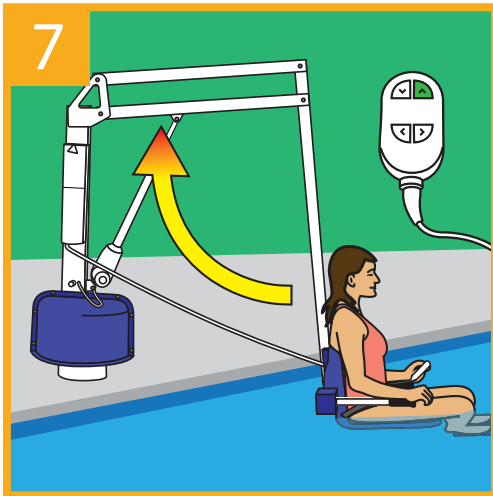
**Lower Lift by Applying
Pressure to the
Down Arrow**



**Release Pressure to Stop,
Then Release Lapbelt**



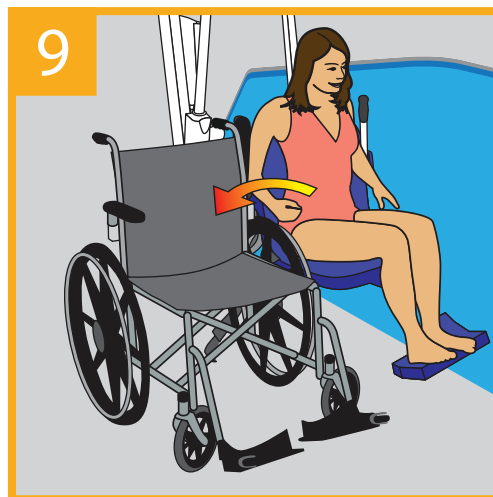
**Return to Submerged
Lift Seat & Secure Lapbelt**



**Raise Lift by Applying
Pressure to the Up Arrow**



Rotate Lift Away from Pool



**Release Lapbelt,
Raise Armrests,
& Exit Lift Seat**

Troubleshooting Guide

These are the most common issues. Visit our website for all troubleshooting solutions (Including videos).

Problem: The lift won't move when the handset button is pressed.

Solution:

1) Make sure the battery is properly seated:

You should hear a click when the battery is properly seated on the control box or charger.



NOT Properly Attached:
Note the white bracket is in front of the silver clip, which will not allow for an electrical connection



Properly Attached:
Note the white bracket is behind the silver clip, holding it securely to allow for an electrical connection

2) Make sure the cords are properly plugged in:



NOT Properly Inserted:
The cord plug is flush with or sticking out of the outlet

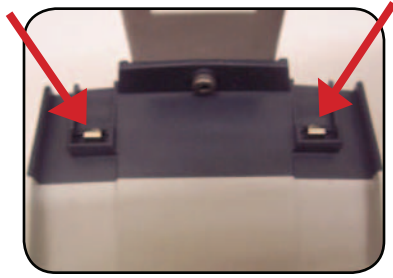


Properly Inserted:
The cord plug is recessed into the outlet

Check the ends of the cords for corrosion or damage. The cord plugs should be recessed into the outlet. You should feel them pop into place when they are correctly inserted.

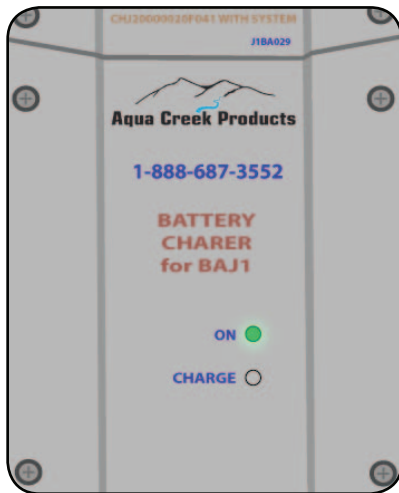
Troubleshooting Guide (CONTINUED)

3) Check the contact points:



Make sure the contact points of the control box and the battery are not damaged or corroded. If there is corrosion, clean with alcohol and cotton swab. Put some dielectric grease on the contact points before reattaching the battery.

4) Make sure the battery is fully charged:



The charger is ON when the green light is glowing



The battery is CHARGING when the orange light is glowing



When the battery is charged, the orange light will stop glowing

Problem: The lift stopped moving over the water and is stuck.

Solution:

1) Press the Emergency button:

Use a pen or pencil tip, stick it into the emergency button on the front of the control box to retract the lift.

Note: the lift will not retract if the battery is not fully charged or if the control box is not working. The emergency button only overrides the remote handset.



Battery Maintenance

- 1. RECHARGE THE BATTERY AS OFTEN AS POSSIBLE.** The battery power unit is a sealed lead acid battery pack. Frequent recharges will prolong the battery life and maintain a high cold amperage capacity. **WHEN LIFT IS NOT IN SERVICE, STORE BATTERY ON THE CHARGER.**
- 2. Do NOT** expose the battery to freezing temperatures.
- 3. Do NOT** expose the battery to prolonged periods of extreme heat or severe cold temperatures.
- 4. Do NOT** expose the battery to long periods of direct sunlight. Heat will shorten your battery life. Optimum operating temperature is below 20 degrees Celsius (68 degrees F.)
- 5. Never** drop or bump the battery pack. This may result in loose or damaged internal connections, and may damage the battery terminals.
- 6. Keep** battery terminals clean and free from dirt and corrosion to ensure good contact. The terminals may be cleaned using alcohol and a cotton swab. Clean off any corrosion or discoloration of the battery contacts with a Scotch Bright™ pad and then apply dielectric grease (supplied with lift) as shown in the figure below.



Clean with alcohol
and a cotton swab and
apply dielectric grease
to terminals

Proper Care of Pool & Spa Lifts

PROCEDURE	DAILY	WEEKLY	MONTHLY
Wash down lift with fresh water and dry with clean, soft, non-abrasive cloth.	✓		
Recharge battery.	✓		
Run the lift through a complete test cycle to verify it is functioning properly.	✓		
Visually inspect lift for damage, corrosion, and loose or missing hardware.	✓		
Check all contact points for damage and/or corrosion.		✓	
Repair, clean, and apply dielectric grease to all contact points.		✓	
Thoroughly clean lift frame and apply a liberal coat of car wax to maintain the lift's finish.			✓
Check all Warning and Cautionary labels to make sure they are not faded or worn. Replace as needed.			✓

PROPER CARE NOTES

- **Use only fresh water to wash your lift. Do not wash with pool water.**
- Use only clean, soft, non-abrasive cloths to wipe down your lift.
- Do not store lift in pump room or near chemicals.
- Do not allow children to play on or around this lift.
- When cleaning the lift, do not spray water directly on control box or battery.
- The lift may need to be bonded according to local code requirements.

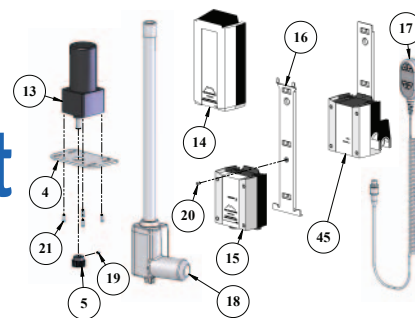
STAIN REMOVAL TIPS:

To remove stubborn stains from finish, spray affected area with Mild Dish Soap, rub briskly with a 3M Scotch Brite™ pad. Use white epoxy paint to touch up the finish. Apply wax to protect when dry.

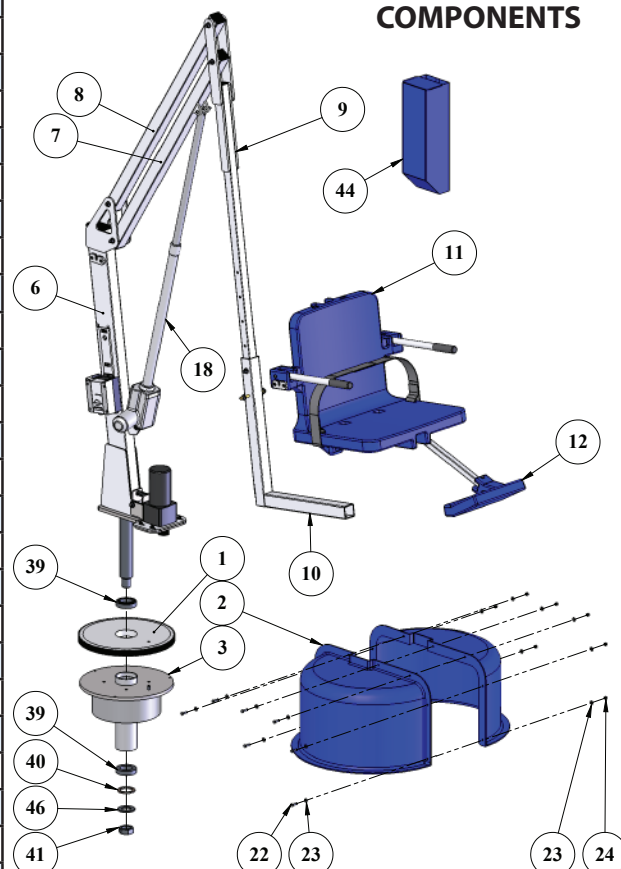
For service and/or replacement parts contact Aqua Creek direct at
Toll free: (888) 687-3552

ITEM #	QTY	PART #	DESCRIPTION
1	1	TTN-100-40	TITAN BASE GEAR
2	1	P-930	SHROUD, PLASTIC, REVOLUTION
3	1	TTN-200-80	TITAN BASE ASSEMBLY, 2ND ANCHOR
4	1	REV-310-50	MOTOR PLATE, REVOLUTION
5	1	REV-320-00	REVOLUTION GEAR
6	1	TTN-400-70	TITAN MAST ASSEMBLY
7	1	TTN-500-65	TITAN LIFTING ARM ASSEMBLY
8	1	TTN-600-60	TITAN CONTROL ARM ASSEMBLY
9	1	TTN-700-65	TITAN CHAIR ARM ASSEMBLY
10	1	REV-800-20	REVOLUTION SEAT CRADLE ASSEMBLY
11	1	SA-0904WDCAB	22" WIDE BLUE SEAT ASSEMBLY
12	1	F-0904FRA2	FOOTREST ASSY, STANDARD, ANGLED, BLUE
13	1	6155/REV/TITAN	MOTOR, GROSCHOPP
14	1	BAJ1-U022-00	BATTERY, LINAK, 24 VOLT
15	1	CBJ2-U023-00	CONTROL BOX, LINAK, 2-PORT
16	1	MBJ2-01	BRACKET, MOUNTING, T SHAPED
17	1	HB00-U010-00	REMOTE, LINAK, 4 BUTTON
18	1	340643-00	ACTUATOR, LINAK, 600MM
19	1	SSE 1/4 X 1/4	SCREW, 316 SS, 1/4-20 X 1/4 SET SCREW
20	3	BSH 10 X 1/2	BOLT, 316 SS, 10-24 X 1/2", SHCS
21	4	BC 1/4 X 1	BOLT, 316 SS, 1/4-20 X 1 FHSCS
22	7	BH 1/4 X 3/4	BOLT, 316 SS, 1/4-20 X 3/4 HCS
23	18	WF 1/4	WASHER, FLAT, 1/4, 316 SS
24	11	NN 1/4	NUT, 316 SS, NYLOCK, 1/4"-20
25	1	BH 5/16 X 4-1/2	BOLT, 316 SS, 5/16-18 X 4 1/2 HCS
26	4	WF 5/16	WASHER, FLAT, 5/16, 316 SS
27	3	NN 5/16	NUT, 316 SS, NYLOCK, 5/16"-18
28	1	BS 3/8 X 1-1/4 18-8	BOLT, 18-8 SS, 3/8 X 1 1/4 SHOULDER
29	1	BS 3/8 X 2 18-8	BOLT, 18-8 SS, 3/8 X 2 SHOULDER
30	1	BH 3/8 X 2-3/4	BOLT, 316 SS, 3/8-16 X 2 3/4 HCS
31	4	BH 3/8 X 3-1/2	BOLT, 316 SS, 3/8-16 X 3 1/2 HCS
32	14	WF 3/8	WASHER, FLAT, 3/8, 316 SS
33	9	NN 3/8	NUT, 316 SS, NYLOCK, 3/8"-16
34	4	BS 1/2 X 3 18-8	BOLT, 18-8 SS, 1/2 X 3 SHOULDER
35	1	BRB SS-1216-4	BUSHING, BRONZE SLEEVE, 3/8 X 1/2 X 1/4
36	2	BRB SS-1216-6	BUSHING, BRONZE SLEEVE, 1/2 X 3/8 X 3/8
37	8	BRB SS-1620-6	BUSHING, BRONZE SLEEVE, 1/2 X 5/8 X 3/8
38	8	BRB FB-810-5	BUSHING, BRONZE FLANGE, 1/2 X 5/8 X 5/8 X 3/32
39	2	LM104911/LM104949	TITAN ROLLER BEARING & RACE
40	1	TTN-STW-00	TITAN SHAFT THRUST WASHER
41	1	NN 1-3/8	NUT, 316 SS, NYLOCK, 1 3/8"-6 THREAD
42	4	SQR-2-10-14	CAP, PLASTIC, 2" X 2" SQUARE
43	1	SQR-1-1/2-10-14	CAP, PLASTIC, 1.5" SQUARE
44	1	F-BCC10-C	COVER, BATTERY/CONTROL BOX
45	1	CH20000020F041	CHARGER, LINAK, 24V
46	1	TNSZCW-00	CUSTOM FLAT WASHER

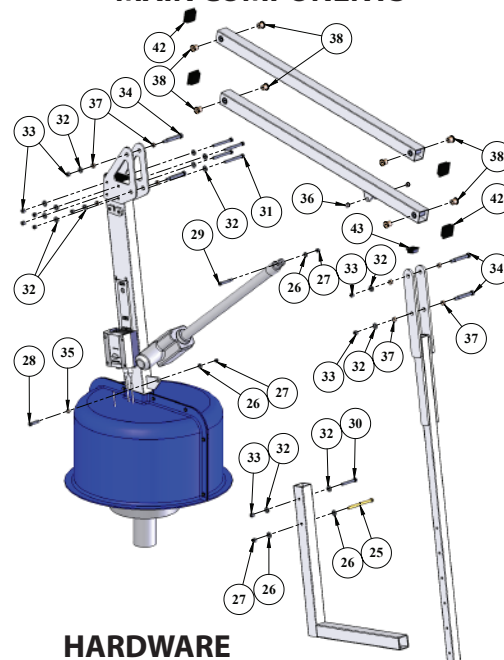
Titan Parts List



ELECTRIC COMPONENTS

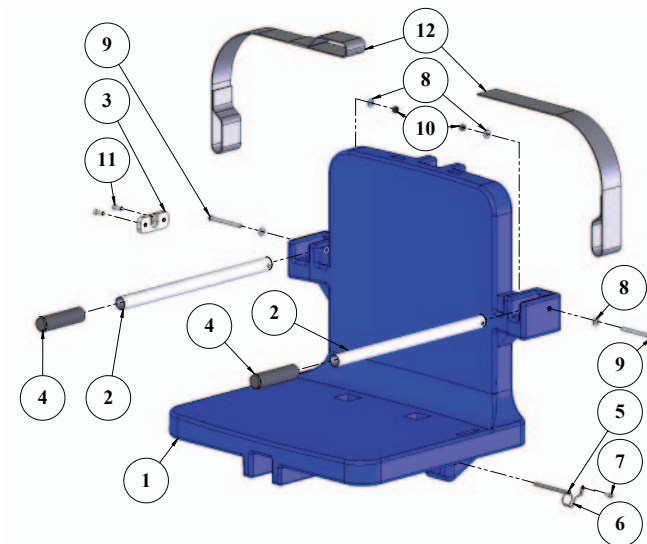


MAIN COMPONENTS

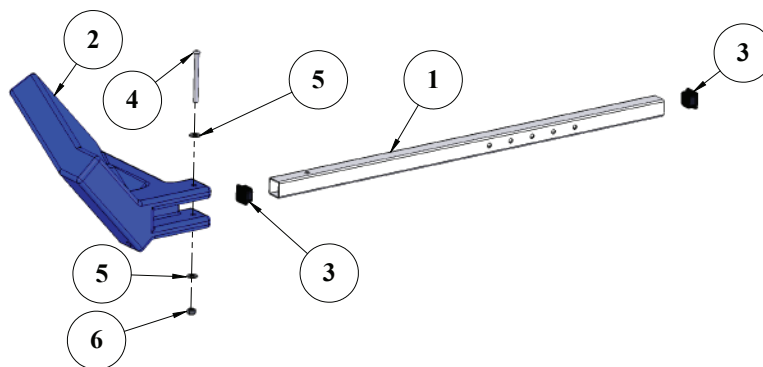


HARDWARE

Chair & Footrest Parts List



ITEM #	QTY	PART #	DESCRIPTION
1	1	P-905B	CHAIR, PLASTIC, 22", BLUE
2	2	P-2100FLA-38	CHAIR II ARMREST TUBE
3	1	P-1208HSB	BRACKET, PLASTIC, HANDSET BRACKET
4	2	RUBBER HAND GRIPS	GRIP, RUBBER HAND GRIP
5	1	COTTER PIN, 1/4 X 3 1/4	PIN, COTTERLESS PIN, 18-8 SS, 1/4 X 3 3/4
6	4	LANYARD	LANYARD, FOR FOOTREST PIN, SS
7	1	SPH 10 X 3/4	SCREW, 316 SS, #10 X 3/4", PHSMS
8	4	WF 1/4	WASHER, FLAT, 1/4, 316 SS
9	2	BB 1/4 X 3-1/4	BOLT, 316 SS, 1/4-20 X 3 1/4 BHSCS
10	2	NN 1/4	NUT, 316 SS, NYLOCK, 1/4"-20
11	2	SFL 12 X 3/4	SCREW, 316 SS, #12 X 3/4 FHSMS
12	1	F-38SB	SEAT BELT, 2" BLACK W/VELCRO



ITEM #	QTY	PART #	DESCRIPTION
1	1	P-2035LEG REVB	LEG/FOOTREST TUBE
2	1	P-910PL	FOOTREST, PLASTIC, BLUE
3	2	SQR-1-14-20	CAP, PLASTIC, 1"X1" SQUARE
4	1	BB 1/4 X 3	BOLT, 316 SS, 1/4-20 X 3 BHSCS
5	2	WF 1/4	WASHER, FLAT, 1/4, 316 SS
6	1	NN 1/4	NUT, 316 SS, NYLOCK, 1/4"-20

**AQUA CREEK PRODUCTS, LLC LIMITED FIVE (5) YEAR WARRANTY:
TITAN POOL LIFT
(ITEM #'s F-600TL, F-600TLNA)**

Aqua Creek Products, LLC (a.k.a. Aqua Creek) also warrants to the original end user purchaser that products manufactured by Aqua Creek, when properly installed in accordance with assembly and installation instructions, and properly used and maintained, shall be free from defects in material and workmanship for a period of five (5) years from the date of original purchase, provided that Aqua Creek receives prompt notice in writing of any defect or failure and satisfactory proof thereof, with the following exception(s):

Exceptions:

All electrical components, including the linear actuator shall have the following warranty period:

o Year 1-2: 100% Coverage

o Year 3: 60% Coverage (Customer is responsible for 40% of replacement cost)

o Year 4: 50% Coverage (Customer is responsible for 50% of replacement cost)

o Year 5: 40% Coverage (Customer is responsible for 60% of replacement cost)

Hydraulic actuators and mesh slings shall have a warranty period of one (1) year from the date of original purchase.

Powder coat finish scratches, scrapes, corrosion, or dents from customers normal use, negligence, or abuse

This warranty specifically excludes reimbursement for labor to remove, repair, or install the product and any return freight charges. These warranties do not cover any damages due to accident, misuse, abuse, negligence or failure to properly maintain any products, or normal wear and tear from day to day operations. In the event that any products are altered, repaired, or improperly installed or improperly used by anyone without the prior written approval by Aqua Creek, all warranties are void. **IMPORTANT: AMOUNT OF WEIGHT PLACED ON LIFT SHALL NOT EXCEED THE RATED LIFTING CAPACITY FOR THE LIFT. NEVER OPERATE THE LIFT UNDER LOAD IN A DRY POOL (WITH NO WATER IN THE POOL).** It is the responsibility of the lift owner to verify the weight of the patron for warranty claim purposes and to ensure that the lift is not overloaded. Non-payment for product to Aqua Creek may void warranty.

To initiate a warranty claim, the owner of an Aqua Creek product must provide the place of purchase, in writing, with a full description of the product, its serial number, the dates of purchase and installation, and the exact nature of the defect. Within thirty (30) days after receipt of a written warranty claim by Aqua Creek, and barring any unforeseen delays, the place of purchase will be notified of Aqua Creek's decision regarding the claim.

If requested by Aqua Creek, any defective product must be returned, freight prepaid, to Aqua Creek's designated factory location or duly appointed distributor for inspection and/or repair. Aqua Creek will, at its option, repair or replace the failed or defective item, and deliver the repaired product or replacement to the buyer of the product, freight prepaid to the destination provided for in the original order. Products returned to Aqua Creek for which Aqua Creek provides replacement under this limited warranty shall become the property of Aqua Creek. A new warranty period shall NOT be established for the repaired or replaced products. Such products shall remain under warranty only for the remainder of the original warranty period on the original products purchased.

This written limited warranty constitutes the final, complete and exclusive statement of warranty terms. No person or organization is authorized to make any other specific or implied warranties or representations on behalf of Aqua Creek.

THE WARRANTIES SET FORTH HEREIN ARE IN LIEU OF ALL OTHER WARRANTIES, EXPRESSED OR IMPLIED, WHICH ARE HEREBY DISCLAIMED AND EXCLUDED, INCLUDING WITHOUT LIMITATION ANY WARRANTY OF MERCHANTABILITY OR FITNESS FOR A PARTICULAR PURPOSE OR USE.

THE SOLE AND EXCLUSIVE REMEDIES FOR BREACH OF ANY AND ALL WARRANTIES WITH RESPECT TO THE PRODUCTS SHALL BE LIMITED TO REPAIR OR REPLACEMENT AT AQUA CREEK'S DESIGNATED FACTORY LOCATION, OR DULY APPOINTED DISTRIBUTOR, OR IN PLACE AT AQUA CREEK'S OPTION. IN NO EVENT SHALL AQUA CREEK'S LIABILITY EXCEED THE ENTIRE AMOUNT PAID TO AQUA CREEK BY THE ORIGINAL PURCHASER FOR THE FAILED OR DEFECTIVE PRODUCT. IN NO EVENT SHALL AQUA CREEK PRODUCTS, LLC BE LIABLE FOR ANY INCIDENTAL, CONSEQUENTIAL, SPECIAL, INDIRECT, PUNITIVE OR EXEMPLARY DAMAGES OR LOST PROFITS FROM ANY BREACH OF THIS LIMITED WARRANTY OR OTHERWISE.

THIS WARRANTY GIVES YOU SPECIFIC LEGAL RIGHTS AND YOU MAY ALSO HAVE OTHER RIGHTS, WHICH MAY VARY FROM STATE TO STATE. SOME STATES DO NOT ALLOW THE EXCLUSION OR LIMITATION OF INCIDENTAL, SPECIAL OR CONSEQUENTIAL DAMAGES, SO SOME OF THE ABOVE LIMITATIONS OR EXCLUSIONS MAY NOT APPLY TO YOU.

Aqua Creek Products, LLC
9889 Garrymore Lane
Missoula, MT 59808
Toll Free: (888) 687-3552
Local/Intnl: (406) 549-0769
www.aquacreek.com



Aqua Creek Products

The Total Solution for Pool and Spa Access



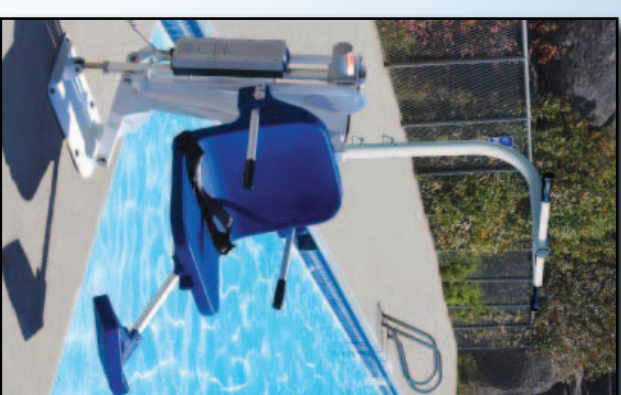
F-019CA

Cycle Attachment



F-706RLSS

Sling Seat Assembly



Ranger
with overhead therapy bar



F-705-S2

Wheelchair Attachment

ACCESSORIES & OPTIONS

F-019CA

Cycle Attachment

F-105LAR

Pull-Out Legrest

F-422PLH

Headrest (Old Pro Pool)

F-422PLH-2

Headrest (All other lifts)

F-422XR

Headrest (Pro Pool-XR)

F-423CS

Chest Strap

F-414OHB

Overhead Therapy Bar

F-705-S2

Wheelchair*

F-734RSA

Spineboard*

F-736HS

Head Immobilizer For Spineboard*

F-730RSA-S2

Gurney*

F-706RLSS

Sling Seat Assembly*

***For Revolution & Titan Only**



Ranger with headrest and pull-out leg rest options

ACCESSORIES





Aqua Creek Products

The Total Solution for Pool and Spa Access

COVERS

F-442BL-C
F-12BL-C

Ranger/Pro Pool
Pro Pool XR/Pathfinder/Patriot/
Portable Pro Pool

F-450BL-C

Scout

F-720BL-C

Revolution/Titan

F-EZBL-C

EZ/Power EZ

F-440HBC-B

Super Power EZ

F-440EZHS-C

EZ/Power EZ

(cover w/hardseat option)

F-445SLC-B

Spa/Pro Spa 40 Series

F-462PS6C

Pro Spa 60 Series

TRANSPORT CARTS

F-428HT

Ranger/Pro Pool/Pathfinder

F-914STC

Pro Pool XR

F-814SCTC

Scout

F-714RTC

Revolution

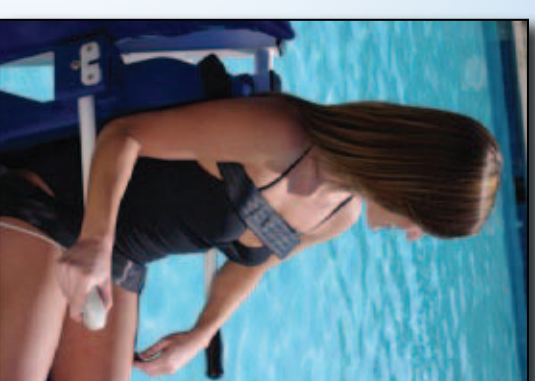
F-614TTC

Titan



F-428HT

Transport Cart



F-423CS

Chest Strap

UPGRADE PACKS

F-004PLBAP

Ranger/Pro Pool + Transport Cart

F-900PLAP

Pathfinder + Transport Cart

F-920SAP

Pro Pool XR + Transport Cart

F-800SCAP

Scout

F-700RLAP

Revolution/Titan

F-12PPAP

Patriot/Portable Pro Pool

F-03EZPLAP

EZ (sling bars, rigid seat sling w/ seat belt, cover)

F-03PEZAP

Power EZ (sling bars, rigid seat sling w/ seat belt, cover, extra battery)

F-190PHBLAP

Super Power EZ (sling bars, rigid seat sling w/seat belt, cover, extra battery)



**Chest strap & transport cart pictured to the right.*

F-004PLBAP

Upgrade Pack

UPGRADE PACKS INCLUDE**

Lift Cover
Extra Battery
Headrest
Chest Strap

****For lifts EXCEPT the EZ series. See table for EZ series upgrade pack specifics.**

ACCESSORIES

